

Designating and Rearranging the Areas of Evacuation

Cabinet Office, Japan
Support Team for Residents Affected by
Nuclear Incidents
July 23, 2012

Agenda

1. Initial Response

- Evacuation immediately after the accident on March 11, 2011
- Establishment of Support Team for Residents Affected by Nuclear Incidents

2. Additional measures

- Designation of restricted areas
- Designation of deliberate evacuation areas
- Designation of Evacuation prepared areas in case of emergency

3. Rearrangement

- Lift of evacuation prepared areas in case of emergency
- Rearrangement of the restricted areas and areas to which evacuation orders have been issued

4. Recovery and Reconstruction

Evacuation immediately after the accident on March 11, 2011

- Immediately after the accident, the government issued evacuation and sheltering (in-house evacuation) orders in response to the situation of the NPS.
- The areas of evacuation were gradually expanded according to the deepening seriousness of the accident.
- The government designated;
 - the areas of evacuation within 20km radius from NPS on March 12, 2011
 - the areas of in-house evacuation between 20-30km radius from NPS on March 15, 2011



Support Team for Residents Affected by Nuclear Incidents

- Established under the Nuclear Emergency Response Headquarters on March 29, 2011.
- To address the urgent issues of residents' daily life.
- Main missions (at that time)
 1. Designating and rearranging the areas of evacuation including the practical operation
 2. Conducting Fukushima health management survey
 3. Conducting and consulting radiation monitoring in the concerned areas
 4. Conducting disposal of disaster waste and decontamination

Nuclear Emergency Response Headquarters (Cabinet Office)

Director-General : Prime Minister

Vice Director-General : Minister of METI

Secretary-General : Minister in Charge of NPP

Members: Ministers

Support Team for Residents Affected by Nuclear Incidents

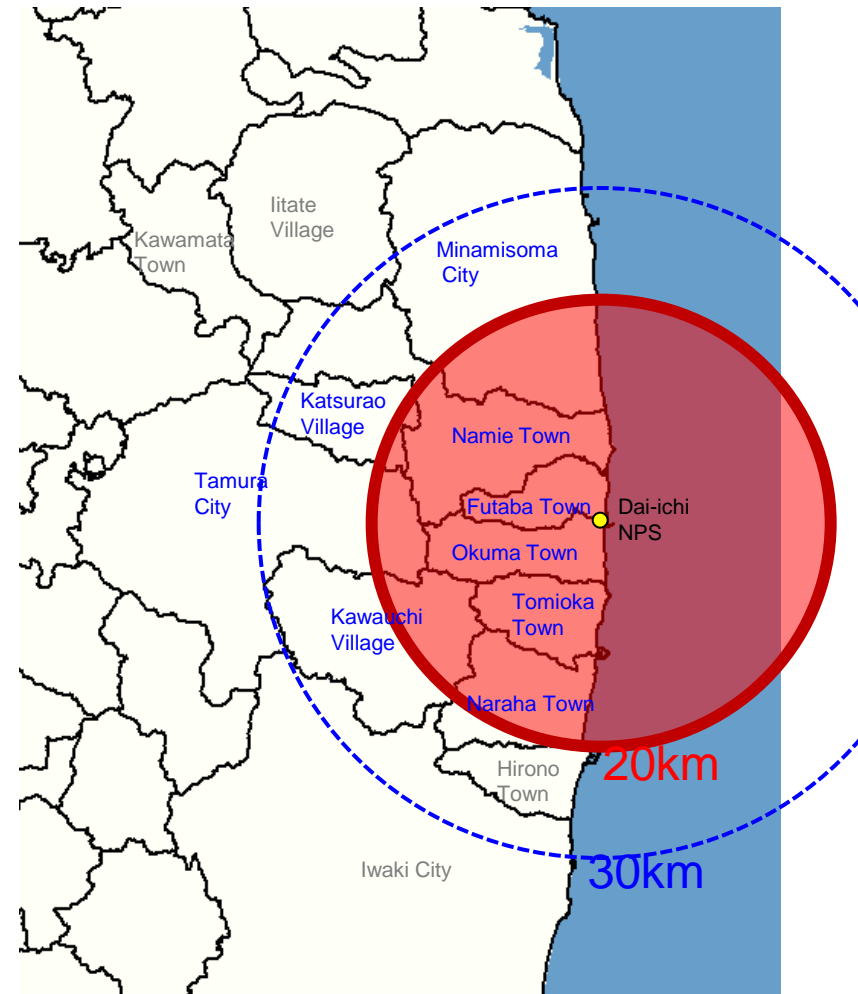
Team Leader :

Minister of METI

Minister in Charge of NPP

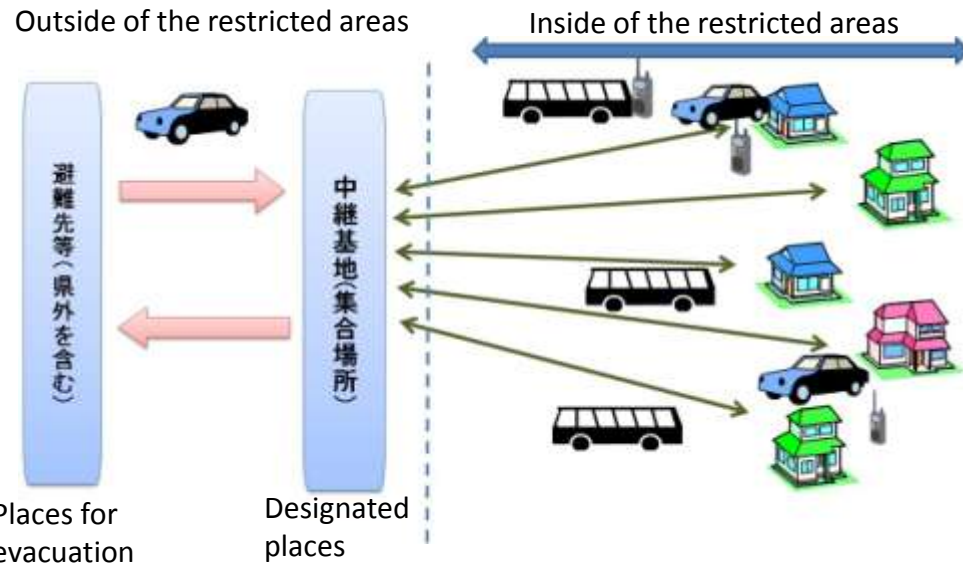
Restricted areas

- Designated as the areas within a 20km radius from the NPS on April 22, 2011, to prevent exposing residents to risks due to the NPS .
- About 76,000 people in 9 municipalities.
- Entry to the areas is prohibited with legal penalties, excluding those engaged in emergency response measures and the cases approved by the heads of municipal governments.
- Checkpoints and physical barricades were placed at the boundaries of the areas.



Temporary access to restricted areas

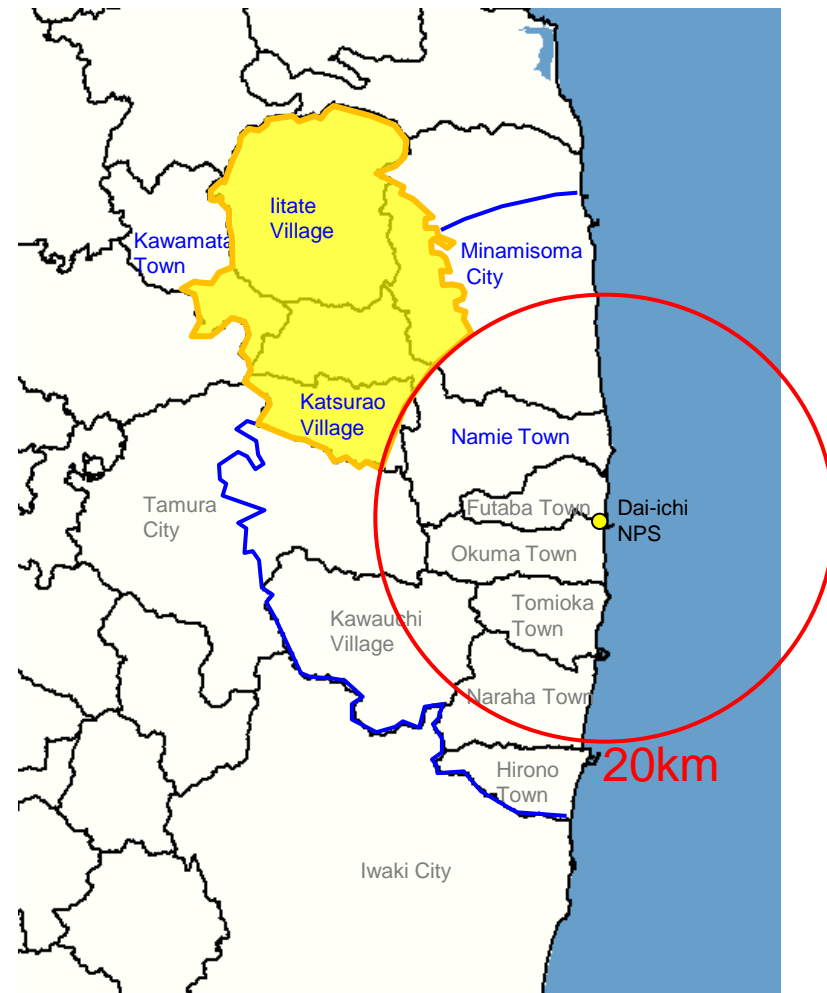
- Started temporary access to residents' houses and business places in the areas on May 10, 2011.
- Dosimeter and radiation screening was required when entering and exiting the restricted areas.



	Term	# of households	# of people
Round 1	2011.5.10～ 2011.9.9	19,926	33,598
Round 2	2011.9.19～ 2011.12.24	21,284	49,771
Round 3	2012.1.29～ 2012.4.22	18,491	44,717
Round 4	2012.5.11～ 2012.7.15	13,669	33,916

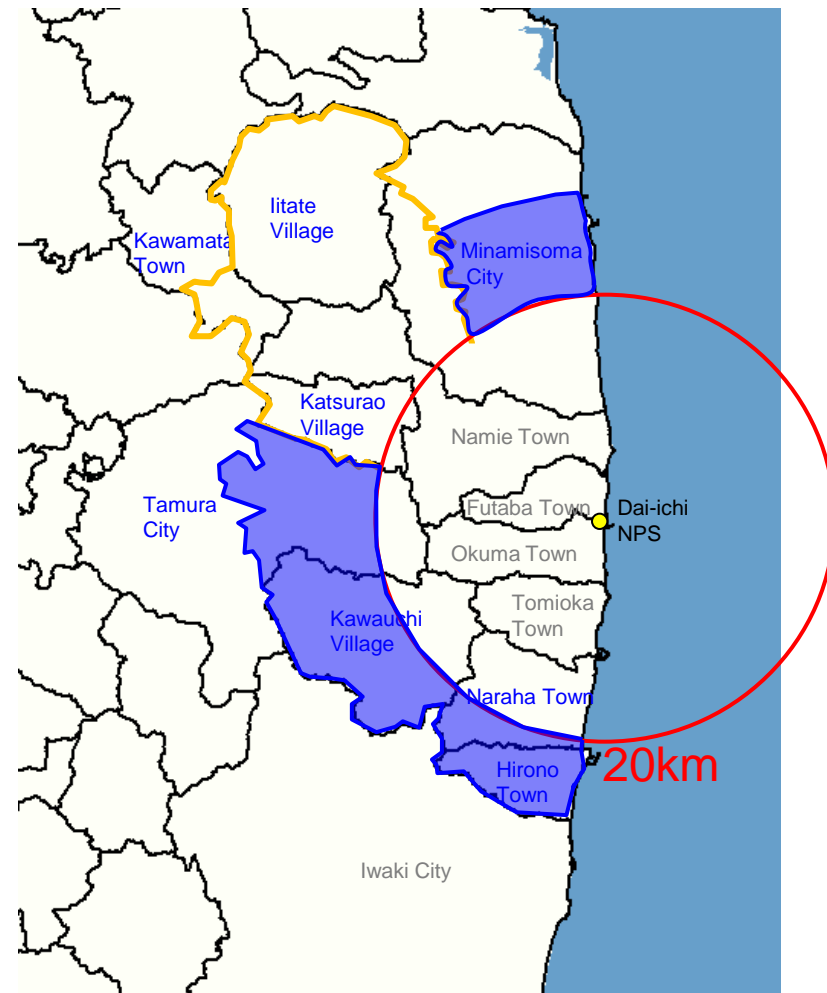
Deliberate evacuation areas

- Designated as the areas excluding restricted areas, where annual cumulative dose of radiation was expected to reach 20 mSv after the accident, on April 22, 2011.
- About 10,000 people in 5 municipalities.
- Required to evacuate within about a month to reduce the risk of residents being exposed to radioactive materials.



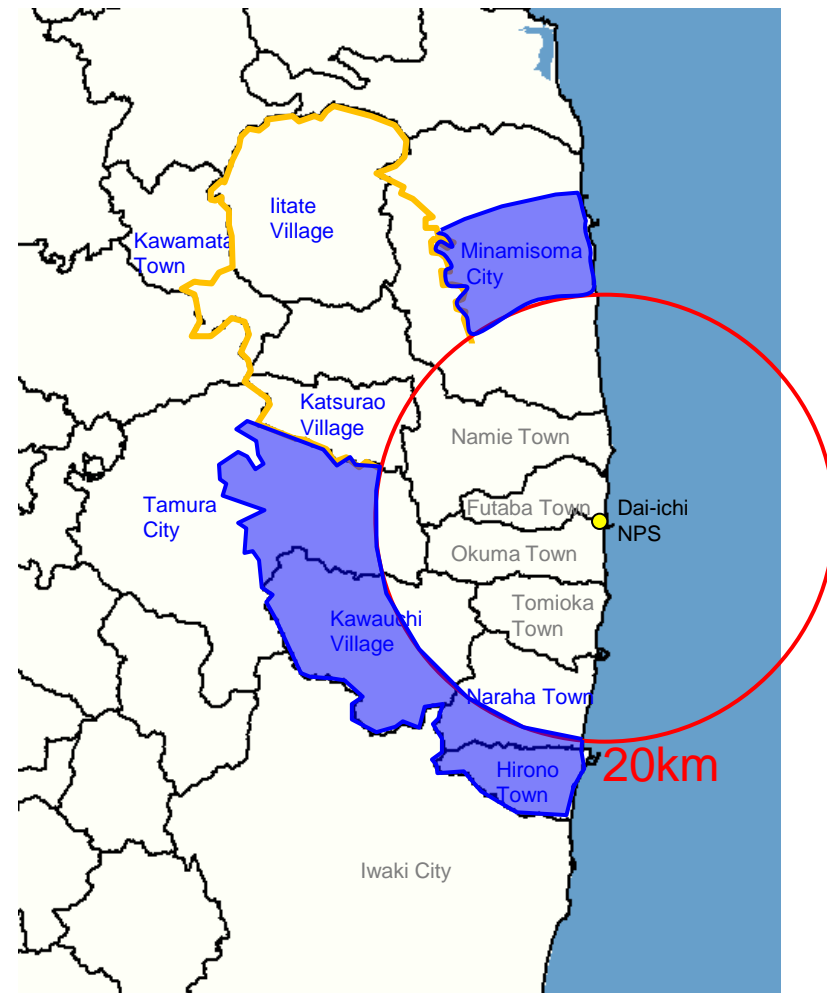
Evacuation prepared areas in case of emergency

- Designated as the areas excluding deliberate evacuation areas, among the areas of in-house evacuation on April 22, 2011.
- About 59,000 people in 5 municipalities.
- Required to remain prepared to move out of the areas or in-house evacuation in case of emergency regarding the NPS.



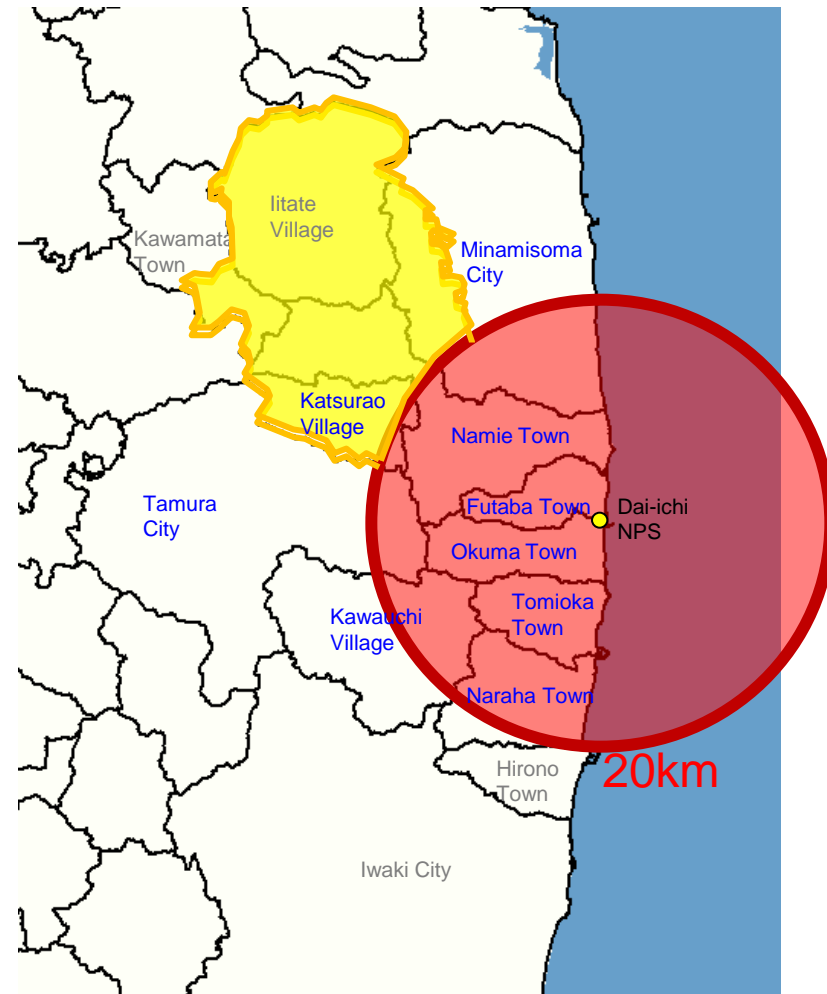
Lifting of evacuation prepared areas in case of emergency

- The government decided the basic concept for rearranging the areas of evacuation on August 9, 2011.
- The lifting of evacuation prepared areas in case of emergency was validated in terms of reactor safety (Step 1) and the air dose rate in the areas.
- On September 30, 2011, the areas were lifted after the restoration plans of concerned municipalities were developed.



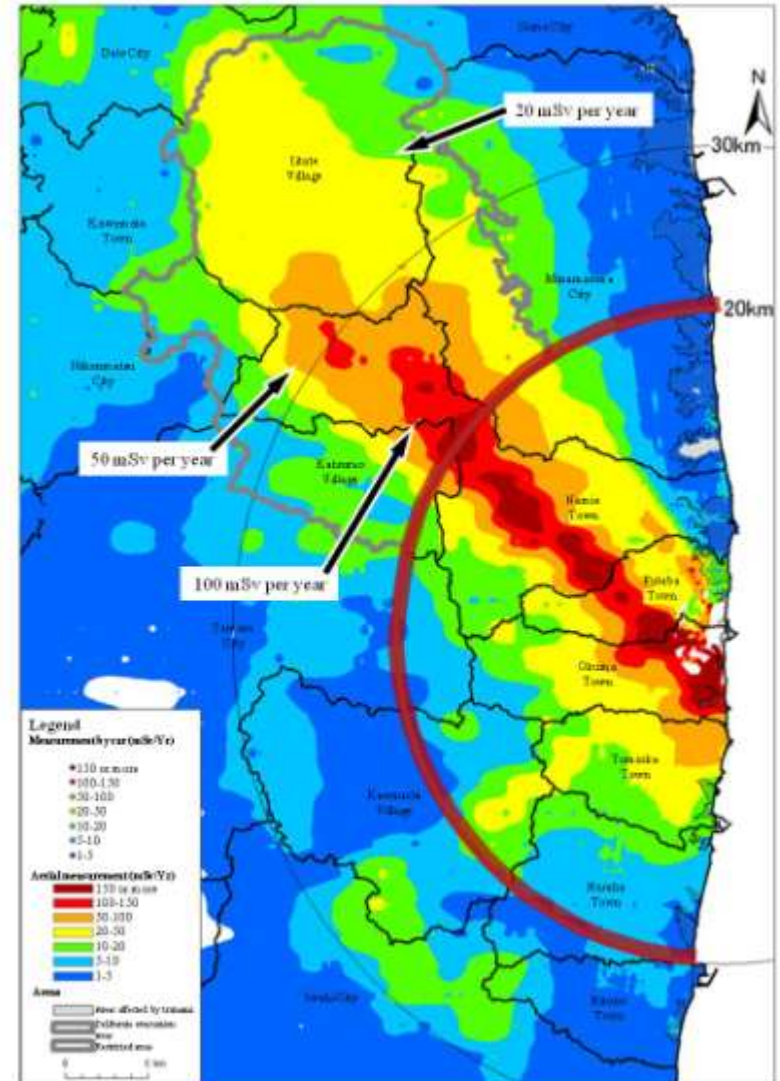
Rearranging the restricted areas and areas to which evacuation orders have been issued

- Decided by the government after the safety of the NPS was ensured by completion of Step 2 on December 26, 2011.
- The restricted areas will be lifted after considering the period for preparing tasks such as confirmation of infrastructure and security.
- The areas to which evacuation orders have been issued will be rearranged into 3 areas responding to the annual cumulative doses.

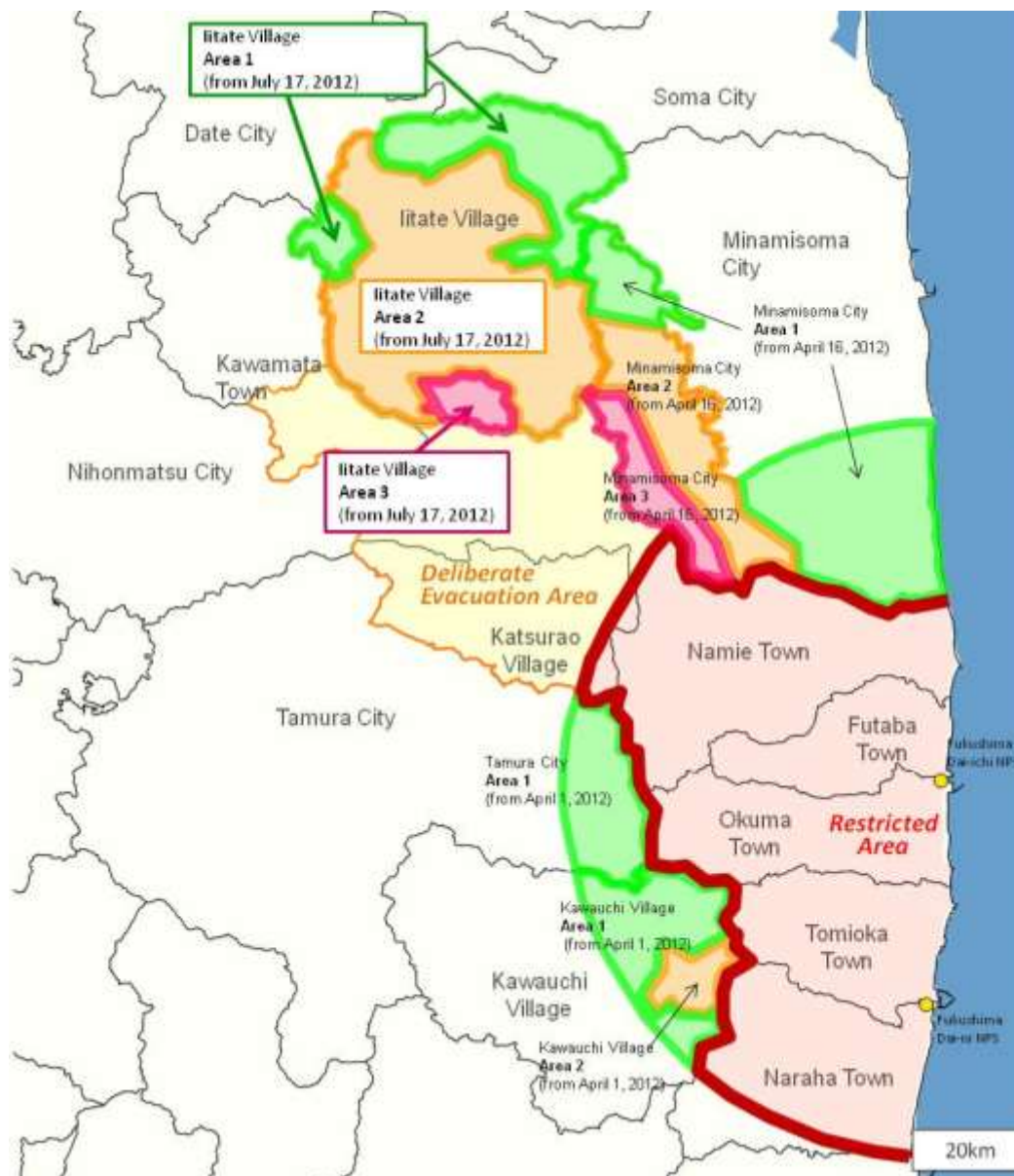


3 areas to be rearranged

1. Area 1 (<20mSv/y)
Supportive actions for restoring and reestablishing the areas, such as decontamination, restoring infrastructure, and employment measures, would be smoothly implemented for early return of residents.
2. Area 2 (>20mSv/y)
Certain measures, such as decontamination or infrastructure restoration, would be conducted according to the plan for return of residents and rebuilding their communities in the future
3. Area 3 (>50mSv/y where the cumulative dose is expected to be > 20 mSv/y within 5 years)
Actions would be taken through close talks with local governments and residents, such as providing the best possible living environment for residents facing prolonged evacuation, rebuilding their livelihoods, and sustaining the functions of municipal governments.



Current status of the areas



Recovery and Reconstruction

- Reconstruction Agency was established on February 10, 2012.
- Various supportive actions have been taken under the Act on Special Measures concerning the Recovery and Reconstruction of Fukushima which was enforced on March 30, 2012.

