

Summary

I. Statistics Table on Enterprises (Those with manufacturing establishments with four or more employees)

The Statistics Table on Enterprises indicates the activity status of manufacturing establishments with four or more employees by computing data after reclassifying it according to the enterprise units to which each establishment respectively belongs.

The number of manufacturing establishments with four or more employees in 2008 was 263,061 (up by 1.9% compared to the previous year) and if these establishments are recounted on an enterprise-unit basis, the number of enterprises was 237,974 (up by 2.2% id.). (Table 1 and Figure 1)

1. Number of enterprises

(1) Looking at the number of enterprises (237,974) in terms of management structure, the number of enterprises in the form of a company organization was 199,962 (up by 0.2 % compared to the previous year), accounting for 84.0% of the total number of enterprises. The number of enterprises established as an association or other was 2,050 (up by 2.6 % id.), accounting for 0.9% of the total, and the number of individually owned enterprises was 35,962 (up by 15.1 % id.), accounting for 15.1% of the total. (Table 1 and Table 2)

Figure 1: Changes in the Number of Enterprises by Management Structure

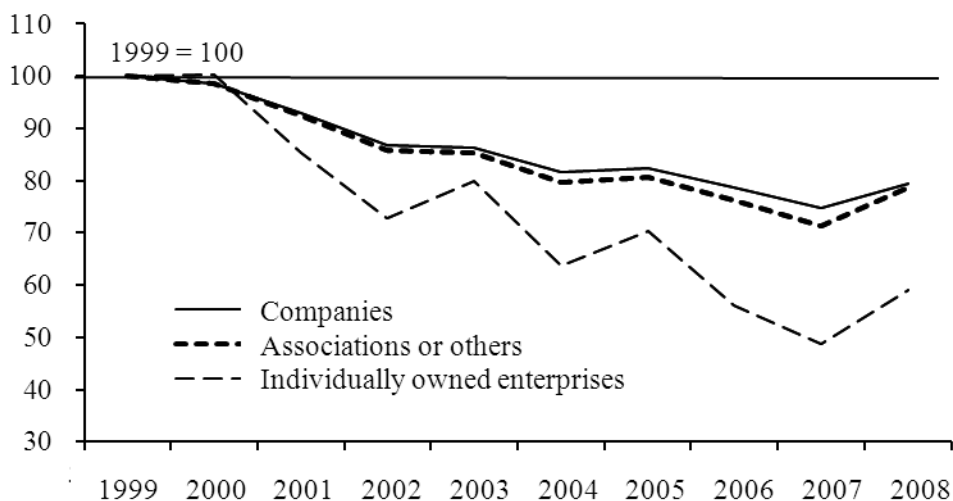


Table 1: Changes in the Number of Enterprises

	Total		Companies		Associations or others		Individually owned enterprises	
	(enterprises)	Y/Y (%)	(enterprises)	Y/Y (%)	(enterprises)	Y/Y (%)	(enterprises)	Y/Y (%)
1999	315,614	-8.0	252,108	-6.0	2,606	-6.6	60,900	-15.5
2000	312,341	-1.0	248,603	-1.4	2,568	-1.5	61,170	0.4
2001	288,802	-7.5	234,494	-5.7	2,407	-6.3	51,901	-15.2
2002	265,120	-7.5	218,466	-6.0	2,239	-4.6	44,415	-14.2
2003	268,787	1.4	217,892	-0.3	2,221	-0.8	48,674	9.6
2004	246,770	-8.2	205,826	-5.5	2,078	-6.4	38,866	-20.2
2005	252,574	2.4	207,676	0.9	2,100	1.1	42,798	10.1
2006	234,579	-7.1	198,381	-4.5	1,987	-5.4	34,211	-20.1
2007	232,780	-6.1	199,530	-4.9	1,999	-6.4	31,251	-13.2
2008	237,974	2.2	199,962	0.2	2,050	2.6	35,962	15.1

(Note 1) As the Japan Standard Industrial Classification was revised at the time of the 2002 Survey, year-on-year comparisons have been computed by reclassifying the 2001 classification.

(Note 2) As the figures and year-on-year comparisons for 2004 were calculated by incorporating the results of the "2004 Capture Survey of the Post-Niigata Chuetsu Earthquake," these figures are different from those indicated in the Statistics Table.

(Note 3) As a survey on establishments was conducted as part of the 2007 Survey, year-on-year comparisons have been computed by taking time series into account.

Furthermore, in all enterprises (237,974), the number of enterprises that hold only one establishment was 222,145 (up by 2.6 % compared to the previous year), accounting for the great majority of the total (93.3%), while the number of enterprises that hold two or more establishments was 15,829 (down by 2.1 % id.), accounting for 6.7 % of the total. (Table 2)

Table 2: Number of Business Establishments and Enterprises by Management Structure and per Capital Stratum

By management structure and per capital stratum	Number of establishments			Total number of enterprises		
		Y/Y (%)	Percentage by structure (%)		Y/Y (%)	Percentage by structure (%)
Total	263,061	1.9	100.0	237,974	2.2	100.0
Companies (total)	224,582	0.0	85.4	199,962	0.2	84.0
Companies (Capital less than 10 million yen)	73,233	3.3	27.8	72,065	3.4	30.3
Companies (Capital 10 to less than 30 million yen)	101,361	-1.5	38.5	94,232	-1.5	39.6
Companies (Capital 30 to less than 50 million yen)	17,675	-1.8	6.7	14,426	-1.2	6.1
Companies (Capital 50 to less than 100 million yen)	14,628	-1.0	5.6	10,586	-1.0	4.4
Companies (Capital 100 to less than 300 million yen)	5,761	-1.8	2.2	3,732	-2.0	1.6
Companies (Capital 300 million to less than 1 billion yen)	4,752	-0.6	1.8	2,575	-1.7	1.1
Companies (Capital 1 to less than 10 billion yen)	4,419	-1.8	1.7	1,816	-2.8	0.8
Companies (Capital 10 billion yen or more)	2,753	0.0	1.0	530	1.1	0.2
Associations or others	2,442	1.8	0.9	2,050	2.6	0.9
Individually owned enterprises	36,037	15.1	13.7	35,962	15.1	15.1

By management structure and per capital stratum	Enterprises that hold only one (1) establishment				Enterprises that hold two (2) or more establishments			
		Y/Y	Percentage by structure	Percentage of enterprises holding establishment		Y/Y	Percentage by structure	Percentage of enterprises holding establishment
		(%)	(%)	(%)		(%)	(%)	(%)
Total	222,145	2.6	100.0	93.3	15,829	-2.1	100.0	6.7
Companies (total)	184,383	0.4	83.0	92.2	15,579	-2.2	98.4	7.8
Companies (Capital less than 10 million yen)	71,006	3.4	32.0	98.5	1,059	-0.2	6.7	1.5
Companies (Capital 10 to less than 30 million yen)	88,314	-1.5	39.8	93.7	5,918	-2.3	37.4	6.3
Companies (Capital 30 to less than 50 million yen)	12,060	-0.6	5.4	83.6	2,366	-4.2	14.9	16.4
Companies (Capital 50 to less than 100 million yen)	7,929	-0.7	3.6	74.9	2,657	-1.8	16.8	25.1
Companies (Capital 100 to less than 300 million yen)	2,591	-1.9	1.2	69.4	1,141	-2.3	7.2	30.6
Companies (Capital 300 million to less than 1 billion yen)	1,590	-1.9	0.7	61.7	985	-1.5	6.2	38.3
Companies (Capital 1 to less than 10 billion yen)	795	-4.2	0.4	43.8	1,021	-1.7	6.5	56.2
Companies (Capital 10 billion yen or more)	98	2.1	0.0	18.5	432	0.9	2.7	81.5
Associations or others	1,870	2.6	0.8	91.2	180	2.3	1.1	8.8
Individually owned enterprises	35,892	15.1	16.2	99.8	70	18.6	0.4	0.2

(Note) The percentage by structure is the percentage by management structure and per capital stratum against the total. The percentage of enterprises holding establishment is the percentage of enterprises with only one (1) establishment and those with two (2) or more establishments among the total number of enterprises.

2. Number of employees

(1) The number of employees was 8,364,607 (down by 1.8% compared to the previous year). On a management structure basis, the number of employees of enterprises in the form of a company organization was 8,082,908 (down by 2.0% id.), accounting for 96.6% of the total. The number of employees of associations or other was 56,040 (down by 1.6% id.), accounting for 0.7% of the total, and the number of employees of individually owned enterprises was 225,659 (up by 7.4% id.), accounting for 2.7% of the total. (Table 3, Table 4 and Figure 2)

Figure 2: Changes in the Number of Employees by Management Structure

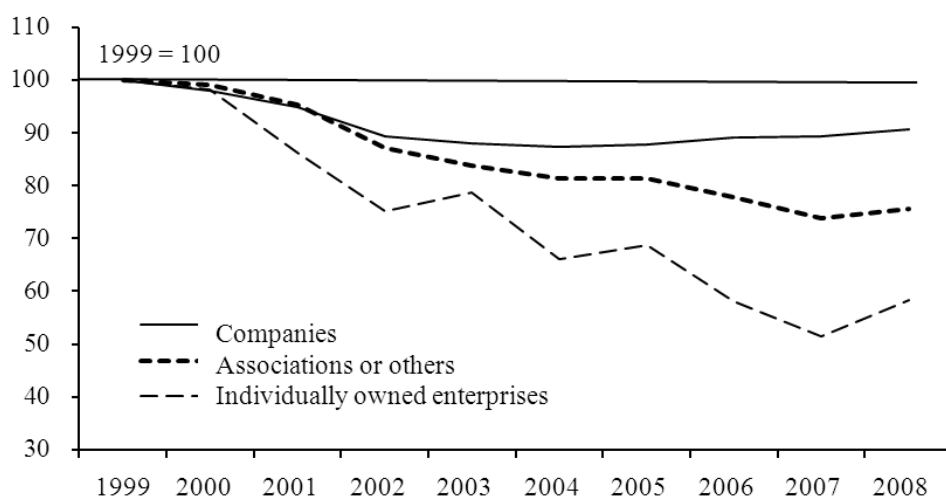


Table 3: Changes in the Number of Employees by Management Structure

	Total		Companies		Associations or others		Individually owned enterprises	
	(persons)	Y/Y (%)	(persons)	Y/Y (%)	(persons)	Y/Y (%)	(persons)	Y/Y (%)
	1999	9,377,750	-4.7	8,917,429	-4.2	76,852	-6.4	386,187
2000	9,183,833	-2.1	8,731,498	-2.1	74,134	-3.5	378,805	-1.9
2001	8,866,220	-3.5	8,462,528	-3.1	73,530	-0.8	332,941	-12.1
2002	8,323,589	-4.9	7,969,060	-4.6	70,751	-3.8	289,964	-12.7
2003	8,226,302	-1.2	7,859,794	-1.4	64,565	-4.3	304,325	5.0
2004	8,111,614	-1.4	7,796,031	-0.8	62,183	-3.7	255,241	-16.1
2005	8,156,992	0.6	7,831,198	0.5	60,342	-3.0	265,532	4.0
2006	8,225,442	0.8	7,943,497	1.4	60,262	-0.1	224,279	-15.5
2007	8,518,545	0.1	8,251,507	0.4	56,971	-5.0	210,067	-11.4
2008	8,364,607	-1.8	8,082,908	-2.0	56,040	-1.6	225,659	7.4

(Note 1) As the Japan Standard Industrial Classification was revised at the time of the 2002 Survey, year-on-year comparisons have been computed by reclassifying the 2001 classification.

(Note 2) As the figures and year-on-year comparisons for 2004 were calculated by incorporating the results of the "2004 Capture Survey of the Post-Niigata Chuetsu Earthquake," these figures are different from those indicated in the Statistics Table.

(Note 3) As a survey on establishments was conducted as part of the 2007 Survey, year-on-year comparisons have been computed by taking time series into account.

Furthermore, the number of employees in enterprises with one establishment was 4,458,237 (composition ratio in all enterprises: 53.3%), down by 2.3% compared to the previous year, and the number of employees in enterprises with two or more establishments was 3,906,370 (46.7% id.), a decrease of 1.3% compared to the previous year.

Looking at the composition ratio by management structure and per capital stratum, the majority of the companies with capital less than 10 million yen were enterprises with one establishment, accounting for 95.1%, whereas most of the companies with capital more than 10 billion yen were enterprises with two or more establishments, accounting for an extremely high proportion, 95.7%. (Table 4)

Table 4: Number of Employees by Management Structure and per Capital Stratum

By management structure and per capital stratum	Enterprises (total)											
				Enterprises that hold only one (1) establishment				Enterprises that hold two (2) or more establishments				
	(persons)	Y/Y (%)	Percentage by structure (%)	(persons)	Y/Y (%)	Percentage by structure (%)	Percentage of enterprises holding establishment (%)	(persons)	Y/Y (%)	Percentage by structure (%)	Percentage of enterprises holding establishment (%)	
Total	8,364,607	-1.8	100.0	4,458,237	-2.3	100.0	53.3	3,906,370	-1.3	100.0	46.7	
Companies (total)	8,082,908	-2.0	96.6	4,196,228	-2.7	94.1	51.9	3,886,680	-1.3	99.5	48.1	
Companies (Capital less than 10 million yen)	712,622	-1.7	8.5	677,539	-1.5	15.2	95.1	35,083	-5.4	0.9	4.9	
Companies (Capital 10 to less than 30 million yen)	2,027,624	-3.8	24.2	1,660,841	-3.7	37.3	81.9	366,783	-4.2	9.4	18.1	
Companies (Capital 30 to less than 50 million yen)	743,711	-2.0	8.9	483,165	-1.8	10.8	65.0	260,546	-2.5	6.7	35.0	
Companies (Capital 50 to less than 100 million yen)	965,766	-1.9	11.5	539,148	-1.1	12.1	55.8	426,618	-2.9	10.9	44.2	
Companies (Capital 100 to less than 300 million yen)	556,105	-2.3	6.6	272,287	-3.5	6.1	49.0	283,818	-1.1	7.3	51.0	
Companies (Capital 300 million to less than 1 billion yen)	649,655	-2.1	7.8	273,727	-3.4	6.1	42.1	375,928	-1.1	9.6	57.9	
Companies (Capital 1 to less than 10 billion yen)	926,578	-1.5	11.1	224,239	-5.4	5.0	24.2	702,339	-0.2	18.0	75.8	
Companies (Capital 10 billion yen or more)	1,500,847	-0.1	17.9	65,282	4.2	1.5	4.3	1,435,565	-0.3	36.7	95.7	
Associations or others	56,040	-1.6	0.7	38,120	-1.6	0.9	68.0	17,920	-1.6	0.5	32.0	
Individually owned enterprises	225,659	7.4	2.7	223,889	7.4	5.0	99.2	1,770	14.3	0.0	0.8	

(Note) The percentage by structure is the percentage by management structure and per capital stratum against the total. The percentage of enterprises holding establishment is the percentage of enterprises with only one (1) establishment and those with two (2) or more establishments among the total number of enterprises.

3. Value of product shipments

(1) The value of manufactured goods shipments (hereinafter referred to as “value of shipments”) was 335 trillion 578.8 billion yen, down by 0.3% compared to the previous year. In terms of management structure, the value of shipments in enterprises in the form of a company was 333 trillion 195.4 billion yen, down by 0.4% id., accounting for 99.3% of the total. The value of shipments in enterprises in the form of associations or others was 1 trillion 193.4 billion yen, up by 1.1% id., accounting for 0.4% of the total and that in individually owned enterprises was 1 trillion.190 billion yen, up by 2.9% id., accounting for 0.4% of the total. (Table 5 and Table 6)

Table 5: Changes in the Value of Shipments by Management Structure

	Total		Companies		Associations or others		Individually owned enterprises	
	(million yen)	Y/Y (%)	(million yen)	Y/Y (%)	(million yen)	Y/Y (%)	(million yen)	Y/Y (%)
1999	291,449,554	-4.7	287,455,033	-4.6	1,755,544	-1.2	2,238,978	-15.2
2000	300,477,604	3.1	296,665,371	3.2	1,641,850	-6.5	2,170,383	-3.1
2001	286,667,406	-4.6	283,312,536	-4.5	1,542,973	-6.0	1,811,897	-16.5
2002	269,361,805	-4.4	266,509,502	-4.4	1,287,194	-7.5	1,565,110	-13.4
2003	273,409,438	1.5	270,606,342	1.5	1,226,278	-4.7	1,576,818	0.7
2004	283,475,718	3.7	280,890,543	3.8	1,212,178	-1.1	1,372,996	-12.9
2005	295,345,543	4.2	292,745,036	4.2	1,199,235	-1.1	1,401,272	2.1
2006	314,834,621	6.6	312,470,597	6.7	1,149,488	-4.1	1,214,536	-13.3
2007	336,756,635	-	334,419,058	-	1,180,738	-	1,156,840	-
2008	335,578,825	-0.3	333,195,424	-0.4	1,193,380	1.1	1,190,022	2.9

(Note 1) As the Japan Standard Industrial Classification was revised at the time of the 2002 survey, year-on-year comparisons have been computed by reclassifying the 2001 classification.

(Note 2) As the figures and year-on-year comparisons for 2004 were calculated by incorporating the results of the "2004 Capture Survey of the Post-Niigata Chuetsu Earthquake," these figures are different from those indicated in the Statistics Table.

(Note 3) As survey items were changed in the 2007 survey, the value of shipments in 2007 is not related to that of the previous year.

The value of shipments in enterprises with one establishment was 109 trillion 223.8 billion yen, accounting for 32.5% of the total value across all enterprises and the value of shipments in enterprises with two or more establishments was 226 trillion 355.1 billion yen, accounting for 67.5% of the total. (Table 6)

It should be noted that while the enterprises with one establishment accounted for 93.3% of the total number of enterprises and employed more than half of all employees (53.3%), their proportion in the value of shipments was not more than one-third of the total (32.5%).

Table 6: Value of Shipments by Management Structure and per Capital Stratum

By management structure and per capital stratum	Enterprises (total)										
				Enterprises that hold only one (1) establishment				Enterprises that hold two (2) or more establishments			
	(million yen)	Y/Y (%)	Percentage by structure (%)	(million yen)	Y/Y (%)	Percentage by structure (%)	Percentage of enterprises holding establishment (%)	(million yen)	Y/Y (%)	Percentage by structure (%)	Percentage of enterprises holding establishment (%)
Total	335,578,825	-0.3	100.0	109,223,753	-1.7	100.0	32.5	226,355,072	0.3	100.0	67.5
Companies (total)	333,195,424	-0.4	99.3	107,363,682	-1.7	98.3	32.2	225,831,741	0.3	99.8	67.8
Companies (Capital less than 10 million yen)	7,023,483	-1.2	2.1	6,636,634	-1.4	6.1	94.5	386,849	1.8	0.2	5.5
Companies (Capital 10 to less than 30 million yen)	36,111,719	-1.8	10.8	28,469,257	-2.1	26.1	78.8	7,642,462	-0.7	3.4	21.2
Companies (Capital 30 to less than 50 million yen)	17,891,832	-0.1	5.3	11,624,395	0.4	10.6	65.0	6,267,436	-1.1	2.8	35.0
Companies (Capital 50 to less than 100 million yen)	27,875,439	1.2	8.3	14,954,502	0.8	13.7	53.6	12,920,937	1.8	5.7	46.4
Companies (Capital 100 to less than 300 million yen)	19,578,631	2.3	5.8	9,911,915	2.0	9.1	50.6	9,666,717	2.6	4.3	49.4
Companies (Capital 300 million to less than 1 billion yen)	27,567,688	-2.1	8.2	12,434,161	-2.8	11.4	45.1	15,133,527	-1.5	6.7	54.9
Companies (Capital 1 to less than 10 billion yen)	53,777,473	-0.6	16.0	16,403,499	-5.0	15.0	30.5	37,373,974	1.4	16.5	69.5
Companies (Capital 10 billion yen or more)	143,369,158	-0.2	42.7	6,929,319	-4.4	6.3	4.8	136,439,839	0.0	60.3	95.2
Associations or others	1,193,380	1.1	0.4	683,163	-1.2	0.6	57.2	510,217	4.3	0.2	42.8
Individually owned enterprises	1,190,022	2.9	0.4	1,176,907	2.8	1.1	98.9	13,114	8.0	0.0	1.1

(Note) The percentage by structure is the percentage by management structure and per capital stratum against the total. The percentage of enterprises holding establishment is the percentage of enterprises with only one (1) establishment and those with two (2) or more establishments among the total number of enterprises.

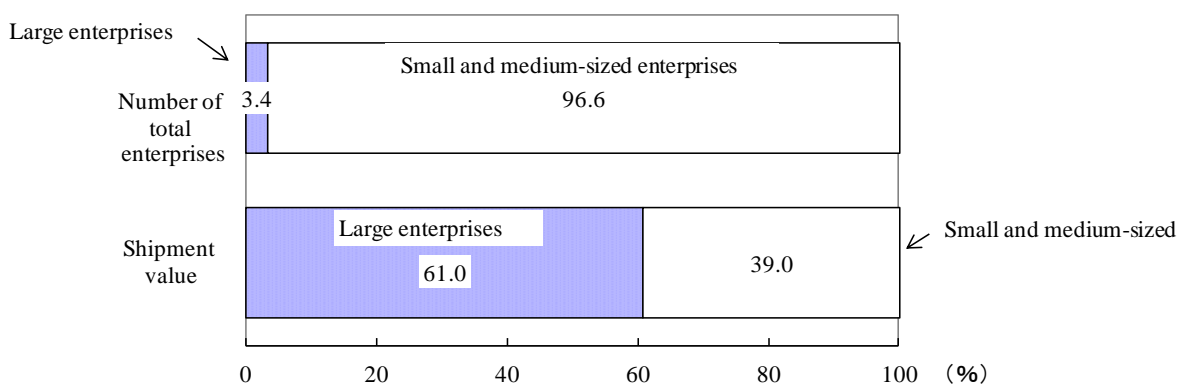
II. Enterprise Share by Manufactured Commodity

In this section, the shares for the commodities surveyed in the 2008 Census of Manufactures by large enterprise and small and medium-sized enterprise and the degree of concentration of top enterprises are verified by sorting the establishment-based data given in the Census of Manufactures into those on the basis of enterprises. The analysis was conducted using shipment values for 1,796 manufactured commodities.

1. Composition ratio by large enterprise and small and medium-sized enterprise

Looking at the composition ratios by commodity and size of enterprises, ^(Note 1) large enterprises accounted for 3.4% of the total enterprises, ^(Note 2) while small and medium-sized enterprises accounted for 96.6% of the total enterprises, showing significantly high ratio. On a shipment value basis, however, large enterprises accounted for 61.0% of the total enterprises, showing conversely high in large enterprises at the ratio, while small and medium-sized enterprises accounted for 39.0% of the total enterprises. (Figure 3)

Figure 3: Composition Ratio of the Total Enterprises and Shipment Value by Commodity and Size of Enterprise (2008, based on enterprise commodities)



Note: In this section, manufactured commodities are calculated by enterprise unit. Therefore, the data differ from the values in the previous section.

Note 1: The definitions of a large enterprise and a small and medium-sized enterprise are as follows:

Large enterprise: An enterprise with capital of more than 300 million yen and a workforce of more than 300 persons in "Company"; an enterprise with more than 300 persons in "Associations or others" or "Individually owned enterprises"

Small and medium-sized enterprise: An enterprise with capital of 300 million yen or less and a workforce of 300 persons or less in "Company"; an enterprise with a workforce of 300 persons or less in "Associations or others" or "Individually owned enterprises"

Note 2: The expression "number of total enterprises" is used because enterprises with shipments of more than one commodity are counted as "one" in each commodity category since data by commodity and enterprise are used in this section.

Note 3: The data described here refer to value-of-shipment-based data in enterprises with establishments (factories) engaged in the manufacturing industry in Japan. They differ from shares such as market share. This reason is:

- (i) There are differences in units (amount, number and weight base, etc.), survey years, and definition and range of commodities;
- (ii) The data in this section are value-of-shipment-based data of domestic factories (including export and excluding import), while shares such as market share generally refer to domestic share (excluding export and including import);
- (iii) The data of subsidiaries, affiliated factories, and OEM and EMS* manufacturers are regarded as those of independent enterprises, while shares such as market share generally include data of the product brand or manufacturer.

* OEM: stands for Original Equipment Manufacturer and means product supply by partner brand.

EMS: stands for Electronics Manufacturing Services and means outsourced production of items, including printed circuit boards.

Looking at the total number of enterprises by commodity category in percentage by size of enterprises, large enterprises showed a high ratio of commodity categories such as “Chemical and allied products”, “Petroleum and coal products”, “Information and communication electronics equipment” and “Electronic parts and devices”. On the other hand, small and medium-sized enterprises showed a high ratio of commodity categories such as “Lumber and wood products”, “Leather tanning, leather products and fur skins”, “Furniture and fixtures” and “Printing and allied industries”. (Table7)

**Table 7: Total Enterprises by Commodity Category
(2008, based on enterprise commodities)**

Commodity category	Total enterprises						
	(enterprises)	Large enterprises			Small and medium-sized enterprises		
		(enterprises)	Percentage by size of enterprises (%)	Percentage by industry (%)	(enterprises)	Percentage by size of enterprises (%)	Percentage by industry (%)
00 Total	307,712	10,418	3.4	100.0	297,294	96.6	100.0
09 Food	46,571	843	1.8	8.1	45,728	98.2	15.4
10 Beverages, tobacco and feed	7,574	243	3.2	2.3	7,331	96.8	2.5
11 Textile mill products	12,383	180	1.5	1.7	12,203	98.5	4.1
12 Lumber and wood products	17,456	49	0.3	0.5	17,407	99.7	5.9
13 Furniture and fixtures	13,121	64	0.5	0.6	13,057	99.5	4.4
14 Pulp, paper and paper products	8,210	280	3.4	2.7	7,930	96.6	2.7
15 Printing and allied products	13,810	83	0.6	0.8	13,727	99.4	4.6
16 Chemical and allied products	8,809	1,393	15.8	13.4	7,416	84.2	2.5
17 Petroleum and coal products	815	129	15.8	1.2	686	84.2	0.2
18 Plastic products	17,137	535	3.1	5.1	16,602	96.9	5.6
19 Rubber products	3,711	154	4.1	1.5	3,557	95.9	1.2
20 Leather tanning, leather products and fur skins	1,959	6	0.3	0.1	1,953	99.7	0.7
21 Ceramic, stone and clay products	13,890	295	2.1	2.8	13,595	97.9	4.6
22 Iron and steel	9,099	473	5.2	4.5	8,626	94.8	2.9
23 Non-ferrous metals and products	5,550	365	6.6	3.5	5,185	93.4	1.7
24 Fabricated metal products	32,023	418	1.3	4.0	31,605	98.7	10.6
25 General machinery	11,862	569	4.8	5.5	11,293	95.2	3.8
26 Production machinery	31,346	949	3.0	9.1	30,397	97.0	10.2
27 Business oriented machinery	7,774	330	4.2	3.2	7,444	95.8	2.5
28 Electronic parts and devices	4,408	629	14.3	6.0	3,779	85.7	1.3
29 Electrical machinery, equipment and supplies	14,590	935	6.4	9.0	13,655	93.6	4.6
30 Information and communication electronics equipment	3,066	485	15.8	4.7	2,581	84.2	0.9
31 Transportation equipment	10,383	870	8.4	8.4	9,513	91.6	3.2
32 Miscellaneous manufacturing products	12,165	141	1.2	1.4	12,024	98.8	4.0

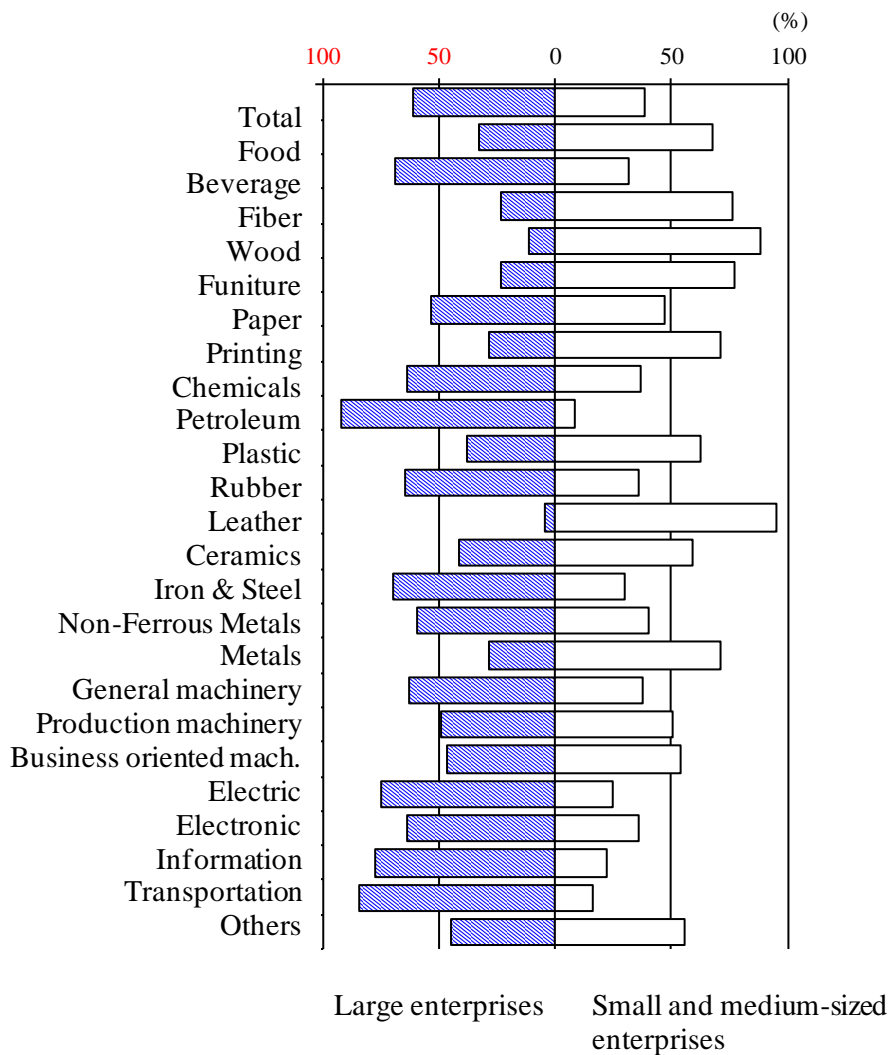
(Note 1) Commodity categories are those compiled by the initial two digits of six-digit commodity numbers.

(Note 2) The data in this section differ from those in the Report by Industry and Report by Commodity because calculations are based on the initial two digits for the commodities and enterprises.

(Note 3) The commodity names in the above table are names of categories of manufactured commodities. Therefore, they differ from industrial classification used in other reports, including Report by Industry.

Looking at the value of shipments, large enterprises showed a high ratio of commodities such as “Petroleum and coal products”, “Transportation equipment” and “Information and communication electronics equipment”. Small and medium-sized enterprises showed a high ratio of commodities such as “Leather tanning, leather products and fur skins”, “Lumber and wood products” and “Furniture and fixtures.” (Table 8 and Figure 4)

Figure 4: Composition Ratio of Shipment Value by Commodity Category (2008, based on enterprise commodities)



**Table 8: Shipment Value by Commodity Category
(2008, based on enterprise commodities)**

Commodity category	Shipment value						
	(million yen)	Large enterprises			Small and medium-sized enterprises		
		(million yen)	Percentage by size of enterprises (%)	Percentage by industry (%)	(million yen)	Percentage by size of enterprises (%)	Percentage by industry (%)
00 Total	303,725,898	185,408,716	61.0	100.0	118,317,182	39.0	100.0
09 Food	23,380,224	7,521,068	32.2	4.1	15,859,156	67.8	13.4
10 Beverages, tobacco and feed	9,678,102	6,629,839	68.5	3.6	3,048,262	31.5	2.6
11 Textile mill products	3,501,075	818,258	23.4	0.4	2,682,817	76.6	2.3
12 Lumber and wood products	2,298,736	258,225	11.2	0.1	2,040,511	88.8	1.7
13 Furniture and fixtures	1,884,401	433,960	23.0	0.2	1,450,441	77.0	1.2
14 Pulp, paper and paper products	7,238,052	3,827,515	52.9	2.1	3,410,537	47.1	2.9
15 Printing and allied products	5,732,239	1,621,703	28.3	0.9	4,110,536	71.7	3.5
16 Chemical and allied products	27,013,408	17,138,950	63.4	9.2	9,874,458	36.6	8.3
17 Petroleum and coal products	13,266,177	12,156,048	91.6	6.6	1,110,129	8.4	0.9
18 Plastic products	11,100,982	4,139,932	37.3	2.2	6,961,050	62.7	5.9
19 Rubber products	3,289,306	2,107,497	64.1	1.1	1,181,809	35.9	1.0
20 Leather tanning, leather products and fur skins	433,397	18,254	4.2	0.0	415,143	95.8	0.4
21 Ceramic, stone and clay products	7,552,510	3,085,142	40.8	1.7	4,467,368	59.2	3.8
22 Iron and steel	22,568,660	15,677,718	69.5	8.5	6,890,942	30.5	5.8
23 Non-ferrous metals and products	9,477,705	5,621,180	59.3	3.0	3,856,526	40.7	3.3
24 Fabricated metal products	12,435,944	3,516,762	28.3	1.9	8,919,183	71.7	7.5
25 General machinery	11,182,967	6,984,381	62.5	3.8	4,198,585	37.5	3.5
26 Production machinery	17,867,633	8,765,819	49.1	4.7	9,101,814	50.9	7.7
27 Business oriented machinery	8,017,722	3,698,081	46.1	2.0	4,319,641	53.9	3.7
28 Electronic parts and devices	18,788,044	14,075,352	74.9	7.6	4,712,692	25.1	4.0
29 Electrical machinery, equipment and supplies	16,010,572	10,221,756	63.8	5.5	5,788,816	36.2	4.9
30 Information and communication electronics equipment	12,978,404	10,075,658	77.6	5.4	2,902,746	22.4	2.5
31 Transportation equipment	53,989,016	45,225,749	83.8	24.4	8,763,267	16.2	7.4
32 Miscellaneous manufacturing products	4,040,621	1,789,869	44.3	1.0	2,250,752	55.7	1.9

(Note 1) The data in this section differ from those in the Report by Industry and Report by Commodity because calculations are based on the initial two digits for the commodities and enterprises.

(Note 2) The commodity names in the above table are names of categories of manufactured commodities. Therefore, they differ from industrial classification used in other reports, including Report by Industry.

2. Share held by top three enterprises

Looking at the share held by the top three enterprises of each commodity, the most common was “40% or more to less than 50%”, followed by “60% or more to less than 70%”, “30% or more to less than 40%” and “90% or more to less than 100%.” The number of commodities which the share held by the top three enterprises accounted for more than 50% was 963.

They were 53.6% and more than 50% of all commodities. (Table 9 and Figure 5)

Figure 5: Composition Ratio by Share Held by Top Three Enterprises (2008, based on enterprise commodities)

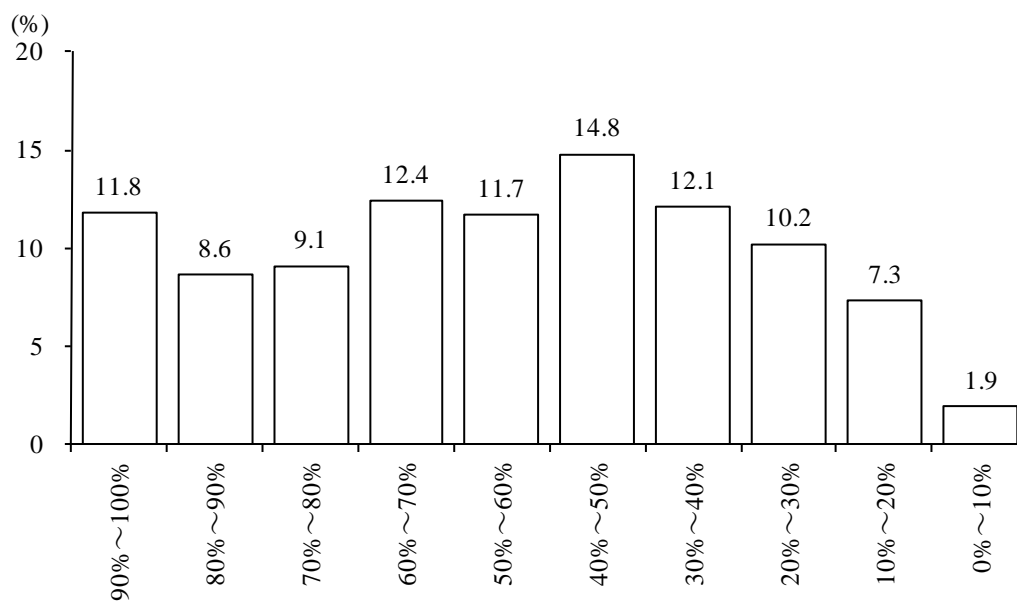


Table 9: Share Held by Top Three Enterprises by Commodity Category (2008, based on enterprise commodities)

	Total	Food	Beverage	Fiber	Wood	Furniture	Paper	Printing	Chemicals	Petroleum	Plastic	Rubber	Leather	Ceramics	Iron & Steel	Non-Ferrous Metals	Metals	General Machinery	Production Machinery	Business Oriented Machinery	Electronic Parts & Devices	Electric machinery	Information & Communication	Transportation	Others
Total	1796	93	29	175	39	21	56	9	202	24	43	40	34	110	65	52	104	74	144	76	57	109	58	76	106
90%-100%	212	3	3	14	2	1	5	0	51	6	1	6	2	14	17	9	5	4	11	9	6	6	10	18	9
80%-90%	154	3	5	6	0	1	1	0	18	3	3	6	4	9	9	2	5	9	13	7	8	14	8	10	10
70%-80%	164	5	1	17	1	0	4	1	13	2	2	4	3	14	8	6	7	7	8	8	7	15	9	9	13
60%-70%	223	8	3	16	3	1	12	1	32	9	1	4	7	6	10	11	14	8	13	7	8	16	12	11	10
50%-60%	210	12	1	22	3	1	7	0	27	2	3	7	4	13	3	6	9	9	15	14	12	10	8	7	15
40%-50%	265	7	3	38	5	3	6	3	38	0	4	3	3	22	6	6	18	9	23	10	8	22	4	8	16
30%-40%	218	17	3	27	3	4	9	2	12	2	3	3	5	14	4	7	11	16	24	13	3	13	6	6	11
20%-30%	184	11	6	18	12	4	8	0	8	0	13	4	2	7	5	3	16	6	22	7	4	8	1	3	16
10%-20%	131	18	4	16	7	4	3	2	3	0	11	2	4	6	2	2	13	6	12	1	1	5	0	4	5
0%-10%	35	9	0	1	3	2	1	0	0	0	2	1	0	5	1	0	6	0	3	0	0	0	0	0	1