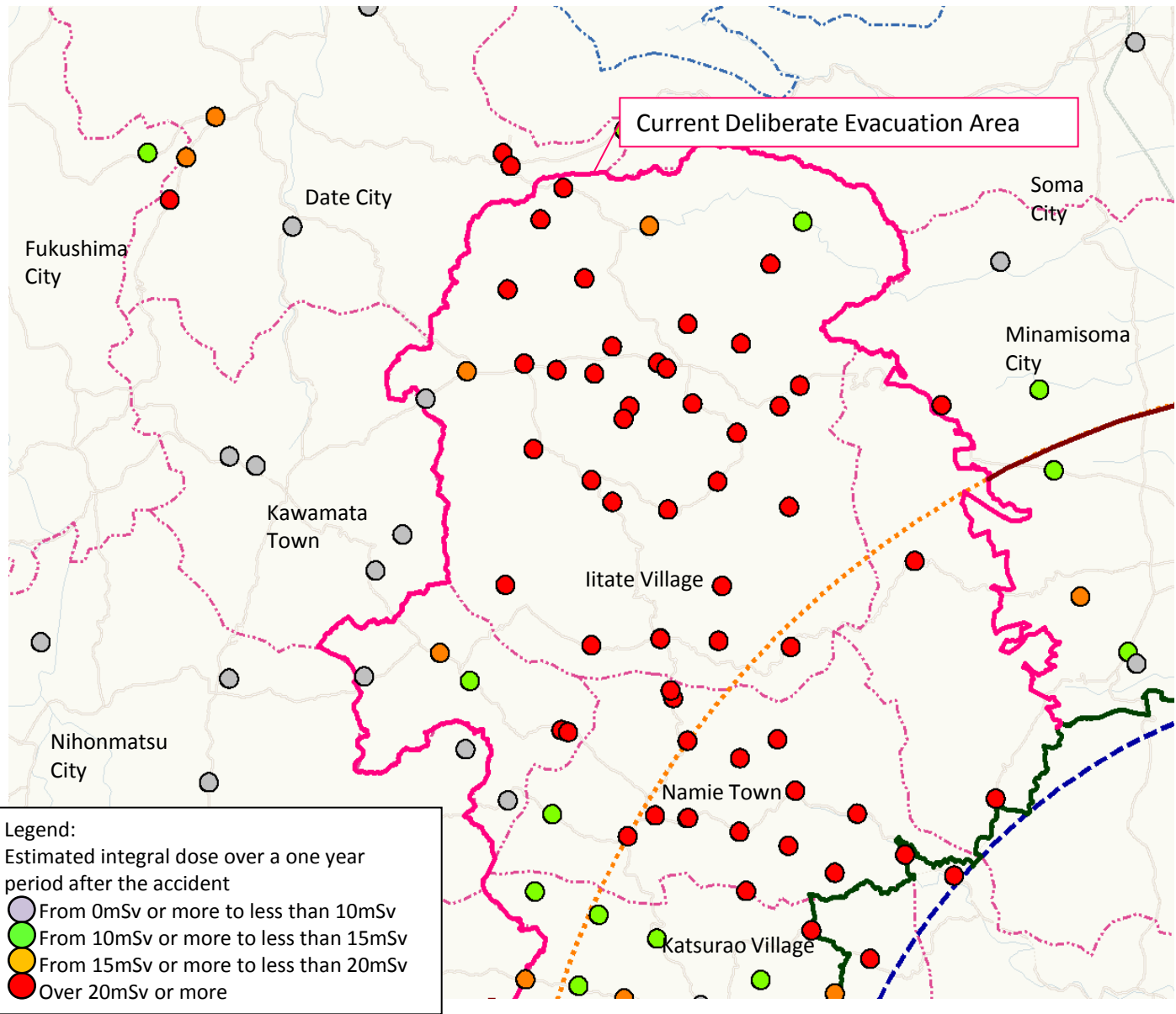


Deliberate Evacuation Area and Specific Spots Recommended for Evacuation



Based on the material published by the Ministry of Education, Culture, Sports, Science and Technology on 3 June

	Deliberate Evacuation Area	Specific Spots Recommended for Evacuation
Applicable Area	Spots with an integral dose over a one year period after the accident exceeding 20mSv are wide spread within the area.	Spots exist in some areas where an integral dose over a one year period after the accident exceeds 20mSv (Exist per residence that is not easy to decontaminate).
Safety Viewpoint	There is a risk of exceeding 20mSv through daily life in general.	The dose decreases by moving away from high dose spots, so a risk of exceeding 20mSv through daily life in general is low.
Governmental Response	Deliberate evacuation (The Government requires across-the-board evacuation.)	Call for attention, provision of information, evacuation assistance, etc. (The Government does not require across-the-board evacuation.)