

Project to Promote the Development and Introduction of Robotic Devices for Nursing Care

Budget: ¥2.55 billion (¥2.39 billion)

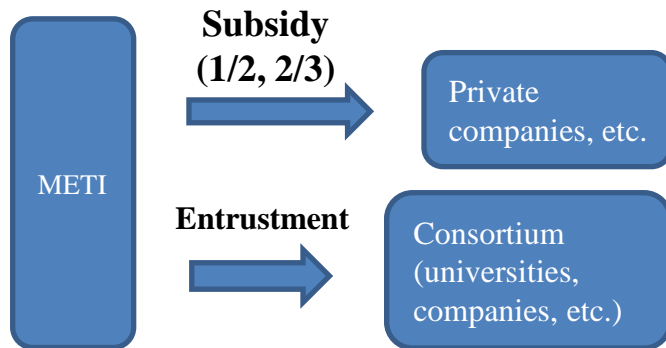
Industrial Machinery Division,
Manufacturing Industries Bureau, METI
Tel: 03-3501-1691

Outline of the Project

Objective & Outline

- This project focuses on promoting the development and the introduction of robotic devices for nursing care, which will contribute to the independence of the elderly and the reduction of the burden on caregivers.
- This project will subsidize enterprises and other entities which develop robotic devices for nursing care in the “Priority Areas to which Robot Technology is to be Introduced in Nursing Care of the Elderly,” which METI and MHLW jointly designated based on the needs at actual nursing care sites. It will also prepare the environment necessary for introducing robotic devices into such facilities, including by formulating standards.

Project Structure & Scheme

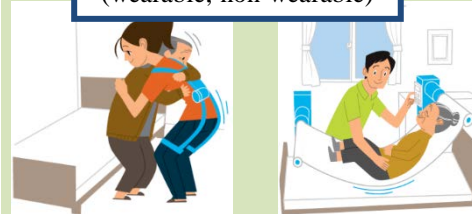


Project Image

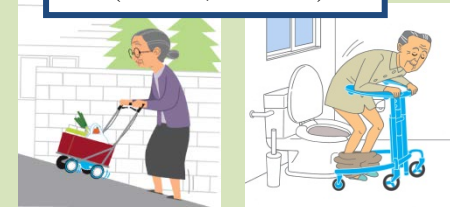
I. Subsidy for the Development of Robotic Devices for Five Priority Areas

Priority Areas to Which Robot Technology is to be Introduced in Nursing Care of the Elderly (announced by METI and MHLW in Nov. 2012 and revised in Feb. 2014)

Lifting aids
(wearable, non-wearable)



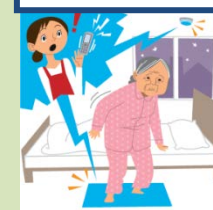
Mobility aids
(indoors, outdoors)



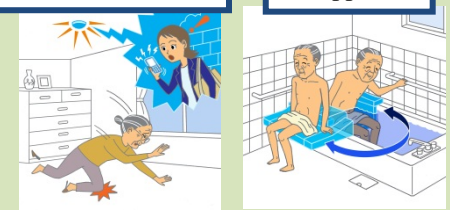
Toilet support



Monitoring system for people with senile dementia (at facilities, at home)



Bathing support



II. Preparing the Environment for Introducing such Robotic Devices into Actual Facilities

- Formulating standards for safety, performance and ethics of such devices, assessing and selecting highly effective devices, and promoting the demonstration of the devices at actual nursing care sites or the introduction of the devices into such facilities.