

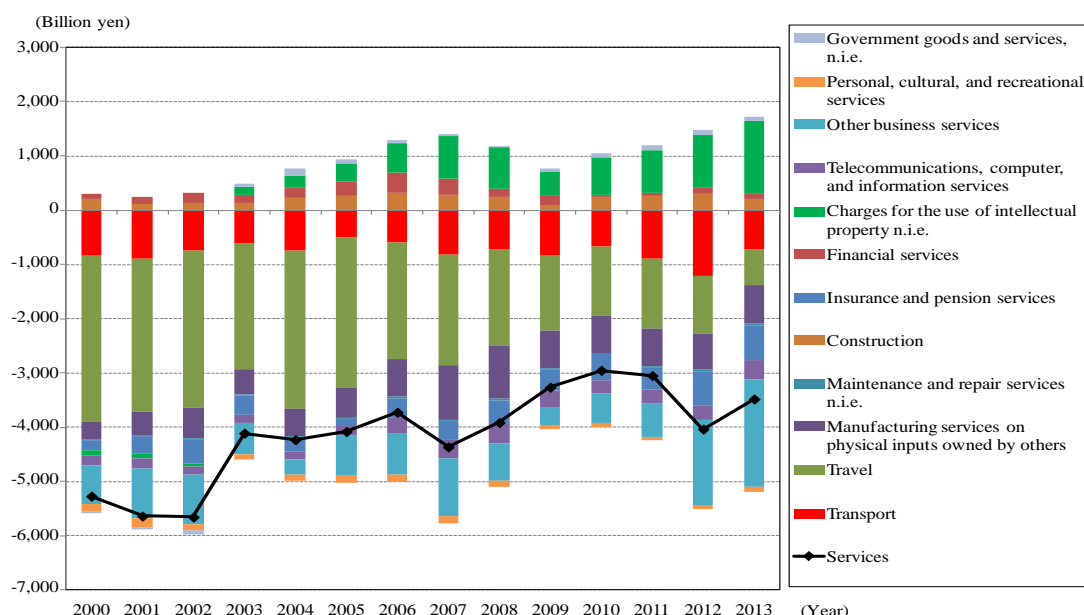
Section 4 Services account balance trend in Japan

While the services account has continued to register a deficit, the deficit has been shrinking in recent years. The services account balance improved by appropriately 1.5 trillion yen between 2000 and 2013, with the deficit shrinking from approximately 5 trillion yen 2000 to approximately 3.5 trillion yen. The balance relating to travel and charges for the use of intellectual property n.i.e. has made significant contributions to the shrinking of the deficit (Figure I-2-4-1).

The balance relating to travel¹⁹ has been improving year after year due to a decline in payments made abroad by Japanese tourists and an increase in receipts resulting from growth in the number of foreign visitors to Japan. The balance relating to travel registered a deficit of approximately 3 trillion yen in 2000, but improved for nine consecutive years through 2013, when the deficit came to 688.2 billion yen (Figure I-2-4-2).

The balance relating to charges for the use of intellectual property n.i.e.²⁰, which registered a deficit of 83.8 billion yen in 2000, changed to the plus column in 2003 with a surplus of 1,334.8 billion yen as of 2013, the largest surplus in the services account. Behind the turnaround there is a near-lack of growth in payments of charges for the use of industrial property n.i.e. to other countries since 2000 and a significant increase in receipts of charges for the use of industrial property n.i.e. and charges for the use of copyrights n.i.e. from abroad (Figure I-2-4-3).

Figure I-2-4-1 Trends in services account balance (2000-2013)

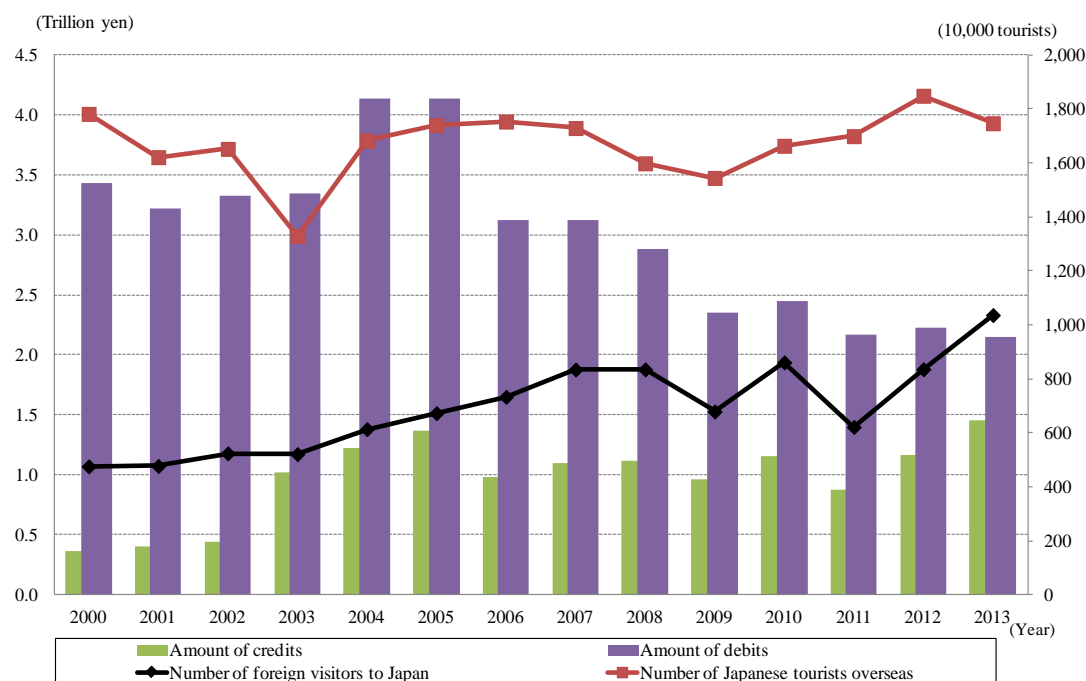


Source: Balance of Payments (Ministry of Finance).

¹⁹ Includes lodging expenses, meal expenses, entertainment expenses, traffic expenses, and souvenir expenses, etc.

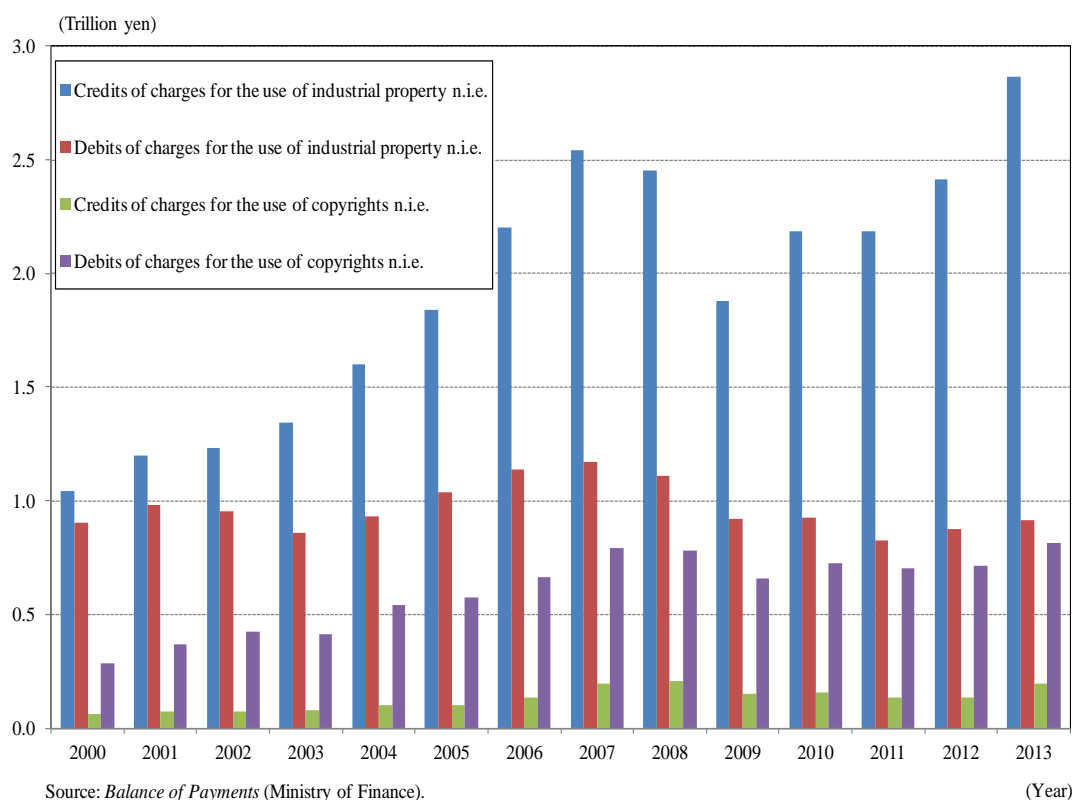
²⁰ Includes usage fees relating to property rights that arise from research and development and marketing activities, fees for copying and distribution of copyrighted products, fees for showing and broadcasting copyrighted works, etc.

Figure I-2-4-2 Trends in balance relating to travel, the number of foreign visitors to Japan, and the number of Japanese tourists overseas (2000-2013)



Source: Balance of Payment (Ministry of Finance), HONICHI GAIKYAKU NO DOKO (trends in the number of foreign visitors to Japan) (Japan National Tourism Organization)

Figure I-2-4-3 Trends in charges for the use of industrial property n.i.e. and changes for the use of copyrights n.i.e. (credits and debits) (2000-2013)



Source: Balance of Payments (Ministry of Finance).