

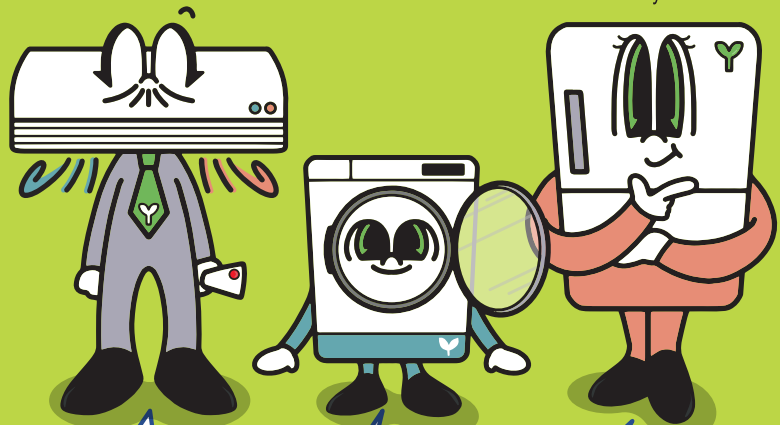


# Do you know how to dispose of home appliances?

~ How to Recycle Appliances Properly ~

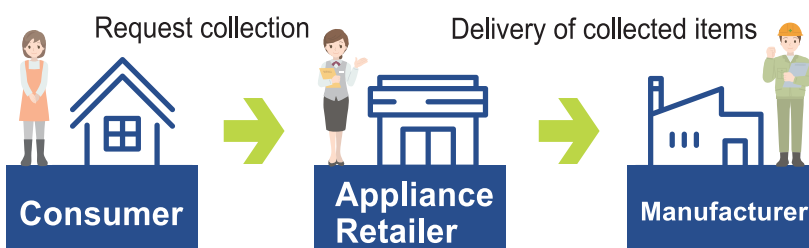
TVs	Air conditioners
Washing machines	Refrigerators

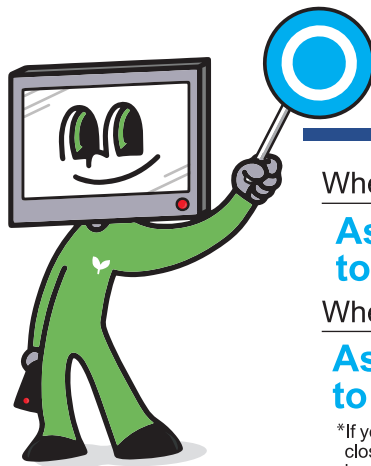
\*Freezers and clothes dryers also included



**These are not oversized garbage!**

When these **four types of appliances** are no longer needed, new life is given to the **useful resources** if they are **collected by an appliance retailer** and **recycled by the manufacturer**.





# Correct Disposal

When replacing with a new product:

**Ask the store where you bought the new product to collect it.**

When disposing without buying a replacement:

**Ask the store where you bought the product to collect it.**

\*If you do not remember where you bought it or if the store is far away, please contact an appliance retailer close to you, who may be able to collect it. Alternatively, dispose of it according to the method specified by your local government.

**You must pay the disposal fees.**

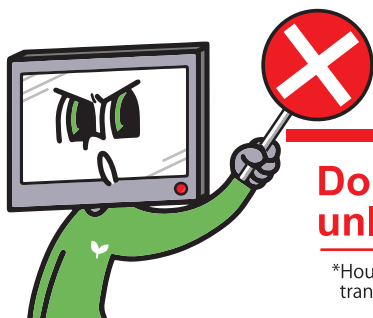
**Collection and transport fee**

\*Varies by retailer.



**Recycling fee**

\*Varies depending on the item, manufacturer, and size.



# Incorrect Disposal

**Do not hand over appliances to unlicensed collectors.\***

\*Household waste can only be collected by companies that have a general waste collection and transportation business license under the Waste Disposal Act, or those contracted by a municipality.

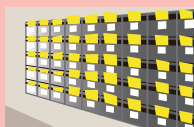
**Beware of these types of companies!**



Driving around the street with a loudspeaker



Collecting in a vacant lot



Distributing flyers to mailboxes



Advertising on the Internet



**In many cases, this leads to receiving a large invoice from the unlicensed collection company!**



## When appliances are disposed of correctly

Collected appliances are transported to a recycling plant where they are shredded, sorted into types of metal (iron, copper, aluminum, etc.) and plastic, and reborn as recycled resources.



## When appliances are disposed of incorrectly

The unwanted appliances may be illegally dumped or destroyed without taking environmental measures, resulting in the release of toxic substances such as CFCs and lead into the environment.



**Visit here** for more details.   
Association for Electric Home Appliances



Select a home appliance disposal method in 3 seconds \*Available in Japanese only