

Theme

# Designing Future Society for Our Lives

Sub Themes

- How to Lead a Healthy Life in a Diverse Manner
- Sustainable Socioeconomic Systems

Venue : Yumeshima Island, Osaka, Kansai, Japan

Schedule : May 3 - November 3, 2025

Projected Visitors : 28 million

The EXPO 2025 Japan Headquarters, Ministry of Economy, Trade and Industry  
[expo2025-osaka-japan@meti.go.jp](mailto:expo2025-osaka-japan@meti.go.jp)

2025 Japan World Expo Committee  
<http://www.expo2025-osaka-japan.jp/en/>

# EXPO 2025 OSAKA, KANSAI, JAPAN



Inspired by the emoji ideograms originating in Japan,  
the logo symbolises the concept that happy and smiling  
people are coming together from around the world and  
connecting with each other.



## Theme

# Designing Future Society for Our Lives

Considering today's global challenges such as economic inequality and social acceptance of breakthrough technologies, our theme will call on each and every individual to think about their own aspirations and empower them to realise their full potential. This will push forward the worldwide effort to create a shared vision of a sustainable society that embraces all such aspirations.

The theme will be realised and highlighted through two interconnected subthemes.

- How to Lead a Healthy Life in a Diverse Manner
- Sustainable Socioeconomic Systems



## EXPO for SDGs

The world faces a number of social issues.

The United Nations set the Sustainable Development Goals (SDGs) to address poverty, famine, health problems, and welfare, among other pressing issues.

What we need is a laboratory for gathering the knowledge of the world, and solving these issues through trial and error. EXPO 2025 OSAKA aims to be this laboratory.

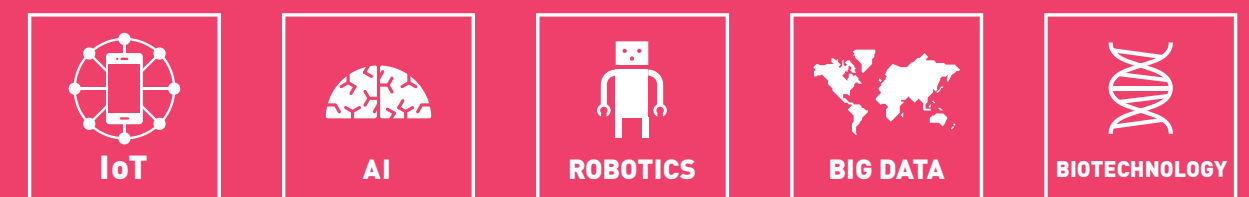
### The United Nations' Sustainable Development Goals



## The KEY is SOCIETY 5.0

Society 5.0 is Japan's vision for the next stage of human societal development after the four major stages; 1) hunter-gather, 2) agricultural, 3) industrial, and 4) information.

This initiative looks to tackle various global issues in areas including health, agriculture, and environment, by utilising technological breakthroughs such as the Internet of Things (IoT), Artificial Intelligence (AI), Robotics, Big Data, Biotechnology, and others.



## Expo Concept

# People's Living Lab

The People's Living Lab is a unique concept that will realise the full participation of all 8 billion people in the Expo 2025. It will enable everyone on Earth to take part in this unprecedented experiment.

## Co-Creation with all Countries

We need to work together to achieve the SDGs.

Japan is already taking action to achieve these goals, using the latest technology and sharing progress with various countries throughout the world.

EXPO 2025 OSAKA will continue on this path of co-creation in the 7 years leading up to the Expo.



## Venue Concept

# Envisioning Future Society

The venue plan reflects our vision of a future society through its key concepts of decentralisation and dispersion. Randomly placed pavilions represent individual citizens across the globe, making the Expo reflective of a future society that will be created by all people on this planet.



Yumeshima Island (Dream Island in Japanese) is a man-made island that will host the Expo and help realise the concept of EXPO 2025 OSAKA.



The *Khus*, major plazas within the Expo, will be the highlights of interaction and co-creation.



The layout of pavilions and site configuration highlights the diversity and uniqueness of the EXPO 2025 OSAKA venue concept.

# OSAKA, KANSAI

## Why OSAKA, KANSAI

Kansai, with Osaka as its hub, is a region with a daring spirit to challenge, and a rich culture that blends the traditional with the modern. The city has born many unique ideas and inventions, like instant noodles, karaoke, and conveyor-belt sushi, which benefit the daily lives of many.



The first ever interconnected skyscraper, Umeda Sky Building embodies Osaka's challenger spirit.

## Technology

The Kansai region is home to a high concentration of world-class biomedical clusters comprised of numerous research institutes and corporations as well as a hub for various types of advanced technologies.



Cutting-edge humanoid climbing robots, co-developed by several Kansai enterprises, and exhibited at the EXPO 2010 SHANGHAI.

## Access

The Kansai region is serviced by three world-class airports and two large seaports. Kansai International Airport offers over 1,200 international flights a week. Kansai is also connected to the rest of Japan through superhighways that stretch across the country, and world-famous bullet trains (Shinkansen).



Evening at Kansai International Airport

## History and Culture

For more than 1,600 years, the Kansai region, was home to Japan's capital. Astoundingly, half of Japan's National Treasures and 5 UNESCO World Heritage Sites can be found in the Kansai region.



Bunraku: Traditional Japanese puppet theater that expresses the most delicate of emotions, and has been recognised as a UNESCO Intangible Cultural Heritage.

## Easy to Reach and Unique Sites in Kansai



## Cultural Delights



Awa Odori Festival



Washoku (Japanese Cuisine)



Gion Matsuri Festival



Sado (Japanese tea ceremony)



# EXPLORE OSAKA CITY



<http://expo2025-osaka-japan-vr.jp/current>



## 1 Osaka-jō Castle

With over 400 years of history, Osaka Castle is a beloved symbol of the city. Locals and visitors alike are drawn to the contrast formed by the traditional castle framed against modern buildings.



## 2 A Thriving Shopping Arcade

Welcoming guests from all over the world with warmth and vitality is Osaka's Shopping Arcade. Various cultural delicacies are available at reasonable prices.



## 3 Ever-Improving City

Osaka flourished through its history of being a merchant hub. Many international and local enterprises are located in Osaka, and it is said "there is nothing that cannot be made in Osaka."



## 4 Aqua Metropolis

With many rivers running throughout the city, and supported by numerous forms of water transport, Osaka is also known as the Aqua Metropolis. Nakanoshima Island is a beautiful island right in the heart of Osaka.



## 5 Kyoto

A city that has been at the heart of Japanese politics and culture for generations. Having the deepest impact on Japanese culture, Kyoto attracts enthusiasts from all over the world.



## 6 Nara

Bordering Kyoto, Nara has a long history of being the centre of politics and culture of Japan. To this day, Nara continues to offer the chance to enjoy the history of Japan's culture.



# EXPLORE EXPO 2025 OSAKA, KANSAI



<http://expo2025-osaka-japan-vr.jp/future>



## 1 Overall View of the Site

Yumeshima, an artificial island surrounded by the sea, offers beautiful scenery of the Seto Inland Sea to visitors.



## 2 Khu

Khu plazas at Main Street act as major gathering spots.



## 3 Canal-lined Streets

Speckled with benches, rest facilities, food stalls, and trees, canal-lined streets will provide pedestrians with a comfortable place for leisurely walks and rest.



## 4 Night Shows

Night-time attractions integrating the environment into the performance, visitors will be able to enjoy water spectacles, light-art performances and others in the western and southern water areas.

