





METI Nuclear Energy Subcommittee

Working Group on Voluntary Efforts and
Continuous Improvement of Nuclear
Safety, Nuclear Technology and Human
Resources

Peter Prozesky – Chief Executive
24 November 2016

WANO and Nuclear Safety



Agenda:

- ☐ WANO Mission
- ☐ History, structure and aspirations
- ☐ WANO and International Nuclear Safety
- ☐ Self regulation - Peer Reviews and Operating Experience
- ☐ WANO and Japanese Industry
- ☐ Conclusions

WANO Mission



To maximise the safety and reliability of nuclear power plants worldwide by working together to assess, benchmark and improve performance through mutual support, exchange of information and emulation of best practice.

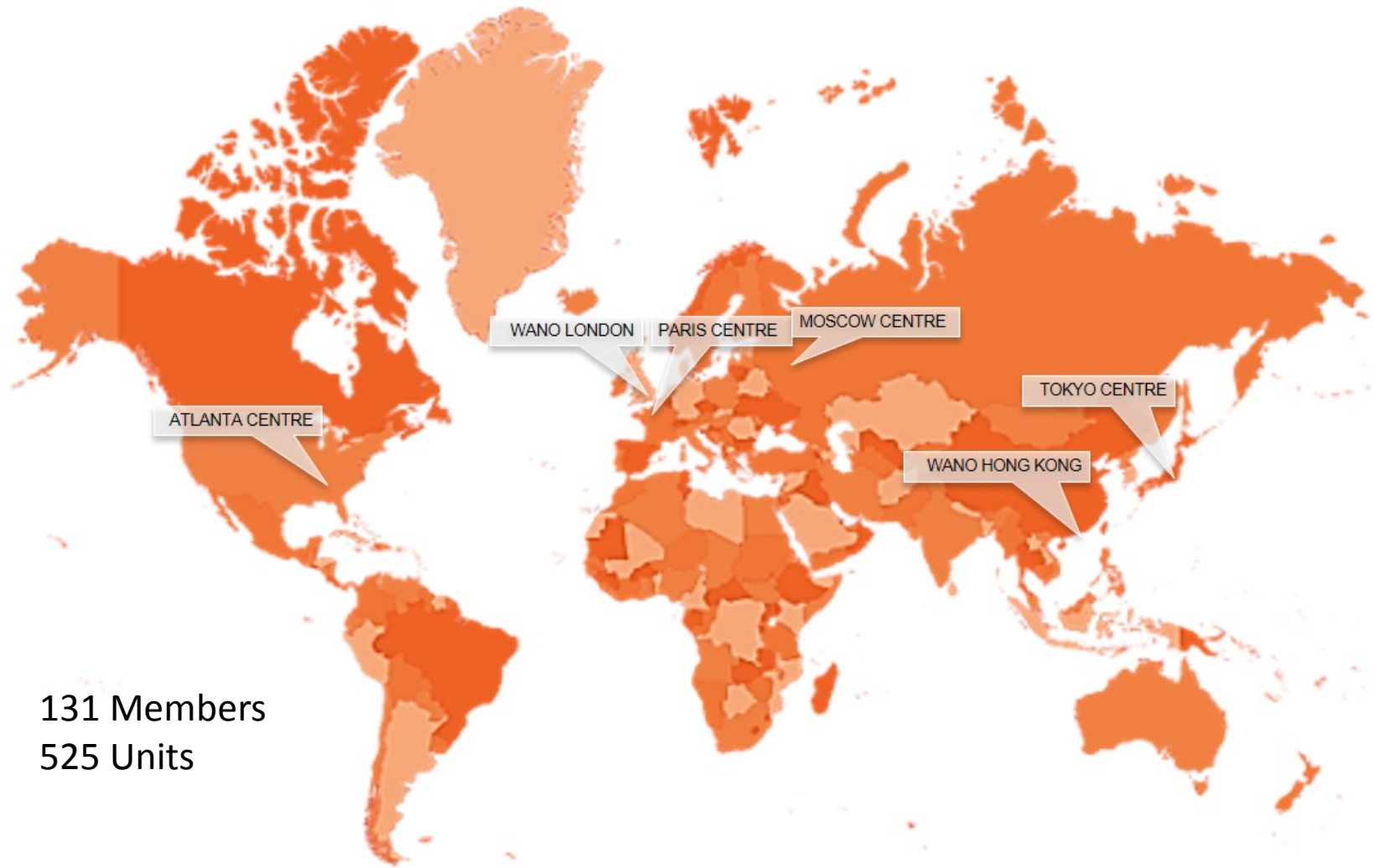
WANO Milestones



- ❑ 1979: Three Mile Island accident
- ❑ 1986: Chernobyl accident
- ❑ 1989: WANO established
- ❑ 1992: First WANO peer review
- ❑ 2000: Operating Experience Central Team established
- ❑ 2011: Fukushima incident – lessons learned
- ❑ 2014: WANO 25th anniversary

**Every civilian nuclear power station in the world
is subject to WANO oversight**

An international organisation

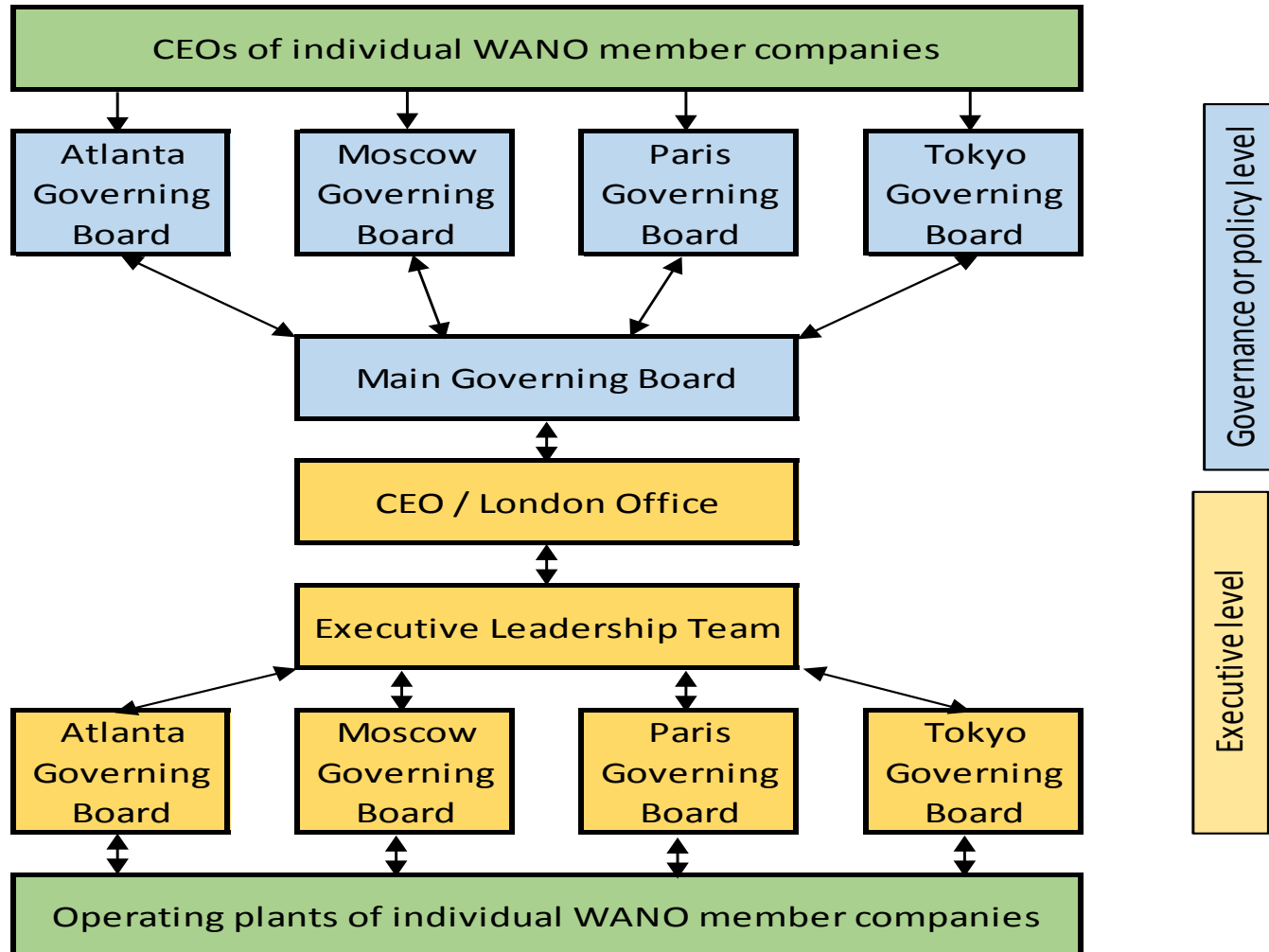


131 Members
525 Units

WANO Governance



WANO Governance and Executive structures



Delivering Nuclear Safety



- ❑ WANO's core programmes
 - ❑ **Peer Reviews**
 - ❑ **Operating Experience**
 - ❑ **Technical Support and Exchange**
 - ❑ **Training & Development**
 - ❑ **Corporate Communications**



WANO's approach & regulation



- ❑ WANO's approach of self-regulation is in addition to the role of a state regulator
- ❑ Regulators set out minimum expected standards
- ❑ WANO seeks constant improvement and continuously refines, so standards exceed the baseline set by a regulator
- ❑ WANO aims at excellence: to succeed, WANO depends on executive level engagement, shared values, responsiveness and corporate participation

WANO and Japanese Industry



- ❑ WANO post-Fukushima results and actions
 - ❑ How WANO has changed
 - ❑ How the Regional Centre in Tokyo has implemented the post-Fukushima Commission findings
- ❑ How WANO integrates with JANSI
- ❑ Evaluation of Japanese utilities and JANSI



Conclusions



- ❑ Over 27 years, WANO has developed and adapted
- ❑ We aim for 'One WANO', ensuring a consistent approach - while learning lessons and evolving
- ❑ WANO monitors, reviews and acts to drive our members, the industry, to excellence
- ❑ WANO has confidence in its approach of self-regulation but is not complacent and is open to innovations
- ❑ WANO understands the boundaries – it does not duplicate work carried out by nation state regulators or by organisations, such as IAEA

Thank you for listening

For more information please visit
www.wano.info