

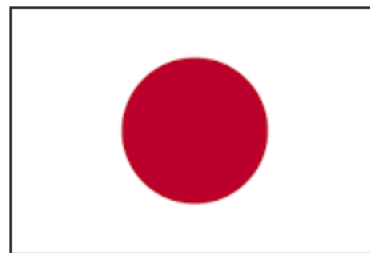
# SBP

The promise of good biomass

## Demonstrating compliance with Japanese requirements

Carsten Huljus, CEO

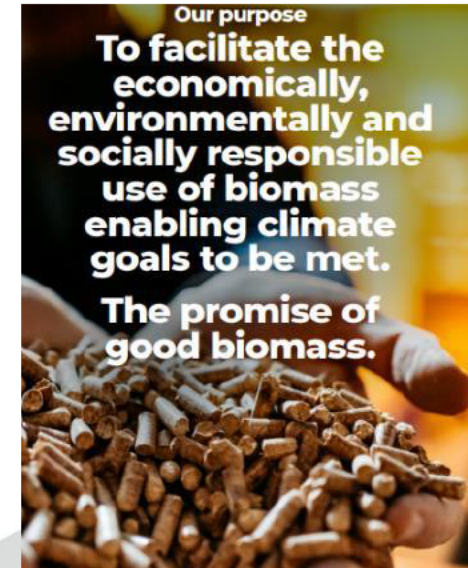
November 2022



# Sustainable Biomass Program

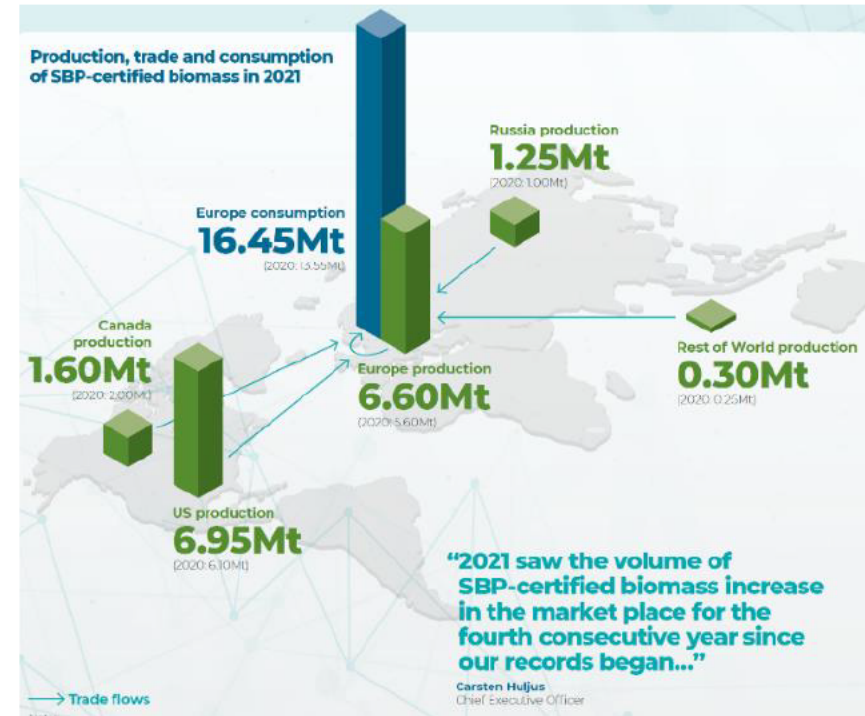


- **SBP is a non-profit, independent and multi stakeholder certification scheme**
- **Specifically developed for woody biomass used in heat and power production**
- **Heat and power producers (End-users) use SBP certification to demonstrate compliance with national legality and sustainability requirements for woody biomass**
- **Biomass Producers and Traders use SBP certification to comply with purchasing policies of End-users**
- **Independent auditing :**





- Ca. 30% of the worldwide pellet production in
- Ca. 82% EU industrial pellet market
- Continuous engagement with new producers
  - 241 Certificate Holders
  - 33 countries
  - 177 biomass producers



# Leading in Biomass Certification

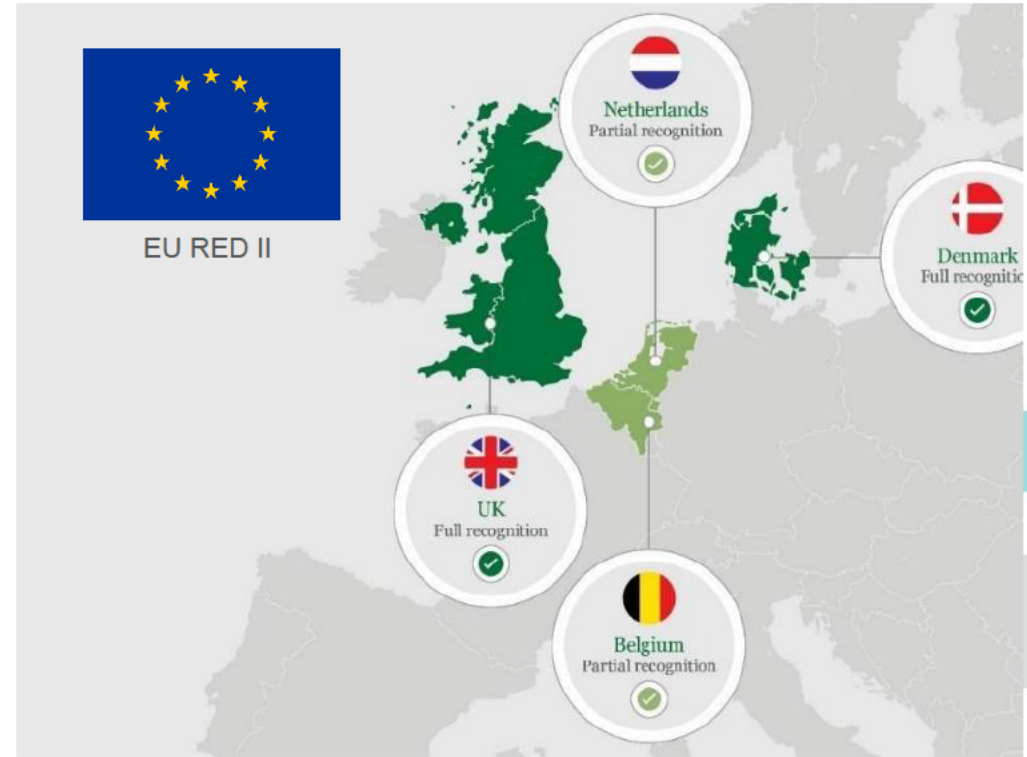


## A complex business environment

- No global agreed set of sustainability criteria for wood products / wood biomass / biomass
- Different regulatory and private requirements RED, SDE+, FSC and PEFC
- Multiple audits, limits fungibility and trade

## Need for a Meta-standard

- Recognised by relevant regulators in Europe
- Replaces multiple supplier audits
- Enables international trade
- Complementary to  Forest Stewardship Council®   SUSTAINABLE FORESTRY INITIATIVE
- Collects and transfers energy data - enabling calculation of GHG emissions



# SBP is now officially EU Recognised



- **Commission decision published on 9<sup>th</sup> of September 2022**
- **Certificate Holders must take action to comply with SBP's specific REDII requirements in order to be REDII-compliant**
- **Recognition of our scheme does not mean biomass carrying an SBP claim is automatically REDII-compliant**



Brussels, 26.9.2022  
C(2022) 6713 final

**COMMISSION IMPLEMENTING DECISION (EU) .../...**

**of 26.9.2022**

**on the recognition of the Sustainable Biomass Program voluntary scheme for demonstrating compliance with the requirements of Directive (EU) 2018/2001 for biofuels, bioliquids, biomass fuels, renewable liquid and gaseous fuels of non-biological origin and recycled carbon fuels**

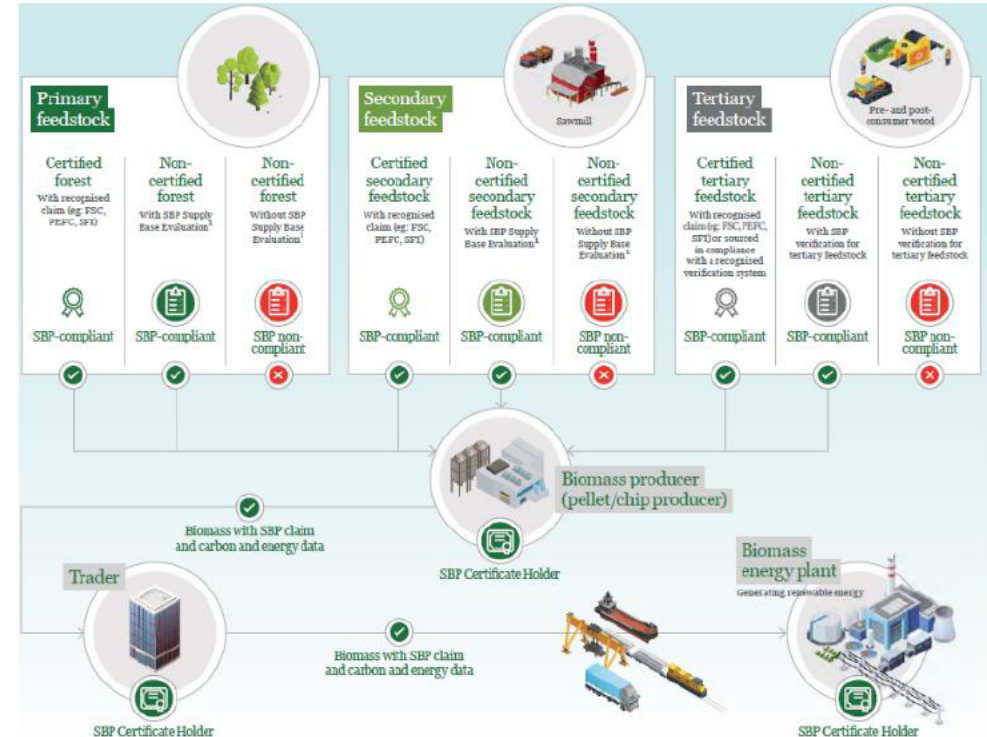
(Text with EEA relevance)



# Certification System



- **There are three types of Certificate Holder**
  - Biomass Producer (BP)
  - Trader
  - End-user
- **Each step of the supply chain must be certified if the biomass produced and sold is to carry an SBP claim**
- **BPs undertake a Supply Base Evaluation (SBE) of feedstock sources**
- **BPs determine and mitigate risks of using unsustainable feedstock**
- **Certified volumes and energy data transferred through the SBP Data Transfer System (DTS)**



# Data Transfer System





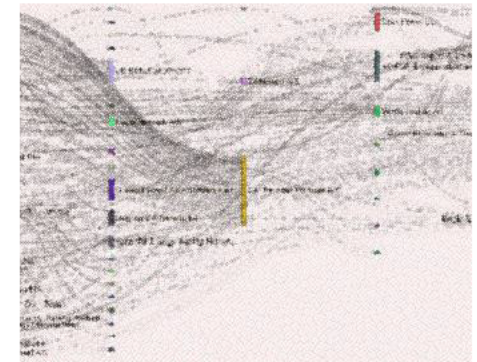
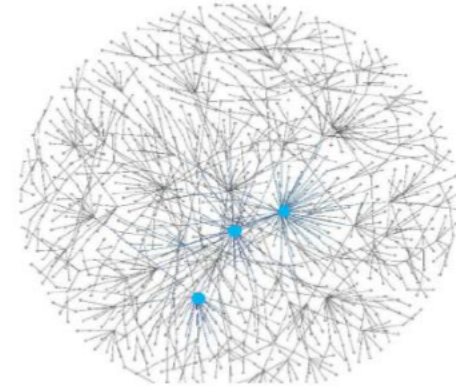
# Securing supply chain transactions

The DTS is a cloud-based digital tool for the transfer of SBP claims and production and sustainability data along the supply chain

- Accelerate data transfer between operators
- Reduces fraud in the supply chain
- Facebook/LinkedIn connect producers and buyers
- **Mandatory use / No trade of SBP certified material allowed outside of the DTS**
- 241 Certificate Holders => 2,000+ Business Relationships => Access to data
- Transaction summary with unique QR code
- Powered by

Welcome to  
**RADIX Tree**  
Your traceability tool

Combined with your business partner and the RADIX Tree  
platform for traceability and sustainability, you can ensure  
the integrity of your supply chain.





# Consistent and efficient data collection

User guide available [here](#)



Transaction

Template: Transaction

Transaction Name\*

Description

SBP certificate code (seller): SBP-00-03

SBP certificate code (buyer)

Invoice Date \*

Invoice Number \*

Invoiced Tonnage \*

Transaction Reference

Total Tonnage

Save Manage objects Share Back to Transactions

Creating transactions

Template \* Transaction Batch

Transaction Batch Name \*

Transaction batch description

SDI List Search Here

AA-code Search Here

Product Type \* Search Here

Production Batch ID \*

Tonnage \* t

SBP Claim Type \* Search Here

Batch Type Search Here

Submit

Reporting GHG data

Transaction

Add Object to

- + Create O
- DBSD v1.3 (ACTIVE)
- SBP SREG Inland & SeaTransport
- SBP SREG Inland Transport
- SBP Transaction documents
- Transaction Batch

Attaching GHG data

RADIX Tree

Transactions

Accepted Shared Actionable Spreadsheet

+ Add New Search Transactions...

	Name	Transaction Status	Sending Company	Created Date	Actions
<input type="checkbox"/>	Vessel Marlenham 30Apr2020 8c10ebae-3ffc-3e7e-9842-80ca14b220ff	Not shared	Biomass Producer 3	Apr 30, 2020 6:58:46 AM	<a href="#">Share</a> <a href="#">Info</a> <a href="#">Edit</a> <a href="#">Delete</a>

Sharing GHG data

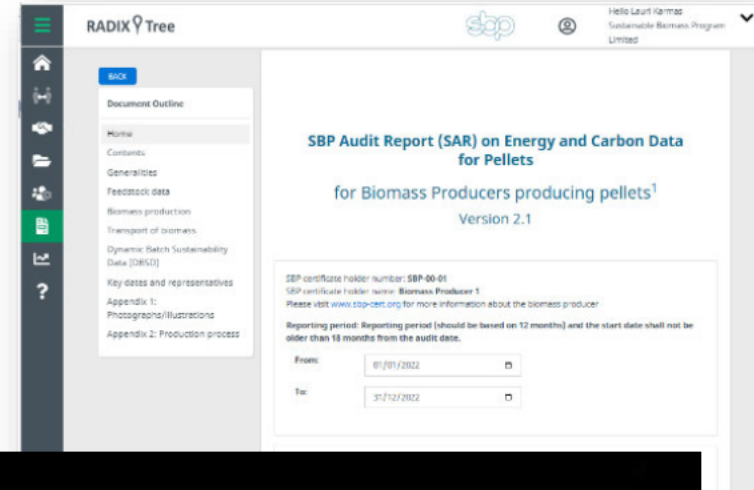
# Facilitating data collection to ease LC GHG calculation



# SBP does it for you



- **SBP Normative framework defined LCA required data (ID5E)**
- **Use of DTS facilitates aggregation and communication of data**
- **Data attached to each transaction**
- **Data field, reporting timelines, methodology are defined by SBP**
- **Data are verified and validated by Certification Bodies**
- **Relevant for international supply chains**
- **Utilities access all necessary data for their regulatory reporting**
- **Utilities generate data report to operate GHG saving calculation**



## Working with METI

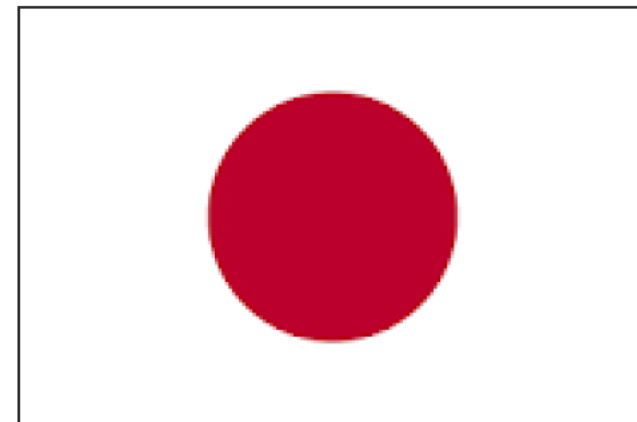




# SBP is ready



- EU RED II recognition officially achieved. Includes
- Accreditation requirements: CB holds valid ISO 17065 for CB assessing application of default values (or equivalent) and 14065 accreditation for CBs assessing calculated GHG values (or equivalent)
- Accreditation body to meet 17011
- SBP EU RED documentation available to all operators
- Training is ongoing
- Additional, specific requirements from METI can be included in a specific *Japan Bridging Document*
- Including GHG saving threshold, LCGHG rules set by FIT





Thank you !

Contact SBP:

[info@sbp-cert.org](mailto:info@sbp-cert.org)  
[www.sbp-cert.org](http://www.sbp-cert.org)

[chuljus@sbp-cert.org](mailto:chuljus@sbp-cert.org)