

平成29年1月の製造工業生産能力指数・稼働率指数の動向

Indices of Production Capacity and Operating Ratio for January, 2017

平成 22 年 = 100
Index, 2010 = 100

| 項目 | 季節調整済指数 | | 原指数 | | |
|-----------------------------|---------------------------|----------------|---------------------|--------------------|-------|
| | Seasonally Adjusted Index | | Original Index | | |
| | Percent Change | | Percent Change | | |
| | 前月比(%) | (前月における前月比(%)) | 前月比(%) | 前年同月比(%) | |
| | From Previous Month | | From Previous Month | From Previous Year | |
| 稼働率 Operating Ratio | 101.7 | 0.1 (0.6) | 96.1 | ▲ 3.1 | 3.3 |
| 生産能力 Production Capacity | | | 94.4 | ▲ 0.1 | ▲ 0.4 |

注：▲は低下を示す。

Note: ▲ indicates a negative figure.

- (1) 1月の製造工業稼働率指数は、101.7で前月比0.1%の上昇であった。
業種別にみると、電子部品・デバイス工業同2.2%、窯業・土石製品工業同2.4%、その他工業同1.9%等が上昇し、輸送機械工業同▲3.6%、はん用・生産用・業務用機械工業同▲1.6%、非鉄金属工業同▲3.6%等が低下した。
- (2) 1月の製造工業生産能力指数は、94.4で前月比▲0.1%の低下であった。
業種別にみると、電気機械工業同▲1.0%、窯業・土石製品工業同▲1.3%、はん用・生産用・業務用機械工業同▲0.3%等が低下し、電子部品・デバイス工業同0.3%、鉄鋼業同0.4%、その他工業同0.6%等が上昇した。

製造工業生産能力指数・稼働率指数の時系列表
 Historical Data for Indices of Production Capacity and Operating Ratio

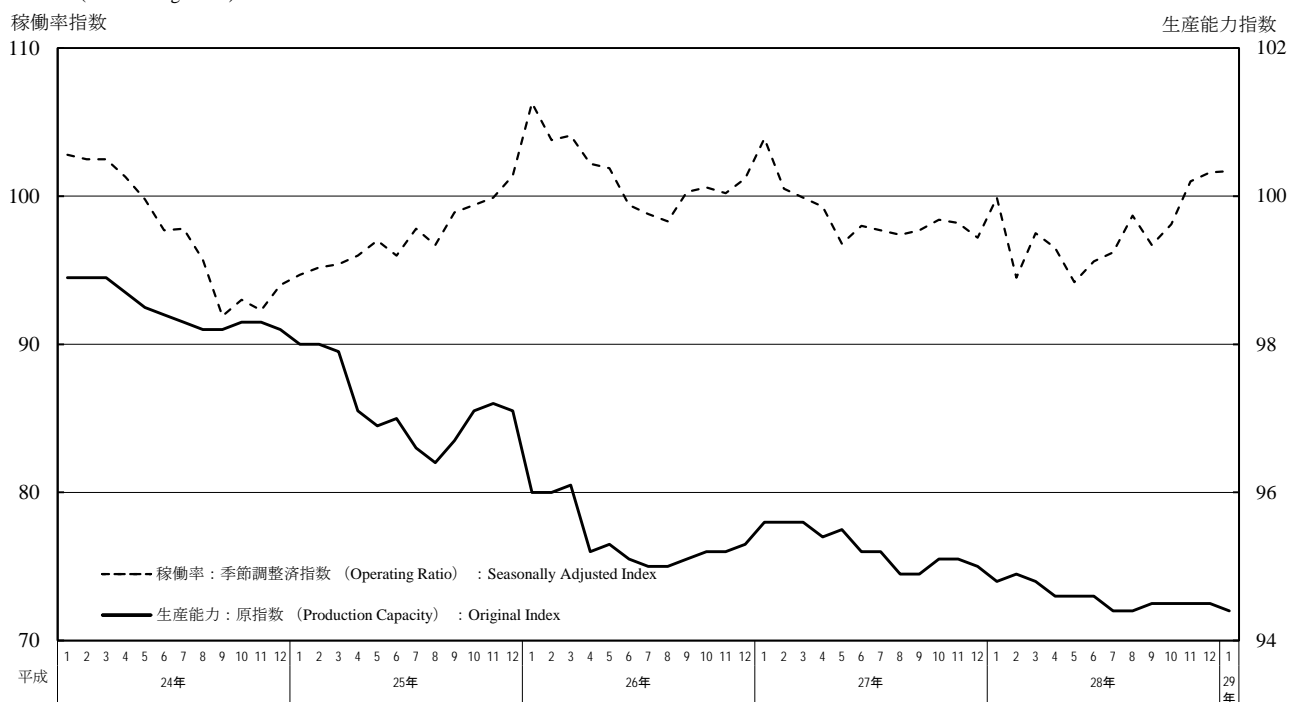
平成22年 = 100
 index.2010 = 100

| 年 月 | 稼働率 Operating Ratio | | | | 生産能力(末) Production Capacity | | | | Year and Month |
|------------|--|-------|---|-------|--|---|-------|------|----------------|
| | 季節調整済指数 Seasonally Adjusted Index | | 原指数 Original Index | | 原指数 Original Index | | | | |
| | 前月(期)比 %Change From Previous Month(Quarter) | | 前年 (同月期)比 %Change From Previous Year | | 前月(期)比 %Change From Previous Month(Quarter) | 前年 (同月期)比 %Change From Previous Year | | | |
| 平成 26 年 | | | 101.3 | 4.1 | 95.3 | | ▲ 1.9 | C.Y. | 2014 |
| 27 | | | 98.7 | ▲ 2.6 | 95.0 | | ▲ 0.3 | C.Y. | 2015 |
| 28 | | | 97.6 | ▲ 1.1 | 94.5 | | ▲ 0.5 | C.Y. | 2016 |
| 平成 25 年度 | | | 100.0 | 4.8 | 96.1 | | ▲ 1.8 | F.Y. | 2013 |
| 26 | | | 100.6 | 0.6 | 95.6 | | ▲ 0.5 | F.Y. | 2014 |
| 27 | | | 98.0 | ▲ 2.6 | 94.8 | | ▲ 0.8 | F.Y. | 2015 |
| 平成27 年 IV期 | 97.9 | 0.3 | 97.8 | ▲ 2.2 | 95.0 | 0.1 | ▲ 0.3 | Q4 | 2015 |
| 平成28 年 I 期 | 97.3 | ▲ 0.6 | 98.3 | ▲ 2.9 | 94.8 | ▲ 0.2 | ▲ 0.8 | Q1 | 2016 |
| II 期 | 95.4 | ▲ 2.0 | 94.6 | ▲ 2.7 | 94.6 | ▲ 0.2 | ▲ 0.6 | Q2 | |
| III 期 | 97.2 | 1.9 | 98.1 | ▲ 0.6 | 94.5 | ▲ 0.1 | ▲ 0.4 | Q3 | |
| IV 期 | 100.2 | 3.1 | 99.5 | 1.7 | 94.5 | 0.0 | ▲ 0.5 | Q4 | |
| 平成27 年 11月 | 98.2 | ▲ 0.2 | 97.2 | 0.0 | 95.1 | 0.0 | ▲ 0.1 | Nov. | 2015 |
| 12月 | 97.2 | ▲ 1.0 | 96.4 | ▲ 3.3 | 95.0 | ▲ 0.1 | ▲ 0.3 | Dec. | |
| 平成28 年 1月 | 99.9 | 2.8 | 93.0 | ▲ 5.3 | 94.8 | ▲ 0.2 | ▲ 0.8 | Jan. | 2016 |
| 2月 | 94.5 | ▲ 5.4 | 95.9 | ▲ 2.3 | 94.9 | 0.1 | ▲ 0.7 | Feb. | |
| 3月 | 97.5 | 3.2 | 106.1 | ▲ 0.9 | 94.8 | ▲ 0.1 | ▲ 0.8 | Mar. | |
| 4月 | 96.5 | ▲ 1.0 | 92.8 | ▲ 4.3 | 94.6 | ▲ 0.2 | ▲ 0.8 | Apr. | |
| 5月 | 94.2 | ▲ 2.4 | 91.0 | ▲ 1.2 | 94.6 | 0.0 | ▲ 0.9 | May | |
| 6月 | 95.6 | 1.5 | 100.0 | ▲ 2.4 | 94.6 | 0.0 | ▲ 0.6 | Jun. | |
| 7月 | 96.2 | 0.6 | 100.4 | ▲ 4.6 | 94.4 | ▲ 0.2 | ▲ 0.8 | Jul. | |
| 8月 | 98.7 | 2.6 | 93.2 | 4.5 | 94.4 | 0.0 | ▲ 0.5 | Aug. | |
| 9月 | 96.7 | ▲ 2.0 | 100.8 | ▲ 1.0 | 94.5 | 0.1 | ▲ 0.4 | Sep. | |
| 10月 | 98.1 | 1.4 | 97.8 | ▲ 1.9 | 94.5 | 0.0 | ▲ 0.6 | Oct. | |
| 11月 | 101.0 | 3.0 | 101.5 | 4.4 | 94.5 | 0.0 | ▲ 0.6 | Nov. | |
| 12月 | 101.6 | 0.6 | 99.2 | 2.9 | 94.5 | 0.0 | ▲ 0.5 | Dec. | |
| 平成29 年 1月 | 101.7 | 0.1 | 96.1 | 3.3 | 94.4 | ▲ 0.1 | ▲ 0.4 | Jan. | 2017 |

製造工業生産能力指数・稼働率指数の推移(グラフ)

Historical Data (Graph) for Indices of Production Capacity and Operating Ratio

(平成22年基準)
 (2010 average=100)



〈1. 鉄鋼業 ; Iron and steel〉

〈2. 非鉄金属工業 ; Non-ferrous metals〉

平成22年 =100
index.2010= 100

| | 稼働率 Operating Ratio | | | | 生産能力(末) Production Capacity | | | | 稼働率 Operating Ratio | | | | 生産能力(末) Production Capacity | | | | |
|----------|---|---|---|---|---|---|---|---|---|---|---|---|---|---|---|---|--|
| | 季節調整指数 Seasonally Adjusted Index | | 原指数 Original Index | | 原指数 Original Index | | 原指数 Original Index | | 季節調整指数 Seasonally Adjusted Index | | 原指数 Original Index | | 原指数 Original Index | | | | |
| | 前月(期)比 %Change From Previous Month (Quarter) | 前年 (同月期)比 %Change From Previous Year | 前月(期)比 %Change From Previous Month (Quarter) | 前年 (同月期)比 %Change From Previous Year | 前月(期)比 %Change From Previous Month (Quarter) | 前年 (同月期)比 %Change From Previous Year | 前月(期)比 %Change From Previous Month (Quarter) | 前年 (同月期)比 %Change From Previous Year | 前月(期)比 %Change From Previous Month (Quarter) | 前年 (同月期)比 %Change From Previous Year | 前月(期)比 %Change From Previous Month (Quarter) | 前年 (同月期)比 %Change From Previous Year | 前月(期)比 %Change From Previous Month (Quarter) | 前年 (同月期)比 %Change From Previous Year | | | |
| | | | | | | | | | | | | | | | 前月(期)比 %Change From Previous Month (Quarter) | 前年 (同月期)比 %Change From Previous Year | |
| 平成 26 年 | | | 98.9 | 1.2 | 98.9 | | ▲ 0.8 | | | 99.1 | 3.6 | 98.9 | | ▲ 0.5 | C.Y. 2014 | | |
| 27 年 | | | 94.5 | ▲ 4.4 | 97.5 | | ▲ 1.4 | | | 97.8 | ▲ 1.3 | 97.8 | | ▲ 1.1 | 2015 | | |
| 28 年 | | | 96.0 | 1.6 | 95.7 | | ▲ 1.8 | | | 99.7 | 1.9 | 97.0 | | ▲ 0.8 | 2016 | | |
| 平成 25 年度 | | | 98.5 | 2.9 | 99.6 | | ▲ 0.1 | | | 97.3 | 1.9 | 99.0 | | ▲ 1.3 | F.Y. 2013 | | |
| 26 年度 | | | 98.1 | ▲ 0.4 | 98.7 | | ▲ 0.9 | | | 99.0 | 1.7 | 99.0 | | 0.0 | 2014 | | |
| 27 年度 | | | 93.9 | ▲ 4.3 | 97.7 | | ▲ 1.0 | | | 98.1 | ▲ 0.9 | 97.8 | | ▲ 1.2 | 2015 | | |
| 平成27 年 | IV期 | 94.2 | 0.2 | 93.8 | ▲ 3.9 | 97.5 | ▲ 0.2 | ▲ 1.4 | 95.8 | ▲ 2.0 | 97.3 | ▲ 2.8 | 97.8 | ▲ 0.3 | ▲ 1.1 | Q4 2015 | |
| 平成28 年 | I期 | 92.6 | ▲ 1.7 | 93.9 | ▲ 2.5 | 97.7 | 0.2 | ▲ 1.0 | 99.2 | 3.5 | 99.4 | 1.0 | 97.8 | 0.0 | ▲ 1.2 | Q1 2016 | |
| | II期 | 96.0 | 3.7 | 95.4 | 2.1 | 95.6 | ▲ 2.1 | ▲ 2.1 | 98.1 | ▲ 1.1 | 98.4 | 0.4 | 98.0 | 0.2 | ▲ 0.4 | Q2 | |
| | III期 | 96.8 | 0.8 | 97.5 | 3.0 | 96.0 | 0.4 | ▲ 1.7 | 98.6 | 0.5 | 98.1 | 0.6 | 97.9 | ▲ 0.1 | ▲ 0.2 | Q3 | |
| | IV期 | 98.0 | 1.2 | 97.5 | 3.9 | 95.7 | ▲ 0.3 | ▲ 1.8 | 101.7 | 3.1 | 102.9 | 5.8 | 97.0 | ▲ 0.9 | ▲ 0.8 | Q4 | |
| 平成27 年 | 11月 | 94.4 | 0.9 | 93.6 | ▲ 3.5 | 97.6 | 0.0 | ▲ 1.3 | 96.6 | 1.3 | 97.6 | ▲ 0.4 | 97.8 | 0.0 | ▲ 1.2 | Nov. 2015 | |
| | 12月 | 94.6 | 0.2 | 92.6 | ▲ 2.0 | 97.5 | ▲ 0.1 | ▲ 1.4 | 95.4 | ▲ 1.2 | 94.3 | ▲ 3.2 | 97.8 | 0.0 | ▲ 1.1 | Dec. | |
| 平成28 年 | 1月 | 93.5 | ▲ 1.2 | 94.5 | ▲ 3.6 | 97.7 | 0.2 | ▲ 1.0 | 100.3 | 5.1 | 94.0 | ▲ 2.0 | 97.8 | 0.0 | ▲ 1.2 | Jan. 2016 | |
| | 2月 | 93.1 | ▲ 0.4 | 90.3 | 0.8 | 97.7 | 0.0 | ▲ 1.0 | 97.9 | ▲ 2.4 | 98.8 | 2.7 | 97.8 | 0.0 | ▲ 1.2 | Feb. | |
| | 3月 | 91.3 | ▲ 1.9 | 96.8 | ▲ 4.3 | 97.7 | 0.0 | ▲ 1.0 | 99.5 | 1.6 | 105.4 | 2.2 | 97.8 | 0.0 | ▲ 1.2 | Mar. | |
| | 4月 | 96.0 | 5.1 | 92.5 | 2.2 | 95.6 | ▲ 2.1 | ▲ 2.1 | 99.1 | ▲ 0.4 | 97.8 | ▲ 0.4 | 98.0 | 0.2 | ▲ 0.9 | Apr. | |
| | 5月 | 96.4 | 0.4 | 98.5 | 2.1 | 95.6 | 0.0 | ▲ 2.1 | 96.5 | ▲ 2.6 | 94.7 | 2.0 | 98.0 | 0.0 | ▲ 0.9 | May | |
| | 6月 | 95.6 | ▲ 0.8 | 95.1 | 2.1 | 95.6 | 0.0 | ▲ 2.1 | 98.7 | 2.3 | 102.7 | ▲ 0.2 | 98.0 | 0.0 | ▲ 0.4 | Jun. | |
| | 7月 | 97.4 | 1.9 | 98.2 | 2.5 | 96.0 | 0.4 | ▲ 1.7 | 97.2 | ▲ 1.5 | 100.7 | ▲ 3.5 | 98.0 | 0.0 | ▲ 0.3 | Jul. | |
| | 8月 | 97.8 | 0.4 | 98.8 | 4.1 | 96.0 | 0.0 | ▲ 1.7 | 99.0 | 1.9 | 91.0 | 4.6 | 98.0 | 0.0 | ▲ 0.3 | Aug. | |
| | 9月 | 95.2 | ▲ 2.7 | 95.4 | 2.3 | 96.0 | 0.0 | ▲ 1.7 | 99.5 | 0.5 | 102.6 | 1.4 | 97.9 | ▲ 0.1 | ▲ 0.2 | Sep. | |
| | 10月 | 98.5 | 3.5 | 99.9 | 4.9 | 95.7 | ▲ 0.3 | ▲ 1.9 | 99.4 | ▲ 0.1 | 103.0 | 2.9 | 97.1 | ▲ 0.8 | ▲ 0.7 | Oct. | |
| | 11月 | 96.7 | ▲ 1.8 | 96.1 | 2.7 | 95.7 | 0.0 | ▲ 1.9 | 102.3 | 2.9 | 104.6 | 7.2 | 97.0 | ▲ 0.1 | ▲ 0.8 | Nov. | |
| | 12月 | 98.7 | 2.1 | 96.4 | 4.1 | 95.7 | 0.0 | ▲ 1.8 | 103.4 | 1.1 | 101.0 | 7.1 | 97.0 | 0.0 | ▲ 0.8 | Dec. | |
| 平成29 年 | 1月 | 97.9 | ▲ 0.8 | 99.1 | 4.9 | 96.1 | 0.4 | ▲ 1.6 | 99.7 | ▲ 3.6 | 94.5 | 0.5 | 97.0 | 0.0 | ▲ 0.8 | Jan. 2017 | |

〈3. 金属製品工業 ; Fabricated metals〉

〈4. はん用・生産用・業務用機械工業 ;

General-purpose, production and business oriented machinery

| | 稼働率 Operating Ratio | | | | 生産能力(末) Production Capacity | | | | 稼働率 Operating Ratio | | | | 生産能力(末) Production Capacity | | | | |
|----------|---|---|---|---|---|---|---|---|---|---|---|---|---|---|---|---|--|
| | 季節調整指数 Seasonally Adjusted Index | | 原指数 Original Index | | 原指数 Original Index | | 原指数 Original Index | | 季節調整指数 Seasonally Adjusted Index | | 原指数 Original Index | | 原指数 Original Index | | | | |
| | 前月(期)比 %Change From Previous Month (Quarter) | 前年 (同月期)比 %Change From Previous Year | 前月(期)比 %Change From Previous Month (Quarter) | 前年 (同月期)比 %Change From Previous Year | 前月(期)比 %Change From Previous Month (Quarter) | 前年 (同月期)比 %Change From Previous Year | 前月(期)比 %Change From Previous Month (Quarter) | 前年 (同月期)比 %Change From Previous Year | 前月(期)比 %Change From Previous Month (Quarter) | 前年 (同月期)比 %Change From Previous Year | 前月(期)比 %Change From Previous Month (Quarter) | 前年 (同月期)比 %Change From Previous Year | 前月(期)比 %Change From Previous Month (Quarter) | 前年 (同月期)比 %Change From Previous Year | | | |
| | | | | | | | | | | | | | | | 前月(期)比 %Change From Previous Month (Quarter) | 前年 (同月期)比 %Change From Previous Year | |
| 平成 26 年 | | | 104.0 | 4.3 | 93.2 | | ▲ 0.9 | | | 125.2 | 14.0 | 100.3 | | 1.4 | C.Y. 2014 | | |
| 27 年 | | | 108.1 | 3.9 | 93.8 | | 0.6 | | | 120.5 | ▲ 3.8 | 99.5 | | ▲ 0.8 | 2015 | | |
| 28 年 | | | 105.8 | ▲ 2.1 | 93.7 | | ▲ 0.1 | | | 111.9 | ▲ 7.1 | 99.4 | | ▲ 0.1 | 2016 | | |
| 平成 25 年度 | | | 101.7 | 3.1 | 94.4 | | ▲ 0.8 | | | 115.1 | 6.4 | 99.2 | | ▲ 2.9 | F.Y. 2013 | | |
| 26 年度 | | | 105.1 | 3.3 | 93.5 | | ▲ 1.0 | | | 126.0 | 9.5 | 102.2 | | 3.0 | 2014 | | |
| 27 年度 | | | 107.9 | 2.7 | 94.1 | | 0.6 | | | 117.2 | ▲ 7.0 | 99.8 | | ▲ 2.3 | 2015 | | |
| 平成27 年 | IV期 | 108.5 | 0.6 | 105.6 | 3.9 | 93.8 | 0.3 | 0.6 | 115.5 | ▲ 0.9 | 114.1 | ▲ 8.8 | 99.5 | ▲ 0.7 | ▲ 0.8 | Q4 2015 | |
| 平成28 年 | I期 | 107.1 | ▲ 1.3 | 105.1 | ▲ 0.5 | 94.1 | 0.3 | 0.6 | 112.5 | ▲ 2.6 | 114.1 | ▲ 10.2 | 99.8 | 0.3 | ▲ 2.3 | Q1 2016 | |
| | II期 | 105.4 | ▲ 1.6 | 107.9 | ▲ 1.0 | 94.1 | 0.0 | 0.6 | 110.7 | ▲ 1.6 | 109.2 | ▲ 10.0 | 99.4 | ▲ 0.4 | ▲ 2.5 | Q2 | |
| | III期 | 102.8 | ▲ 2.5 | 106.7 | ▲ 4.7 | 94.3 | 0.2 | 0.9 | 109.4 | ▲ 1.2 | 111.9 | ▲ 6.3 | 99.6 | 0.2 | ▲ 0.6 | Q3 | |
| | IV期 | 106.4 | 3.5 | 103.4 | ▲ 2.1 | 93.7 | ▲ 0.6 | ▲ 0.1 | 114.7 | 4.8 | 112.4 | ▲ 1.5 | 99.4 | ▲ 0.2 | ▲ 0.1 | Q4 | |
| 平成27 年 | 11月 | 109.2 | 1.1 | 106.2 | 6.2 | 93.7 | 0.0 | 0.4 | 115.2 | ▲ 0.9 | 111.3 | ▲ 6.4 | 99.7 | ▲ 0.5 | ▲ 0.4 | Nov. 2015 | |
| | 12月 | 108.2 | ▲ 0.9 | 102.7 | 3.8 | 93.8 | 0.1 | 0.6 | 115.0 | ▲ 0.2 | 113.1 | ▲ 8.9 | 99.5 | ▲ 0.2 | ▲ 0.8 | Dec. | |
| 平成28 年 | 1月 | 109.5 | 1.2 | 97.2 | 0.6 | 94.2 | 0.4 | 1.2 | 116.9 | 1.7 | 103.8 | ▲ 12.3 | 99.7 | 0.2 | ▲ 2.2 | Jan. 2016 | |
| | 2月 | 101.9 | ▲ 6.9 | 97.0 | ▲ 6.5 | 94.1 | ▲ 0.1 | 1.0 | 111.2 | ▲ 4.9 | 113.7 | ▲ 8.6 | 99.6 | ▲ 0.1 | ▲ 2.4 | Feb. | |
| | 3月 | 109.9 | 7.9 | 121.2 | 3.9 | 94.1 | 0.0 | 0.6 | 109.3 | ▲ 1.7 | 124.7 | ▲ 10.0 | 99.8 | 0.2 | ▲ 2.3 | Mar. | |
| | 4月 | 106.6 | ▲ 3.0 | 107.2 | ▲ 2.6 | 94.1 | 0.0 | 0.6 | 114.5 | 4.8 | 107.9 | ▲ 10.5 | 99.6 | ▲ 0.2 | ▲ 2.6 | Apr. | |
| | 5月 | 102.9 | ▲ 3.5 | 104.1 | ▲ 2.1 | 94.1 | 0.0 | 0.6 | 106.9 | ▲ 6.6 | 99.7 | ▲ 10.0 | 99.6 | 0.0 | ▲ 2.6 | May | |
| | 6月 | 106.7 | 3.7 | 112.4 | 1.6 | 94.1 | 0.0 | 0.6 | 110.8 | 3.6 | 119.9 | ▲ 9.7 | 99.4 | ▲ 0.2 | ▲ 2.5 | Jun. | |
| | 7月 | 104.7 | ▲ 1.9 | 111.6 | ▲ 4.6 | 94.1 | 0.0 | 0.6 | 108.2 | ▲ 2.3 | 111.8 | ▲ 14.3 | 99.4 | 0.0 | ▲ 2.8 | Jul. | |
| | 8月 | 102.9 | ▲ 1.7 | 102.1 | ▲ 1.1 | 94.2 | 0.1 | 0.7 | 109.6 | 1.3 | 104.5 | ▲ 2.6 | 99.4 | 0.0 | ▲ 0.9 | Aug. | |
| | 9月 | 100.9 | ▲ 1.9 | 106.3 | ▲ 8.3 | 94.3 | 0.1 | 0.9 | 110.3 | 0.6 | 119.5 | ▲ 0.7 | 99.6 | 0.2 | ▲ 0.6 | Sep. | |
| | 10月 | 105.5 | 4.6 | 104.6 | ▲ 3.1 | 93.9 | ▲ 0.4 | 0.2 | 112.2 | 1.7 | 111.2 | ▲ 5.7 | 99.7 | 0.1 | ▲ 0.5 | Oct. | |
| | 11月 | 109.8 | 4.1 | 107.7 | 1.4 | 93.7 | ▲ 0.2 | 0.0 | 116.4 | 3.7 | 115.2 | 3.5 | 99.4 | ▲ 0.3 | ▲ 0.3 | Nov. | |
| | 12月 | 103.9 | ▲ 5.4 | 97.8 | ▲ 4.8 | 93.7 | 0.0 | ▲ 0.1 | 115.5 | ▲ 0.8 | 110.9 | ▲ 1.9 | 99.4 | 0.0 | ▲ 0.1 | Dec. | |
| 平成29 年 | 1月 | 104.7 | 0.8 | 93.7 | ▲ 3.6 | 93.7 | 0.0 | ▲ 0.5 | 113.7 | ▲ 1.6 | 103.4 | ▲ 0.4 | 99.1 | ▲ 0.3 | ▲ 0.6 | Jan. 2017 | |

<5. 電子部品・デバイス工業 ; Electronic parts and devices>

<6. 電気機械工業 ; Electrical machinery>

| | 稼働率 Operating Ratio | | | | 生産能力(末) Production Capacity | | | | 稼働率 Operating Ratio | | | | 生産能力(末) Production Capacity | | | | |
|----------|---|---|---|---|---|---|---|---|---|---|---|---|---|---|-----------|-----------|--|
| | 季節調整指数 Seasonally Adjusted Index | | 原指数 Original Index | | 原指数 Original Index | | 原指数 Original Index | | 季節調整指数 Seasonally Adjusted Index | | 原指数 Original Index | | 原指数 Original Index | | | | |
| | 前月(期)比 %Change From Previous Month (Quarter) | 前年 (同月期)比 %Change From Previous Year | 前月(期)比 %Change From Previous Month (Quarter) | 前年 (同月期)比 %Change From Previous Year | 前月(期)比 %Change From Previous Month (Quarter) | 前年 (同月期)比 %Change From Previous Year | 前月(期)比 %Change From Previous Month (Quarter) | 前年 (同月期)比 %Change From Previous Year | 前月(期)比 %Change From Previous Month (Quarter) | 前年 (同月期)比 %Change From Previous Year | 前月(期)比 %Change From Previous Month (Quarter) | 前年 (同月期)比 %Change From Previous Year | 前月(期)比 %Change From Previous Month (Quarter) | 前年 (同月期)比 %Change From Previous Year | | | |
| | | | | | | | | | | | | | | | | | |
| 平成 26 年 | | | 96.5 | 8.8 | 101.2 | | ▲ 2.7 | | | 101.7 | 3.1 | 98.6 | | 1.5 | C.Y. 2014 | | |
| 27 年 | | | 96.5 | 0.0 | 103.3 | | 2.1 | | | 98.4 | ▲ 3.2 | 102.2 | | 3.7 | 2015 | | |
| 28 年 | | | 94.8 | ▲ 1.8 | 103.9 | | 0.6 | | | 101.6 | 3.3 | 103.1 | | 0.9 | 2016 | | |
| 平成 25 年度 | | | 90.4 | 5.5 | 104.0 | | 1.6 | | | 103.0 | 8.3 | 98.3 | | 0.9 | F.Y. 2013 | | |
| 26 年度 | | | 98.4 | 8.8 | 100.4 | | ▲ 3.5 | | | 98.5 | ▲ 4.4 | 101.5 | | 3.3 | 2014 | | |
| 27 年度 | | | 95.0 | ▲ 3.5 | 103.1 | | 2.7 | | | 100.0 | 1.5 | 102.4 | | 0.9 | 2015 | | |
| 平成27 年 | IV期 | 94.6 | ▲ 0.1 | 92.6 | ▲ 5.3 | 103.3 | 2.3 | 2.1 | 99.8 | 1.9 | 93.9 | 1.1 | 102.2 | 0.5 | 3.7 | Q4 2015 | |
| 平成28 年 | I 期 | 93.4 | ▲ 1.3 | 90.3 | ▲ 6.1 | 103.1 | ▲ 0.2 | 2.7 | 102.4 | 2.6 | 96.0 | 7.3 | 102.4 | 0.2 | 0.9 | Q1 2016 | |
| | II 期 | 91.2 | ▲ 2.4 | 92.6 | ▲ 5.1 | 102.9 | ▲ 0.2 | 2.1 | 102.0 | ▲ 0.4 | 117.6 | 3.3 | 102.5 | 0.1 | 0.8 | Q2 | |
| | III 期 | 94.2 | 3.3 | 98.9 | ▲ 0.6 | 103.0 | 0.1 | 2.0 | 101.8 | ▲ 0.2 | 100.0 | 4.0 | 102.6 | 0.1 | 0.9 | Q3 | |
| | IV 期 | 100.2 | 6.4 | 97.6 | 5.4 | 103.9 | 0.9 | 0.6 | 99.1 | ▲ 2.7 | 92.6 | ▲ 1.4 | 103.1 | 0.5 | 0.9 | Q4 | |
| 平成27 年 | 11月 | 95.4 | 1.2 | 93.3 | ▲ 3.2 | 103.4 | 0.2 | 2.5 | 99.8 | ▲ 1.3 | 93.2 | 4.0 | 102.2 | 0.1 | 3.7 | Nov. 2015 | |
| | 12月 | 94.2 | ▲ 1.3 | 90.2 | ▲ 6.4 | 103.3 | ▲ 0.1 | 2.1 | 98.4 | ▲ 1.4 | 94.5 | 1.8 | 102.2 | 0.0 | 3.7 | Dec. | |
| 平成28 年 | 1月 | 93.4 | ▲ 0.8 | 88.2 | ▲ 11.4 | 103.2 | ▲ 0.1 | 2.8 | 103.4 | 5.1 | 85.0 | ▲ 0.4 | 102.1 | ▲ 0.1 | 0.9 | Jan. 2016 | |
| | 2月 | 92.6 | ▲ 0.9 | 87.8 | ▲ 3.1 | 103.1 | ▲ 0.1 | 2.4 | 98.6 | ▲ 4.6 | 93.8 | 8.3 | 102.9 | 0.8 | 1.4 | Feb. | |
| | 3月 | 94.2 | 1.7 | 94.8 | ▲ 3.7 | 103.1 | 0.0 | 2.7 | 105.1 | 6.6 | 109.1 | 12.8 | 102.4 | ▲ 0.5 | 0.9 | Mar. | |
| | 4月 | 93.6 | ▲ 0.6 | 90.0 | ▲ 5.1 | 102.5 | ▲ 0.6 | 2.6 | 103.2 | ▲ 1.8 | 112.0 | 1.1 | 102.6 | 0.2 | 1.4 | Apr. | |
| | 5月 | 91.0 | ▲ 2.8 | 93.8 | ▲ 3.2 | 102.9 | 0.4 | 2.5 | 99.5 | ▲ 3.6 | 109.6 | 4.4 | 102.5 | ▲ 0.1 | 1.0 | May | |
| | 6月 | 89.1 | ▲ 2.1 | 94.0 | ▲ 6.9 | 102.9 | 0.0 | 2.1 | 103.2 | 3.7 | 131.3 | 4.5 | 102.5 | 0.0 | 0.8 | Jun. | |
| | 7月 | 92.9 | 4.3 | 97.1 | ▲ 3.9 | 102.5 | ▲ 0.4 | 1.5 | 105.7 | 2.4 | 123.4 | 4.8 | 102.5 | 0.0 | 0.8 | Jul. | |
| | 8月 | 99.0 | 6.6 | 102.0 | 7.7 | 102.6 | 0.1 | 1.5 | 104.8 | ▲ 0.9 | 90.4 | 12.4 | 102.5 | 0.0 | 0.8 | Aug. | |
| | 9月 | 90.7 | ▲ 8.4 | 97.5 | ▲ 5.1 | 103.0 | 0.4 | 2.0 | 94.8 | ▲ 9.5 | 86.2 | ▲ 4.9 | 102.6 | 0.1 | 0.9 | Sep. | |
| | 10月 | 97.9 | 7.9 | 96.7 | 2.7 | 103.6 | 0.6 | 0.4 | 94.7 | ▲ 0.1 | 86.0 | ▲ 8.4 | 103.1 | 0.5 | 1.0 | Oct. | |
| | 11月 | 101.0 | 3.2 | 99.9 | 7.1 | 103.5 | ▲ 0.1 | 0.1 | 99.3 | 4.9 | 94.8 | 1.7 | 103.1 | 0.0 | 0.9 | Nov. | |
| | 12月 | 101.6 | 0.6 | 96.2 | 6.7 | 103.9 | 0.4 | 0.6 | 103.2 | 3.9 | 97.0 | 2.6 | 103.1 | 0.0 | 0.9 | Dec. | |
| 平成29 年 | 1月 | 103.8 | 2.2 | 99.0 | 12.2 | 104.2 | 0.3 | 1.0 | 104.3 | 1.1 | 87.6 | 3.1 | 102.1 | ▲ 1.0 | 0.0 | Jan. 2017 | |

<7. 情報通信機械工業 ; Information and communication electronics equipment>

<8. 輸送機械工業 ; Transport equipment>

| | 稼働率 Operating Ratio | | | | 生産能力(末) Production Capacity | | | | 稼働率 Operating Ratio | | | | 生産能力(末) Production Capacity | | | | |
|----------|---|---|---|---|---|---|---|---|---|---|---|---|---|---|-----------|-----------|--|
| | 季節調整指数 Seasonally Adjusted Index | | 原指数 Original Index | | 原指数 Original Index | | 原指数 Original Index | | 季節調整指数 Seasonally Adjusted Index | | 原指数 Original Index | | 原指数 Original Index | | | | |
| | 前月(期)比 %Change From Previous Month (Quarter) | 前年 (同月期)比 %Change From Previous Year | 前月(期)比 %Change From Previous Month (Quarter) | 前年 (同月期)比 %Change From Previous Year | 前月(期)比 %Change From Previous Month (Quarter) | 前年 (同月期)比 %Change From Previous Year | 前月(期)比 %Change From Previous Month (Quarter) | 前年 (同月期)比 %Change From Previous Year | 前月(期)比 %Change From Previous Month (Quarter) | 前年 (同月期)比 %Change From Previous Year | 前月(期)比 %Change From Previous Month (Quarter) | 前年 (同月期)比 %Change From Previous Year | 前月(期)比 %Change From Previous Month (Quarter) | 前年 (同月期)比 %Change From Previous Year | | | |
| | | | | | | | | | | | | | | | | | |
| 平成 26 年 | | | 72.5 | ▲ 10.7 | 74.9 | | ▲ 4.7 | | | 105.8 | 6.1 | 95.8 | | ▲ 3.9 | C.Y. 2014 | | |
| 27 年 | | | 64.0 | ▲ 11.7 | 71.2 | | ▲ 4.9 | | | 99.9 | ▲ 5.6 | 96.3 | | 0.5 | 2015 | | |
| 28 年 | | | 65.5 | 2.3 | 70.0 | | ▲ 1.7 | | | 98.6 | ▲ 1.3 | 96.0 | | ▲ 0.3 | 2016 | | |
| 平成 25 年度 | | | 84.0 | 3.7 | 77.0 | | ▲ 4.8 | | | 103.8 | 5.6 | 95.6 | | ▲ 4.8 | F.Y. 2013 | | |
| 26 年度 | | | 67.9 | ▲ 19.2 | 73.2 | | ▲ 4.9 | | | 103.8 | 0.0 | 96.3 | | 0.7 | 2014 | | |
| 27 年度 | | | 63.7 | ▲ 6.2 | 70.5 | | ▲ 3.7 | | | 99.0 | ▲ 4.6 | 96.0 | | ▲ 0.3 | 2015 | | |
| 平成27 年 | IV期 | 61.3 | ▲ 4.2 | 61.0 | ▲ 7.9 | 71.2 | ▲ 0.6 | ▲ 4.9 | 100.3 | 3.0 | 100.8 | ▲ 0.6 | 96.3 | 0.1 | 0.5 | Q4 2015 | |
| 平成28 年 | I 期 | 65.1 | 6.2 | 71.0 | ▲ 2.1 | 70.5 | ▲ 1.0 | ▲ 3.7 | 97.8 | ▲ 2.5 | 102.6 | ▲ 3.7 | 96.0 | ▲ 0.3 | ▲ 0.3 | Q1 2016 | |
| | II 期 | 65.9 | 1.2 | 59.4 | 1.0 | 70.5 | 0.0 | ▲ 1.1 | 94.1 | ▲ 3.8 | 90.3 | ▲ 3.9 | 96.0 | 0.0 | ▲ 0.2 | Q2 | |
| | III 期 | 67.1 | 1.8 | 66.5 | 4.4 | 70.0 | ▲ 0.7 | ▲ 2.2 | 98.2 | 4.4 | 98.8 | 0.3 | 96.0 | 0.0 | ▲ 0.2 | Q3 | |
| | IV 期 | 65.6 | ▲ 2.2 | 64.9 | 6.4 | 70.0 | 0.0 | ▲ 1.7 | 103.3 | 5.2 | 102.8 | 2.0 | 96.0 | 0.0 | ▲ 0.3 | Q4 | |
| 平成27 年 | 11月 | 61.7 | 0.3 | 57.9 | ▲ 4.1 | 71.6 | 0.0 | ▲ 4.4 | 100.4 | ▲ 1.4 | 101.1 | 3.9 | 96.3 | 0.0 | 0.5 | Nov. 2015 | |
| | 12月 | 60.8 | ▲ 1.5 | 64.5 | ▲ 10.7 | 71.2 | ▲ 0.6 | ▲ 4.9 | 98.6 | ▲ 1.8 | 96.5 | ▲ 3.2 | 96.3 | 0.0 | 0.5 | Dec. | |
| 平成28 年 | 1月 | 65.7 | 8.1 | 60.8 | ▲ 4.3 | 70.0 | ▲ 1.7 | ▲ 4.2 | 102.0 | 3.4 | 94.3 | ▲ 6.0 | 96.0 | ▲ 0.3 | ▲ 0.3 | Jan. 2016 | |
| | 2月 | 64.7 | ▲ 1.5 | 67.1 | ▲ 1.2 | 70.1 | 0.1 | ▲ 4.2 | 91.6 | ▲ 10.2 | 99.2 | ▲ 6.4 | 96.0 | 0.0 | ▲ 0.3 | Feb. | |
| | 3月 | 65.0 | 0.5 | 85.2 | ▲ 1.2 | 70.5 | 0.6 | ▲ 3.7 | 99.7 | 8.8 | 114.3 | 1.0 | 96.0 | 0.0 | ▲ 0.3 | Mar. | |
| | 4月 | 65.9 | 1.4 | 57.1 | 1.8 | 70.5 | 0.0 | ▲ 3.7 | 92.4 | ▲ 7.3 | 83.1 | ▲ 10.5 | 96.0 | 0.0 | ▲ 0.3 | Apr. | |
| | 5月 | 67.1 | 1.8 | 55.1 | 6.8 | 70.5 | 0.0 | ▲ 3.7 | 94.3 | 2.1 | 84.7 | 1.0 | 96.0 | 0.0 | ▲ 0.2 | May | |
| | 6月 | 64.8 | ▲ 3.4 | 66.1 | ▲ 3.9 | 70.5 | 0.0 | ▲ 1.1 | 95.5 | 1.3 | 103.2 | ▲ 1.9 | 96.0 | 0.0 | ▲ 0.2 | Jun. | |
| | 7月 | 63.0 | ▲ 2.8 | 63.1 | ▲ 6.1 | 70.0 | ▲ 0.7 | ▲ 1.8 | 98.0 | 2.6 | 103.5 | ▲ 5.5 | 96.0 | 0.0 | ▲ 0.2 | Jul. | |
| | 8月 | 73.7 | 17.0 | 64.6 | 15.6 | 70.0 | 0.0 | ▲ 1.5 | 97.2 | ▲ 0.8 | 84.8 | 7.8 | 96.0 | 0.0 | ▲ 0.2 | Aug. | |
| | 9月 | 64.7 | ▲ 12.2 | 71.8 | 5.4 | 70.0 | 0.0 | ▲ 2.2 | 99.5 | 2.4 | 108.2 | 0.9 | 96.0 | 0.0 | ▲ 0.2 | Sep. | |
| | 10月 | 66.6 | 2.9 | 64.7 | 6.6 | 70.0 | 0.0 | ▲ 2.2 | 100.7 | 1.2 | 100.4 | ▲ 4.2 | 96.0 | 0.0 | ▲ 0.3 | Oct. | |
| | 11月 | 66.9 | 0.5 | 63.8 | 10.2 | 70.0 | 0.0 | ▲ 2.2 | 103.8 | 3.1 | 107.9 | 6.7 | 96.0 | 0.0 | ▲ 0.3 | Nov. | |
| | 12月 | 63.2 | ▲ 5.5 | 66.1 | 2.5 | 70.0 | 0.0 | ▲ 1.7 | 105.5 | 1.6 | 100.0 | 3.6 | 96.0 | 0.0 | ▲ 0.3 | Dec. | |
| 平成29 年 | 1月 | 63.5 | 0.5 | 59.7 | ▲ 1.8 | 70.1 | 0.1 | 0.1 | 101.7 | ▲ 3.6 | 97.1 | 3.0 | 96.0 | 0.0 | 0.0 | Jan. 2017 | |

<9. 窯業・土石製品工業 ; Ceramics, stone and clay products>

<10. 化学工業 ; Chemicals>

| | 稼働率 Operating Ratio | | | | 生産能力(末) Production Capacity | | | | 稼働率 Operating Ratio | | | | 生産能力(末) Production Capacity | | | | |
|------------|---|---|---|---|---|---|---|---|---|---|---|---|---|---|-----------|--|--|
| | 季節調整指数 Seasonally Adjusted Index | | 原指数 Original Index | | 原指数 Original Index | | 原指数 Original Index | | 季節調整指数 Seasonally Adjusted Index | | 原指数 Original Index | | 原指数 Original Index | | | | |
| | 前月(期)比 %Change From Previous Month (Quarter) | 前年 (同月期)比 %Change From Previous Year | 前月(期)比 %Change From Previous Month (Quarter) | 前年 (同月期)比 %Change From Previous Year | 前月(期)比 %Change From Previous Month (Quarter) | 前年 (同月期)比 %Change From Previous Year | 前月(期)比 %Change From Previous Month (Quarter) | 前年 (同月期)比 %Change From Previous Year | 前月(期)比 %Change From Previous Month (Quarter) | 前年 (同月期)比 %Change From Previous Year | 前月(期)比 %Change From Previous Month (Quarter) | 前年 (同月期)比 %Change From Previous Year | 前月(期)比 %Change From Previous Month (Quarter) | 前年 (同月期)比 %Change From Previous Year | | | |
| | | | | | | | | | | | | | | | | | |
| 平成 26 年 | | | 101.1 | 2.5 | 94.0 | | 0.1 | | | 91.8 | ▲ 3.1 | 96.6 | | ▲ 1.9 | C.Y. 2014 | | |
| 27 年 | | | 98.5 | ▲ 2.6 | 93.1 | | ▲ 1.0 | | | 95.7 | 4.2 | 94.7 | | ▲ 2.0 | 2015 | | |
| 28 年 | | | 99.0 | 0.5 | 92.5 | | ▲ 0.6 | | | 95.2 | ▲ 0.5 | 94.1 | | ▲ 0.6 | 2016 | | |
| 平成 25 年度 | | | 100.4 | 6.1 | 93.3 | | ▲ 2.5 | | | 95.3 | 3.1 | 98.4 | | 0.1 | F.Y. 2013 | | |
| 26 年度 | | | 100.6 | 0.2 | 93.7 | | 0.4 | | | 91.6 | ▲ 3.9 | 96.4 | | ▲ 2.0 | 2014 | | |
| 27 年度 | | | 98.4 | ▲ 2.2 | 93.0 | | ▲ 0.7 | | | 96.3 | 5.1 | 93.8 | | ▲ 2.7 | 2015 | | |
| 平成27 年 IV期 | 99.7 | 1.9 | 103.1 | 0.5 | 93.1 | 0.0 | ▲ 1.0 | 95.8 | ▲ 1.8 | 98.5 | 3.5 | 94.7 | ▲ 0.1 | ▲ 2.0 | Q4 2015 | | |
| 平成28 年 I期 | 97.9 | ▲ 1.8 | 96.9 | ▲ 0.4 | 93.0 | ▲ 0.1 | ▲ 0.7 | 95.2 | ▲ 0.6 | 96.9 | 2.5 | 93.8 | ▲ 1.0 | ▲ 2.7 | Q1 2016 | | |
| II期 | 96.6 | ▲ 1.3 | 94.6 | ▲ 0.5 | 93.0 | 0.0 | ▲ 1.0 | 93.2 | ▲ 2.1 | 90.6 | ▲ 1.6 | 94.2 | 0.4 | ▲ 1.5 | Q2 | | |
| III期 | 99.1 | 2.6 | 99.8 | 1.3 | 92.7 | ▲ 0.3 | ▲ 0.4 | 93.9 | 0.8 | 93.9 | ▲ 3.8 | 94.1 | ▲ 0.1 | ▲ 0.7 | Q3 | | |
| IV期 | 101.7 | 2.6 | 104.9 | 1.7 | 92.5 | ▲ 0.2 | ▲ 0.6 | 96.7 | 3.0 | 99.4 | 0.9 | 94.1 | 0.0 | ▲ 0.6 | Q4 | | |
| 平成27 年 11月 | 99.3 | ▲ 0.7 | 102.8 | ▲ 0.3 | 93.1 | ▲ 0.2 | ▲ 1.0 | 95.1 | ▲ 1.8 | 96.6 | 3.0 | 94.7 | ▲ 0.1 | ▲ 2.0 | Nov. 2015 | | |
| 12月 | 99.9 | 0.6 | 102.0 | ▲ 0.7 | 93.1 | 0.0 | ▲ 1.0 | 95.6 | 0.5 | 101.6 | 2.2 | 94.7 | 0.0 | ▲ 2.0 | Dec. | | |
| 平成28 年 1月 | 96.8 | ▲ 3.1 | 92.3 | ▲ 4.7 | 93.0 | ▲ 0.1 | ▲ 1.1 | 95.6 | 0.0 | 99.3 | 1.5 | 94.5 | ▲ 0.2 | ▲ 2.2 | Jan. 2016 | | |
| 2月 | 97.2 | 0.4 | 95.8 | 1.4 | 93.0 | 0.0 | ▲ 0.9 | 93.6 | ▲ 2.1 | 95.6 | 5.3 | 94.4 | ▲ 0.1 | ▲ 2.2 | Feb. | | |
| 3月 | 99.6 | 2.5 | 102.5 | 2.1 | 93.0 | 0.0 | ▲ 0.7 | 96.4 | 3.0 | 95.7 | 0.7 | 93.8 | ▲ 0.6 | ▲ 2.7 | Mar. | | |
| 4月 | 97.5 | ▲ 2.1 | 93.8 | ▲ 0.1 | 93.0 | 0.0 | ▲ 1.0 | 96.8 | 0.4 | 96.8 | 0.7 | 94.0 | 0.2 | ▲ 2.0 | Apr. | | |
| 5月 | 94.5 | ▲ 3.1 | 89.9 | ▲ 2.5 | 93.0 | 0.0 | ▲ 1.0 | 91.2 | ▲ 5.8 | 89.5 | ▲ 2.8 | 94.0 | 0.0 | ▲ 2.0 | May | | |
| 6月 | 97.7 | 3.4 | 100.1 | 0.8 | 93.0 | 0.0 | ▲ 1.0 | 91.6 | 0.4 | 85.5 | ▲ 3.0 | 94.2 | 0.2 | ▲ 1.5 | Jun. | | |
| 7月 | 99.3 | 1.6 | 103.3 | ▲ 0.6 | 92.8 | ▲ 0.2 | ▲ 0.4 | 91.1 | ▲ 0.5 | 91.7 | ▲ 6.3 | 94.2 | 0.0 | ▲ 0.6 | Jul. | | |
| 8月 | 98.8 | ▲ 0.5 | 94.4 | 2.7 | 92.7 | ▲ 0.1 | ▲ 0.4 | 94.6 | 3.8 | 96.5 | ▲ 0.3 | 94.2 | 0.0 | ▲ 0.6 | Aug. | | |
| 9月 | 99.2 | 0.4 | 101.6 | 1.9 | 92.7 | 0.0 | ▲ 0.4 | 96.1 | 1.6 | 93.6 | ▲ 4.6 | 94.1 | ▲ 0.1 | ▲ 0.7 | Sep. | | |
| 10月 | 101.8 | 2.6 | 105.7 | 1.1 | 92.7 | 0.0 | ▲ 0.6 | 93.6 | ▲ 2.6 | 93.9 | ▲ 3.4 | 94.1 | 0.0 | ▲ 0.7 | Oct. | | |
| 11月 | 101.6 | ▲ 0.2 | 105.9 | 3.0 | 92.7 | 0.0 | ▲ 0.4 | 96.9 | 3.5 | 98.6 | 2.1 | 94.1 | 0.0 | ▲ 0.6 | Nov. | | |
| 12月 | 101.8 | 0.2 | 103.2 | 1.2 | 92.5 | ▲ 0.2 | ▲ 0.6 | 99.6 | 2.8 | 105.8 | 4.1 | 94.1 | 0.0 | ▲ 0.6 | Dec. | | |
| 平成29 年 1月 | 104.2 | 2.4 | 100.1 | 8.5 | 91.3 | ▲ 1.3 | ▲ 1.8 | 98.8 | ▲ 0.8 | 102.7 | 3.4 | 94.1 | 0.0 | ▲ 0.4 | Jan. 2017 | | |

<11. 石油・石炭製品工業 ; Petroleum and coal products>

<12. パルプ・紙・紙加工品工業 ; Pulp, paper and paper products>

| | 稼働率 Operating Ratio | | | | 生産能力(末) Production Capacity | | | | 稼働率 Operating Ratio | | | | 生産能力(末) Production Capacity | | | | |
|------------|---|---|---|---|---|---|---|---|---|---|---|---|---|---|-----------|--|--|
| | 季節調整指数 Seasonally Adjusted Index | | 原指数 Original Index | | 原指数 Original Index | | 原指数 Original Index | | 季節調整指数 Seasonally Adjusted Index | | 原指数 Original Index | | 原指数 Original Index | | | | |
| | 前月(期)比 %Change From Previous Month (Quarter) | 前年 (同月期)比 %Change From Previous Year | 前月(期)比 %Change From Previous Month (Quarter) | 前年 (同月期)比 %Change From Previous Year | 前月(期)比 %Change From Previous Month (Quarter) | 前年 (同月期)比 %Change From Previous Year | 前月(期)比 %Change From Previous Month (Quarter) | 前年 (同月期)比 %Change From Previous Year | 前月(期)比 %Change From Previous Month (Quarter) | 前年 (同月期)比 %Change From Previous Year | 前月(期)比 %Change From Previous Month (Quarter) | 前年 (同月期)比 %Change From Previous Year | 前月(期)比 %Change From Previous Month (Quarter) | 前年 (同月期)比 %Change From Previous Year | | | |
| | | | | | | | | | | | | | | | | | |
| 平成 26 年 | | | 105.1 | 3.8 | 84.2 | | ▲ 9.0 | | | 101.2 | 1.8 | 94.6 | | ▲ 0.7 | C.Y. 2014 | | |
| 27 年 | | | 106.6 | 1.4 | 83.5 | | ▲ 0.8 | | | 99.5 | ▲ 1.7 | 95.2 | | 0.6 | 2015 | | |
| 28 年 | | | 111.0 | 4.1 | 80.9 | | ▲ 3.1 | | | 99.6 | 0.1 | 95.0 | | ▲ 0.2 | 2016 | | |
| 平成 25 年度 | | | 101.9 | 3.5 | 93.5 | | ▲ 1.9 | | | 101.4 | 5.2 | 94.2 | | ▲ 1.3 | F.Y. 2013 | | |
| 26 年度 | | | 106.8 | 4.8 | 84.2 | | ▲ 9.9 | | | 100.2 | ▲ 1.2 | 95.0 | | 0.8 | 2014 | | |
| 27 年度 | | | 106.7 | ▲ 0.1 | 83.5 | | ▲ 0.8 | | | 99.5 | ▲ 0.7 | 95.3 | | 0.3 | 2015 | | |
| 平成27 年 IV期 | 106.1 | 0.7 | 107.0 | ▲ 1.3 | 83.5 | 0.0 | ▲ 0.8 | 99.0 | ▲ 0.4 | 101.2 | ▲ 0.7 | 95.2 | 0.1 | 0.6 | Q4 2015 | | |
| 平成28 年 I期 | 108.0 | 1.8 | 114.2 | 0.2 | 83.5 | 0.0 | ▲ 0.8 | 99.8 | 0.8 | 99.5 | 0.1 | 95.3 | 0.1 | 0.3 | Q1 2016 | | |
| II期 | 115.4 | 6.9 | 107.5 | 8.5 | 81.5 | ▲ 2.4 | ▲ 2.4 | 99.9 | 0.1 | 99.4 | 0.7 | 94.9 | ▲ 0.4 | ▲ 0.2 | Q2 | | |
| III期 | 109.4 | ▲ 5.2 | 110.6 | 4.0 | 81.5 | 0.0 | ▲ 2.4 | 99.5 | ▲ 0.4 | 98.6 | 0.0 | 95.0 | 0.1 | ▲ 0.1 | Q3 | | |
| IV期 | 110.4 | 0.9 | 111.8 | 4.5 | 80.9 | ▲ 0.7 | ▲ 3.1 | 99.0 | ▲ 0.5 | 100.9 | ▲ 0.3 | 95.0 | 0.0 | ▲ 0.2 | Q4 | | |
| 平成27 年 11月 | 104.8 | ▲ 3.1 | 103.9 | ▲ 2.8 | 83.5 | 0.0 | ▲ 0.8 | 99.5 | 0.0 | 100.2 | 0.1 | 95.2 | 0.0 | 0.6 | Nov. 2015 | | |
| 12月 | 105.5 | 0.7 | 114.6 | ▲ 2.4 | 83.5 | 0.0 | ▲ 0.8 | 98.1 | ▲ 1.4 | 98.9 | ▲ 3.3 | 95.2 | 0.0 | 0.6 | Dec. | | |
| 平成28 年 1月 | 105.6 | 0.1 | 117.3 | ▲ 1.6 | 83.5 | 0.0 | ▲ 0.8 | 100.7 | 2.7 | 95.4 | 0.2 | 95.2 | 0.0 | 0.5 | Jan. 2016 | | |
| 2月 | 108.4 | 2.7 | 109.3 | 0.2 | 83.5 | 0.0 | ▲ 0.8 | 99.2 | ▲ 1.5 | 96.9 | 1.3 | 95.2 | 0.0 | 0.5 | Feb. | | |
| 3月 | 110.0 | 1.5 | 116.0 | 2.0 | 83.5 | 0.0 | ▲ 0.8 | 99.6 | 0.4 | 106.1 | ▲ 1.0 | 95.3 | 0.1 | 0.3 | Mar. | | |
| 4月 | 113.4 | 3.1 | 114.3 | 5.0 | 81.5 | ▲ 2.4 | ▲ 2.4 | 98.8 | ▲ 0.8 | 100.5 | ▲ 0.5 | 94.9 | ▲ 0.4 | ▲ 0.1 | Apr. | | |
| 5月 | 115.5 | 1.9 | 108.4 | 7.1 | 81.5 | 0.0 | ▲ 2.4 | 98.8 | 0.0 | 97.9 | 0.5 | 94.9 | 0.0 | ▲ 0.1 | May | | |
| 6月 | 117.4 | 1.6 | 99.8 | 14.4 | 81.5 | 0.0 | ▲ 2.4 | 102.2 | 3.4 | 99.9 | 2.1 | 94.9 | 0.0 | ▲ 0.2 | Jun. | | |
| 7月 | 109.8 | ▲ 6.5 | 110.3 | 3.0 | 81.5 | 0.0 | ▲ 2.4 | 99.3 | ▲ 2.8 | 97.3 | ▲ 1.7 | 94.9 | 0.0 | ▲ 0.1 | Jul. | | |
| 8月 | 111.4 | 1.5 | 117.0 | 9.2 | 81.5 | 0.0 | ▲ 2.4 | 98.9 | ▲ 0.4 | 97.9 | 1.8 | 95.0 | 0.1 | ▲ 0.1 | Aug. | | |
| 9月 | 107.1 | ▲ 3.9 | 104.4 | ▲ 0.3 | 81.5 | 0.0 | ▲ 2.4 | 100.2 | 1.3 | 100.6 | 0.1 | 95.0 | 0.0 | ▲ 0.1 | Sep. | | |
| 10月 | 106.7 | ▲ 0.4 | 101.8 | ▲ 0.8 | 80.9 | ▲ 0.7 | ▲ 3.1 | 98.9 | ▲ 1.3 | 103.3 | ▲ 1.1 | 95.0 | 0.0 | ▲ 0.2 | Oct. | | |
| 11月 | 111.8 | 4.8 | 110.3 | 6.2 | 80.9 | 0.0 | ▲ 3.1 | 97.7 | ▲ 1.2 | 98.9 | ▲ 1.3 | 95.0 | 0.0 | ▲ 0.2 | Nov. | | |
| 12月 | 112.8 | 0.9 | 123.2 | 7.5 | 80.9 | 0.0 | ▲ 3.1 | 100.3 | 2.7 | 100.6 | 1.7 | 95.0 | 0.0 | ▲ 0.2 | Dec. | | |
| 平成29 年 1月 | 111.5 | ▲ 1.2 | 123.2 | 5.0 | 80.9 | 0.0 | ▲ 3.1 | 100.8 | 0.5 | 96.0 | 0.6 | 95.0 | 0.0 | ▲ 0.2 | Jan. 2017 | | |

<13. 繊維工業 ; Textiles>

<14. その他工業 ; Other manufacturing>

| | 稼働率 Operating Ratio | | | | 生産能力(末) Production Capacity | | | | 稼働率 Operating Ratio | | | | 生産能力(末) Production Capacity | | | | |
|------------|---|---|---|---|---|---|---|---|---|---|---|---|---|---|-----------|--|--|
| | 季節調整指数 Seasonally Adjusted Index | | 原指数 Original Index | | 原指数 Original Index | | 原指数 Original Index | | 季節調整指数 Seasonally Adjusted Index | | 原指数 Original Index | | 原指数 Original Index | | | | |
| | 前月(期)比 %Change From Previous Month (Quarter) | 前年 (同月期)比 %Change From Previous Year | 前月(期)比 %Change From Previous Month (Quarter) | 前年 (同月期)比 %Change From Previous Year | 前月(期)比 %Change From Previous Month (Quarter) | 前年 (同月期)比 %Change From Previous Year | 前月(期)比 %Change From Previous Month (Quarter) | 前年 (同月期)比 %Change From Previous Year | 前月(期)比 %Change From Previous Month (Quarter) | 前年 (同月期)比 %Change From Previous Year | 前月(期)比 %Change From Previous Month (Quarter) | 前年 (同月期)比 %Change From Previous Year | 前月(期)比 %Change From Previous Month (Quarter) | 前年 (同月期)比 %Change From Previous Year | | | |
| | | | | | | | | | | | | | | | | | |
| 平成 26 年 | | | 105.1 | 3.0 | 88.3 | | ▲ 2.3 | | | 98.2 | ▲ 0.2 | 97.4 | | 0.3 | C.Y. 2014 | | |
| 27 年 | | | 103.4 | ▲ 1.6 | 85.7 | | ▲ 2.9 | | | 94.4 | ▲ 3.9 | 97.3 | | ▲ 0.1 | 2015 | | |
| 28 年 | | | 102.0 | ▲ 1.4 | 83.9 | | ▲ 2.1 | | | 93.4 | ▲ 1.1 | 93.9 | | ▲ 3.5 | 2016 | | |
| 平成 25 年度 | | | 103.5 | 2.9 | 88.9 | | ▲ 4.4 | | | 98.8 | 0.8 | 97.3 | | 0.4 | F.Y. 2013 | | |
| 26 年度 | | | 104.4 | 0.9 | 87.6 | | ▲ 1.5 | | | 97.9 | ▲ 0.9 | 97.4 | | 0.1 | 2014 | | |
| 27 年度 | | | 103.4 | ▲ 1.0 | 85.0 | | ▲ 3.0 | | | 93.0 | ▲ 5.0 | 97.4 | | 0.0 | 2015 | | |
| 平成27 年 IV期 | 103.5 | ▲ 0.2 | 103.3 | 0.0 | 85.7 | ▲ 0.6 | ▲ 2.9 | 93.5 | 1.6 | 95.1 | ▲ 3.6 | 97.3 | 0.0 | ▲ 0.1 | Q4 2015 | | |
| 平成28 年 I期 | 103.5 | 0.0 | 102.6 | 0.0 | 85.0 | ▲ 0.8 | ▲ 3.0 | 90.5 | ▲ 3.2 | 90.7 | ▲ 5.5 | 97.4 | 0.1 | 0.0 | Q1 2016 | | |
| II期 | 101.8 | ▲ 1.6 | 102.2 | ▲ 1.2 | 84.7 | ▲ 0.4 | ▲ 1.9 | 90.3 | ▲ 0.2 | 91.0 | ▲ 3.7 | 97.4 | 0.0 | 0.0 | Q2 | | |
| III期 | 101.9 | 0.1 | 102.3 | ▲ 1.8 | 84.3 | ▲ 0.5 | ▲ 2.2 | 95.6 | 5.9 | 95.7 | 4.1 | 93.9 | ▲ 3.6 | ▲ 3.5 | Q3 | | |
| IV期 | 101.1 | ▲ 0.8 | 100.8 | ▲ 2.4 | 83.9 | ▲ 0.5 | ▲ 2.1 | 94.6 | ▲ 1.0 | 96.1 | 1.1 | 93.9 | 0.0 | ▲ 3.5 | Q4 | | |
| 平成27 年 11月 | 104.2 | 0.5 | 104.3 | 1.9 | 85.8 | 0.0 | ▲ 3.1 | 94.1 | 0.2 | 97.5 | ▲ 3.0 | 97.3 | ▲ 0.1 | ▲ 0.1 | Nov. 2015 | | |
| 12月 | 102.7 | ▲ 1.4 | 100.9 | ▲ 0.9 | 85.7 | ▲ 0.1 | ▲ 2.9 | 92.5 | ▲ 1.7 | 86.0 | ▲ 3.3 | 97.3 | 0.0 | ▲ 0.1 | Dec. | | |
| 平成28 年 1月 | 102.3 | ▲ 0.4 | 99.9 | ▲ 1.9 | 85.1 | ▲ 0.7 | ▲ 3.4 | 91.7 | ▲ 0.9 | 81.4 | ▲ 6.4 | 97.4 | 0.1 | 0.0 | Jan. 2016 | | |
| 2月 | 103.7 | 1.4 | 101.7 | 0.9 | 85.0 | ▲ 0.1 | ▲ 3.1 | 89.1 | ▲ 2.8 | 91.9 | ▲ 3.9 | 97.4 | 0.0 | 0.0 | Feb. | | |
| 3月 | 104.6 | 0.9 | 106.2 | 0.9 | 85.0 | 0.0 | ▲ 3.0 | 90.7 | 1.8 | 98.7 | ▲ 6.3 | 97.4 | 0.0 | 0.0 | Mar. | | |
| 4月 | 102.2 | ▲ 2.3 | 102.8 | ▲ 1.0 | 84.8 | ▲ 0.2 | ▲ 3.1 | 90.9 | 0.2 | 94.0 | ▲ 4.7 | 97.4 | 0.0 | 0.0 | Apr. | | |
| 5月 | 101.0 | ▲ 1.2 | 101.0 | ▲ 1.5 | 84.8 | 0.0 | ▲ 3.1 | 89.2 | ▲ 1.9 | 84.4 | ▲ 3.7 | 97.4 | 0.0 | 0.0 | May | | |
| 6月 | 102.2 | 1.2 | 102.8 | ▲ 1.0 | 84.7 | ▲ 0.1 | ▲ 1.9 | 90.8 | 1.8 | 94.7 | ▲ 2.6 | 97.4 | 0.0 | 0.0 | Jun. | | |
| 7月 | 101.1 | ▲ 1.1 | 103.0 | ▲ 3.3 | 84.6 | ▲ 0.1 | ▲ 1.9 | 96.3 | 6.1 | 101.3 | 4.3 | 93.9 | ▲ 3.6 | ▲ 3.5 | Jul. | | |
| 8月 | 103.2 | 2.1 | 102.1 | 0.3 | 84.2 | ▲ 0.5 | ▲ 2.3 | 92.9 | ▲ 3.5 | 83.5 | 0.8 | 93.9 | 0.0 | ▲ 3.5 | Aug. | | |
| 9月 | 101.3 | ▲ 1.8 | 101.8 | ▲ 2.4 | 84.3 | 0.1 | ▲ 2.2 | 97.7 | 5.2 | 102.2 | 6.7 | 93.9 | 0.0 | ▲ 3.5 | Sep. | | |
| 10月 | 100.1 | ▲ 1.2 | 100.8 | ▲ 3.7 | 84.1 | ▲ 0.2 | ▲ 2.0 | 96.1 | ▲ 1.6 | 103.8 | 2.0 | 93.9 | 0.0 | ▲ 3.6 | Oct. | | |
| 11月 | 101.8 | 1.7 | 102.2 | ▲ 2.0 | 84.1 | 0.0 | ▲ 2.0 | 94.6 | ▲ 1.6 | 98.4 | 0.9 | 93.9 | 0.0 | ▲ 3.5 | Nov. | | |
| 12月 | 101.4 | ▲ 0.4 | 99.4 | ▲ 1.5 | 83.9 | ▲ 0.2 | ▲ 2.1 | 93.0 | ▲ 1.7 | 86.1 | 0.1 | 93.9 | 0.0 | ▲ 3.5 | Dec. | | |
| 平成29 年 1月 | 99.2 | ▲ 2.2 | 97.1 | ▲ 2.8 | 83.6 | ▲ 0.4 | ▲ 1.8 | 94.8 | 1.9 | 84.4 | 3.7 | 94.5 | 0.6 | ▲ 3.0 | Jan. 2017 | | |

<製造工業(除. 機械工業) ; Manufacturing (excl. Machinery)>

<機械工業 ; Machinery industry>

| | 稼働率 Operating Ratio | | | | 生産能力(末) Production Capacity | | | | 稼働率 Operating Ratio | | | | 生産能力(末) Production Capacity | | | | |
|------------|---|---|---|---|---|---|---|---|---|---|---|---|---|---|-----------|--|--|
| | 季節調整指数 Seasonally Adjusted Index | | 原指数 Original Index | | 原指数 Original Index | | 原指数 Original Index | | 季節調整指数 Seasonally Adjusted Index | | 原指数 Original Index | | 原指数 Original Index | | | | |
| | 前月(期)比 %Change From Previous Month (Quarter) | 前年 (同月期)比 %Change From Previous Year | 前月(期)比 %Change From Previous Month (Quarter) | 前年 (同月期)比 %Change From Previous Year | 前月(期)比 %Change From Previous Month (Quarter) | 前年 (同月期)比 %Change From Previous Year | 前月(期)比 %Change From Previous Month (Quarter) | 前年 (同月期)比 %Change From Previous Year | 前月(期)比 %Change From Previous Month (Quarter) | 前年 (同月期)比 %Change From Previous Year | 前月(期)比 %Change From Previous Month (Quarter) | 前年 (同月期)比 %Change From Previous Year | 前月(期)比 %Change From Previous Month (Quarter) | 前年 (同月期)比 %Change From Previous Year | | | |
| | | | | | | | | | | | | | | | | | |
| 平成 26 年 | | | 98.4 | 0.8 | 94.8 | | ▲ 1.7 | | | 103.4 | 6.5 | 95.6 | | ▲ 1.9 | C.Y. 2014 | | |
| 27 年 | | | 98.5 | 0.1 | 93.7 | | ▲ 1.2 | | | 98.9 | ▲ 4.4 | 95.9 | | 0.3 | 2015 | | |
| 28 年 | | | 98.8 | 0.3 | 92.5 | | ▲ 1.3 | | | 96.9 | ▲ 2.0 | 95.9 | | 0.0 | 2016 | | |
| 平成 25 年度 | | | 98.7 | 3.2 | 96.2 | | ▲ 0.9 | | | 100.8 | 5.8 | 96.0 | | ▲ 2.5 | F.Y. 2013 | | |
| 26 年度 | | | 98.2 | ▲ 0.5 | 94.7 | | ▲ 1.6 | | | 102.3 | 1.5 | 96.2 | | 0.2 | 2014 | | |
| 27 年度 | | | 98.5 | 0.3 | 93.4 | | ▲ 1.4 | | | 97.7 | ▲ 4.5 | 95.8 | | ▲ 0.4 | 2015 | | |
| 平成27 年 IV期 | 98.6 | ▲ 0.2 | 99.7 | 0.2 | 93.7 | ▲ 0.1 | ▲ 1.2 | 97.5 | 0.9 | 96.5 | ▲ 3.8 | 95.9 | 0.2 | 0.3 | Q4 2015 | | |
| 平成28 年 I期 | 97.9 | ▲ 0.7 | 98.8 | 0.0 | 93.4 | ▲ 0.3 | ▲ 1.4 | 96.8 | ▲ 0.7 | 98.0 | ▲ 4.7 | 95.8 | ▲ 0.1 | ▲ 0.4 | Q1 2016 | | |
| II期 | 97.5 | ▲ 0.4 | 96.5 | 0.2 | 93.0 | ▲ 0.4 | ▲ 1.2 | 94.1 | ▲ 2.8 | 93.3 | ▲ 4.5 | 95.7 | ▲ 0.1 | ▲ 0.2 | Q2 | | |
| III期 | 98.4 | 0.9 | 98.7 | ▲ 0.4 | 92.7 | ▲ 0.3 | ▲ 1.2 | 96.3 | 2.3 | 97.8 | ▲ 0.7 | 95.7 | 0.0 | 0.0 | Q3 | | |
| IV期 | 100.2 | 1.8 | 101.2 | 1.5 | 92.5 | ▲ 0.2 | ▲ 1.3 | 100.2 | 4.0 | 98.4 | 2.0 | 95.9 | 0.2 | 0.0 | Q4 | | |
| 平成27 年 11月 | 98.5 | ▲ 0.5 | 99.1 | 0.6 | 93.7 | 0.0 | ▲ 1.3 | 98.0 | ▲ 0.1 | 95.9 | ▲ 0.4 | 96.0 | ▲ 0.1 | 0.5 | Nov. 2015 | | |
| 12月 | 98.2 | ▲ 0.3 | 99.3 | ▲ 0.4 | 93.7 | 0.0 | ▲ 1.2 | 96.5 | ▲ 1.5 | 94.5 | ▲ 5.3 | 95.9 | ▲ 0.1 | 0.3 | Dec. | | |
| 平成28 年 1月 | 98.6 | 0.4 | 97.1 | ▲ 1.2 | 93.6 | ▲ 0.1 | ▲ 1.3 | 100.3 | 3.9 | 90.2 | ▲ 8.0 | 95.7 | ▲ 0.2 | ▲ 0.4 | Jan. 2016 | | |
| 2月 | 96.5 | ▲ 2.1 | 96.7 | 1.4 | 93.5 | ▲ 0.1 | ▲ 1.3 | 93.0 | ▲ 7.3 | 95.4 | ▲ 4.8 | 95.8 | 0.1 | ▲ 0.4 | Feb. | | |
| 3月 | 98.7 | 2.3 | 102.6 | 0.0 | 93.4 | ▲ 0.1 | ▲ 1.4 | 97.0 | 4.3 | 108.4 | ▲ 1.5 | 95.8 | 0.0 | ▲ 0.4 | Mar. | | |
| 4月 | 99.0 | 0.3 | 98.8 | 0.3 | 93.0 | ▲ 0.4 | ▲ 1.5 | 94.8 | ▲ 2.3 | 88.8 | ▲ 7.5 | 95.7 | ▲ 0.1 | ▲ 0.4 | Apr. | | |
| 5月 | 96.4 | ▲ 2.6 | 94.8 | ▲ 0.4 | 93.0 | 0.0 | ▲ 1.5 | 93.2 | ▲ 1.7 | 88.4 | ▲ 1.7 | 95.7 | 0.0 | ▲ 0.5 | May | | |
| 6月 | 97.2 | 0.8 | 95.9 | 0.6 | 93.0 | 0.0 | ▲ 1.2 | 94.3 | 1.2 | 102.8 | ▲ 4.2 | 95.7 | 0.0 | ▲ 0.2 | Jun. | | |
| 7月 | 97.5 | 0.3 | 99.4 | ▲ 2.1 | 92.8 | ▲ 0.2 | ▲ 1.1 | 95.6 | 1.4 | 101.1 | ▲ 6.1 | 95.6 | ▲ 0.1 | ▲ 0.5 | Jul. | | |
| 8月 | 99.2 | 1.7 | 97.6 | 2.1 | 92.7 | ▲ 0.1 | ▲ 1.2 | 97.7 | 2.2 | 90.2 | 6.4 | 95.6 | 0.0 | 0.0 | Aug. | | |
| 9月 | 98.6 | ▲ 0.6 | 99.1 | ▲ 1.0 | 92.7 | 0.0 | ▲ 1.2 | 95.5 | ▲ 2.3 | 102.0 | ▲ 0.9 | 95.7 | 0.1 | 0.0 | Sep. | | |
| 10月 | 98.8 | 0.2 | 100.1 | ▲ 0.5 | 92.5 | ▲ 0.2 | ▲ 1.3 | 97.6 | 2.2 | 96.3 | ▲ 2.9 | 95.9 | 0.2 | ▲ 0.2 | Oct. | | |
| 11月 | 100.4 | 1.6 | 101.4 | 2.3 | 92.5 | 0.0 | ▲ 1.3 | 101.4 | 3.9 | 101.6 | 5.9 | 95.8 | ▲ 0.1 | ▲ 0.2 | Nov. | | |
| 12月 | 101.4 | 1.0 | 102.2 | 2.9 | 92.5 | 0.0 | ▲ 1.3 | 101.6 | 0.2 | 97.2 | 2.9 | 95.9 | 0.1 | 0.0 | Dec. | | |
| 平成29 年 1月 | 101.1 | ▲ 0.3 | 99.8 | 2.8 | 92.4 | ▲ 0.1 | ▲ 1.3 | 101.7 | 0.1 | 93.7 | 3.9 | 95.7 | ▲ 0.2 | 0.0 | Jan. 2017 | | |