

2019年3月の製造工業生産能力指数・稼働率指数の動向
Indices of Production Capacity and Operating Ratio for March, 2019

Index. 2015 = 100

| 生産能力 Production Capacity | 原 指 数 Original Index | |
|--------------------------------|---------------------------------------|--|
| | 前月比(%) %Change from Previous Month | 前年同月比(%) %Change from Previous Year |
| 98.7 | 0.0 (3か月連続) | -0.1 (15か月連続) |
| 稼働率 Operating Ratio | 季節調整済指数 Seasonally Adjusted Index | 原 指 数 Original Index |
| | 前月比(%) %Change from Previous Month | 前年同月比(%) %Change from Previous Year |
| 100.6 | -0.4 (2か月ぶり) | 107.2 -4.5 (4か月連続) |

- (1) 3月の製造工業生産能力指数は、98.7で前月比0.0%の横ばいであった。
業種別にみると、生産用機械工業同0.2%、電気・情報通信機械工業同0.1%
が上昇し、汎用・業務用機械工業同-0.6%が低下した。
- (2) 3月の製造工業稼働率指数は、100.6で前月比-0.4%の低下であった。
業種別にみると、輸送機械工業同-2.2%、電気・情報通信機械工業同-3.6%、
金属製品工業同-5.9%等が低下し、化学工業同4.1%、鉄鋼・非鉄金属工業同
2.6%、汎用・業務用機械工業同1.9%等が上昇した。

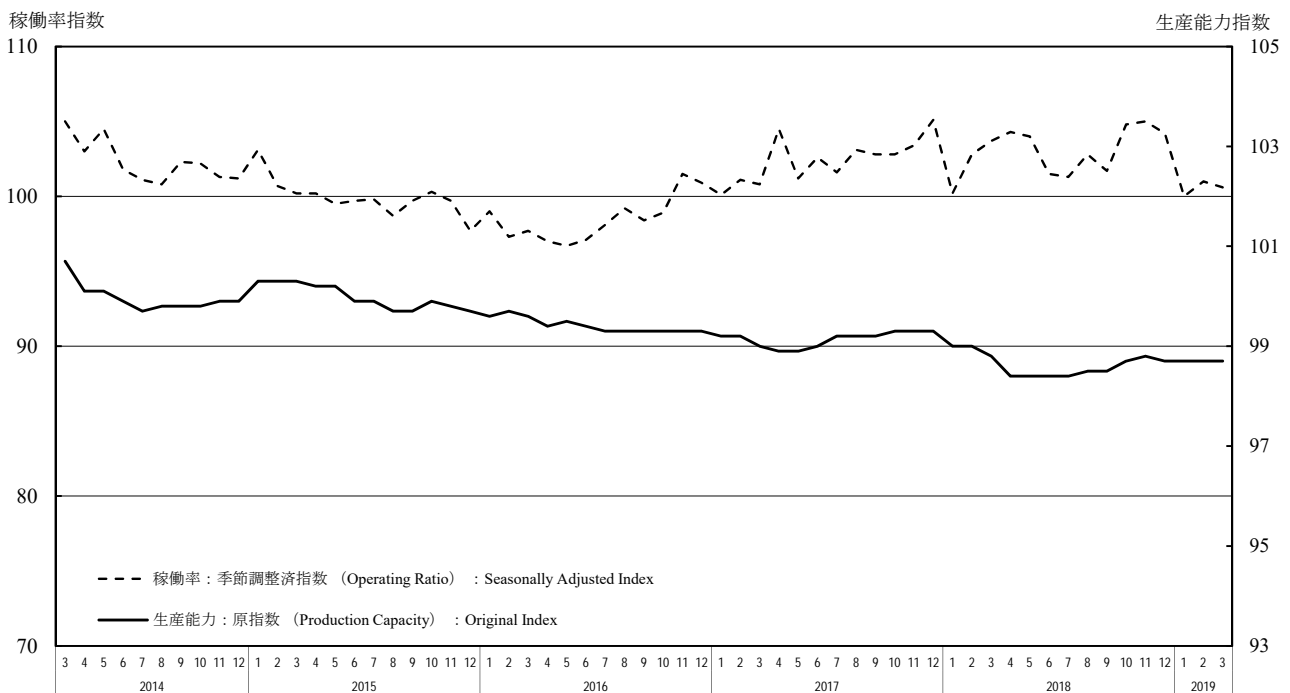
製造工業生産能力指数・稼働率指数の時系列表
 Historical Data for Indices of Production Capacity and Operating Ratio

index,2015= 100

| 年 月 | 生産能力(末) Production Capacity | | | 稼働率 Operating Ratio | | | | Year and Month |
|------------|---|-------------------------------------|-------------------------------------|---|-------------------------------------|--------------------|------|----------------|
| | 原指数 Original Index | | 前年(同月期)比 %Change From Previous Year | 季節調整済指数 Seasonally Adjusted Index | | 原指数 Original Index | | |
| | 前月(期)比 %Change From Previous Month(Quarter) | 前年(同月期)比 %Change From Previous Year | | 前月(期)比 %Change From Previous Month(Quarter) | 前年(同月期)比 %Change From Previous Year | | | |
| 2016 年 | 99.3 | | -0.4 | | | 98.5 | -1.5 | C.Y. 2016 |
| 2017 | 99.3 | | 0.0 | | | 102.3 | 3.9 | C.Y. 2017 |
| 2018 | 98.7 | | -0.6 | | | 103.1 | 0.8 | C.Y. 2018 |
| 2016 年度 | 99.0 | | -0.6 | | | 99.2 | -0.1 | F.Y. 2016 |
| 2017 | 98.8 | | -0.2 | | | 102.7 | 3.5 | F.Y. 2017 |
| 2018 | 98.7 | | -0.1 | | | 102.5 | -0.2 | F.Y. 2018 |
| 2018 年 I 期 | 98.8 | -0.5 | -0.2 | 102.2 | -1.5 | 103.8 | 1.4 | Q1 2018 |
| II 期 | 98.4 | -0.4 | -0.6 | 103.3 | 1.1 | 101.8 | 0.6 | Q2 |
| III 期 | 98.5 | 0.1 | -0.7 | 101.9 | -1.4 | 101.0 | -1.1 | Q3 |
| IV 期 | 98.7 | 0.2 | -0.6 | 104.7 | 2.7 | 105.7 | 2.0 | Q4 |
| 2019 年 I 期 | 98.7 | 0.0 | -0.1 | 100.5 | -4.0 | 101.5 | -2.2 | Q1 2019 |
| 2018 年 1月 | 99.0 | -0.3 | -0.2 | 100.2 | -4.7 | 97.6 | 1.2 | Jan. 2018 |
| 2月 | 99.0 | 0.0 | -0.2 | 102.8 | 2.6 | 101.6 | 1.4 | Feb. |
| 3月 | 98.8 | -0.2 | -0.2 | 103.7 | 0.9 | 112.2 | 1.4 | Mar. |
| 4月 | 98.4 | -0.4 | -0.5 | 104.3 | 0.6 | 102.1 | 2.4 | Apr. |
| 5月 | 98.4 | 0.0 | -0.5 | 104.0 | -0.3 | 99.8 | 3.0 | May |
| 6月 | 98.4 | 0.0 | -0.6 | 101.5 | -2.4 | 103.5 | -3.3 | Jun. |
| 7月 | 98.4 | 0.0 | -0.8 | 101.3 | -0.2 | 105.0 | 0.3 | Jul. |
| 8月 | 98.5 | 0.1 | -0.7 | 102.8 | 1.5 | 97.1 | -0.3 | Aug. |
| 9月 | 98.5 | 0.0 | -0.7 | 101.7 | -1.1 | 100.9 | -3.3 | Sep. |
| 10月 | 98.7 | 0.2 | -0.6 | 104.8 | 3.0 | 107.9 | 3.9 | Oct. |
| 11月 | 98.8 | 0.1 | -0.5 | 105.0 | 0.2 | 107.2 | 2.9 | Nov. |
| 12月 | 98.7 | -0.1 | -0.6 | 104.2 | -0.8 | 102.0 | -0.7 | Dec. |
| 2019 年 1月 | 98.7 | 0.0 | -0.3 | 100.0 | -4.0 | 97.4 | -0.2 | Jan. 2019 |
| 2月 | 98.7 | 0.0 | -0.3 | 101.0 | 1.0 | 99.8 | -1.8 | Feb. |
| 3月 | 98.7 | 0.0 | -0.1 | 100.6 | -0.4 | 107.2 | -4.5 | Mar. |

製造工業生産能力指数・稼働率指数の推移(グラフ)
 Historical Data (Graph) for Indices of Production Capacity and Operating Ratio

(2015 average=100)



〈鉄鋼・非鉄金属工業; Iron, steel and Non-ferrous metals〉

〈鉄鋼業; Iron and steel〉

index.2015= 100

| | 生産能力(末) Production Capacity | | | 稼働率 Operating Ratio | | | | 生産能力(末) Production Capacity | | | 稼働率 Operating Ratio | | | | |
|----------|---|--|--------------------------------------|---|--|---|--|---|--|--------------------------------------|------------------------|------|-----------|------|-----------|
| | 原指数 Original Index | | 季節調整済指数 Seasonally Adjusted Index | 原指数 Original Index | | 原指数 Original Index | | 原指数 Original Index | | 季節調整済指数 Seasonally Adjusted Index | 原指数 Original Index | | | | |
| | 前月(期)比 %Change From Previous Month (Quarter) | 前年(同月期)比 %Change From Previous Year | | 前月(期)比 %Change From Previous Month (Quarter) | 前年(同月期)比 %Change From Previous Year | 前月(期)比 %Change From Previous Month (Quarter) | 前年(同月期)比 %Change From Previous Year | 前月(期)比 %Change From Previous Month (Quarter) | 前年(同月期)比 %Change From Previous Year | | | | | | |
| | | | | | | | | | | | | | | | |
| 2016年 | 98.0 | | -1.5 | | 101.6 | 1.6 | 97.6 | -2.0 | | | 101.5 | 1.5 | C.Y. 2016 | | |
| 2017年 | 98.2 | | 0.2 | | 102.4 | 0.8 | 97.5 | -0.1 | | | 101.9 | 0.4 | 2017 | | |
| 2018年 | 98.5 | | 0.3 | | 102.8 | 0.4 | 97.6 | 0.1 | | | 101.8 | -0.1 | 2018 | | |
| 2016年度 | 98.2 | | -1.4 | | 102.3 | 2.6 | 98.0 | -1.8 | | | 102.4 | 3.0 | F.Y. 2016 | | |
| 2017年度 | 98.3 | | 0.1 | | 102.6 | 0.3 | 97.4 | -0.6 | | | 102.1 | -0.3 | 2017 | | |
| 2018年度 | 98.6 | | 0.3 | | 101.6 | -1.0 | 97.7 | 0.3 | | | 100.5 | -1.6 | 2018 | | |
| 2018年 I期 | 98.3 | 0.1 | 0.1 | 103.2 | 0.2 | 103.4 | 0.6 | 97.4 | -0.1 | -0.6 | 103.1 | 1.2 | 103.6 | 0.9 | Q1 2018 |
| II期 | 98.4 | 0.1 | 0.2 | 104.3 | 1.1 | 104.2 | 2.4 | 97.6 | 0.2 | -0.1 | 103.5 | 0.4 | 103.3 | 2.0 | Q2 |
| III期 | 98.6 | 0.2 | 0.1 | 101.0 | -3.2 | 100.4 | -1.2 | 97.8 | 0.2 | -0.2 | 99.6 | -3.8 | 99.5 | -2.2 | Q3 |
| IV期 | 98.5 | -0.1 | 0.3 | 102.5 | 1.5 | 103.1 | -0.3 | 97.6 | -0.2 | 0.1 | 101.2 | 1.6 | 100.9 | -1.1 | Q4 |
| 2019年 I期 | 98.6 | 0.1 | 0.3 | 98.7 | -3.7 | 98.8 | -4.4 | 97.7 | 0.1 | 0.3 | 97.9 | -3.3 | 98.4 | -5.0 | Q1 2019 |
| 2018年 1月 | 98.3 | 0.1 | 0.1 | 103.0 | -0.5 | 102.7 | 0.5 | 97.4 | -0.1 | -0.6 | 103.8 | 1.8 | 105.6 | 0.9 | Jan. 2018 |
| 2月 | 98.3 | 0.0 | 0.1 | 102.8 | -0.2 | 98.7 | -0.5 | 97.4 | 0.0 | -0.6 | 102.3 | -1.4 | 97.3 | -0.7 | Feb. |
| 3月 | 98.3 | 0.0 | 0.1 | 103.8 | 1.0 | 108.7 | 1.5 | 97.4 | 0.0 | -0.6 | 103.3 | 1.0 | 107.8 | 2.2 | Mar. |
| 4月 | 98.4 | 0.1 | 0.2 | 104.0 | 0.2 | 102.7 | 1.2 | 97.6 | 0.2 | -0.1 | 103.3 | 0.0 | 101.4 | -0.4 | Apr. |
| 5月 | 98.4 | 0.0 | 0.2 | 104.1 | 0.1 | 105.0 | 2.5 | 97.6 | 0.0 | -0.1 | 102.8 | -0.5 | 105.3 | 1.5 | May |
| 6月 | 98.4 | 0.0 | 0.2 | 104.7 | 0.6 | 104.8 | 3.1 | 97.6 | 0.0 | -0.1 | 104.4 | 1.6 | 103.2 | 5.0 | Jun. |
| 7月 | 98.5 | 0.1 | 0.1 | 100.3 | -4.2 | 101.1 | -0.5 | 97.8 | 0.2 | -0.2 | 98.2 | -5.9 | 98.4 | -0.7 | Jul. |
| 8月 | 98.6 | 0.1 | 0.2 | 102.5 | 2.2 | 100.5 | 0.2 | 97.8 | 0.0 | -0.2 | 101.3 | 3.2 | 102.8 | -0.5 | Aug. |
| 9月 | 98.6 | 0.0 | 0.1 | 100.2 | -2.2 | 99.6 | -3.3 | 97.8 | 0.0 | -0.2 | 99.2 | -2.1 | 97.3 | -5.3 | Sep. |
| 10月 | 98.5 | -0.1 | 0.1 | 102.2 | 2.0 | 105.3 | 0.0 | 97.6 | -0.2 | -0.2 | 100.7 | 1.5 | 102.2 | -1.4 | Oct. |
| 11月 | 98.5 | 0.0 | 0.3 | 102.9 | 0.7 | 103.2 | 0.1 | 97.6 | 0.0 | 0.1 | 101.7 | 1.0 | 100.9 | -0.5 | Nov. |
| 12月 | 98.5 | 0.0 | 0.3 | 102.5 | -0.4 | 100.9 | -0.8 | 97.6 | 0.0 | 0.1 | 101.1 | -0.6 | 99.7 | -1.1 | Dec. |
| 2019年 1月 | 98.6 | 0.1 | 0.3 | 98.6 | -3.8 | 98.3 | -4.3 | 97.7 | 0.1 | 0.3 | 97.1 | -4.0 | 98.8 | -6.4 | Jan. 2019 |
| 2月 | 98.6 | 0.0 | 0.3 | 97.5 | -1.1 | 93.6 | -5.2 | 97.7 | 0.0 | 0.3 | 96.1 | -1.0 | 91.4 | -6.1 | Feb. |
| 3月 | 98.6 | 0.0 | 0.3 | 100.0 | 2.6 | 104.4 | -4.0 | 97.7 | 0.0 | 0.3 | 100.6 | 4.7 | 105.1 | -2.5 | Mar. |

〈非鉄金属工業; Non-ferrous metals〉

〈金属製品工業; Fabricated metals〉

| | 生産能力(末) Production Capacity | | | 稼働率 Operating Ratio | | | | 生産能力(末) Production Capacity | | | 稼働率 Operating Ratio | | | | |
|----------|---|--|--------------------------------------|---|--|---|--|---|--|--------------------------------------|------------------------|------|-----------|------|-----------|
| | 原指数 Original Index | | 季節調整済指数 Seasonally Adjusted Index | 原指数 Original Index | | 原指数 Original Index | | 原指数 Original Index | | 季節調整済指数 Seasonally Adjusted Index | 原指数 Original Index | | | | |
| | 前月(期)比 %Change From Previous Month (Quarter) | 前年(同月期)比 %Change From Previous Year | | 前月(期)比 %Change From Previous Month (Quarter) | 前年(同月期)比 %Change From Previous Year | 前月(期)比 %Change From Previous Month (Quarter) | 前年(同月期)比 %Change From Previous Year | 前月(期)比 %Change From Previous Month (Quarter) | 前年(同月期)比 %Change From Previous Year | | | | | | |
| | | | | | | | | | | | | | | | |
| 2016年 | 98.7 | | -0.7 | | 101.7 | 1.7 | 100.2 | -0.1 | | | 97.4 | -2.6 | C.Y. 2016 | | |
| 2017年 | 99.6 | | 0.9 | | 103.5 | 1.8 | 99.7 | -0.5 | | | 99.3 | 2.0 | 2017 | | |
| 2018年 | 100.3 | | 0.7 | | 104.7 | 1.2 | 99.0 | -0.7 | | | 103.3 | 4.0 | 2018 | | |
| 2016年度 | 98.5 | | -0.8 | | 102.1 | 1.8 | 99.5 | -1.1 | | | 97.0 | -2.8 | F.Y. 2016 | | |
| 2017年度 | 99.9 | | 1.4 | | 103.5 | 1.4 | 99.7 | 0.2 | | | 100.1 | 3.2 | 2017 | | |
| 2018年度 | 100.4 | | 0.5 | | 103.9 | 0.4 | 98.9 | -0.8 | | | 103.7 | 3.6 | 2018 | | |
| 2018年 I期 | 99.9 | 0.3 | 1.4 | 103.1 | -1.9 | 102.9 | -0.2 | 99.7 | 0.0 | 0.2 | 100.8 | -1.1 | 98.5 | 3.5 | Q1 2018 |
| II期 | 100.0 | 0.1 | 0.8 | 105.7 | 2.5 | 106.0 | 2.8 | 99.1 | -0.6 | -0.5 | 102.8 | 2.0 | 105.0 | 4.4 | Q2 |
| III期 | 100.3 | 0.3 | 0.8 | 104.3 | -1.3 | 102.2 | 0.6 | 98.9 | -0.2 | -0.8 | 103.4 | 0.6 | 105.3 | 3.2 | Q3 |
| IV期 | 100.3 | 0.0 | 0.7 | 105.6 | 1.2 | 107.8 | 1.4 | 99.0 | 0.1 | -0.7 | 106.3 | 2.8 | 104.6 | 5.4 | Q4 |
| 2019年 I期 | 100.4 | 0.1 | 0.5 | 100.2 | -5.1 | 99.5 | -3.3 | 98.9 | -0.1 | -0.8 | 102.8 | -3.3 | 99.8 | 1.3 | Q1 2019 |
| 2018年 1月 | 99.9 | 0.3 | 1.3 | 101.0 | -4.4 | 96.6 | -0.5 | 99.7 | 0.0 | 0.1 | 99.8 | -5.6 | 89.7 | 4.5 | Jan. 2018 |
| 2月 | 99.9 | 0.0 | 1.3 | 103.6 | 2.6 | 101.7 | 0.0 | 99.7 | 0.0 | 0.2 | 101.1 | 1.3 | 94.1 | 2.4 | Feb. |
| 3月 | 99.9 | 0.0 | 1.4 | 104.8 | 1.2 | 110.5 | 0.0 | 99.7 | 0.0 | 0.2 | 101.5 | 0.4 | 111.7 | 3.4 | Mar. |
| 4月 | 100.0 | 0.1 | 0.9 | 105.9 | 1.0 | 105.6 | 4.5 | 98.9 | -0.8 | -0.7 | 105.5 | 3.9 | 106.7 | 8.5 | Apr. |
| 5月 | 100.0 | 0.0 | 0.9 | 106.2 | 0.3 | 104.3 | 4.5 | 99.1 | 0.2 | -0.5 | 104.0 | -1.4 | 104.0 | 8.2 | May |
| 6月 | 100.0 | 0.0 | 0.8 | 105.0 | -1.1 | 108.1 | -0.2 | 99.1 | 0.0 | -0.5 | 98.8 | -5.0 | 104.2 | -3.0 | Jun. |
| 7月 | 100.0 | 0.0 | 0.8 | 102.9 | -2.0 | 106.8 | -0.1 | 98.9 | -0.2 | -0.7 | 102.5 | 3.7 | 110.3 | 2.2 | Jul. |
| 8月 | 100.2 | 0.2 | 1.0 | 105.0 | 2.0 | 95.6 | 1.6 | 98.9 | 0.0 | -0.8 | 102.5 | 0.0 | 99.8 | 1.5 | Aug. |
| 9月 | 100.3 | 0.1 | 0.8 | 105.1 | 0.1 | 104.3 | 0.6 | 98.9 | 0.0 | -0.8 | 105.1 | 2.5 | 105.8 | 5.9 | Sep. |
| 10月 | 100.3 | 0.0 | 0.8 | 105.9 | 0.8 | 111.9 | 2.9 | 98.9 | 0.0 | -0.9 | 106.6 | 1.4 | 108.2 | 9.1 | Oct. |
| 11月 | 100.3 | 0.0 | 0.8 | 105.3 | -0.6 | 108.1 | 1.4 | 99.0 | 0.1 | -0.7 | 106.6 | 0.0 | 107.0 | 7.2 | Nov. |
| 12月 | 100.3 | 0.0 | 0.7 | 105.5 | 0.2 | 103.3 | -0.4 | 99.0 | 0.0 | -0.7 | 105.6 | -0.9 | 98.5 | 0.0 | Dec. |
| 2019年 1月 | 100.4 | 0.1 | 0.5 | 101.6 | -3.7 | 97.2 | 0.6 | 98.7 | -0.3 | -1.0 | 105.2 | -0.4 | 94.5 | 5.4 | Jan. 2019 |
| 2月 | 100.4 | 0.0 | 0.5 | 100.1 | -1.5 | 98.3 | -3.3 | 98.9 | 0.2 | -0.8 | 104.7 | -0.5 | 97.5 | 3.6 | Feb. |
| 3月 | 100.4 | 0.0 | 0.5 | 98.9 | -1.2 | 103.0 | -6.8 | 98.9 | 0.0 | -0.8 | 98.5 | -5.9 | 107.4 | -3.8 | Mar. |

〈生産用機械工業; Production machinery〉

〈汎用・業務用機械工業; General-purpose and business oriented machinery〉

index.2015= 100

| | 生産能力(末) Production Capacity | | | 稼働率 Operating Ratio | | | | 生産能力(末) Production Capacity | | | 稼働率 Operating Ratio | | | | |
|----------|---|---|---|---|---|---|---|---|---|---|---|---|---|---|-----------|
| | 原指数 Original Index | | 前年 (同月期)比 %Change From Previous Year | 季節調整済指数 Seasonally Adjusted Index | | 原指数 Original Index | | 原指数 Original Index | | 前年 (同月期)比 %Change From Previous Year | 季節調整済指数 Seasonally Adjusted Index | | 原指数 Original Index | | |
| | 前月(期)比 %Change From Previous Month (Quarter) | 前年 (同月期)比 %Change From Previous Year | | 前月(期)比 %Change From Previous Month (Quarter) | 前年 (同月期)比 %Change From Previous Year | 前月(期)比 %Change From Previous Month (Quarter) | 前年 (同月期)比 %Change From Previous Year | 前月(期)比 %Change From Previous Month (Quarter) | 前年 (同月期)比 %Change From Previous Year | | 前月(期)比 %Change From Previous Month (Quarter) | 前年 (同月期)比 %Change From Previous Year | 前月(期)比 %Change From Previous Month (Quarter) | 前年 (同月期)比 %Change From Previous Year | |
| | | | | | | | | | | | | | | | |
| 2016年 | 98.2 | | 0.1 | | | 86.9 | -13.1 | 99.7 | 0.0 | | | 97.8 | -2.2 | C.Y. 2016 | |
| 2017年 | 101.3 | | 3.2 | | | 94.6 | 8.9 | 97.5 | -2.2 | | | 105.4 | 7.8 | 2017 | |
| 2018年 | 103.6 | | 2.3 | | | 97.4 | 3.0 | 97.0 | -0.5 | | | 111.6 | 5.9 | 2018 | |
| 2016年度 | 98.6 | | 0.0 | | | 86.8 | -9.7 | 98.7 | -1.3 | | | 99.2 | 0.7 | F.Y. 2016 | |
| 2017年度 | 101.7 | | 3.1 | | | 97.5 | 12.3 | 95.9 | -2.8 | | | 106.6 | 7.5 | 2017 | |
| 2018年度 | 104.7 | | 2.9 | | | 95.5 | -2.1 | 96.3 | 0.4 | | | 111.2 | 4.3 | 2018 | |
| 2018年 I期 | 101.7 | 0.4 | 3.1 | 100.0 | -0.9 | 101.4 | 12.9 | 95.9 | -1.6 | -2.8 | 107.5 | -1.9 | 109.3 | 4.7 | Q1 2018 |
| II期 | 102.3 | 0.6 | 2.0 | 97.1 | -2.9 | 95.0 | 2.3 | 97.1 | 1.3 | -2.1 | 111.1 | 3.3 | 111.6 | 5.1 | Q2 |
| III期 | 103.0 | 0.7 | 2.4 | 93.0 | -4.2 | 94.3 | -3.1 | 97.0 | -0.1 | -2.2 | 111.4 | 0.3 | 108.5 | 5.8 | Q3 |
| IV期 | 103.6 | 0.6 | 2.3 | 99.4 | 6.9 | 98.9 | 0.5 | 97.0 | 0.0 | -0.5 | 116.2 | 4.3 | 116.9 | 7.7 | Q4 |
| 2019年 I期 | 104.7 | 1.1 | 2.9 | 93.4 | -6.0 | 93.8 | -7.5 | 96.3 | -0.7 | 0.4 | 106.9 | -8.0 | 107.6 | -1.6 | Q1 2019 |
| 2018年 1月 | 101.5 | 0.2 | 3.2 | 98.7 | -7.3 | 90.4 | 15.3 | 96.2 | -1.3 | -2.5 | 103.1 | -8.8 | 98.5 | 4.2 | Jan. 2018 |
| 2月 | 101.7 | 0.2 | 3.1 | 100.0 | 1.3 | 98.5 | 13.0 | 95.9 | -0.3 | -2.8 | 108.2 | 4.9 | 109.4 | 4.8 | Feb. |
| 3月 | 101.7 | 0.0 | 3.1 | 101.2 | 1.2 | 115.2 | 10.9 | 95.9 | 0.0 | -2.8 | 111.1 | 2.7 | 119.9 | 5.0 | Mar. |
| 4月 | 101.9 | 0.2 | 2.0 | 98.2 | -3.0 | 93.5 | 7.1 | 96.5 | 0.6 | -2.7 | 110.6 | -0.5 | 110.2 | 4.6 | Apr. |
| 5月 | 101.9 | 0.0 | 1.9 | 98.2 | 0.0 | 91.5 | 5.4 | 97.1 | 0.6 | -2.1 | 112.6 | 1.8 | 108.1 | 8.6 | May |
| 6月 | 102.3 | 0.4 | 2.0 | 95.0 | -3.3 | 99.9 | -4.5 | 97.1 | 0.0 | -2.1 | 110.0 | -2.3 | 116.5 | 2.4 | Jun. |
| 7月 | 102.3 | 0.0 | 1.3 | 93.3 | -1.8 | 96.2 | -2.6 | 97.1 | 0.0 | -2.1 | 107.4 | -2.4 | 112.0 | 5.8 | Jul. |
| 8月 | 102.5 | 0.2 | 1.6 | 95.2 | 2.0 | 92.0 | -3.2 | 97.1 | 0.0 | -2.1 | 113.9 | 6.1 | 104.6 | 8.4 | Aug. |
| 9月 | 103.0 | 0.5 | 2.4 | 90.6 | -4.8 | 94.7 | -3.6 | 97.0 | -0.1 | -2.2 | 113.0 | -0.8 | 109.0 | 3.5 | Sep. |
| 10月 | 103.1 | 0.1 | 2.1 | 98.7 | 8.9 | 101.8 | 6.0 | 97.0 | 0.0 | -0.5 | 115.8 | 2.5 | 122.3 | 10.6 | Oct. |
| 11月 | 104.0 | 0.9 | 3.0 | 101.9 | 3.2 | 101.1 | 4.0 | 97.0 | 0.0 | -0.5 | 116.5 | 0.6 | 119.0 | 9.3 | Nov. |
| 12月 | 103.6 | -0.4 | 2.3 | 97.7 | -4.1 | 93.9 | -7.9 | 97.0 | 0.0 | -0.5 | 116.4 | -0.1 | 109.4 | 3.3 | Dec. |
| 2019年 1月 | 104.8 | 1.2 | 3.3 | 93.7 | -4.1 | 85.8 | -5.1 | 96.9 | -0.1 | 0.7 | 107.4 | -7.7 | 102.6 | 4.2 | Jan. 2019 |
| 2月 | 104.5 | -0.3 | 2.8 | 93.3 | -0.4 | 91.9 | -6.7 | 96.9 | 0.0 | 1.0 | 105.7 | -1.6 | 106.9 | -2.3 | Feb. |
| 3月 | 104.7 | 0.2 | 2.9 | 93.1 | -0.2 | 103.6 | -10.1 | 96.3 | -0.6 | 0.4 | 107.7 | 1.9 | 113.3 | -5.5 | Mar. |

〈電気・情報通信機械工業; Electrical machinery, and Information and communication electronics equipment〉

〈電子部品・デバイス工業; Electronic parts and devices〉

| | 生産能力(末) Production Capacity | | | 稼働率 Operating Ratio | | | | 生産能力(末) Production Capacity | | | 稼働率 Operating Ratio | | | | |
|----------|---|---|---|---|---|---|---|---|---|---|---|---|---|---|-----------|
| | 原指数 Original Index | | 前年 (同月期)比 %Change From Previous Year | 季節調整済指数 Seasonally Adjusted Index | | 原指数 Original Index | | 原指数 Original Index | | 前年 (同月期)比 %Change From Previous Year | 季節調整済指数 Seasonally Adjusted Index | | 原指数 Original Index | | |
| | 前月(期)比 %Change From Previous Month (Quarter) | 前年 (同月期)比 %Change From Previous Year | | 前月(期)比 %Change From Previous Month (Quarter) | 前年 (同月期)比 %Change From Previous Year | 前月(期)比 %Change From Previous Month (Quarter) | 前年 (同月期)比 %Change From Previous Year | 前月(期)比 %Change From Previous Month (Quarter) | 前年 (同月期)比 %Change From Previous Year | | 前月(期)比 %Change From Previous Month (Quarter) | 前年 (同月期)比 %Change From Previous Year | 前月(期)比 %Change From Previous Month (Quarter) | 前年 (同月期)比 %Change From Previous Year | |
| | | | | | | | | | | | | | | | |
| 2016年 | 102.4 | | 0.8 | | | 98.1 | -1.9 | 99.8 | 0.1 | | | 102.5 | 2.5 | C.Y. 2016 | |
| 2017年 | 106.7 | | 4.2 | | | 102.7 | 4.7 | 98.2 | -1.6 | | | 102.4 | -0.1 | 2017 | |
| 2018年 | 107.0 | | 0.3 | | | 102.4 | -0.3 | 93.6 | -4.7 | | | 106.2 | 3.7 | 2018 | |
| 2016年度 | 102.7 | | 1.1 | | | 100.3 | 2.2 | 99.7 | 0.2 | | | 102.3 | 1.6 | F.Y. 2016 | |
| 2017年度 | 107.0 | | 4.2 | | | 102.0 | 1.7 | 94.8 | -4.9 | | | 103.2 | 0.9 | 2017 | |
| 2018年度 | 106.1 | | -0.8 | | | 97.9 | -4.0 | 93.7 | -1.2 | | | 106.5 | 3.2 | 2018 | |
| 2018年 I期 | 107.0 | 0.3 | 4.2 | 101.9 | -0.8 | 99.0 | -2.5 | 94.8 | -3.5 | -4.9 | 104.1 | 1.6 | 104.2 | 2.9 | Q1 2018 |
| II期 | 103.4 | -3.4 | 0.6 | 103.6 | 1.7 | 103.6 | 1.3 | 93.9 | -0.9 | -4.2 | 105.3 | 1.2 | 111.5 | 1.9 | Q2 |
| III期 | 103.3 | -0.1 | -0.3 | 101.6 | -1.9 | 104.9 | -0.3 | 93.9 | 0.0 | -4.2 | 106.6 | 1.2 | 105.9 | 3.4 | Q3 |
| IV期 | 107.0 | 3.6 | 0.3 | 102.3 | 0.7 | 102.1 | 0.5 | 93.6 | -0.3 | -4.7 | 108.9 | 2.2 | 103.1 | 6.6 | Q4 |
| 2019年 I期 | 106.1 | -0.8 | -0.8 | 83.9 | -18.0 | 81.1 | -18.1 | 93.7 | 0.1 | -1.2 | 106.0 | -2.7 | 105.3 | 1.1 | Q1 2019 |
| 2018年 1月 | 107.0 | 0.3 | 4.3 | 102.5 | -0.8 | 102.1 | -1.1 | 96.2 | -2.0 | -3.5 | 102.6 | -0.4 | 93.1 | 2.9 | Jan. 2018 |
| 2月 | 107.0 | 0.0 | 4.3 | 101.4 | -1.1 | 93.5 | -3.2 | 96.2 | 0.0 | -3.5 | 105.8 | 3.1 | 102.5 | 3.4 | Feb. |
| 3月 | 107.0 | 0.0 | 4.2 | 101.8 | 0.4 | 101.4 | -3.2 | 94.8 | -1.5 | -4.9 | 104.0 | -1.7 | 117.0 | 2.5 | Mar. |
| 4月 | 103.6 | -3.2 | 1.6 | 104.3 | 2.5 | 102.1 | 2.8 | 93.9 | -0.9 | -4.2 | 104.5 | 0.5 | 105.7 | 2.2 | Apr. |
| 5月 | 103.5 | -0.1 | 0.8 | 104.3 | 0.0 | 106.7 | 2.3 | 93.9 | 0.0 | -4.2 | 107.8 | 3.2 | 109.4 | 6.3 | May |
| 6月 | 103.4 | -0.1 | 0.6 | 102.2 | -2.0 | 102.1 | -1.1 | 93.9 | 0.0 | -4.2 | 103.6 | -3.9 | 119.5 | -2.0 | Jun. |
| 7月 | 103.3 | -0.1 | -0.3 | 103.4 | 1.2 | 106.8 | 4.2 | 93.9 | 0.0 | -4.2 | 106.8 | 3.1 | 120.9 | 5.3 | Jul. |
| 8月 | 103.4 | 0.1 | -0.2 | 101.4 | -1.9 | 107.1 | -1.6 | 93.9 | 0.0 | -4.2 | 109.0 | 2.1 | 99.0 | 5.7 | Aug. |
| 9月 | 103.3 | -0.1 | -0.3 | 100.1 | -1.3 | 100.7 | -3.5 | 93.9 | 0.0 | -4.2 | 104.1 | -4.5 | 97.8 | -0.8 | Sep. |
| 10月 | 107.2 | 3.8 | 0.5 | 104.6 | 4.5 | 107.6 | 3.7 | 93.6 | -0.3 | -4.6 | 109.6 | 5.3 | 104.2 | 8.8 | Oct. |
| 11月 | 107.5 | 0.3 | 0.6 | 102.2 | -2.3 | 102.9 | 1.1 | 93.6 | 0.0 | -4.6 | 107.6 | -1.8 | 100.9 | 4.9 | Nov. |
| 12月 | 107.0 | -0.5 | 0.3 | 100.0 | -2.2 | 95.7 | -3.5 | 93.6 | 0.0 | -4.7 | 109.6 | 1.9 | 104.2 | 6.1 | Dec. |
| 2019年 1月 | 106.2 | -0.7 | -0.7 | 86.1 | -13.9 | 85.8 | -16.0 | 93.6 | 0.0 | -2.7 | 102.4 | -6.6 | 92.9 | -0.2 | Jan. 2019 |
| 2月 | 106.1 | -0.1 | -0.8 | 84.5 | -1.9 | 77.9 | -16.7 | 93.6 | 0.0 | -2.7 | 109.7 | 7.1 | 106.3 | 3.7 | Feb. |
| 3月 | 106.1 | 0.0 | -0.8 | 81.0 | -4.1 | 79.6 | -21.5 | 93.7 | 0.1 | -1.2 | 105.8 | -3.6 | 116.8 | -0.2 | Mar. |

〈電気機械工業; Electrical machinery〉

〈情報通信機械工業; Information and communication electronics equipment〉

index.2015= 100

| | 生産能力(末) Production Capacity | | | 稼働率 Operating Ratio | | | | 生産能力(末) Production Capacity | | | 稼働率 Operating Ratio | | | | | |
|----------|---|------|--|---|--|---|--|---|------|--|--------------------------------------|---|-----------------------|--|-----------|--|
| | 原指数 Original Index | | | 季節調整済指数 Seasonally Adjusted Index | | 原指数 Original Index | | 原指数 Original Index | | | 季節調整済指数 Seasonally Adjusted Index | | 原指数 Original Index | | | |
| | 前月(期)比 %Change From Previous Month (Quarter) | | 前年 (同月期)比 %Change From Previous Year | 前月(期)比 %Change From Previous Month (Quarter) | 前年 (同月期)比 %Change From Previous Year | 前月(期)比 %Change From Previous Month (Quarter) | 前年 (同月期)比 %Change From Previous Year | 前月(期)比 %Change From Previous Month (Quarter) | | 前年 (同月期)比 %Change From Previous Year | | 前月(期)比 %Change From Previous Month (Quarter) | | 前年 (同月期)比 %Change From Previous Year | | |
| | | | | | | | | | | | | | | | | |
| 2016年 | 101.9 | | 1.4 | | | 103.2 | 3.2 | 96.4 | | -1.8 | | | 100.8 | 0.8 | C.Y. 2016 | |
| 2017年 | 101.0 | | -0.9 | | | 104.5 | 1.3 | 93.3 | | -3.2 | | | 97.5 | -3.3 | 2017 | |
| 2018年 | 98.4 | | -2.6 | | | 106.5 | 1.9 | 85.5 | | -8.4 | | | 105.5 | 8.2 | 2018 | |
| 2016年度 | 101.8 | | 0.6 | | | 103.2 | 1.6 | 96.3 | | -0.4 | | | 99.9 | 1.6 | F.Y. 2016 | |
| 2017年度 | 100.2 | | -1.6 | | | 105.1 | 1.8 | 85.8 | | -10.9 | | | 98.5 | -1.4 | 2017 | |
| 2018年度 | 98.5 | | -1.7 | | | 106.6 | 1.4 | 85.6 | | -0.2 | | | 106.2 | 7.8 | 2018 | |
| 2018年 I期 | 100.2 | -0.8 | -1.6 | 106.2 | 1.6 | 101.5 | 2.4 | 85.8 | -8.0 | -10.9 | 99.4 | 2.6 | 110.7 | 3.7 | Q1 2018 | |
| II期 | 98.9 | -1.3 | -2.1 | 105.3 | -0.8 | 117.8 | 0.7 | 85.3 | -0.6 | -8.2 | 106.6 | 7.2 | 96.0 | 6.0 | Q2 | |
| III期 | 98.9 | 0.0 | -2.1 | 107.2 | 1.8 | 106.1 | 1.6 | 85.5 | 0.2 | -8.2 | 106.0 | -0.6 | 105.5 | 8.3 | Q3 | |
| IV期 | 98.4 | -0.5 | -2.6 | 107.4 | 0.2 | 100.5 | 3.2 | 85.5 | 0.0 | -8.4 | 111.6 | 5.3 | 109.6 | 15.2 | Q4 | |
| 2019年 I期 | 98.5 | 0.1 | -1.7 | 107.4 | 0.0 | 102.0 | 0.5 | 85.6 | 0.1 | -0.2 | 102.8 | -7.9 | 113.6 | 2.6 | Q1 2019 | |
| 2018年 1月 | 100.3 | -0.7 | -1.4 | 102.5 | -2.5 | 90.9 | 0.1 | 89.3 | -4.3 | -7.3 | 101.3 | 3.7 | 98.4 | 9.3 | Jan. 2018 | |
| 2月 | 100.3 | 0.0 | -1.5 | 107.9 | 5.3 | 101.0 | 3.6 | 89.2 | -0.1 | -7.4 | 101.6 | 0.3 | 106.2 | 3.3 | Feb. | |
| 3月 | 100.2 | -0.1 | -1.6 | 108.1 | 0.2 | 112.7 | 3.4 | 85.8 | -3.8 | -10.9 | 95.4 | -6.1 | 127.5 | 0.2 | Mar. | |
| 4月 | 98.9 | -1.3 | -2.1 | 105.1 | -2.8 | 112.1 | 2.3 | 85.4 | -0.5 | -8.3 | 104.4 | 9.4 | 89.9 | 1.9 | Apr. | |
| 5月 | 98.9 | 0.0 | -2.1 | 106.8 | 1.6 | 115.3 | 3.3 | 85.4 | 0.0 | -8.1 | 112.1 | 7.4 | 94.9 | 16.9 | May | |
| 6月 | 98.9 | 0.0 | -2.1 | 104.1 | -2.5 | 126.1 | -2.9 | 85.3 | -0.1 | -8.2 | 103.3 | -7.9 | 103.3 | 0.9 | Jun. | |
| 7月 | 98.9 | 0.0 | -2.1 | 106.1 | 1.9 | 125.9 | 2.4 | 85.3 | 0.0 | -8.3 | 108.7 | 5.2 | 108.7 | 14.8 | Jul. | |
| 8月 | 98.9 | 0.0 | -2.1 | 108.6 | 2.4 | 98.1 | 2.9 | 85.3 | 0.0 | -8.3 | 109.6 | 0.8 | 101.2 | 12.7 | Aug. | |
| 9月 | 98.9 | 0.0 | -2.1 | 107.0 | -1.5 | 94.2 | -0.7 | 85.5 | 0.2 | -8.2 | 99.8 | -8.9 | 106.7 | -1.0 | Sep. | |
| 10月 | 98.4 | -0.5 | -2.6 | 109.1 | 2.0 | 103.0 | 6.2 | 85.5 | 0.0 | -8.4 | 109.6 | 9.8 | 107.4 | 15.9 | Oct. | |
| 11月 | 98.4 | 0.0 | -2.6 | 104.7 | -4.0 | 98.2 | 0.2 | 85.5 | 0.0 | -8.4 | 113.3 | 3.4 | 107.6 | 17.5 | Nov. | |
| 12月 | 98.4 | 0.0 | -2.6 | 108.4 | 3.5 | 100.4 | 3.4 | 85.5 | 0.0 | -8.4 | 111.9 | -1.2 | 113.8 | 12.7 | Dec. | |
| 2019年 1月 | 98.4 | 0.0 | -1.9 | 101.6 | -6.3 | 90.1 | -0.9 | 85.3 | -0.2 | -4.5 | 103.0 | -8.0 | 100.0 | 1.6 | Jan. 2019 | |
| 2月 | 98.4 | 0.0 | -1.9 | 111.8 | 10.0 | 104.7 | 3.7 | 85.5 | 0.2 | -4.1 | 105.4 | 2.3 | 110.1 | 3.7 | Feb. | |
| 3月 | 98.5 | 0.1 | -1.7 | 108.8 | -2.7 | 111.2 | -1.3 | 85.6 | 0.1 | -0.2 | 99.9 | -5.2 | 130.7 | 2.5 | Mar. | |

〈輸送機械工業; Transport equipment〉

〈窯業・土石製品工業; Ceramics, stone and clay products〉

| | 生産能力(末) Production Capacity | | | 稼働率 Operating Ratio | | | | 生産能力(末) Production Capacity | | | 稼働率 Operating Ratio | | | | | |
|----------|---|------|--|---|--|---|--|---|------|--|--------------------------------------|---|-----------------------|--|-----------|--|
| | 原指数 Original Index | | | 季節調整済指数 Seasonally Adjusted Index | | 原指数 Original Index | | 原指数 Original Index | | | 季節調整済指数 Seasonally Adjusted Index | | 原指数 Original Index | | | |
| | 前月(期)比 %Change From Previous Month (Quarter) | | 前年 (同月期)比 %Change From Previous Year | 前月(期)比 %Change From Previous Month (Quarter) | 前年 (同月期)比 %Change From Previous Year | 前月(期)比 %Change From Previous Month (Quarter) | 前年 (同月期)比 %Change From Previous Year | 前月(期)比 %Change From Previous Month (Quarter) | | 前年 (同月期)比 %Change From Previous Year | | 前月(期)比 %Change From Previous Month (Quarter) | | 前年 (同月期)比 %Change From Previous Year | | |
| | | | | | | | | | | | | | | | | |
| 2016年 | 99.8 | | -0.2 | | | 98.9 | -1.1 | 98.3 | | -1.0 | | | 100.0 | 0.0 | C.Y. 2016 | |
| 2017年 | 99.3 | | -0.5 | | | 104.4 | 5.6 | 97.9 | | -0.4 | | | 103.2 | 3.2 | 2017 | |
| 2018年 | 99.3 | | 0.0 | | | 104.7 | 0.3 | 97.4 | | -0.5 | | | 103.3 | 0.1 | 2018 | |
| 2016年度 | 99.3 | | -0.5 | | | 100.4 | 1.3 | 97.4 | | -1.5 | | | 100.8 | 0.9 | F.Y. 2016 | |
| 2017年度 | 99.8 | | 0.5 | | | 104.2 | 3.8 | 97.9 | | 0.5 | | | 103.3 | 2.5 | 2017 | |
| 2018年度 | 99.1 | | -0.7 | | | 105.0 | 0.8 | 97.0 | | -0.9 | | | 102.3 | -1.0 | 2018 | |
| 2018年 I期 | 99.8 | 0.5 | 0.5 | 102.4 | -4.0 | 108.3 | -0.6 | 97.9 | 0.0 | 0.5 | 103.0 | 0.6 | 101.3 | 0.2 | Q1 2018 | |
| II期 | 99.3 | -0.5 | 0.0 | 106.2 | 3.7 | 100.7 | 1.1 | 97.8 | -0.1 | -0.1 | 103.6 | 0.6 | 101.1 | -0.3 | Q2 | |
| III期 | 99.3 | 0.0 | 0.0 | 102.5 | -3.5 | 99.4 | -2.5 | 97.8 | 0.0 | -0.1 | 102.5 | -1.1 | 102.7 | -1.5 | Q3 | |
| IV期 | 99.3 | 0.0 | 0.0 | 107.3 | 4.7 | 110.2 | 3.1 | 97.4 | -0.4 | -0.5 | 104.1 | 1.6 | 108.1 | 1.9 | Q4 | |
| 2019年 I期 | 99.1 | -0.2 | -0.7 | 104.9 | -2.2 | 109.6 | 1.2 | 97.0 | -0.4 | -0.9 | 99.1 | -4.8 | 97.3 | -3.9 | Q1 2019 | |
| 2018年 1月 | 99.8 | 0.5 | 0.1 | 96.5 | -11.8 | 95.0 | -2.7 | 97.9 | 0.0 | 0.6 | 102.4 | -0.1 | 98.9 | -0.7 | Jan. 2018 | |
| 2月 | 99.8 | 0.0 | 0.1 | 105.3 | 9.1 | 109.9 | 0.8 | 97.9 | 0.0 | 0.6 | 103.1 | 0.7 | 98.2 | 1.8 | Feb. | |
| 3月 | 99.8 | 0.0 | 0.5 | 105.4 | 0.1 | 120.0 | -0.2 | 97.9 | 0.0 | 0.5 | 103.4 | 0.3 | 106.9 | -0.3 | Mar. | |
| 4月 | 99.3 | -0.5 | 0.0 | 109.4 | 3.8 | 100.9 | 3.6 | 97.9 | 0.0 | -0.3 | 104.7 | 1.3 | 101.2 | 1.2 | Apr. | |
| 5月 | 99.3 | 0.0 | 0.0 | 105.1 | -3.9 | 94.4 | 4.8 | 97.9 | 0.0 | 0.0 | 103.3 | -1.3 | 98.4 | -0.7 | May | |
| 6月 | 99.3 | 0.0 | 0.0 | 104.1 | -1.0 | 106.7 | -4.2 | 97.8 | -0.1 | -0.1 | 102.9 | -0.4 | 103.6 | -1.3 | Jun. | |
| 7月 | 99.3 | 0.0 | 0.0 | 99.1 | -4.8 | 104.0 | -1.9 | 97.8 | 0.0 | -0.1 | 102.9 | 0.0 | 107.6 | -0.1 | Jul. | |
| 8月 | 99.3 | 0.0 | 0.0 | 104.9 | 5.9 | 89.6 | -0.4 | 97.8 | 0.0 | -0.1 | 102.2 | -0.7 | 98.2 | -2.2 | Aug. | |
| 9月 | 99.3 | 0.0 | 0.0 | 103.6 | -1.2 | 104.7 | -4.9 | 97.8 | 0.0 | -0.1 | 102.3 | 0.1 | 102.4 | -2.3 | Sep. | |
| 10月 | 99.3 | 0.0 | 0.0 | 106.8 | 3.1 | 114.1 | 6.0 | 97.8 | 0.0 | -0.1 | 104.1 | 1.8 | 110.3 | 1.8 | Oct. | |
| 11月 | 99.3 | 0.0 | 0.0 | 107.7 | 0.8 | 114.5 | 4.2 | 97.5 | -0.3 | -0.4 | 103.9 | -0.2 | 108.2 | 1.9 | Nov. | |
| 12月 | 99.3 | 0.0 | 0.0 | 107.4 | -0.3 | 102.1 | -1.0 | 97.4 | -0.1 | -0.5 | 104.4 | 0.5 | 105.8 | 1.8 | Dec. | |
| 2019年 1月 | 99.1 | -0.2 | -0.7 | 103.4 | -3.7 | 101.8 | 7.2 | 97.0 | -0.4 | -0.9 | 98.3 | -5.8 | 94.9 | -4.0 | Jan. 2019 | |
| 2月 | 99.1 | 0.0 | -0.7 | 106.9 | 3.4 | 111.5 | 1.5 | 97.0 | 0.0 | -0.9 | 98.4 | 0.1 | 93.7 | -4.6 | Feb. | |
| 3月 | 99.1 | 0.0 | -0.7 | 104.5 | -2.2 | 115.5 | -3.8 | 97.0 | 0.0 | -0.9 | 100.5 | 2.1 | 103.3 | -3.4 | Mar. | |

〈化学工業; Chemicals〉

〈石油・石炭製品工業; Petroleum and coal products〉

index.2015= 100

| | 生産能力(末) Production Capacity | | | 稼働率 Operating Ratio | | | | 生産能力(末) Production Capacity | | | 稼働率 Operating Ratio | | | | |
|----------|---|--|--------------------------------------|---|--|---|--|--------------------------------------|---|--|--------------------------------------|---|--|------|-----------|
| | 原指数 Original Index | | 季節調整済指数 Seasonally Adjusted Index | 原指数 Original Index | | 原指数 Original Index | | 季節調整済指数 Seasonally Adjusted Index | 原指数 Original Index | | 季節調整済指数 Seasonally Adjusted Index | 原指数 Original Index | | | |
| | 前月(期)比 %Change From Previous Month (Quarter) | 前年(同月期)比 %Change From Previous Year | | 前月(期)比 %Change From Previous Month (Quarter) | 前年(同月期)比 %Change From Previous Year | 前月(期)比 %Change From Previous Month (Quarter) | 前年(同月期)比 %Change From Previous Year | | 前月(期)比 %Change From Previous Month (Quarter) | 前年(同月期)比 %Change From Previous Year | | 前月(期)比 %Change From Previous Month (Quarter) | 前年(同月期)比 %Change From Previous Year | | |
| | | | | | | | | | | | | | | | |
| 2016年 | 98.6 | -0.7 | | | 99.7 | -0.3 | 96.7 | -3.1 | | | 104.1 | 4.1 | C.Y. 2016 | | |
| 2017年 | 99.0 | 0.4 | | | 103.7 | 4.0 | 90.0 | -6.9 | | | 109.3 | 5.0 | 2017 | | |
| 2018年 | 98.9 | -0.1 | | | 100.1 | -3.5 | 90.0 | 0.0 | | | 105.5 | -3.5 | 2018 | | |
| 2016年度 | 98.7 | 0.5 | | | 100.4 | -0.3 | 90.0 | -9.8 | | | 105.4 | 5.3 | F.Y. 2016 | | |
| 2017年度 | 98.9 | 0.2 | | | 103.3 | 2.9 | 90.0 | 0.0 | | | 109.2 | 3.6 | 2017 | | |
| 2018年度 | 98.9 | 0.0 | | | 100.2 | -3.0 | 90.0 | 0.0 | | | 104.8 | -4.0 | 2018 | | |
| 2018年 I期 | 98.9 | -0.1 | 0.2 | 101.0 | -2.2 | 102.4 | -1.4 | 90.0 | 0.0 | 0.0 | 106.9 | -3.9 | 111.5 | -0.4 | Q1 2018 |
| II期 | 98.9 | 0.0 | 0.5 | 98.3 | -2.7 | 94.2 | -5.8 | 90.0 | 0.0 | 0.0 | 103.7 | -3.0 | 98.0 | -4.8 | Q2 |
| III期 | 99.0 | 0.1 | 0.1 | 99.3 | 1.0 | 98.3 | -5.7 | 90.0 | 0.0 | 0.0 | 106.2 | 2.4 | 107.6 | -4.0 | Q3 |
| IV期 | 98.9 | -0.1 | -0.1 | 101.5 | 2.2 | 105.6 | -0.8 | 90.0 | 0.0 | 0.0 | 104.6 | -1.5 | 104.7 | -5.2 | Q4 |
| 2019年 I期 | 98.9 | 0.0 | 0.0 | 101.2 | -0.3 | 102.5 | 0.1 | 90.0 | 0.0 | 0.0 | 104.5 | -0.1 | 109.0 | -2.2 | Q1 2019 |
| 2018年 1月 | 99.0 | 0.0 | 0.3 | 101.7 | -0.8 | 106.9 | -0.2 | 90.0 | 0.0 | -6.9 | 107.5 | -3.2 | 116.3 | 0.8 | Jan. 2018 |
| 2月 | 99.0 | 0.0 | 0.4 | 99.8 | -1.9 | 97.9 | -2.5 | 90.0 | 0.0 | -6.9 | 105.4 | -2.0 | 103.3 | -1.5 | Feb. |
| 3月 | 98.9 | -0.1 | 0.2 | 101.5 | 1.7 | 102.4 | -1.7 | 90.0 | 0.0 | 0.0 | 107.8 | 2.3 | 115.0 | -0.6 | Mar. |
| 4月 | 98.8 | -0.1 | 0.3 | 100.6 | -0.9 | 101.2 | -1.7 | 90.0 | 0.0 | 0.0 | 106.3 | -1.4 | 107.8 | -1.1 | Apr. |
| 5月 | 98.9 | 0.1 | 0.5 | 99.8 | -0.8 | 95.8 | -4.6 | 90.0 | 0.0 | 0.0 | 104.6 | -1.6 | 99.5 | -4.2 | May |
| 6月 | 98.9 | 0.0 | 0.5 | 94.6 | -5.2 | 85.7 | -11.5 | 90.0 | 0.0 | 0.0 | 100.1 | -4.3 | 86.8 | -9.3 | Jun. |
| 7月 | 99.0 | 0.1 | 0.1 | 99.8 | 5.5 | 98.5 | -2.5 | 90.0 | 0.0 | 0.0 | 105.1 | 5.0 | 104.8 | -5.2 | Jul. |
| 8月 | 99.0 | 0.0 | 0.1 | 98.8 | -1.0 | 99.7 | -5.7 | 90.0 | 0.0 | 0.0 | 107.2 | 2.0 | 114.1 | -3.1 | Aug. |
| 9月 | 99.0 | 0.0 | 0.1 | 99.2 | 0.4 | 96.8 | -8.5 | 90.0 | 0.0 | 0.0 | 106.2 | -0.9 | 104.0 | -3.5 | Sep. |
| 10月 | 99.0 | 0.0 | 0.0 | 101.2 | 2.0 | 102.2 | -2.1 | 90.0 | 0.0 | 0.0 | 100.9 | -5.0 | 92.5 | -9.0 | Oct. |
| 11月 | 99.0 | 0.0 | 0.0 | 102.3 | 1.1 | 106.5 | 0.3 | 90.0 | 0.0 | 0.0 | 108.6 | 7.6 | 108.5 | -1.5 | Nov. |
| 12月 | 98.9 | -0.1 | -0.1 | 101.1 | -1.2 | 108.0 | -0.8 | 90.0 | 0.0 | 0.0 | 104.3 | -4.0 | 113.0 | -5.4 | Dec. |
| 2019年 1月 | 98.9 | 0.0 | -0.1 | 101.4 | 0.3 | 106.6 | -0.3 | 90.0 | 0.0 | 0.0 | 105.7 | 1.3 | 114.4 | -1.6 | Jan. 2019 |
| 2月 | 98.9 | 0.0 | -0.1 | 99.1 | -2.3 | 97.2 | -0.7 | 90.0 | 0.0 | 0.0 | 103.6 | -2.0 | 101.5 | -1.7 | Feb. |
| 3月 | 98.9 | 0.0 | 0.0 | 103.2 | 4.1 | 103.7 | 1.3 | 90.0 | 0.0 | 0.0 | 104.2 | 0.6 | 111.2 | -3.3 | Mar. |

〈パルプ・紙・紙加工品工業; Pulp, paper and paper products〉

〈その他工業; Other manufacturing〉

| | 生産能力(末) Production Capacity | | | 稼働率 Operating Ratio | | | | 生産能力(末) Production Capacity | | | 稼働率 Operating Ratio | | | | |
|----------|---|--|--------------------------------------|---|--|---|--|--------------------------------------|---|--|--------------------------------------|---|--|------|-----------|
| | 原指数 Original Index | | 季節調整済指数 Seasonally Adjusted Index | 原指数 Original Index | | 原指数 Original Index | | 季節調整済指数 Seasonally Adjusted Index | 原指数 Original Index | | 季節調整済指数 Seasonally Adjusted Index | 原指数 Original Index | | | |
| | 前月(期)比 %Change From Previous Month (Quarter) | 前年(同月期)比 %Change From Previous Year | | 前月(期)比 %Change From Previous Month (Quarter) | 前年(同月期)比 %Change From Previous Year | 前月(期)比 %Change From Previous Month (Quarter) | 前年(同月期)比 %Change From Previous Year | | 前月(期)比 %Change From Previous Month (Quarter) | 前年(同月期)比 %Change From Previous Year | | 前月(期)比 %Change From Previous Month (Quarter) | 前年(同月期)比 %Change From Previous Year | | |
| | | | | | | | | | | | | | | | |
| 2016年 | 101.6 | 0.6 | | | 99.5 | -0.5 | 97.3 | -2.6 | | | 98.7 | -1.3 | C.Y. 2016 | | |
| 2017年 | 101.5 | -0.1 | | | 100.9 | 1.4 | 96.5 | -0.8 | | | 99.2 | 0.5 | 2017 | | |
| 2018年 | 101.6 | 0.1 | | | 99.3 | -1.6 | 95.9 | -0.6 | | | 99.5 | 0.3 | 2018 | | |
| 2016年度 | 101.3 | 0.5 | | | 99.8 | -0.2 | 97.4 | -2.2 | | | 98.8 | -0.4 | F.Y. 2016 | | |
| 2017年度 | 101.5 | 0.2 | | | 100.3 | 0.5 | 96.1 | -1.3 | | | 99.7 | 0.9 | 2017 | | |
| 2018年度 | 101.6 | 0.1 | | | 99.0 | -1.3 | 95.5 | -0.6 | | | 99.2 | -0.5 | 2018 | | |
| 2018年 I期 | 101.5 | 0.0 | 0.2 | 98.8 | -2.3 | 98.5 | -2.1 | 96.1 | -0.4 | -1.3 | 100.3 | -0.1 | 99.7 | 1.8 | Q1 2018 |
| II期 | 101.1 | -0.4 | -0.4 | 100.0 | 1.2 | 99.7 | -1.3 | 96.0 | -0.1 | -1.2 | 99.9 | -0.4 | 100.5 | 0.6 | Q2 |
| III期 | 101.2 | 0.1 | -0.6 | 99.0 | -1.0 | 97.5 | -1.7 | 96.0 | 0.0 | -1.0 | 98.4 | -1.5 | 97.8 | -0.6 | Q3 |
| IV期 | 101.6 | 0.4 | 0.1 | 99.3 | 0.3 | 101.5 | -1.2 | 95.9 | -0.1 | -0.6 | 99.3 | 0.9 | 100.0 | -0.8 | Q4 |
| 2019年 I期 | 101.6 | 0.0 | 0.1 | 97.6 | -1.7 | 97.1 | -1.4 | 95.5 | -0.4 | -0.6 | 99.1 | -0.2 | 98.4 | -1.3 | Q1 2019 |
| 2018年 1月 | 101.4 | -0.1 | 0.1 | 98.7 | -2.2 | 94.3 | -1.5 | 96.3 | -0.2 | -1.2 | 100.2 | -0.9 | 93.4 | 2.0 | Jan. 2018 |
| 2月 | 101.4 | 0.0 | 0.1 | 97.8 | -0.9 | 93.8 | -2.8 | 96.3 | 0.0 | -1.1 | 99.9 | -0.3 | 98.4 | 1.4 | Feb. |
| 3月 | 101.5 | 0.1 | 0.2 | 99.9 | 2.1 | 107.4 | -1.9 | 96.1 | -0.2 | -1.3 | 100.9 | 1.0 | 107.3 | 2.2 | Mar. |
| 4月 | 101.0 | -0.5 | -0.6 | 99.9 | 0.0 | 101.4 | -1.0 | 96.1 | 0.0 | -1.1 | 99.9 | -1.0 | 102.1 | 0.8 | Apr. |
| 5月 | 101.1 | 0.1 | -0.5 | 101.3 | 1.4 | 100.1 | 0.4 | 96.0 | -0.1 | -1.2 | 100.0 | 0.1 | 97.4 | 0.8 | May |
| 6月 | 101.1 | 0.0 | -0.4 | 98.8 | -2.5 | 97.6 | -3.3 | 96.0 | 0.0 | -1.2 | 99.9 | -0.1 | 102.0 | 0.3 | Jun. |
| 7月 | 101.2 | 0.1 | -0.7 | 96.9 | -1.9 | 95.0 | -2.0 | 96.0 | 0.0 | -1.1 | 99.5 | -0.4 | 103.7 | 1.8 | Jul. |
| 8月 | 101.1 | -0.1 | -0.7 | 101.1 | 4.3 | 99.4 | -0.2 | 96.0 | 0.0 | -1.0 | 97.9 | -1.6 | 89.9 | -1.2 | Aug. |
| 9月 | 101.2 | 0.1 | -0.6 | 98.9 | -2.2 | 98.0 | -3.0 | 96.0 | 0.0 | -1.0 | 97.7 | -0.2 | 99.8 | -2.5 | Sep. |
| 10月 | 101.3 | 0.1 | -0.4 | 100.3 | 1.4 | 105.2 | 0.4 | 96.0 | 0.0 | -1.0 | 99.0 | 1.3 | 104.1 | -0.4 | Oct. |
| 11月 | 101.5 | 0.2 | -0.1 | 99.0 | -1.3 | 99.9 | -1.9 | 95.9 | -0.1 | -0.7 | 98.8 | -0.2 | 101.0 | -1.6 | Nov. |
| 12月 | 101.6 | 0.1 | 0.1 | 98.5 | -0.5 | 99.4 | -2.1 | 95.9 | 0.0 | -0.6 | 100.1 | 1.3 | 94.8 | -0.4 | Dec. |
| 2019年 1月 | 101.5 | -0.1 | 0.1 | 98.4 | -0.1 | 94.0 | -0.3 | 95.8 | -0.1 | -0.5 | 99.5 | -0.6 | 92.8 | -0.6 | Jan. 2019 |
| 2月 | 101.6 | 0.1 | 0.2 | 96.1 | -2.3 | 92.2 | -1.7 | 95.5 | -0.3 | -0.8 | 98.8 | -0.7 | 97.3 | -1.1 | Feb. |
| 3月 | 101.6 | 0.0 | 0.1 | 98.4 | 2.4 | 105.2 | -2.0 | 95.5 | 0.0 | -0.6 | 99.0 | 0.2 | 105.0 | -2.1 | Mar. |

〈繊維工業; Textiles〉

〈その他製品工業; Other products〉

index.2015= 100

| | 生産能力(末) Production Capacity | | | 稼働率 Operating Ratio | | | | 生産能力(末) Production Capacity | | | 稼働率 Operating Ratio | | | | |
|----------|---|--|--------------------------------------|---|--|---|--|---|--|--------------------------------------|---|--|-----------|------|-----------|
| | 原指数 Original Index | | 季節調整済指数 Seasonally Adjusted Index | 原指数 Original Index | | 原指数 Original Index | | 原指数 Original Index | | 季節調整済指数 Seasonally Adjusted Index | 原指数 Original Index | | | | |
| | 前月(期)比 %Change From Previous Month (Quarter) | 前年(同月期)比 %Change From Previous Year | | 前月(期)比 %Change From Previous Month (Quarter) | 前年(同月期)比 %Change From Previous Year | 前月(期)比 %Change From Previous Month (Quarter) | 前年(同月期)比 %Change From Previous Year | 前月(期)比 %Change From Previous Month (Quarter) | 前年(同月期)比 %Change From Previous Year | | 前月(期)比 %Change From Previous Month (Quarter) | 前年(同月期)比 %Change From Previous Year | | | |
| | | | | | | | | | | | | | | | |
| 2016年 | 98.1 | -1.6 | | | 98.7 | -1.3 | 96.6 | -3.4 | | | 98.7 | -1.3 | C.Y. 2016 | | |
| 2017年 | 96.3 | -1.8 | | | 97.7 | -1.0 | 96.7 | 0.1 | | | 100.3 | 1.6 | 2017 | | |
| 2018年 | 95.3 | -1.0 | | | 97.1 | -0.6 | 96.3 | -0.4 | | | 101.1 | 0.8 | 2018 | | |
| 2016年度 | 97.8 | -1.2 | | | 97.8 | -2.3 | 97.1 | -3.0 | | | 99.5 | 1.0 | F.Y. 2016 | | |
| 2017年度 | 95.9 | -1.9 | | | 97.8 | 0.0 | 96.4 | -0.7 | | | 101.0 | 1.5 | 2017 | | |
| 2018年度 | 94.6 | -1.4 | | | 96.6 | -1.2 | 96.1 | -0.3 | | | 101.0 | 0.0 | 2018 | | |
| 2018年 I期 | 95.9 | -0.4 | -1.9 | 97.6 | -0.5 | 97.1 | 0.7 | 96.4 | -0.3 | -0.7 | 102.2 | 0.8 | 101.5 | 2.6 | Q1 2018 |
| II期 | 95.5 | -0.4 | -2.0 | 98.2 | 0.6 | 98.8 | 0.2 | 96.4 | 0.0 | -0.6 | 101.4 | -0.8 | 101.7 | 0.9 | Q2 |
| III期 | 95.5 | 0.0 | -2.1 | 96.0 | -2.2 | 96.3 | -2.0 | 96.3 | -0.1 | -0.4 | 100.0 | -1.4 | 98.8 | 0.3 | Q3 |
| IV期 | 95.3 | -0.2 | -1.0 | 96.6 | 0.6 | 96.3 | -1.1 | 96.3 | 0.0 | -0.4 | 100.9 | 0.9 | 102.5 | -0.6 | Q4 |
| 2019年 I期 | 94.6 | -0.7 | -1.4 | 95.6 | -1.0 | 94.9 | -2.3 | 96.1 | -0.2 | -0.3 | 101.5 | 0.6 | 100.8 | -0.7 | Q1 2019 |
| 2018年 1月 | 96.2 | -0.1 | -1.7 | 97.3 | -1.4 | 96.1 | 0.7 | 96.4 | -0.3 | -0.7 | 102.1 | -0.2 | 91.5 | 2.9 | Jan. 2018 |
| 2月 | 96.2 | 0.0 | -1.5 | 97.0 | -0.3 | 94.2 | 0.0 | 96.4 | 0.0 | -0.7 | 101.9 | -0.2 | 101.4 | 2.4 | Feb. |
| 3月 | 95.9 | -0.3 | -1.9 | 98.5 | 1.5 | 101.0 | 1.5 | 96.4 | 0.0 | -0.7 | 102.5 | 0.6 | 111.6 | 2.6 | Mar. |
| 4月 | 95.7 | -0.2 | -1.7 | 97.5 | -1.0 | 97.7 | -1.0 | 96.4 | 0.0 | -0.6 | 101.8 | -0.7 | 105.2 | 2.0 | Apr. |
| 5月 | 95.6 | -0.1 | -1.8 | 100.1 | 2.7 | 101.4 | 3.4 | 96.4 | 0.0 | -0.6 | 100.8 | -1.0 | 94.7 | -0.9 | May |
| 6月 | 95.5 | -0.1 | -2.0 | 97.1 | -3.0 | 97.3 | -1.6 | 96.4 | 0.0 | -0.6 | 101.5 | 0.7 | 105.3 | 1.6 | Jun. |
| 7月 | 95.5 | 0.0 | -2.2 | 98.0 | 0.9 | 100.2 | 1.5 | 96.4 | 0.0 | -0.3 | 100.7 | -0.8 | 106.1 | 1.8 | Jul. |
| 8月 | 95.5 | 0.0 | -2.0 | 94.6 | -3.5 | 94.5 | -3.3 | 96.3 | -0.1 | -0.4 | 99.7 | -1.0 | 86.7 | 0.5 | Aug. |
| 9月 | 95.5 | 0.0 | -2.1 | 95.3 | 0.7 | 94.3 | -4.3 | 96.3 | 0.0 | -0.4 | 99.7 | 0.0 | 103.5 | -1.5 | Sep. |
| 10月 | 95.4 | -0.1 | -2.0 | 97.2 | 2.0 | 97.6 | 0.2 | 96.3 | 0.0 | -0.4 | 100.1 | 0.4 | 108.6 | -0.7 | Oct. |
| 11月 | 95.4 | 0.0 | -1.1 | 96.2 | -1.0 | 96.4 | -1.5 | 96.3 | 0.0 | -0.4 | 100.3 | 0.2 | 104.2 | -1.6 | Nov. |
| 12月 | 95.3 | -0.1 | -1.0 | 96.4 | 0.2 | 94.9 | -2.1 | 96.3 | 0.0 | -0.4 | 102.4 | 2.1 | 94.7 | 0.7 | Dec. |
| 2019年 1月 | 95.3 | 0.0 | -0.9 | 96.1 | -0.3 | 94.9 | -1.2 | 96.1 | -0.2 | -0.3 | 101.9 | -0.5 | 91.3 | -0.2 | Jan. 2019 |
| 2月 | 94.7 | -0.6 | -1.6 | 94.8 | -1.4 | 92.1 | -2.2 | 96.1 | 0.0 | -0.3 | 101.5 | -0.4 | 101.0 | -0.4 | Feb. |
| 3月 | 94.6 | -0.1 | -1.4 | 96.0 | 1.3 | 97.8 | -3.2 | 96.1 | 0.0 | -0.3 | 101.2 | -0.3 | 110.1 | -1.3 | Mar. |

〈製造工業(除. 機械工業); Manufacturing (excl. Machinery)〉

〈機械工業; Machinery industry〉

Machinery)〉

| | 生産能力(末) Production Capacity | | | 稼働率 Operating Ratio | | | | 生産能力(末) Production Capacity | | | 稼働率 Operating Ratio | | | | |
|----------|---|--|--------------------------------------|---|--|---|--|---|--|--------------------------------------|---|--|-----------|------|-----------|
| | 原指数 Original Index | | 季節調整済指数 Seasonally Adjusted Index | 原指数 Original Index | | 原指数 Original Index | | 原指数 Original Index | | 季節調整済指数 Seasonally Adjusted Index | 原指数 Original Index | | | | |
| | 前月(期)比 %Change From Previous Month (Quarter) | 前年(同月期)比 %Change From Previous Year | | 前月(期)比 %Change From Previous Month (Quarter) | 前年(同月期)比 %Change From Previous Year | 前月(期)比 %Change From Previous Month (Quarter) | 前年(同月期)比 %Change From Previous Year | 前月(期)比 %Change From Previous Month (Quarter) | 前年(同月期)比 %Change From Previous Year | | 前月(期)比 %Change From Previous Month (Quarter) | 前年(同月期)比 %Change From Previous Year | | | |
| | | | | | | | | | | | | | | | |
| 2016年 | 99.9 | 0.1 | | | 97.4 | -2.6 | 98.6 | -1.0 | | | 100.0 | 0.0 | C.Y. 2016 | | |
| 2017年 | 100.0 | 0.1 | | | 102.3 | 5.0 | 98.3 | -0.3 | | | 102.3 | 2.3 | 2017 | | |
| 2018年 | 99.1 | -0.9 | | | 104.3 | 2.0 | 98.1 | -0.2 | | | 101.4 | -0.9 | 2018 | | |
| 2016年度 | 99.6 | -0.2 | | | 98.4 | -0.3 | 98.2 | -1.0 | | | 100.4 | 0.3 | F.Y. 2016 | | |
| 2017年度 | 99.2 | -0.4 | | | 102.9 | 4.6 | 98.2 | 0.0 | | | 102.3 | 1.9 | 2017 | | |
| 2018年度 | 99.1 | -0.1 | | | 103.5 | 0.6 | 98.0 | -0.2 | | | 101.1 | -1.2 | 2018 | | |
| 2018年 I期 | 99.2 | -0.8 | -0.4 | 102.8 | -1.6 | 105.3 | 2.3 | 98.2 | -0.1 | 0.0 | 101.6 | -1.0 | 101.8 | 0.0 | Q1 2018 |
| II期 | 98.6 | -0.6 | -0.9 | 104.7 | 1.8 | 103.5 | 2.0 | 98.1 | -0.1 | -0.1 | 101.2 | -0.4 | 99.5 | -1.3 | Q2 |
| III期 | 98.7 | 0.1 | -1.0 | 102.9 | -1.7 | 101.6 | -0.2 | 98.2 | 0.1 | -0.2 | 100.6 | -0.6 | 100.2 | -2.3 | Q3 |
| IV期 | 99.1 | 0.4 | -0.9 | 106.6 | 3.6 | 106.8 | 3.6 | 98.1 | -0.1 | -0.2 | 102.0 | 1.4 | 104.2 | 0.0 | Q4 |
| 2019年 I期 | 99.1 | 0.0 | -0.1 | 100.8 | -5.4 | 102.2 | -2.9 | 98.0 | -0.1 | -0.2 | 100.4 | -1.6 | 100.4 | -1.4 | Q1 2019 |
| 2018年 1月 | 99.5 | -0.5 | -0.2 | 99.4 | -6.9 | 95.2 | 1.8 | 98.3 | 0.0 | -0.1 | 101.6 | -1.3 | 101.1 | 0.5 | Jan. 2018 |
| 2月 | 99.5 | 0.0 | -0.3 | 104.2 | 4.8 | 104.4 | 2.9 | 98.3 | 0.0 | -0.1 | 101.2 | -0.4 | 97.7 | -0.7 | Feb. |
| 3月 | 99.2 | -0.3 | -0.4 | 104.8 | 0.6 | 116.2 | 2.2 | 98.2 | -0.1 | 0.0 | 102.1 | 0.9 | 106.6 | 0.1 | Mar. |
| 4月 | 98.5 | -0.7 | -0.9 | 106.1 | 1.2 | 101.9 | 3.9 | 98.1 | -0.1 | -0.1 | 102.1 | 0.0 | 102.5 | 0.6 | Apr. |
| 5月 | 98.6 | 0.1 | -0.9 | 105.1 | -0.9 | 100.0 | 5.4 | 98.1 | 0.0 | -0.1 | 101.9 | -0.2 | 99.5 | -0.3 | May |
| 6月 | 98.6 | 0.0 | -0.9 | 102.9 | -2.1 | 108.6 | -2.6 | 98.1 | 0.0 | -0.1 | 99.5 | -2.4 | 96.4 | -4.2 | Jun. |
| 7月 | 98.6 | 0.0 | -1.1 | 101.1 | -1.7 | 107.2 | 1.1 | 98.2 | 0.1 | -0.2 | 100.8 | 1.3 | 101.9 | -0.8 | Jul. |
| 8月 | 98.6 | 0.0 | -1.1 | 104.4 | 3.3 | 95.8 | 1.2 | 98.2 | 0.0 | -0.2 | 100.6 | -0.2 | 98.9 | -2.4 | Aug. |
| 9月 | 98.7 | 0.1 | -1.0 | 103.1 | -1.2 | 101.8 | -2.8 | 98.2 | 0.0 | -0.2 | 100.5 | -0.1 | 99.7 | -3.9 | Sep. |
| 10月 | 99.1 | 0.4 | -0.8 | 106.8 | 3.6 | 110.4 | 6.8 | 98.2 | 0.0 | -0.2 | 101.9 | 1.4 | 104.4 | 0.0 | Oct. |
| 11月 | 99.3 | 0.2 | -0.6 | 106.9 | 0.1 | 108.8 | 4.5 | 98.2 | 0.0 | -0.1 | 102.5 | 0.6 | 105.0 | 0.8 | Nov. |
| 12月 | 99.1 | -0.2 | -0.9 | 106.2 | -0.7 | 101.2 | -0.6 | 98.1 | -0.1 | -0.2 | 101.7 | -0.8 | 103.2 | -0.7 | Dec. |
| 2019年 1月 | 99.1 | 0.0 | -0.4 | 99.7 | -6.1 | 95.5 | 0.3 | 98.1 | 0.0 | -0.2 | 100.7 | -1.0 | 100.2 | -0.9 | Jan. 2019 |
| 2月 | 99.1 | 0.0 | -0.4 | 102.2 | 2.5 | 102.4 | -1.9 | 98.1 | 0.0 | -0.2 | 99.5 | -1.2 | 96.1 | -1.6 | Feb. |
| 3月 | 99.1 | 0.0 | -0.1 | 100.4 | -1.8 | 108.8 | -6.4 | 98.0 | -0.1 | -0.2 | 100.9 | 1.4 | 104.9 | -1.6 | Mar. |

業種別 能力・稼働率 指数

Indices of Production Capacity and Operating Ratio (Classification by Industry)

| | 生産能力(末) Production Capacity | | | | | 稼働率 Operating Ratio | | | | | | | Classification |
|---------------|--------------------------------|------------|---------------------------------------|--|------------------------------|--------------------------------------|------------|---------------------------------------|------------------------------|-------------------------|------------|--|---|
| | 原 指 数 Original Index | | | | | 季節調整済指数 Seasonally Adjusted Index | | | | 原 指 数 Original Index | | | |
| | 2月 Feb. | 3月 Mar. | 前月比 %Change From Previous Month | 前年同月比 %Change From Previous Year | 寄与度 Contribution ratio | 2月 Feb. | 3月 Mar. | 前月比 %Change From Previous Month | 寄与度 Contribution ratio | 2月 Feb. | 3月 Mar. | 前年同月比 %Change From Previous Year | |
| 製造工業 | 98.7 | 98.7 | 0.0 | -0.1 | | 101.0 | 100.6 | -0.4 | | 99.8 | 107.2 | -4.5 | Manufacturing |
| 鉄鋼・非鉄金属工業 | 98.6 | 98.6 | 0.0 | 0.3 | 0.00 | 97.5 | 100.0 | 2.6 | 0.20 | 93.6 | 104.4 | -4.0 | Iron, steel and Non-ferrous metals |
| 鉄鋼業 | 97.7 | 97.7 | 0.0 | 0.3 | 0.00 | 96.1 | 100.6 | 4.7 | 0.25 | 91.4 | 105.1 | -2.5 | Iron and steel |
| 非鉄金属工業 | 100.4 | 100.4 | 0.0 | 0.5 | 0.00 | 100.1 | 98.9 | -1.2 | -0.03 | 98.3 | 103.0 | -6.8 | Non-ferrous metals |
| 金属製品工業 | 98.9 | 98.9 | 0.0 | -0.8 | 0.00 | 104.7 | 98.5 | -5.9 | -0.27 | 97.5 | 107.4 | -3.8 | Fabricated metals |
| 生産用機械工業 | 104.5 | 104.7 | 0.2 | 2.9 | 0.02 | 93.3 | 93.1 | -0.2 | -0.02 | 91.9 | 103.6 | -10.1 | Production machinery |
| 汎用・業務用機械工業 | 96.9 | 96.3 | -0.6 | 0.4 | -0.04 | 105.7 | 107.7 | 1.9 | 0.14 | 106.9 | 113.3 | -5.5 | General-purpose and business oriented machinery |
| 電子部品・デバイス工業 | 106.1 | 106.1 | 0.0 | -0.8 | 0.00 | 84.5 | 81.0 | -4.1 | -0.26 | 77.9 | 79.6 | -21.5 | Electronic parts and devices |
| 電気・情報通信機械工業 | 93.6 | 93.7 | 0.1 | -1.2 | 0.01 | 109.7 | 105.8 | -3.6 | -0.43 | 106.3 | 116.8 | -0.2 | Electrical machinery, and information and communication electronics equipment |
| 電気機械工業 | 98.4 | 98.5 | 0.1 | -1.7 | 0.01 | 111.8 | 108.8 | -2.7 | -0.23 | 104.7 | 111.2 | -1.3 | Electrical machinery |
| 情報通信機械工業 | 85.5 | 85.6 | 0.1 | -0.2 | 0.01 | 105.4 | 99.9 | -5.2 | -0.17 | 110.1 | 130.7 | 2.5 | Information and communication electronics equipment |
| 輸送機械工業 | 99.1 | 99.1 | 0.0 | -0.7 | 0.00 | 106.9 | 104.5 | -2.2 | -0.56 | 111.5 | 115.5 | -3.8 | Transport equipment |
| 窯業・土石製品工業 | 97.0 | 97.0 | 0.0 | -0.9 | 0.00 | 98.4 | 100.5 | 2.1 | 0.09 | 93.7 | 103.3 | -3.4 | Ceramics, stone and clay products |
| 化学工業 | 98.9 | 98.9 | 0.0 | 0.0 | 0.00 | 99.1 | 103.2 | 4.1 | 0.58 | 97.2 | 103.7 | 1.3 | Chemicals |
| 石油・石炭製品工業 | 90.0 | 90.0 | 0.0 | 0.0 | 0.00 | 103.6 | 104.2 | 0.6 | 0.01 | 101.5 | 111.2 | -3.3 | Petroleum and coal products |
| パルプ・紙・紙加工品工業 | 101.6 | 101.6 | 0.0 | 0.1 | 0.00 | 96.1 | 98.4 | 2.4 | 0.07 | 92.2 | 105.2 | -2.0 | Pulp, paper and paper products |
| その他工業 | 95.5 | 95.5 | 0.0 | -0.6 | 0.00 | 98.8 | 99.0 | 0.2 | 0.01 | 97.3 | 105.0 | -2.1 | Other manufacturing |
| 繊維工業 | 94.7 | 94.6 | -0.1 | -1.4 | 0.00 | 94.8 | 96.0 | 1.3 | 0.03 | 92.1 | 97.8 | -3.2 | Textiles |
| その他製品工業 | 96.1 | 96.1 | 0.0 | -0.3 | 0.00 | 101.5 | 101.2 | -0.3 | -0.01 | 101.0 | 110.1 | -1.3 | Other products |
| 《参考》 | | | | | | | | | | | | | |
| 機械工業 | 99.1 | 99.1 | 0.0 | -0.1 | 0.00 | 102.2 | 100.4 | -1.8 | -1.05 | 102.4 | 108.8 | -6.4 | Machinery industry |
| 製造工業(除. 機械工業) | 98.1 | 98.0 | -0.1 | -0.2 | -0.04 | 99.5 | 100.9 | 1.4 | 0.57 | 96.1 | 104.9 | -1.6 | Manufacturing (excl. Machinery) |