

2022年4月の製造工業生産能力指数・稼働率指数の動向  
Indices of Production Capacity and Operating Ratio for April, 2022

Index. 2015 = 100

| 生産能力<br>Production<br>Capacity | 原 指 数<br>Original Index               |  |
|--------------------------------|---------------------------------------|--|
|                                | 前月比(%)<br>%Change from Previous Month | 前年同月比(%)<br>%Change from Previous Year |
| 95.4                           | -0.4 (2か月ぶり)                          | -1.2 (52か月連続)                          |
| 稼働率<br>Operating<br>Ratio      | 季節調整済指数<br>Seasonally Adjusted Index  | 原 指 数<br>Original Index                |
|                                | 前月比(%)<br>%Change from Previous Month | 前年同月比(%)<br>%Change from Previous Year |
| 92.7                           | 0.0 (横ばい)                             | 91.5<br>-6.6 (2か月連続)                   |

- (1) 4月の製造工業生産能力指数は、95.4で前月比-0.4%の低下であった。業種別にみると、電気・情報通信機械工業同-1.3%、生産用機械工業同-0.8%、鉄鋼・非鉄金属工業同-1.0%等が低下し、汎用・業務用機械工業同0.7%、輸送機械工業同0.2%、金属製品工業同0.2%等が上昇した。
- (2) 4月の製造工業稼働率指数は、92.7で前月比0.0%の横ばいであった。業種別にみると、電子部品・デバイス工業同14.9%、化学工業同1.3%、窯業・土石製品工業同3.4%等が上昇し、その他工業同-5.4%、生産用機械工業同-2.5%、電気・情報通信機械工業同-0.8%等が低下した。

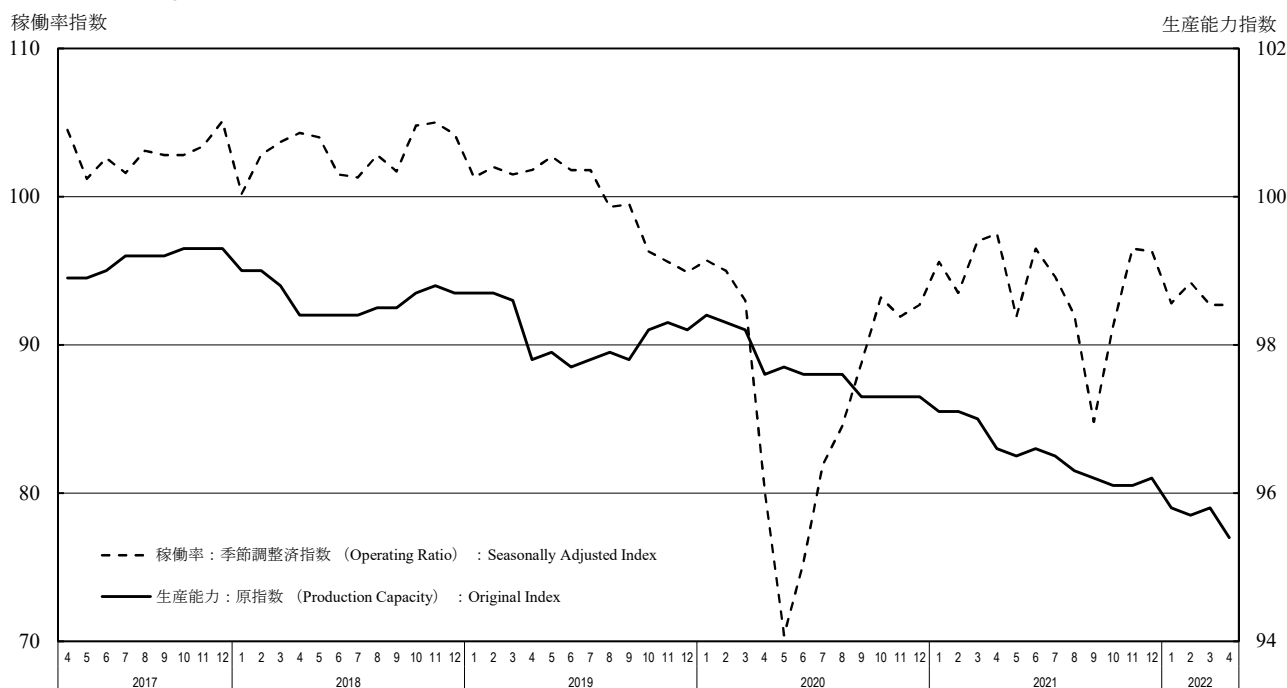
**製造工業生産能力指数・稼働率指数の時系列表**  
 Historical Data for Indices of Production Capacity and Operating Ratio

index.2015= 100

| 年 月        | 生産能力(末) Production Capacity                    |  |  | 稼働率 Operating Ratio                            |  |                    |       | Year and Month |
|------------|--|--|--|--|--|--------------------|-------|----------------|
|            | 原指数 Original Index                             |  | 前年(同月期)比<br>%Change From Previous Year | 季節調整済指数 Seasonally Adjusted Index              |  | 原指数 Original Index |       |                |
|            | 前月(期)比<br>%Change From Previous Month(Quarter) | 前月(期)比<br>%Change From Previous Month(Quarter) |  | 前月(期)比<br>%Change From Previous Month(Quarter) | 前年(同月期)比<br>%Change From Previous Year |                    |       |                |
| 2019 年     | 98.2   |  | -0.5                                   |  |  | 99.9               | -3.1  | C.Y. 2019      |
| 2020       | 97.3   |  | -0.9                                   |  |  | 87.1               | -12.8 | C.Y. 2020      |
| 2021       | 96.2   |  | -1.1                                   |  |  | 94.1               | 8.0   | C.Y. 2021      |
| 2019 年度    | 98.2   |  | -0.4                                   |  |  | 98.2               | -4.2  | F.Y. 2019      |
| 2020       | 97.0   |  | -1.2                                   |  |  | 87.3               | -11.1 | F.Y. 2020      |
| 2021       | 95.8   |  | -1.2                                   |  |  | 93.5               | 7.1   | F.Y. 2021      |
| 2021 年 I 期 | 97.0   | -0.3   | -1.2                                   | 95.4   | 3.0                                    | 96.0               | 1.2   | Q1 2021        |
| II 期       | 96.6   | -0.4   | -1.0                                   | 95.3   | -0.1                                   | 94.8               | 27.9  | Q2 2021        |
| III 期      | 96.2   | -0.4   | -1.1                                   | 90.5   | -5.0                                   | 90.1               | 5.6   | Q3 2021        |
| IV 期       | 96.2   | 0.0  | -1.1                                   | 94.7   | 4.6                                    | 95.3               | 1.5   | Q4 2021        |
| 2022 年 I 期 | 95.8   | -0.4   | -1.2                                   | 93.2   | -1.6                                   | 93.8               | -2.3  | Q1 2022        |
| 2021 年 2月  | 97.1   | 0.0  | -1.2                                   | 93.5   | -2.2                                   | 91.4               | -1.0  | Feb. 2021      |
| 3月         | 97.0   | -0.1   | -1.2                                   | 97.0   | 3.7                                    | 106.1              | 7.0   | Mar. 2021      |
| 4月         | 96.6   | -0.4   | -1.0                                   | 97.5   | 0.5                                    | 98.0               | 23.6  | Apr. 2021      |
| 5月         | 96.5   | -0.1   | -1.2                                   | 91.9   | -5.7                                   | 86.5               | 30.9  | May 2021       |
| 6月         | 96.6   | 0.1  | -1.0                                   | 96.5   | 5.0                                    | 100.0              | 29.9  | Jun. 2021      |
| 7月         | 96.5   | -0.1   | -1.1                                   | 94.6   | -2.0                                   | 98.5               | 13.6  | Jul. 2021      |
| 8月         | 96.3   | -0.2   | -1.3                                   | 92.0   | -2.7                                   | 83.9               | 9.2   | Aug. 2021      |
| 9月         | 96.2   | -0.1   | -1.1                                   | 84.8   | -7.8                                   | 87.8               | -5.1  | Sep. 2021      |
| 10月        | 96.1   | -0.1   | -1.2                                   | 91.3   | 7.7                                    | 89.9               | -5.7  | Oct. 2021      |
| 11月        | 96.1   | 0.0  | -1.2                                   | 96.5   | 5.7                                    | 98.7               | 6.7   | Nov. 2021      |
| 12月        | 96.2   | 0.1  | -1.1                                   | 96.3   | -0.2                                   | 97.3               | 3.7   | Dec. 2021      |
| 2022 年 1月  | 95.8   | -0.4   | -1.3                                   | 92.8   | -3.6                                   | 88.0               | -2.9  | Jan. 2022      |
| 2月         | 95.7   | -0.1   | -1.4                                   | 94.2   | 1.5                                    | 92.1               | 0.8   | Feb. 2022      |
| 3月         | 95.8   | 0.1  | -1.2                                   | 92.7   | -1.6                                   | 101.4              | -4.4  | Mar. 2022      |
| 4月         | 95.4   | -0.4   | -1.2                                   | 92.7   | 0.0                                    | 91.5               | -6.6  | Apr. 2022      |

**製造工業生産能力指数・稼働率指数の推移(グラフ)**  
 Historical Data (Graph) for Indices of Production Capacity and Operating Ratio

(2015 average=100)



〈鉄鋼・非鉄金属工業; Iron, steel and Non-ferrous metals〉

〈鉄鋼業; Iron and steel〉

index.2015= 100

|          | 生産能力(末)<br>Production Capacity                  |  |                                      | 稼働率<br>Operating Ratio                          |  |   |  | 生産能力(末)<br>Production Capacity       |   |  | 稼働率<br>Operating Ratio               |                       |           |      |           |
|----------|---|--|--------------------------------------|---|--|---|--|--------------------------------------|---|--|--------------------------------------|-----------------------|-----------|------|-----------|
|          | 原指数<br>Original Index                           |  | 季節調整済指数<br>Seasonally Adjusted Index | 原指数<br>Original Index                           |  | 原指数<br>Original Index                           |  | 季節調整済指数<br>Seasonally Adjusted Index | 原指数<br>Original Index                           |  | 季節調整済指数<br>Seasonally Adjusted Index | 原指数<br>Original Index |           |      |           |
|          | 前月(期)比<br>%Change From Previous Month (Quarter) | 前年(同月期)比<br>%Change From Previous Year |                                      | 前月(期)比<br>%Change From Previous Month (Quarter) | 前年(同月期)比<br>%Change From Previous Year | 前月(期)比<br>%Change From Previous Month (Quarter) | 前年(同月期)比<br>%Change From Previous Year |                                      | 前月(期)比<br>%Change From Previous Month (Quarter) | 前年(同月期)比<br>%Change From Previous Year |                                      |                       |           |      |           |
|          |   |  |                                      |   |  |   |  |                                      |   |  |                                      |                       |           |      |           |
| 2019年    | 97.7  |  | -0.8                                 |   | 98.0                                   | -4.7  | 96.5                                   |                                      | -1.1  |  | 97.2                                 | -4.5                  | C.Y. 2019 |      |           |
| 2020年    | 95.8  |  | -1.9                                 |   | 85.9                                   | -12.3   | 93.7                                   |                                      | -2.9  |  | 83.4                                 | -14.2                 | 2020      |      |           |
| 2021年    | 95.4  |  | -0.4                                 |   | 97.1                                   | 13.0  | 93.5                                   |                                      | -0.2  |  | 97.0                                 | 16.3                  | 2021      |      |           |
| 2019年度   | 97.7  |  | -0.9                                 |   | 97.2                                   | -4.3  | 96.5                                   |                                      | -1.2  |  | 96.3                                 | -4.2                  | F.Y. 2019 |      |           |
| 2020年度   | 96.2  |  | -1.5                                 |   | 86.0                                   | -11.5   | 94.2                                   |                                      | -2.4  |  | 83.7                                 | -13.1                 | 2020      |      |           |
| 2021年度   | 95.4  |  | -0.8                                 |   | 96.7                                   | 12.4  | 93.5                                   |                                      | -0.7  |  | 96.4                                 | 15.2                  | 2021      |      |           |
| 2021年 I期 | 96.2  | 0.4                                    | -1.5                                 | 95.9  | 3.9                                    | 96.0  | 0.4                                    | 94.2                                 | 0.5   | -2.4                                   | 95.0                                 | 7.0                   | 95.8      | 0.9  | Q1 2021   |
| II期      | 95.9  | -0.3                                   | 0.1                                  | 96.9  | 1.0                                    | 97.7  | 28.9                                   | 94.1                                 | -0.1  | 0.4                                    | 96.7                                 | 1.8                   | 97.5      | 33.9 | Q2        |
| III期     | 96.2  | 0.3                                    | 0.1                                  | 97.6  | 0.7                                    | 96.4  | 20.7                                   | 94.7                                 | 0.6   | 0.6                                    | 98.2                                 | 1.6                   | 97.2      | 27.1 | Q3        |
| IV期      | 95.4  | -0.8                                   | -0.4                                 | 97.9  | 0.3                                    | 98.2  | 6.4                                    | 93.5                                 | -1.3  | -0.2                                   | 98.3                                 | 0.1                   | 97.6      | 9.2  | Q4        |
| 2022年 I期 | 95.4  | 0.0                                    | -0.8                                 | 94.3  | -3.7                                   | 94.4  | -1.7                                   | 93.5                                 | 0.0   | -0.7                                   | 92.5                                 | -5.9                  | 93.3      | -2.6 | Q1 2022   |
| 2021年 2月 | 96.2  | 0.0                                    | -1.5                                 | 95.3  | -0.4                                   | 90.7  | -3.7                                   | 94.3                                 | 0.0   | -2.3                                   | 94.8                                 | 0.6                   | 90.2      | -2.8 | Feb. 2021 |
| 3月       | 96.2  | 0.0                                    | -1.5                                 | 96.8  | 1.6                                    | 103.1   | 6.3                                    | 94.2                                 | -0.1  | -2.4                                   | 96.0                                 | 1.3                   | 101.8     | 7.0  | Mar.      |
| 4月       | 95.9  | -0.3                                   | 0.1                                  | 97.0  | 0.2                                    | 97.0  | 17.6                                   | 94.1                                 | -0.1  | 0.4                                    | 96.0                                 | 0.0                   | 95.1      | 19.2 | Apr.      |
| 5月       | 95.9  | 0.0                                    | 0.1                                  | 96.4  | -0.6                                   | 96.5  | 32.7                                   | 94.1                                 | 0.0   | 0.4                                    | 96.8                                 | 0.8                   | 99.0      | 38.8 | May       |
| 6月       | 95.9  | 0.0                                    | 0.1                                  | 97.3  | 0.9                                    | 99.7  | 37.9                                   | 94.1                                 | 0.0   | 0.4                                    | 97.3                                 | 0.5                   | 98.3      | 45.8 | Jun.      |
| 7月       | 96.3  | 0.4                                    | 0.2                                  | 98.0  | 0.7                                    | 99.1  | 28.5                                   | 94.7                                 | 0.6   | 0.6                                    | 98.5                                 | 1.2                   | 98.0      | 36.7 | Jul.      |
| 8月       | 96.3  | 0.0                                    | 0.2                                  | 97.0  | -1.0                                   | 93.2  | 19.0                                   | 94.7                                 | 0.0   | 0.6                                    | 96.7                                 | -1.8                  | 96.4      | 22.3 | Aug.      |
| 9月       | 96.2  | -0.1                                   | 0.1                                  | 97.9  | 0.9                                    | 97.0  | 15.2                                   | 94.7                                 | 0.0   | 0.6                                    | 99.5                                 | 2.9                   | 97.1      | 22.8 | Sep.      |
| 10月      | 95.4  | -0.8                                   | -0.4                                 | 96.6  | -1.3                                   | 98.4  | 6.6                                    | 93.5                                 | -1.3  | -0.2                                   | 97.5                                 | -2.0                  | 98.5      | 11.9 | Oct.      |
| 11月      | 95.4  | 0.0                                    | -0.4                                 | 98.7  | 2.2                                    | 99.5  | 7.8                                    | 93.5                                 | 0.0   | -0.2                                   | 99.1                                 | 1.6                   | 98.2      | 9.8  | Nov.      |
| 12月      | 95.4  | 0.0                                    | -0.4                                 | 98.3  | -0.4                                   | 96.7  | 4.9                                    | 93.5                                 | 0.0   | -0.2                                   | 98.3                                 | -0.8                  | 96.2      | 5.9  | Dec.      |
| 2022年 1月 | 95.4  | 0.0                                    | -0.8                                 | 94.5  | -3.9                                   | 93.2  | -1.2                                   | 93.5                                 | 0.0   | -0.8                                   | 92.8                                 | -5.6                  | 94.1      | -1.5 | Jan. 2022 |
| 2月       | 95.4  | 0.0                                    | -0.8                                 | 93.9  | -0.6                                   | 89.4  | -1.4                                   | 93.5                                 | 0.0   | -0.8                                   | 92.6                                 | -0.2                  | 88.1      | -2.3 | Feb.      |
| 3月       | 95.4  | 0.0                                    | -0.8                                 | 94.4  | 0.5                                    | 100.5   | -2.5                                   | 93.5                                 | 0.0   | -0.7                                   | 92.1                                 | -0.5                  | 97.7      | -4.0 | Mar.      |
| 4月       | 94.4  | -1.0                                   | -1.6                                 | 94.7  | 0.3                                    | 94.3  | -2.8                                   | 92.0                                 | -1.6  | -2.2                                   | 91.9                                 | -0.2                  | 91.2      | -4.1 | Apr.      |

〈非鉄金属工業; Non-ferrous metals〉

〈金属製品工業; Fabricated metals〉

|          | 生産能力(末)<br>Production Capacity                  |  |                                      | 稼働率<br>Operating Ratio                          |  |   |  | 生産能力(末)<br>Production Capacity       |   |  | 稼働率<br>Operating Ratio               |                       |           |      |           |
|----------|---|--|--------------------------------------|---|--|---|--|--------------------------------------|---|--|--------------------------------------|-----------------------|-----------|------|-----------|
|          | 原指数<br>Original Index                           |  | 季節調整済指数<br>Seasonally Adjusted Index | 原指数<br>Original Index                           |  | 原指数<br>Original Index                           |  | 季節調整済指数<br>Seasonally Adjusted Index | 原指数<br>Original Index                           |  | 季節調整済指数<br>Seasonally Adjusted Index | 原指数<br>Original Index |           |      |           |
|          | 前月(期)比<br>%Change From Previous Month (Quarter) | 前年(同月期)比<br>%Change From Previous Year |                                      | 前月(期)比<br>%Change From Previous Month (Quarter) | 前年(同月期)比<br>%Change From Previous Year | 前月(期)比<br>%Change From Previous Month (Quarter) | 前年(同月期)比<br>%Change From Previous Year |                                      | 前月(期)比<br>%Change From Previous Month (Quarter) | 前年(同月期)比<br>%Change From Previous Year |                                      |                       |           |      |           |
|          |   |  |                                      |   |  |   |  |                                      |   |  |                                      |                       |           |      |           |
| 2019年    | 100.2   |  | -0.1                                 |   | 99.7                                   | -4.8  | 99.7                                   |                                      | 0.7   |  | 98.8                                 | -4.4                  | C.Y. 2019 |      |           |
| 2020年    | 100.0   |  | -0.2                                 |   | 91.2                                   | -8.5  | 98.6                                   |                                      | -1.1  |  | 90.0                                 | -8.9                  | 2020      |      |           |
| 2021年    | 99.1  |  | -0.9                                 |   | 97.2                                   | 6.6   | 98.5                                   |                                      | -0.1  |  | 93.2                                 | 3.6                   | 2021      |      |           |
| 2019年度   | 100.1   |  | -0.3                                 |   | 99.2                                   | -4.5  | 99.3                                   |                                      | 0.4   |  | 97.2                                 | -6.2                  | F.Y. 2019 |      |           |
| 2020年度   | 100.0   |  | -0.1                                 |   | 91.0                                   | -8.3  | 98.4                                   |                                      | -0.9  |  | 89.5                                 | -7.9                  | 2020      |      |           |
| 2021年度   | 99.2  |  | -0.8                                 |   | 97.3                                   | 6.9   | 98.5                                   |                                      | 0.1   |  | 92.8                                 | 3.7                   | 2021      |      |           |
| 2021年 I期 | 100.0   | 0.0                                    | -0.1                                 | 97.1  | 2.0                                    | 96.5  | -0.8                                   | 98.4                                 | -0.2  | -0.9                                   | 93.3                                 | 5.8                   | 91.5      | -2.0 | Q1 2021   |
| II期      | 99.5  | -0.5                                   | -0.6                                 | 97.5  | 0.4                                    | 98.2  | 19.5                                   | 98.4                                 | 0.0   | -1.0                                   | 94.1                                 | 0.9                   | 95.8      | 9.7  | Q2        |
| III期     | 99.2  | -0.3                                   | -0.9                                 | 96.9  | -0.6                                   | 94.9  | 9.1                                    | 98.3                                 | -0.1  | -0.3                                   | 92.3                                 | -1.9                  | 94.2      | 3.4  | Q3        |
| IV期      | 99.1  | -0.1                                   | -0.9                                 | 97.3  | 0.4                                    | 99.4  | 1.1                                    | 98.5                                 | 0.2   | -0.1                                   | 92.7                                 | 0.4                   | 91.1      | 3.2  | Q4        |
| 2022年 I期 | 99.2  | 0.1                                    | -0.8                                 | 97.3  | 0.0                                    | 96.6  | 0.1                                    | 98.5                                 | 0.0   | 0.1                                    | 92.3                                 | -0.4                  | 90.2      | -1.4 | Q1 2022   |
| 2021年 2月 | 100.1   | 0.0                                    | 0.0                                  | 93.4  | -4.8                                   | 91.6  | -5.7                                   | 98.4                                 | 0.0   | -0.7                                   | 93.1                                 | 0.4                   | 88.3      | -5.5 | Feb. 2021 |
| 3月       | 100.0   | -0.1                                   | -0.1                                 | 99.9  | 7.0                                    | 105.9   | 5.0                                    | 98.4                                 | 0.0   | -0.9                                   | 94.2                                 | 1.2                   | 103.6     | 2.7  | Mar.      |
| 4月       | 99.5  | -0.5                                   | -0.5                                 | 99.8  | -0.1                                   | 100.9   | 14.4                                   | 98.4                                 | 0.0   | -0.8                                   | 93.7                                 | -0.5                  | 96.6      | 5.2  | Apr.      |
| 5月       | 99.5  | 0.0                                    | -0.6                                 | 93.7  | -6.1                                   | 91.2  | 20.5                                   | 98.4                                 | 0.0   | -0.8                                   | 94.4                                 | 0.7                   | 92.3      | 14.0 | May       |
| 6月       | 99.5  | 0.0                                    | -0.6                                 | 99.0  | 5.7                                    | 102.6   | 23.9                                   | 98.4                                 | 0.0   | -1.0                                   | 94.2                                 | -0.2                  | 98.5      | 10.7 | Jun.      |
| 7月       | 99.5  | 0.0                                    | -0.6                                 | 98.3  | -0.7                                   | 101.4   | 14.6                                   | 98.4                                 | 0.0   | -0.3                                   | 92.4                                 | -1.9                  | 99.7      | 3.2  | Jul.      |
| 8月       | 99.5  | 0.0                                    | -0.6                                 | 97.8  | -0.5                                   | 86.5  | 11.8                                   | 98.4                                 | 0.0   | -0.3                                   | 92.0                                 | -0.4                  | 87.7      | 4.3  | Aug.      |
| 9月       | 99.2  | -0.3                                   | -0.9                                 | 94.5  | -3.4                                   | 96.8  | 1.8                                    | 98.3                                 | -0.1  | -0.3                                   | 92.6                                 | 0.7                   | 95.3      | 3.0  | Sep.      |
| 10月      | 99.1  | -0.1                                   | -1.0                                 | 96.3  | 1.9                                    | 98.3  | -3.1                                   | 98.4                                 | 0.1   | -0.2                                   | 89.9                                 | -2.9                  | 89.8      | -2.0 | Oct.      |
| 11月      | 99.1  | 0.0                                    | -1.0                                 | 98.3  | 2.1                                    | 102.1   | 4.0                                    | 98.4                                 | 0.0   | -0.2                                   | 94.5                                 | 5.1                   | 94.0      | 7.4  | Nov.      |
| 12月      | 99.1  | 0.0                                    | -0.9                                 | 97.3  | -1.0                                   | 97.7  | 2.5                                    | 98.5                                 | 0.1   | -0.1                                   | 93.8                                 | -0.7                  | 89.4      | 4.2  | Dec.      |
| 2022年 1月 | 99.2  | 0.1                                    | -0.9                                 | 97.5  | 0.2                                    | 91.4  | -0.5                                   | 98.4                                 | -0.1  | 0.0                                    | 96.0                                 | 2.3                   | 85.6      | 3.5  | Jan. 2022 |
| 2月       | 99.2  | 0.0                                    | -0.9                                 | 93.8  | -3.8                                   | 92.0  | 0.4                                    | 98.6                                 | 0.2   | 0.2                                    | 92.3                                 | -3.9                  | 87.6      | -0.8 | Feb.      |
| 3月       | 99.2  | 0.0                                    | -0.8                                 | 100.5   | 7.1                                    | 106.5   | 0.6                                    | 98.5                                 | -0.1  | 0.1                                    | 88.7                                 | -3.9                  | 97.5      | -5.9 | Mar.      |
| 4月       | 99.2  | 0.0                                    | -0.3                                 | 100.8   | 0.3                                    | 100.7   | -0.2                                   | 98.7                                 | 0.2   | 0.3                                    | 90.8                                 | 2.4                   | 92.7      | -4.0 | Apr.      |

〈生産用機械工業; Production machinery〉

〈汎用・業務用機械工業; General-purpose and business oriented machinery〉

index.2015= 100

|          | 生産能力(末)<br>Production Capacity                  |  |                                      | 稼働率<br>Operating Ratio                          |  |   |  | 生産能力(末)<br>Production Capacity       |   |  | 稼働率<br>Operating Ratio |       |           |      |           |
|----------|---|--|--------------------------------------|---|--|---|--|--------------------------------------|---|--|------------------------|-------|-----------|------|-----------|
|          | 原指数<br>Original Index                           |  | 季節調整済指数<br>Seasonally Adjusted Index | 原指数<br>Original Index                           |  | 原指数<br>Original Index                           |  | 季節調整済指数<br>Seasonally Adjusted Index | 原指数<br>Original Index                           |  |                        |       |           |      |           |
|          | 前月(期)比<br>%Change From Previous Month (Quarter) | 前年(同月期)比<br>%Change From Previous Year |                                      | 前月(期)比<br>%Change From Previous Month (Quarter) | 前年(同月期)比<br>%Change From Previous Year | 前月(期)比<br>%Change From Previous Month (Quarter) | 前年(同月期)比<br>%Change From Previous Year |                                      | 前月(期)比<br>%Change From Previous Month (Quarter) | 前年(同月期)比<br>%Change From Previous Year |                        |       |           |      |           |
|          |   |  |                                      |   |  |   |  |                                      |   |  |                        |       |           |      |           |
| 2019年    | 104.7   |  | 1.1                                  |   | 86.9                                   | -10.8   | 95.8                                   |                                      | -1.2  |  | 105.1                  | -5.8  | C.Y. 2019 |      |           |
| 2020年    | 104.0   |  | -0.7                                 |   | 69.0                                   | -20.6   | 94.9                                   |                                      | -0.9  |  | 90.4                   | -14.0 | 2020      |      |           |
| 2021年    | 106.1   |  | 2.0                                  |   | 86.2                                   | 24.9  | 94.0                                   |                                      | -0.9  |  | 111.6                  | 23.5  | 2021      |      |           |
| 2019年度   | 104.5   |  | -0.2                                 |   | 82.6                                   | -13.5   | 95.8                                   |                                      | -0.5  |  | 102.8                  | -7.6  | F.Y. 2019 |      |           |
| 2020年度   | 104.7   |  | 0.2                                  |   | 70.3                                   | -14.9   | 95.2                                   |                                      | -0.6  |  | 92.7                   | -9.8  | 2020      |      |           |
| 2021年度   | 107.6   |  | 2.8                                  |   | 89.4                                   | 27.2  | 96.7                                   |                                      | 1.6   |  | 112.4                  | 21.3  | 2021      |      |           |
| 2021年 I期 | 104.7   | 0.7                                    | 0.2                                  | 79.8  | 9.8                                    | 81.9  | 6.9                                    | 95.2                                 | 0.3   | -0.6                                   | 106.8                  | 9.9   | 107.5     | 9.5  | Q1 2021   |
| II期      | 106.2   | 1.4                                    | 2.2                                  | 88.1  | 10.4                                   | 87.1  | 44.9                                   | 94.4                                 | -0.8  | -1.6                                   | 113.2                  | 6.0   | 113.5     | 42.9 | Q2        |
| III期     | 106.0   | -0.2                                   | 3.0                                  | 86.4  | -1.9                                   | 85.2  | 30.1                                   | 94.2                                 | -0.2  | -0.7                                   | 112.6                  | -0.5  | 109.5     | 32.1 | Q3        |
| IV期      | 106.1   | 0.1                                    | 2.0                                  | 90.0  | 4.2                                    | 90.5  | 22.8                                   | 94.0                                 | -0.2  | -0.9                                   | 112.9                  | 0.3   | 115.8     | 14.7 | Q4        |
| 2022年 I期 | 107.6   | 1.4                                    | 2.8                                  | 92.4  | 2.7                                    | 94.7  | 15.6                                   | 96.7                                 | 2.9   | 1.6                                    | 110.1                  | -2.5  | 110.6     | 2.9  | Q1 2022   |
| 2021年 2月 | 104.4   | -0.3                                   | -0.4                                 | 80.0  | 1.4                                    | 80.2  | 9.4                                    | 95.0                                 | 0.0   | -0.9                                   | 107.2                  | 1.6   | 106.7     | 14.1 | Feb. 2021 |
| 3月       | 104.7   | 0.3                                    | 0.2                                  | 80.4  | 0.5                                    | 95.4  | 14.4                                   | 95.2                                 | 0.2   | -0.6                                   | 107.8                  | 0.6   | 119.1     | 15.6 | Mar.      |
| 4月       | 104.6   | -0.1                                   | 0.3                                  | 90.8  | 12.9                                   | 89.1  | 40.3                                   | 94.3                                 | -0.9  | -1.7                                   | 114.5                  | 6.2   | 116.7     | 29.7 | Apr.      |
| 5月       | 104.5   | -0.1                                   | -0.3                                 | 86.9  | -4.3                                   | 78.3  | 56.6                                   | 94.4                                 | 0.1   | -1.6                                   | 110.1                  | -3.8  | 101.0     | 51.7 | May       |
| 6月       | 106.2   | 1.6                                    | 2.2                                  | 86.7  | -0.2                                   | 93.8  | 40.2                                   | 94.4                                 | 0.0   | -1.6                                   | 115.0                  | 4.5   | 122.9     | 50.8 | Jun.      |
| 7月       | 106.6   | 0.4                                    | 2.4                                  | 87.2  | 0.6                                    | 88.6  | 34.7                                   | 94.4                                 | 0.0   | -1.6                                   | 113.5                  | -1.3  | 116.9     | 36.2 | Jul.      |
| 8月       | 105.0   | -1.5                                   | 1.8                                  | 85.8  | -1.6                                   | 75.9  | 34.6                                   | 94.4                                 | 0.0   | -1.6                                   | 112.2                  | -1.1  | 98.2      | 39.1 | Aug.      |
| 9月       | 106.0   | 1.0                                    | 3.0                                  | 86.3  | 0.6                                    | 91.0  | 22.5                                   | 94.2                                 | -0.2  | -0.7                                   | 112.2                  | 0.0   | 113.4     | 22.7 | Sep.      |
| 10月      | 105.9   | -0.1                                   | 2.5                                  | 87.9  | 1.9                                    | 87.6  | 19.3                                   | 93.9                                 | -0.3  | -1.1                                   | 113.4                  | 1.1   | 115.6     | 14.2 | Oct.      |
| 11月      | 105.9   | 0.0                                    | 2.0                                  | 92.6  | 5.3                                    | 92.5  | 29.7                                   | 93.9                                 | 0.0   | -1.1                                   | 113.5                  | 0.1   | 118.9     | 18.9 | Nov.      |
| 12月      | 106.1   | 0.2                                    | 2.0                                  | 89.5  | -3.3                                   | 91.3  | 19.7                                   | 94.0                                 | 0.1   | -0.9                                   | 111.8                  | -1.5  | 112.8     | 10.9 | Dec.      |
| 2022年 1月 | 106.6   | 0.5                                    | 1.8                                  | 93.7  | 4.7                                    | 83.4  | 18.8                                   | 96.7                                 | 2.9   | 1.8                                    | 110.9                  | -0.8  | 101.5     | 5.1  | Jan. 2022 |
| 2月       | 106.6   | 0.0                                    | 2.1                                  | 91.3  | -2.6                                   | 91.5  | 14.1                                   | 96.7                                 | 0.0   | 1.8                                    | 109.4                  | -1.4  | 108.8     | 2.0  | Feb.      |
| 3月       | 107.6   | 0.9                                    | 2.8                                  | 92.1  | 0.9                                    | 109.2   | 14.5                                   | 96.7                                 | 0.0   | 1.6                                    | 110.1                  | 0.6   | 121.6     | 2.1  | Mar.      |
| 4月       | 106.7   | -0.8                                   | 2.0                                  | 89.8  | -2.5                                   | 86.0  | -3.5                                   | 97.4                                 | 0.7   | 3.3                                    | 111.2                  | 1.0   | 110.7     | -5.1 | Apr.      |

〈電気・情報通信機械工業; Electrical machinery, and Information and communication electronics equipment〉

〈電子部品・デバイス工業; Electronic parts and devices〉

|          | 生産能力(末)<br>Production Capacity                  |  |                                      | 稼働率<br>Operating Ratio                          |  |   |  | 生産能力(末)<br>Production Capacity       |   |  | 稼働率<br>Operating Ratio |       |           |       |           |
|----------|---|--|--------------------------------------|---|--|---|--|--------------------------------------|---|--|------------------------|-------|-----------|-------|-----------|
|          | 原指数<br>Original Index                           |  | 季節調整済指数<br>Seasonally Adjusted Index | 原指数<br>Original Index                           |  | 原指数<br>Original Index                           |  | 季節調整済指数<br>Seasonally Adjusted Index | 原指数<br>Original Index                           |  |                        |       |           |       |           |
|          | 前月(期)比<br>%Change From Previous Month (Quarter) | 前年(同月期)比<br>%Change From Previous Year |                                      | 前月(期)比<br>%Change From Previous Month (Quarter) | 前年(同月期)比<br>%Change From Previous Year | 前月(期)比<br>%Change From Previous Month (Quarter) | 前年(同月期)比<br>%Change From Previous Year |                                      | 前月(期)比<br>%Change From Previous Month (Quarter) | 前年(同月期)比<br>%Change From Previous Year |                        |       |           |       |           |
|          |   |  |                                      |   |  |   |  |                                      |   |  |                        |       |           |       |           |
| 2019年    | 103.5   |  | -3.3                                 |   | 91.7                                   | -10.4   | 92.6                                   |                                      | -1.1  |  | 107.5                  | 1.2   | C.Y. 2019 |       |           |
| 2020年    | 100.7   |  | -2.7                                 |   | 96.4                                   | 5.1   | 92.4                                   |                                      | -0.2  |  | 94.4                   | -12.2 | 2020      |       |           |
| 2021年    | 101.3   |  | 0.6                                  |   | 104.2                                  | 8.1   | 89.4                                   |                                      | -3.2  |  | 95.9                   | 1.6   | 2021      |       |           |
| 2019年度   | 103.5   |  | -2.5                                 |   | 95.4                                   | -2.6  | 93.1                                   |                                      | -0.3  |  | 104.6                  | -2.1  | F.Y. 2019 |       |           |
| 2020年度   | 101.4   |  | -2.0                                 |   | 97.5                                   | 2.2   | 92.1                                   |                                      | -1.1  |  | 96.7                   | -7.6  | 2020      |       |           |
| 2021年度   | 97.2  |  | -4.1                                 |   | 103.4                                  | 6.1   | 90.6                                   |                                      | -1.6  |  | 93.4                   | -3.4  | 2021      |       |           |
| 2021年 I期 | 101.4   | 0.7                                    | -2.0                                 | 102.2   | 4.4                                    | 100.2   | 4.4                                    | 92.1                                 | -0.3  | -1.1                                   | 103.6                  | 3.9   | 104.0     | 9.5   | Q1 2021   |
| II期      | 99.9  | -1.5                                   | 0.0                                  | 104.4   | 2.2                                    | 104.0   | 12.1                                   | 90.5                                 | -1.7  | -1.5                                   | 99.3                   | -4.2  | 104.1     | 12.1  | Q2        |
| III期     | 100.4   | 0.5                                    | 0.5                                  | 106.0   | 1.5                                    | 108.7   | 10.7                                   | 89.4                                 | -1.2  | -3.0                                   | 88.3                   | -11.1 | 85.9      | -7.5  | Q3        |
| IV期      | 101.3   | 0.9                                    | 0.6                                  | 103.9   | -2.0                                   | 103.9   | 5.2                                    | 89.4                                 | 0.0   | -3.2                                   | 91.4                   | 3.5   | 89.6      | -7.5  | Q4        |
| 2022年 I期 | 97.2  | -4.0                                   | -4.1                                 | 99.2  | -4.5                                   | 97.2  | -3.0                                   | 90.6                                 | 1.3   | -1.6                                   | 93.4                   | 2.2   | 94.1      | -9.5  | Q1 2022   |
| 2021年 2月 | 101.3   | 1.1                                    | -1.9                                 | 100.8   | -1.0                                   | 94.0  | 3.3                                    | 92.0                                 | -0.3  | -1.5                                   | 102.6                  | -4.9  | 100.7     | 12.5  | Feb. 2021 |
| 3月       | 101.4   | 0.1                                    | -2.0                                 | 104.0   | 3.2                                    | 106.1   | 6.3                                    | 92.1                                 | 0.1   | -1.1                                   | 100.3                  | -2.2  | 115.8     | 9.7   | Mar.      |
| 4月       | 99.0  | -2.4                                   | -0.3                                 | 103.3   | -0.7                                   | 101.4   | 10.3                                   | 92.1                                 | 0.0   | 0.1                                    | 102.4                  | 2.1   | 105.4     | 12.8  | Apr.      |
| 5月       | 99.9  | 0.9                                    | 0.6                                  | 104.3   | 1.0                                    | 103.1   | 14.0                                   | 90.7                                 | -1.5  | -1.4                                   | 96.8                   | -5.5  | 93.2      | 13.7  | May       |
| 6月       | 99.9  | 0.0                                    | 0.0                                  | 105.6   | 1.2                                    | 107.4   | 11.9                                   | 90.5                                 | -0.2  | -1.5                                   | 98.8                   | 2.1   | 113.8     | 10.1  | Jun.      |
| 7月       | 100.4   | 0.5                                    | 0.3                                  | 106.3   | 0.7                                    | 108.7   | 9.8                                    | 89.1                                 | -1.5  | -3.3                                   | 92.5                   | -6.4  | 100.9     | -2.6  | Jul.      |
| 8月       | 100.4   | 0.0                                    | 0.3                                  | 107.0   | 0.7                                    | 109.5   | 14.7                                   | 89.0                                 | -0.1  | -3.5                                   | 85.4                   | -7.7  | 72.6      | -6.7  | Aug.      |
| 9月       | 100.4   | 0.0                                    | 0.5                                  | 104.6   | -2.2                                   | 107.8   | 7.6                                    | 89.4                                 | 0.4   | -3.0                                   | 86.9                   | 1.8   | 84.2      | -13.5 | Sep.      |
| 10月      | 101.1   | 0.7                                    | 0.9                                  | 102.7   | -1.8                                   | 103.1   | 2.0                                    | 89.4                                 | 0.0   | -3.4                                   | 92.1                   | 6.0   | 86.7      | -10.2 | Oct.      |
| 11月      | 101.2   | 0.1                                    | 0.8                                  | 105.4   | 2.6                                    | 105.6   | 10.2                                   | 89.4                                 | 0.0   | -3.2                                   | 91.1                   | -1.1  | 88.8      | -7.4  | Nov.      |
| 12月      | 101.3   | 0.1                                    | 0.6                                  | 103.7   | -1.6                                   | 102.9   | 3.5                                    | 89.4                                 | 0.0   | -3.2                                   | 91.0                   | -0.1  | 93.3      | -4.9  | Dec.      |
| 2022年 1月 | 97.2  | -4.0                                   | -3.0                                 | 103.0   | -0.7                                   | 101.8   | 1.2                                    | 90.5                                 | 1.2   | -2.0                                   | 94.7                   | 4.1   | 83.7      | -12.3 | Jan. 2022 |
| 2月       | 97.1  | -0.1                                   | -4.1                                 | 99.1  | -3.8                                   | 92.4  | -1.7                                   | 90.5                                 | 0.0   | -1.6                                   | 90.8                   | -4.1  | 89.2      | -11.4 | Feb.      |
| 3月       | 97.2  | 0.1                                    | -4.1                                 | 95.6  | -3.5                                   | 97.5  | -8.1                                   | 90.6                                 | 0.1   | -1.6                                   | 94.8                   | 4.4   | 109.4     | -5.5  | Mar.      |
| 4月       | 96.9  | -0.3                                   | -2.1                                 | 109.8   | 14.9                                   | 106.0   | 4.5                                    | 89.4                                 | -1.3  | -2.9                                   | 94.0                   | -0.8  | 94.8      | -10.1 | Apr.      |

〈電気機械工業; Electrical machinery〉

〈情報通信機械工業; Information and communication electronics equipment〉

index.2015= 100

|          | 生産能力(末)<br>Production Capacity                              |   |                                      | 稼働率<br>Operating Ratio                                      |   |   |   | 生産能力(末)<br>Production Capacity                              |   |                                      | 稼働率<br>Operating Ratio |       |       |       |           |
|----------|---|---|--------------------------------------|---|---|---|---|---|---|--------------------------------------|------------------------|-------|-------|-------|-----------|
|          | 原指数<br>Original Index                                       |   | 季節調整済指数<br>Seasonally Adjusted Index | 原指数<br>Original Index                                       |   | 原指数<br>Original Index                                       |   | 原指数<br>Original Index                                       |   | 季節調整済指数<br>Seasonally Adjusted Index | 原指数<br>Original Index  |       |       |       |           |
|          | 前月(期)比<br>%Change<br>From<br>Previous<br>Month<br>(Quarter) | 前年<br>(同月期)比<br>%Change<br>From<br>Previous<br>Year |                                      | 前月(期)比<br>%Change<br>From<br>Previous<br>Month<br>(Quarter) | 前年<br>(同月期)比<br>%Change<br>From<br>Previous<br>Year | 前月(期)比<br>%Change<br>From<br>Previous<br>Month<br>(Quarter) | 前年<br>(同月期)比<br>%Change<br>From<br>Previous<br>Year | 前月(期)比<br>%Change<br>From<br>Previous<br>Month<br>(Quarter) | 前年<br>(同月期)比<br>%Change<br>From<br>Previous<br>Year |                                      |                        |       |       |       |           |
|          |   |   |                                      |   |   |   |   |   |   |                                      |                        |       |       |       |           |
| 2019年    | 97.1  | -1.3  |                                      | 101.4   | -4.8  | 85.0  | -0.6  |   | 122.6   | 16.2                                 | C.Y. 2019              |       |       |       |           |
| 2020年    | 96.4  | -0.7  |                                      | 92.8  | -8.5  | 85.8  | 0.9   |   | 98.4  | -19.7                                | 2020                   |       |       |       |           |
| 2021年    | 96.6  | 0.2   |                                      | 95.3  | 2.7   | 77.3  | -9.9  |   | 97.2  | -1.2                                 | 2021                   |       |       |       |           |
| 2019年度   | 98.1  | 0.3   |                                      | 98.4  | -7.8  | 84.6  | -1.4  |   | 119.8   | 11.6                                 | F.Y. 2019              |       |       |       |           |
| 2020年度   | 96.7  | -1.4  |                                      | 94.9  | -3.6  | 84.3  | -0.4  |   | 100.9   | -15.8                                | 2020                   |       |       |       |           |
| 2021年度   | 98.2  | 1.6   |                                      | 93.8  | -1.2  | 77.8  | -7.7  |   | 92.4  | -8.4                                 | 2021                   |       |       |       |           |
| 2021年 I期 | 96.7  | 0.3   | -1.4                                 | 101.6   | 5.3   | 98.6  | 9.3   | 84.3  | -1.7  | -0.4                                 | 108.4                  | 3.7   | 117.1 | 9.5   | Q1 2021   |
| II期      | 96.9  | 0.2   | 0.6                                  | 98.9  | -2.7  | 110.1   | 14.1  | 79.6  | -5.6  | -5.8                                 | 98.7                   | -8.9  | 89.4  | 6.4   | Q2        |
| III期     | 96.5  | -0.4  | 0.2                                  | 89.0  | -10.0   | 85.9  | -6.9  | 77.3  | -2.9  | -9.5                                 | 87.9                   | -10.9 | 85.6  | -9.3  | Q3        |
| IV期      | 96.6  | 0.1   | 0.2                                  | 90.9  | 2.1   | 86.7  | -6.1  | 77.3  | 0.0   | -9.9                                 | 92.3                   | 5.0   | 96.7  | -10.6 | Q4        |
| 2022年 I期 | 98.2  | 1.7   | 1.6                                  | 95.1  | 4.6   | 92.6  | -6.1  | 77.8  | 0.6   | -7.7                                 | 90.1                   | -2.4  | 97.8  | -16.5 | Q1 2022   |
| 2021年 2月 | 96.7  | -0.2  | -1.9                                 | 99.7  | -5.0  | 94.7  | 12.9  | 84.1  | -0.5  | -0.4                                 | 109.4                  | -2.3  | 115.4 | 11.7  | Feb. 2021 |
| 3月       | 96.7  | 0.0   | -1.4                                 | 100.0   | 0.3   | 111.5   | 7.5   | 84.3  | 0.2   | -0.4                                 | 103.8                  | -5.1  | 126.5 | 14.6  | Mar.      |
| 4月       | 96.8  | 0.1   | 0.5                                  | 102.9   | 2.9   | 113.0   | 17.0  | 84.3  | 0.0   | -0.4                                 | 99.0                   | -4.6  | 86.5  | 1.3   | Apr.      |
| 5月       | 96.9  | 0.1   | 0.6                                  | 96.6  | -6.1  | 99.2  | 16.3  | 80.1  | -5.0  | -5.3                                 | 96.7                   | -2.3  | 78.6  | 6.8   | May       |
| 6月       | 96.9  | 0.0   | 0.6                                  | 97.2  | 0.6   | 118.2   | 9.7   | 79.6  | -0.6  | -5.8                                 | 100.5                  | 3.9   | 103.2 | 11.1  | Jun.      |
| 7月       | 96.2  | -0.7  | -0.1                                 | 90.8  | -6.6  | 105.6   | -4.0  | 77.1  | -3.1  | -9.3                                 | 95.4                   | -5.1  | 89.1  | 1.6   | Jul.      |
| 8月       | 96.2  | 0.0   | -0.1                                 | 87.0  | -4.2  | 72.5  | -4.4  | 77.0  | -0.1  | -9.7                                 | 81.8                   | -14.3 | 72.6  | -12.5 | Aug.      |
| 9月       | 96.5  | 0.3   | 0.2                                  | 89.3  | 2.6   | 79.7  | -12.5   | 77.3  | 0.4   | -9.5                                 | 86.5                   | 5.7   | 95.1  | -15.5 | Sep.      |
| 10月      | 96.5  | 0.0   | 0.1                                  | 92.4  | 3.5   | 86.7  | -7.9  | 77.3  | 0.0   | -9.9                                 | 90.2                   | 4.3   | 86.5  | -15.9 | Oct.      |
| 11月      | 96.5  | 0.0   | 0.1                                  | 91.2  | -1.3  | 87.2  | -4.2  | 77.3  | 0.0   | -9.9                                 | 90.0                   | -0.2  | 92.5  | -14.3 | Nov.      |
| 12月      | 96.6  | 0.1   | 0.2                                  | 89.0  | -2.4  | 86.1  | -6.2  | 77.3  | 0.0   | -9.9                                 | 96.6                   | 7.3   | 111.1 | -2.4  | Dec.      |
| 2022年 1月 | 98.2  | 1.7   | 1.3                                  | 96.0  | 7.9   | 82.0  | -8.6  | 77.5  | 0.3   | -8.3                                 | 90.1                   | -6.7  | 88.1  | -19.5 | Jan. 2022 |
| 2月       | 98.2  | 0.0   | 1.6                                  | 92.9  | -3.2  | 88.2  | -6.9  | 77.5  | 0.0   | -7.8                                 | 86.8                   | -3.7  | 91.6  | -20.6 | Feb.      |
| 3月       | 98.2  | 0.0   | 1.6                                  | 96.5  | 3.9   | 107.6   | -3.5  | 77.8  | 0.4   | -7.7                                 | 93.3                   | 7.5   | 113.7 | -10.1 | Mar.      |
| 4月       | 96.9  | -1.3  | 0.1                                  | 93.1  | -3.5  | 100.2   | -11.3   | 76.6  | -1.5  | -9.1                                 | 95.5                   | 2.4   | 81.6  | -5.7  | Apr.      |

〈輸送機械工業; Transport equipment〉

〈窯業・土石製品工業; Ceramics, stone and clay products〉

|          | 生産能力(末)<br>Production Capacity                              |   |                                      | 稼働率<br>Operating Ratio                                      |   |   |   | 生産能力(末)<br>Production Capacity                              |   |                                      | 稼働率<br>Operating Ratio |       |         |      |           |
|----------|---|---|--------------------------------------|---|---|---|---|---|---|--------------------------------------|------------------------|-------|---------|------|-----------|
|          | 原指数<br>Original Index                                       |   | 季節調整済指数<br>Seasonally Adjusted Index | 原指数<br>Original Index                                       |   | 原指数<br>Original Index                                       |   | 原指数<br>Original Index                                       |   | 季節調整済指数<br>Seasonally Adjusted Index | 原指数<br>Original Index  |       |         |      |           |
|          | 前月(期)比<br>%Change<br>From<br>Previous<br>Month<br>(Quarter) | 前年<br>(同月期)比<br>%Change<br>From<br>Previous<br>Year |                                      | 前月(期)比<br>%Change<br>From<br>Previous<br>Month<br>(Quarter) | 前年<br>(同月期)比<br>%Change<br>From<br>Previous<br>Year | 前月(期)比<br>%Change<br>From<br>Previous<br>Month<br>(Quarter) | 前年<br>(同月期)比<br>%Change<br>From<br>Previous<br>Year | 前月(期)比<br>%Change<br>From<br>Previous<br>Month<br>(Quarter) | 前年<br>(同月期)比<br>%Change<br>From<br>Previous<br>Year |                                      |                        |       |         |      |           |
|          |   |   |                                      |   |   |   |   |   |   |                                      |                        |       |         |      |           |
| 2019年    | 99.7  | 0.4   |                                      | 104.0   | -0.7  | 96.4  | -1.0  |   | 98.3  | -4.8                                 | C.Y. 2019              |       |         |      |           |
| 2020年    | 99.5  | -0.2  |                                      | 85.6  | -17.7   | 93.5  | -3.0  |   | 88.9  | -9.6                                 | 2020                   |       |         |      |           |
| 2021年    | 96.7  | -2.8  |                                      | 87.0  | 1.6   | 92.5  | -1.1  |   | 92.6  | 4.2                                  | 2021                   |       |         |      |           |
| 2019年度   | 99.4  | 0.3   |                                      | 101.8   | -3.0  | 96.5  | -0.5  |   | 97.9  | -4.3                                 | F.Y. 2019              |       |         |      |           |
| 2020年度   | 97.9  | -1.5  |                                      | 85.0  | -16.5   | 92.9  | -3.7  |   | 87.9  | -10.2                                | 2020                   |       |         |      |           |
| 2021年度   | 94.6  | -3.4  |                                      | 84.8  | -0.2  | 92.0  | -1.0  |   | 92.3  | 5.0                                  | 2021                   |       |         |      |           |
| 2021年 I期 | 97.9  | -1.6  | -1.5                                 | 96.9  | -1.4  | 92.9  | -0.6  | -3.7  | 94.0  | 3.1                                  | 92.4                   | -4.0  | Q1 2021 |      |           |
| II期      | 97.9  | 0.0   | -1.6                                 | 91.0  | -6.1  | 86.8  | 59.0  | 92.8  | -0.1  | -3.6                                 | 95.3                   | 1.4   | 93.8    | 18.1 | Q2        |
| III期     | 96.7  | -1.2  | -2.8                                 | 73.2  | -19.6   | 74.1  | -14.6   | 92.5  | -0.3  | -1.1                                 | 91.6                   | -3.9  | 90.9    | 6.9  | Q3        |
| IV期      | 96.7  | 0.0   | -2.8                                 | 86.4  | 18.0  | 89.0  | -11.3   | 92.5  | 0.0   | -1.1                                 | 89.9                   | -1.9  | 93.5    | -1.5 | Q4        |
| 2022年 I期 | 94.6  | -2.2  | -3.4                                 | 88.3  | 2.2   | 89.4  | -8.8  | 92.0  | -0.5  | -1.0                                 | 92.6                   | 3.0   | 90.8    | -1.7 | Q1 2022   |
| 2021年 2月 | 98.7  | 0.0   | -0.7                                 | 91.2  | -7.3  | 91.7  | -6.9  | 92.9  | 0.0   | -3.7                                 | 92.8                   | -1.6  | 87.3    | -7.6 | Feb. 2021 |
| 3月       | 97.9  | -0.8  | -1.5                                 | 101.1   | 10.9  | 113.5   | 7.5   | 92.9  | 0.0   | -3.7                                 | 94.9                   | 2.3   | 99.7    | -0.9 | Mar.      |
| 4月       | 97.9  | 0.0   | -1.6                                 | 100.0   | -1.1  | 95.0  | 63.0  | 92.8  | -0.1  | -3.5                                 | 94.9                   | 0.0   | 93.5    | 10.8 | Apr.      |
| 5月       | 97.9  | 0.0   | -1.6                                 | 80.7  | -19.3   | 67.4  | 67.7  | 92.8  | 0.0   | -3.6                                 | 95.2                   | 0.3   | 91.4    | 24.2 | May       |
| 6月       | 97.9  | 0.0   | -1.6                                 | 92.3  | 14.4  | 97.9  | 49.7  | 92.8  | 0.0   | -3.6                                 | 95.7                   | 0.5   | 96.6    | 20.6 | Jun.      |
| 7月       | 97.9  | 0.0   | -1.6                                 | 90.2  | -2.3  | 96.9  | 10.9  | 92.8  | 0.0   | -3.5                                 | 92.8                   | -3.0  | 96.7    | 9.8  | Jul.      |
| 8月       | 97.9  | 0.0   | -1.6                                 | 74.9  | -17.0   | 64.9  | -7.2  | 92.8  | 0.0   | -3.5                                 | 96.1                   | 3.6   | 90.0    | 14.9 | Aug.      |
| 9月       | 96.7  | -1.2  | -2.8                                 | 54.5  | -27.2   | 60.6  | -41.3   | 92.5  | -0.3  | -1.1                                 | 85.8                   | -10.7 | 86.0    | -2.9 | Sep.      |
| 10月      | 96.7  | 0.0   | -2.8                                 | 66.9  | 22.8  | 70.5  | -33.4   | 92.5  | 0.0   | -1.1                                 | 85.3                   | -0.6  | 89.0    | -7.3 | Oct.      |
| 11月      | 96.7  | 0.0   | -2.8                                 | 95.3  | 42.5  | 101.6   | 2.1   | 92.5  | 0.0   | -1.1                                 | 91.6                   | 7.4   | 95.6    | 2.0  | Nov.      |
| 12月      | 96.7  | 0.0   | -2.8                                 | 97.1  | 1.9   | 95.0  | -0.7  | 92.5  | 0.0   | -1.1                                 | 92.9                   | 1.4   | 95.8    | 0.7  | Dec.      |
| 2022年 1月 | 94.6  | -2.2  | -4.2                                 | 82.9  | -14.6   | 74.9  | -15.7   | 92.4  | -0.1  | -0.5                                 | 94.2                   | 1.4   | 90.0    | -0.1 | Jan. 2022 |
| 2月       | 94.6  | 0.0   | -4.2                                 | 94.0  | 13.4  | 94.5  | 3.1   | 92.4  | 0.0   | -0.5                                 | 94.6                   | 0.4   | 89.0    | 1.9  | Feb.      |
| 3月       | 94.6  | 0.0   | -3.4                                 | 88.1  | -6.3  | 98.9  | -12.9   | 92.0  | -0.4  | -1.0                                 | 88.9                   | -6.0  | 93.4    | -6.3 | Mar.      |
| 4月       | 94.8  | 0.2   | -3.2                                 | 88.0  | -0.1  | 81.0  | -14.7   | 92.1  | 0.1   | -0.8                                 | 91.9                   | 3.4   | 90.0    | -3.7 | Apr.      |

〈石油・石炭製品工業; Petroleum and coal products〉

index.2015= 100

〈化学工業; Chemicals〉

|          | 生産能力(末)<br>Production Capacity                              |   |      | 稼働率<br>Operating Ratio                                      |   |   |   | 生産能力(末)<br>Production Capacity                              |   |   | 稼働率<br>Operating Ratio                              |   |   |       |           |
|----------|---|---|------|---|---|---|---|---|---|---|---|---|---|-------|-----------|
|          | 原指数<br>Original Index                                       |   |      | 季節調整済指数<br>Seasonally Adjusted Index                        |   | 原指数<br>Original Index                                       |   | 原指数<br>Original Index                                       |   |   | 季節調整済指数<br>Seasonally Adjusted Index                |   | 原指数<br>Original Index                               |       |           |
|          | 前月(期)比<br>%Change<br>From<br>Previous<br>Month<br>(Quarter) | 前年<br>(同月期)比<br>%Change<br>From<br>Previous<br>Year |      | 前月(期)比<br>%Change<br>From<br>Previous<br>Month<br>(Quarter) | 前年<br>(同月期)比<br>%Change<br>From<br>Previous<br>Year | 前月(期)比<br>%Change<br>From<br>Previous<br>Month<br>(Quarter) | 前年<br>(同月期)比<br>%Change<br>From<br>Previous<br>Year | 前月(期)比<br>%Change<br>From<br>Previous<br>Month<br>(Quarter) | 前年<br>(同月期)比<br>%Change<br>From<br>Previous<br>Year | 前月(期)比<br>%Change<br>From<br>Previous<br>Month<br>(Quarter) | 前年<br>(同月期)比<br>%Change<br>From<br>Previous<br>Year | 前月(期)比<br>%Change<br>From<br>Previous<br>Month<br>(Quarter) | 前年<br>(同月期)比<br>%Change<br>From<br>Previous<br>Year |       |           |
|          |   |   |      |   |   |   |   |   |   |   |   |   |   |       |           |
| 2019年    | 98.4  | -0.5  |      |   |   | 100.5   | 0.4   | 90.0  |   | 0.0   |   |   | 105.1   | -0.4  | C.Y. 2019 |
| 2020年    | 98.4  | 0.0   |      |   |   | 89.6  | -10.8   | 88.5  |   | -1.7  |   |   | 86.8  | -17.4 | 2020      |
| 2021年    | 97.8  | -0.6  |      |   |   | 96.2  | 7.4   | 88.4  |   | -0.1  |   |   | 87.6  | 0.9   | 2021      |
| 2019年度   | 98.7  | -0.2  |      |   |   | 98.7  | -1.5  | 90.0  |   | 0.0   |   |   | 103.3   | -1.5  | F.Y. 2019 |
| 2020年度   | 98.3  | -0.4  |      |   |   | 89.5  | -9.3  | 88.5  |   | -1.7  |   |   | 83.7  | -19.0 | 2020      |
| 2021年度   | 96.9  | -1.4  |      |   |   | 95.6  | 6.8   | 88.4  |   | -0.1  |   |   | 89.2  | 6.6   | 2021      |
| 2021年 I期 | 98.3  | -0.1  | -0.4 | 93.3  | 4.7   | 94.6  | -0.7  | 88.5  | 0.0   | -1.7  | 84.3  | -3.2  | 89.3  | -12.3 | Q1 2021   |
| II期      | 97.8  | -0.5  | -0.9 | 97.9  | 4.9   | 93.4  | 14.3  | 88.4  | -0.1  | -1.7  | 85.8  | 1.8   | 78.1  | 0.9   | Q2        |
| III期     | 97.9  | 0.1   | -0.7 | 97.2  | -0.7  | 97.0  | 9.6   | 88.4  | 0.0   | -1.7  | 89.8  | 4.7   | 88.4  | 12.5  | Q3        |
| IV期      | 97.8  | -0.1  | -0.6 | 96.3  | -0.9  | 99.7  | 7.0   | 88.4  | 0.0   | -0.1  | 90.0  | 0.2   | 94.4  | 5.8   | Q4        |
| 2022年 I期 | 96.9  | -0.9  | -1.4 | 90.9  | -5.6  | 92.1  | -2.6  | 88.4  | 0.0   | -0.1  | 90.8  | 0.9   | 96.0  | 7.5   | Q1 2022   |
| 2021年 2月 | 98.3  | 0.0   | -0.4 | 90.9  | -2.5  | 88.6  | -7.0  | 88.2  | -0.3  | -1.9  | 83.4  | -3.9  | 82.4  | -14.0 | Feb. 2021 |
| 3月       | 98.3  | 0.0   | -0.4 | 95.9  | 5.5   | 98.0  | 7.1   | 88.5  | 0.3   | -1.7  | 82.7  | -0.8  | 88.1  | -12.6 | Mar.      |
| 4月       | 97.9  | -0.4  | -0.8 | 96.4  | 0.5   | 97.0  | 7.7   | 88.4  | -0.1  | -1.7  | 84.9  | 2.7   | 84.1  | -4.4  | Apr.      |
| 5月       | 97.9  | 0.0   | -0.8 | 98.5  | 2.2   | 93.1  | 15.7  | 88.5  | 0.1   | -1.7  | 85.7  | 0.9   | 76.7  | 4.6   | May       |
| 6月       | 97.8  | -0.1  | -0.9 | 98.9  | 0.4   | 90.1  | 21.1  | 88.4  | -0.1  | -1.7  | 86.9  | 1.4   | 73.4  | 3.4   | Jun.      |
| 7月       | 97.8  | 0.0   | -0.9 | 95.8  | -3.1  | 94.0  | 9.2   | 88.5  | 0.1   | -1.7  | 86.2  | -0.8  | 80.7  | 9.2   | Jul.      |
| 8月       | 97.7  | -0.1  | -1.0 | 96.8  | 1.0   | 97.4  | 8.2   | 88.5  | 0.0   | -1.7  | 91.0  | 5.6   | 94.5  | 14.4  | Aug.      |
| 9月       | 97.9  | 0.2   | -0.7 | 99.1  | 2.4   | 99.6  | 11.5  | 88.4  | -0.1  | -1.7  | 92.1  | 1.2   | 90.0  | 13.5  | Sep.      |
| 10月      | 97.9  | 0.0   | -0.6 | 96.8  | -2.3  | 97.5  | 7.0   | 88.5  | 0.1   | 0.0   | 91.4  | -0.8  | 88.9  | 8.8   | Oct.      |
| 11月      | 97.9  | 0.0   | -0.5 | 96.0  | -0.8  | 98.0  | 7.9   | 88.4  | -0.1  | 0.0   | 88.4  | -3.3  | 90.4  | 3.8   | Nov.      |
| 12月      | 97.8  | -0.1  | -0.6 | 96.2  | 0.2   | 103.6   | 6.1   | 88.4  | 0.0   | -0.1  | 90.3  | 2.1   | 104.0   | 5.2   | Dec.      |
| 2022年 1月 | 97.8  | 0.0   | -0.5 | 93.3  | -3.0  | 97.4  | 0.1   | 88.4  | 0.0   | -0.1  | 90.0  | -0.3  | 101.0   | 3.6   | Jan. 2022 |
| 2月       | 96.9  | -0.9  | -1.4 | 89.9  | -3.6  | 87.6  | -1.1  | 88.2  | -0.2  | 0.0   | 91.6  | 1.8   | 90.5  | 9.8   | Feb.      |
| 3月       | 96.9  | 0.0   | -1.4 | 89.4  | -0.6  | 91.3  | -6.8  | 88.4  | 0.2   | -0.1  | 90.7  | -1.0  | 96.6  | 9.6   | Mar.      |
| 4月       | 96.8  | -0.1  | -1.1 | 90.6  | 1.3   | 90.7  | -6.5  | 88.4  | 0.0   | 0.0   | 94.4  | 4.1   | 93.4  | 11.1  | Apr.      |

〈パルプ・紙・紙加工品工業; Pulp, paper and paper products〉

〈その他工業; Other manufacturing〉

|          | 生産能力(末)<br>Production Capacity                              |   |      | 稼働率<br>Operating Ratio                                      |   |   |   | 生産能力(末)<br>Production Capacity                              |   |   | 稼働率<br>Operating Ratio                              |   |   |       |           |
|----------|---|---|------|---|---|---|---|---|---|---|---|---|---|-------|-----------|
|          | 原指数<br>Original Index                                       |   |      | 季節調整済指数<br>Seasonally Adjusted Index                        |   | 原指数<br>Original Index                                       |   | 原指数<br>Original Index                                       |   |   | 季節調整済指数<br>Seasonally Adjusted Index                |   | 原指数<br>Original Index                               |       |           |
|          | 前月(期)比<br>%Change<br>From<br>Previous<br>Month<br>(Quarter) | 前年<br>(同月期)比<br>%Change<br>From<br>Previous<br>Year |      | 前月(期)比<br>%Change<br>From<br>Previous<br>Month<br>(Quarter) | 前年<br>(同月期)比<br>%Change<br>From<br>Previous<br>Year | 前月(期)比<br>%Change<br>From<br>Previous<br>Month<br>(Quarter) | 前年<br>(同月期)比<br>%Change<br>From<br>Previous<br>Year | 前月(期)比<br>%Change<br>From<br>Previous<br>Month<br>(Quarter) | 前年<br>(同月期)比<br>%Change<br>From<br>Previous<br>Year | 前月(期)比<br>%Change<br>From<br>Previous<br>Month<br>(Quarter) | 前年<br>(同月期)比<br>%Change<br>From<br>Previous<br>Year | 前月(期)比<br>%Change<br>From<br>Previous<br>Month<br>(Quarter) | 前年<br>(同月期)比<br>%Change<br>From<br>Previous<br>Year |       |           |
|          |   |   |      |   |   |   |   |   |   |   |   |   |   |       |           |
| 2019年    | 101.8   | 0.2   |      |   |   | 96.6  | -2.7  | 95.0  |   | -0.9  |   |   | 97.8  | -1.7  | C.Y. 2019 |
| 2020年    | 100.3   | -1.5  |      |   |   | 86.9  | -10.0   | 93.1  |   | -2.0  |   |   | 83.7  | -14.4 | 2020      |
| 2021年    | 98.5  | -1.8  |      |   |   | 91.4  | 5.2   | 91.1  |   | -2.1  |   |   | 92.6  | 10.6  | 2021      |
| 2019年度   | 101.6   | -0.1  |      |   |   | 95.5  | -3.5  | 94.6  |   | -0.9  |   |   | 96.6  | -2.6  | F.Y. 2019 |
| 2020年度   | 100.1   | -1.5  |      |   |   | 86.0  | -9.9  | 91.2  |   | -3.6  |   |   | 83.0  | -14.1 | 2020      |
| 2021年度   | 98.2  | -1.9  |      |   |   | 92.1  | 7.1   | 90.9  |   | -0.3  |   |   | 93.4  | 12.5  | 2021      |
| 2021年 I期 | 100.1   | -0.2  | -1.5 | 90.0  | 1.6   | 89.2  | -3.9  | 91.2  | -2.0  | -3.6  | 91.0  | 2.5   | 90.8  | -3.1  | Q1 2021   |
| II期      | 99.8  | -0.3  | -1.8 | 92.0  | 2.2   | 91.1  | 11.8  | 90.9  | -0.3  | -3.8  | 93.1  | 2.3   | 93.0  | 32.5  | Q2        |
| III期     | 99.5  | -0.3  | -1.3 | 91.5  | -0.5  | 91.3  | 10.4  | 91.0  | 0.1   | -3.4  | 93.4  | 0.3   | 92.9  | 14.4  | Q3        |
| IV期      | 98.5  | -1.0  | -1.8 | 92.0  | 0.5   | 94.2  | 4.1   | 91.1  | 0.1   | -2.1  | 92.8  | -0.6  | 93.8  | 4.5   | Q4        |
| 2022年 I期 | 98.2  | -0.3  | -1.9 | 92.7  | 0.8   | 91.8  | 2.9   | 90.9  | -0.2  | -0.3  | 94.2  | 1.5   | 93.9  | 3.4   | Q1 2022   |
| 2021年 2月 | 100.1   | 0.0   | -1.8 | 89.1  | -2.2  | 83.9  | -5.7  | 91.2  | 0.0   | -3.7  | 89.3  | -1.5  | 87.6  | -4.8  | Feb. 2021 |
| 3月       | 100.1   | 0.0   | -1.5 | 89.9  | 0.9   | 96.9  | -3.0  | 91.2  | 0.0   | -3.6  | 93.0  | 4.1   | 100.0   | 0.7   | Mar.      |
| 4月       | 99.8  | -0.3  | -1.7 | 94.1  | 4.7   | 95.4  | 3.9   | 91.0  | -0.2  | -4.0  | 93.3  | 0.3   | 95.8  | 17.4  | Apr.      |
| 5月       | 99.8  | 0.0   | -1.7 | 91.6  | -2.7  | 90.3  | 15.6  | 90.9  | -0.1  | -4.1  | 92.2  | -1.2  | 86.9  | 35.1  | May       |
| 6月       | 99.8  | 0.0   | -1.8 | 90.2  | -1.5  | 87.5  | 17.4  | 90.9  | 0.0   | -3.8  | 93.9  | 1.8   | 96.3  | 48.6  | Jun.      |
| 7月       | 99.5  | -0.3  | -1.8 | 91.9  | 1.9   | 92.5  | 13.5  | 90.9  | 0.0   | -3.7  | 94.6  | 0.7   | 98.9  | 19.7  | Jul.      |
| 8月       | 99.5  | 0.0   | -1.4 | 91.3  | -0.7  | 89.4  | 13.2  | 90.9  | 0.0   | -3.7  | 93.6  | -1.1  | 85.2  | 15.1  | Aug.      |
| 9月       | 99.5  | 0.0   | -1.3 | 91.3  | 0.0   | 91.9  | 5.0   | 91.0  | 0.1   | -3.4  | 92.0  | -1.7  | 94.6  | 8.7   | Sep.      |
| 10月      | 98.6  | -0.9  | -1.6 | 92.4  | 1.2   | 96.9  | 4.6   | 91.0  | 0.0   | -2.9  | 92.4  | 0.4   | 96.2  | 4.0   | Oct.      |
| 11月      | 98.6  | 0.0   | -1.6 | 91.3  | -1.2  | 92.5  | 3.1   | 91.1  | 0.1   | -2.6  | 92.8  | 0.4   | 94.8  | 5.9   | Nov.      |
| 12月      | 98.5  | -0.1  | -1.8 | 92.4  | 1.2   | 93.1  | 4.4   | 91.1  | 0.0   | -2.1  | 93.2  | 0.4   | 90.4  | 3.6   | Dec.      |
| 2022年 1月 | 98.2  | -0.3  | -1.9 | 92.2  | -0.2  | 87.7  | 1.2   | 91.0  | -0.1  | -0.2  | 94.3  | 1.2   | 88.0  | 3.9   | Jan. 2022 |
| 2月       | 98.2  | 0.0   | -1.9 | 93.0  | 0.9   | 87.6  | 4.4   | 90.9  | -0.1  | -0.3  | 94.3  | 0.0   | 92.5  | 5.6   | Feb.      |
| 3月       | 98.2  | 0.0   | -1.9 | 92.8  | -0.2  | 100.0   | 3.2   | 90.9  | 0.0   | -0.3  | 94.1  | -0.2  | 101.1   | 1.1   | Mar.      |
| 4月       | 96.4  | -1.8  | -3.4 | 94.5  | 1.8   | 95.3  | -0.1  | 91.0  | 0.1   | 0.0   | 89.0  | -5.4  | 90.9  | -5.1  | Apr.      |

〈繊維工業; Textiles〉

〈その他製品工業; Other products〉

index.2015= 100

|          | 生産能力(末)<br>Production Capacity                              |   |      | 稼働率<br>Operating Ratio                                      |   |   |   | 生産能力(末)<br>Production Capacity                              |   |      | 稼働率<br>Operating Ratio                                      |   |                       |   |           |   |
|----------|---|---|------|---|---|---|---|---|---|------|---|---|-----------------------|---|-----------|---|
|          | 原指数<br>Original Index                                       |   |      | 季節調整済指数<br>Seasonally Adjusted Index                        |   | 原指数<br>Original Index                                       |   | 原指数<br>Original Index                                       |   |      | 季節調整済指数<br>Seasonally Adjusted Index                        |   | 原指数<br>Original Index |   |           |   |
|          | 前月(期)比<br>%Change<br>From<br>Previous<br>Month<br>(Quarter) | 前年<br>(同月期)比<br>%Change<br>From<br>Previous<br>Year |      | 前月(期)比<br>%Change<br>From<br>Previous<br>Month<br>(Quarter) | 前年<br>(同月期)比<br>%Change<br>From<br>Previous<br>Year | 前月(期)比<br>%Change<br>From<br>Previous<br>Month<br>(Quarter) | 前年<br>(同月期)比<br>%Change<br>From<br>Previous<br>Year | 前月(期)比<br>%Change<br>From<br>Previous<br>Month<br>(Quarter) | 前年<br>(同月期)比<br>%Change<br>From<br>Previous<br>Year |      | 前月(期)比<br>%Change<br>From<br>Previous<br>Month<br>(Quarter) | 前年<br>(同月期)比<br>%Change<br>From<br>Previous<br>Year |                       | 前月(期)比<br>%Change<br>From<br>Previous<br>Month<br>(Quarter) |           | 前年<br>(同月期)比<br>%Change<br>From<br>Previous<br>Year |
|          |   |   |      |   |   |   |   |   |   |      |   |   |                       |   |           |   |
| 2019年    | 93.8  |   | -1.6 |   |   | 93.9  | -3.3  | 95.9  |   | -0.4 |   |   | 100.6                 | -0.5  | C.Y. 2019 |   |
| 2020年    | 90.4  |   | -3.6 |   |   | 85.8  | -8.6  | 95.2  |   | -0.7 |   |   | 82.2                  | -18.3   | 2020      |   |
| 2021年    | 88.8  |   | -1.8 |   |   | 87.5  | 2.0   | 92.8  |   | -2.5 |   |   | 96.2                  | 17.0  | 2021      |   |
| 2019年度   | 93.0  |   | -1.7 |   |   | 93.2  | -3.5  | 95.9  |   | -0.2 |   |   | 99.0                  | -2.0  | F.Y. 2019 |   |
| 2020年度   | 89.3  |   | -4.0 |   |   | 84.2  | -9.7  | 92.6  |   | -3.4 |   |   | 82.2                  | -17.0   | 2020      |   |
| 2021年度   | 88.1  |   | -1.3 |   |   | 88.6  | 5.2   | 93.1  |   | 0.5  |   |   | 96.8                  | 17.8  | 2021      |   |
| 2021年 I期 | 89.3  | -1.2  | -4.0 | 85.2  | 2.8   | 85.9  | -7.0  | 92.6  | -2.7  | -3.4 | 95.0  | 2.0   | 94.2                  | -0.3  | Q1 2021   |   |
| II期      | 88.9  | -0.4  | -4.1 | 87.1  | 2.2   | 87.6  | 1.6   | 92.5  | -0.1  | -3.5 | 96.8  | 1.9   | 96.8                  | 64.1  | Q2        |   |
| III期     | 89.0  | 0.1   | -3.2 | 89.2  | 2.4   | 89.1  | 8.0   | 92.5  | 0.0   | -3.5 | 96.3  | -0.5  | 95.5                  | 18.9  | Q3        |   |
| IV期      | 88.8  | -0.2  | -1.8 | 88.6  | -0.7  | 87.3  | 6.2   | 92.8  | 0.3   | -2.5 | 96.8  | 0.5   | 98.4                  | 3.5   | Q4        |   |
| 2022年 I期 | 88.1  | -0.8  | -1.3 | 89.4  | 0.9   | 90.1  | 4.9   | 93.1  | 0.3   | 0.5  | 97.3  | 0.5   | 96.5                  | 2.4   | Q1 2022   |   |
| 2021年 2月 | 89.4  | 0.0   | -4.2 | 85.0  | 0.6   | 83.3  | -6.1  | 92.6  | 0.0   | -3.4 | 91.8  | -3.9  | 90.7                  | -3.8  | Feb. 2021 |   |
| 3月       | 89.3  | -0.1  | -4.0 | 86.0  | 1.2   | 91.4  | -5.8  | 92.6  | 0.0   | -3.4 | 97.6  | 6.3   | 106.0                 | 5.1   | Mar.      |   |
| 4月       | 89.0  | -0.3  | -4.8 | 86.1  | 0.1   | 88.6  | -3.0  | 92.5  | -0.1  | -3.5 | 97.9  | 0.3   | 100.9                 | 34.9  | Apr.      |   |
| 5月       | 88.9  | -0.1  | -4.7 | 87.4  | 1.5   | 86.4  | 1.4   | 92.5  | 0.0   | -3.5 | 94.4  | -3.6  | 87.3                  | 75.7  | May       |   |
| 6月       | 88.9  | 0.0   | -4.1 | 87.7  | 0.3   | 87.9  | 7.1   | 92.5  | 0.0   | -3.5 | 98.0  | 3.8   | 102.2                 | 94.3  | Jun.      |   |
| 7月       | 88.9  | 0.0   | -3.8 | 89.2  | 1.7   | 91.7  | 4.4   | 92.5  | 0.0   | -3.5 | 97.9  | -0.1  | 103.9                 | 31.7  | Jul.      |   |
| 8月       | 88.9  | 0.0   | -3.8 | 88.8  | -0.4  | 86.5  | 9.4   | 92.5  | 0.0   | -3.5 | 97.4  | -0.5  | 84.3                  | 19.7  | Aug.      |   |
| 9月       | 89.0  | 0.1   | -3.2 | 89.7  | 1.0   | 89.2  | 10.8  | 92.5  | 0.0   | -3.5 | 93.6  | -3.9  | 98.4                  | 7.4   | Sep.      |   |
| 10月      | 89.0  | 0.0   | -2.9 | 89.3  | -0.4  | 87.4  | 7.8   | 92.5  | 0.0   | -2.8 | 95.0  | 1.5   | 102.4                 | 1.8   | Oct.      |   |
| 11月      | 88.8  | -0.2  | -2.6 | 88.1  | -1.3  | 85.8  | 8.1   | 92.8  | 0.3   | -2.5 | 96.7  | 1.8   | 101.2                 | 4.9   | Nov.      |   |
| 12月      | 88.8  | 0.0   | -1.8 | 88.3  | 0.2   | 88.7  | 3.0   | 92.8  | 0.0   | -2.5 | 98.7  | 2.1   | 91.5                  | 3.9   | Dec.      |   |
| 2022年 1月 | 88.2  | -0.7  | -1.3 | 90.0  | 1.9   | 88.4  | 6.5   | 93.1  | 0.3   | 0.5  | 97.5  | -1.2  | 87.7                  | 2.1   | Jan. 2022 |   |
| 2月       | 88.2  | 0.0   | -1.3 | 89.4  | -0.7  | 87.6  | 5.2   | 93.1  | 0.0   | 0.5  | 97.0  | -0.5  | 95.9                  | 5.7   | Feb.      |   |
| 3月       | 88.1  | -0.1  | -1.3 | 88.8  | -0.7  | 94.4  | 3.3   | 93.1  | 0.0   | 0.5  | 97.4  | 0.4   | 105.8                 | -0.2  | Mar.      |   |
| 4月       | 88.1  | 0.0   | -1.0 | 86.7  | -2.4  | 88.5  | -0.1  | 93.2  | 0.1   | 0.8  | 90.1  | -7.5  | 92.6                  | -8.2  | Apr.      |   |

〈製造工業(除. 機械工業); Manufacturing (excl. Machinery)〉

〈機械工業; Machinery industry〉

|          | 生産能力(末)<br>Production Capacity                              |   |      | 稼働率<br>Operating Ratio                                      |   |   |   | 生産能力(末)<br>Production Capacity                              |   |      | 稼働率<br>Operating Ratio                                      |   |                       |   |           |   |
|----------|---|---|------|---|---|---|---|---|---|------|---|---|-----------------------|---|-----------|---|
|          | 原指数<br>Original Index                                       |   |      | 季節調整済指数<br>Seasonally Adjusted Index                        |   | 原指数<br>Original Index                                       |   | 原指数<br>Original Index                                       |   |      | 季節調整済指数<br>Seasonally Adjusted Index                        |   | 原指数<br>Original Index |   |           |   |
|          | 前月(期)比<br>%Change<br>From<br>Previous<br>Month<br>(Quarter) | 前年<br>(同月期)比<br>%Change<br>From<br>Previous<br>Year |      | 前月(期)比<br>%Change<br>From<br>Previous<br>Month<br>(Quarter) | 前年<br>(同月期)比<br>%Change<br>From<br>Previous<br>Year | 前月(期)比<br>%Change<br>From<br>Previous<br>Month<br>(Quarter) | 前年<br>(同月期)比<br>%Change<br>From<br>Previous<br>Year | 前月(期)比<br>%Change<br>From<br>Previous<br>Month<br>(Quarter) | 前年<br>(同月期)比<br>%Change<br>From<br>Previous<br>Year |      | 前月(期)比<br>%Change<br>From<br>Previous<br>Month<br>(Quarter) | 前年<br>(同月期)比<br>%Change<br>From<br>Previous<br>Year |                       | 前月(期)比<br>%Change<br>From<br>Previous<br>Month<br>(Quarter) |           | 前年<br>(同月期)比<br>%Change<br>From<br>Previous<br>Year |
|          |   |   |      |   |   |   |   |   |   |      |   |   |                       |   |           |   |
| 2019年    | 98.7  |   | -0.4 |   |   | 100.4   | -3.7  | 97.6  |   | -0.5 |   |   | 99.2                  | -2.2  | C.Y. 2019 |   |
| 2020年    | 98.0  |   | -0.7 |   |   | 86.5  | -13.8   | 96.5  |   | -1.1 |   |   | 87.9                  | -11.4   | 2020      |   |
| 2021年    | 96.3  |   | -1.7 |   |   | 93.7  | 8.3   | 95.9  |   | -0.6 |   |   | 94.5                  | 7.5   | 2021      |   |
| 2019年度   | 98.6  |   | -0.4 |   |   | 98.5  | -4.9  | 97.6  |   | -0.5 |   |   | 97.9                  | -3.2  | F.Y. 2019 |   |
| 2020年度   | 97.4  |   | -1.2 |   |   | 87.3  | -11.4   | 96.4  |   | -1.2 |   |   | 87.4                  | -10.7   | 2020      |   |
| 2021年度   | 96.0  |   | -1.4 |   |   | 92.9  | 6.4   | 95.5  |   | -0.9 |   |   | 94.3                  | 7.9   | 2021      |   |
| 2021年 I期 | 97.4  | -0.6  | -1.2 | 96.9  | 2.2   | 98.0  | 3.4   | 96.4  | -0.1  | -1.2 | 93.1  | 3.1   | 93.2                  | -2.1  | Q1 2021   |   |
| II期      | 96.9  | -0.5  | -1.0 | 95.5  | -1.4  | 95.5  | 35.5  | 96.1  | -0.3  | -1.2 | 94.6  | 1.6   | 93.7                  | 18.2  | Q2        |   |
| III期     | 96.2  | -0.7  | -1.5 | 87.0  | -8.9  | 86.9  | 1.8   | 96.1  | 0.0   | -0.7 | 95.1  | 0.5   | 94.6                  | 11.2  | Q3        |   |
| IV期      | 96.3  | 0.1   | -1.7 | 94.7  | 8.9   | 94.6  | -0.5  | 95.9  | -0.2  | -0.6 | 95.1  | 0.0   | 96.4                  | 4.8   | Q4        |   |
| 2022年 I期 | 96.0  | -0.3  | -1.4 | 93.8  | -1.0  | 94.8  | -3.3  | 95.5  | -0.4  | -0.9 | 92.4  | -2.8  | 92.5                  | -0.8  | Q1 2022   |   |
| 2021年 2月 | 97.6  | 0.0   | -1.2 | 95.1  | -2.4  | 93.6  | 2.6   | 96.4  | 0.0   | -1.2 | 91.8  | -1.8  | 88.2                  | -6.2  | Feb. 2021 |   |
| 3月       | 97.4  | -0.2  | -1.2 | 98.3  | 3.4   | 110.7   | 9.7   | 96.4  | 0.0   | -1.2 | 93.9  | 2.3   | 99.6                  | 3.0   | Mar.      |   |
| 4月       | 97.0  | -0.4  | -0.9 | 99.1  | 0.8   | 99.4  | 34.7  | 96.1  | -0.3  | -1.2 | 94.3  | 0.4   | 95.8                  | 9.9   | Apr.      |   |
| 5月       | 96.7  | -0.3  | -1.3 | 90.9  | -8.3  | 82.7  | 39.7  | 96.1  | 0.0   | -1.2 | 94.4  | 0.1   | 91.9                  | 21.2  | May       |   |
| 6月       | 96.9  | 0.2   | -1.0 | 96.6  | 6.3   | 104.5   | 33.1  | 96.1  | 0.0   | -1.2 | 95.2  | 0.8   | 93.5                  | 25.0  | Jun.      |   |
| 7月       | 96.7  | -0.2  | -1.3 | 94.5  | -2.2  | 100.3   | 13.7  | 96.1  | 0.0   | -1.1 | 95.0  | -0.2  | 95.9                  | 13.4  | Jul.      |   |
| 8月       | 96.4  | -0.3  | -1.5 | 89.0  | -5.8  | 77.9  | 7.4   | 96.1  | 0.0   | -1.1 | 95.1  | 0.1   | 92.4                  | 11.6  | Aug.      |   |
| 9月       | 96.2  | -0.2  | -1.5 | 77.4  | -13.0   | 82.4  | -13.8   | 96.1  | 0.0   | -0.7 | 95.3  | 0.2   | 95.6                  | 8.6   | Sep.      |   |
| 10月      | 96.3  | 0.1   | -1.5 | 89.2  | 15.2  | 86.0  | -11.9   | 95.9  | -0.2  | -0.7 | 94.6  | -0.7  | 95.4                  | 3.6   | Oct.      |   |
| 11月      | 96.3  | 0.0   | -1.6 | 98.0  | 9.9   | 100.4   | 7.2   | 95.9  | 0.0   | -0.6 | 95.3  | 0.7   | 96.4                  | 6.2   | Nov.      |   |
| 12月      | 96.3  | 0.0   | -1.7 | 97.0  | -1.0  | 97.3  | 3.4   | 95.9  | 0.0   | -0.6 | 95.5  | 0.2   | 97.3                  | 4.4   | Dec.      |   |
| 2022年 1月 | 95.8  | -0.5  | -1.8 | 92.1  | -5.1  | 84.7  | -5.5  | 95.9  | 0.0   | -0.5 | 94.2  | -1.4  | 92.6                  | 0.8   | Jan. 2022 |   |
| 2月       | 95.8  | 0.0   | -1.8 | 96.0  | 4.2   | 94.5  | 1.0   | 95.5  | -0.4  | -0.9 | 92.4  | -1.9  | 88.8                  | 0.7   | Feb.      |   |
| 3月       | 96.0  | 0.2   | -1.4 | 93.3  | -2.8  | 105.1   | -5.1  | 95.5  | 0.0   | -0.9 | 90.5  | -2.1  | 96.0                  | -3.6  | Mar.      |   |
| 4月       | 95.6  | -0.4  | -1.4 | 93.6  | 0.3   | 91.3  | -8.1  | 95.2  | -0.3  | -0.9 | 90.9  | 0.4   | 91.9                  | -4.1  | Apr.      |   |

## 業種別 能力・稼働率 指数

## Indices of Production Capacity and Operating Ratio (Classification by Industry)

|               | 生産能力(末)<br>Production Capacity |            |                                       |  |                     | 稼働率<br>Operating Ratio               |            |                                       |                     |                         |            |  | Classification  |
|---------------|--------------------------------|------------|---------------------------------------|--|---------------------|--------------------------------------|------------|---------------------------------------|---------------------|-------------------------|------------|--|---|
|               | 原 指 数<br>Original Index        |            |                                       |  |                     | 季節調整済指数<br>Seasonally Adjusted Index |            |                                       |                     | 原 指 数<br>Original Index |            |  |   |
|               | 3月<br>Mar.                     | 4月<br>Apr. | 前月比<br>%Change From<br>Previous Month | 前年同月比<br>%Change From<br>Previous Year | 寄与度<br>Contribution | 3月<br>Mar.                           | 4月<br>Apr. | 前月比<br>%Change From<br>Previous Month | 寄与度<br>Contribution | 3月<br>Mar.              | 4月<br>Apr. | 前年同月比<br>%Change From<br>Previous Year |   |
|               |                                |            |                                       |  |                     |                                      |            |                                       |                     |                         |            |  |   |
| 製造工業          | 95.8                           | 95.4       | -0.4                                  | -1.2                                   |                     | 92.7                                 | 92.7       | 0.0                                   |                     | 101.4                   | 91.5       | -6.6                                   | Manufacturing   |
| 鉄鋼・非鉄金属工業     | 95.4                           | 94.4       | -1.0                                  | -1.6                                   | -0.08               | 94.4                                 | 94.7       | 0.3                                   | 0.03                | 100.5                   | 94.3       | -2.8                                   | Iron, steel and Non-ferrous metals  |
| 鉄鋼業           | 93.5                           | 92.0       | -1.6                                  | -2.2                                   | -0.08               | 92.1                                 | 91.9       | -0.2                                  | -0.01               | 97.7                    | 91.2       | -4.1                                   | Iron and steel  |
| 非鉄金属工業        | 99.2                           | 99.2       | 0.0                                   | -0.3                                   | 0.00                | 100.5                                | 100.8      | 0.3                                   | 0.01                | 106.5                   | 100.7      | -0.2                                   | Non-ferrous metals  |
| 金属製品工業        | 98.5                           | 98.7       | 0.2                                   | 0.3                                    | 0.01                | 88.7                                 | 90.8       | 2.4                                   | 0.10                | 97.5                    | 92.7       | -4.0                                   | Fabricated metals   |
| 生産用機械工業       | 107.6                          | 106.7      | -0.8                                  | 2.0                                    | -0.08               | 92.1                                 | 89.8       | -2.5                                  | -0.23               | 109.2                   | 86.0       | -3.5                                   | Production machinery  |
| 汎用・業務用機械工業    | 96.7                           | 97.4       | 0.7                                   | 3.3                                    | 0.05                | 110.1                                | 111.2      | 1.0                                   | 0.08                | 121.6                   | 110.7      | -5.1                                   | General-purpose and business oriented machinery                               |
| 電子部品・デバイス工業   | 97.2                           | 96.9       | -0.3                                  | -2.1                                   | -0.02               | 95.6                                 | 109.8      | 14.9                                  | 1.17                | 97.5                    | 106.0      | 4.5                                    | Electronic parts and devices  |
| 電気・情報通信機械工業   | 90.6                           | 89.4       | -1.3                                  | -2.9                                   | -0.18               | 94.8                                 | 94.0       | -0.8                                  | -0.10               | 109.4                   | 94.8       | -10.1                                  | Electrical machinery, and Information and communication electronics equipment |
| 電気機械工業        | 98.2                           | 96.9       | -1.3                                  | 0.1                                    | -0.13               | 96.5                                 | 93.1       | -3.5                                  | -0.29               | 107.6                   | 100.2      | -11.3                                  | Electrical machinery  |
| 情報通信機械工業      | 77.8                           | 76.6       | -1.5                                  | -9.1                                   | -0.07               | 93.3                                 | 95.5       | 2.4                                   | 0.08                | 113.7                   | 81.6       | -5.7                                   | Information and communication electronics equipment                           |
| 輸送機械工業        | 94.6                           | 94.8       | 0.2                                   | -3.2                                   | 0.04                | 88.1                                 | 88.0       | -0.1                                  | -0.03               | 98.9                    | 81.0       | -14.7                                  | Transport equipment   |
| 窯業・土石製品工業     | 92.0                           | 92.1       | 0.1                                   | -0.8                                   | 0.01                | 88.9                                 | 91.9       | 3.4                                   | 0.14                | 93.4                    | 90.0       | -3.7                                   | Ceramics, stone and clay products   |
| 化学工業          | 96.9                           | 96.8       | -0.1                                  | -1.1                                   | -0.02               | 89.4                                 | 90.6       | 1.3                                   | 0.19                | 91.3                    | 90.7       | -6.5                                   | Chemicals   |
| 石油・石炭製品工業     | 88.4                           | 88.4       | 0.0                                   | 0.0                                    | 0.00                | 90.7                                 | 94.4       | 4.1                                   | 0.06                | 96.6                    | 93.4       | 11.1                                   | Petroleum and coal products   |
| パルプ・紙・紙加工品工業  | 98.2                           | 96.4       | -1.8                                  | -3.4                                   | -0.05               | 92.8                                 | 94.5       | 1.8                                   | 0.05                | 100.0                   | 95.3       | -0.1                                   | Pulp, paper and paper products  |
| その他工業         | 90.9                           | 91.0       | 0.1                                   | 0.0                                    | 0.01                | 94.1                                 | 89.0       | -5.4                                  | -0.32               | 101.1                   | 90.9       | -5.1                                   | Other manufacturing   |
| 繊維工業          | 88.1                           | 88.1       | 0.0                                   | -1.0                                   | 0.00                | 88.8                                 | 86.7       | -2.4                                  | -0.05               | 94.4                    | 88.5       | -0.1                                   | Textiles  |
| その他製品工業       | 93.1                           | 93.2       | 0.1                                   | 0.8                                    | 0.00                | 97.4                                 | 90.1       | -7.5                                  | -0.27               | 105.8                   | 92.6       | -8.2                                   | Other products  |
| 《参考》          |                                |            |                                       |  |                     |                                      |            |                                       |                     |                         |            |  |   |
| 機械工業          | 96.0                           | 95.6       | -0.4                                  | -1.4                                   | -0.24               | 93.3                                 | 93.6       | 0.3                                   | 0.19                | 105.1                   | 91.3       | -8.1                                   | Machinery industry  |
| 製造工業(除. 機械工業) | 95.5                           | 95.2       | -0.3                                  | -0.9                                   | -0.13               | 90.5                                 | 90.9       | 0.4                                   | 0.18                | 96.0                    | 91.9       | -4.1                                   | Manufacturing (excl. Machinery)   |