

Survey Form for Overseas Affiliates: Guide for Completing the Survey

Request

Please provide figures for the most recent fiscal period, as of March 31, 2026. Before completing the survey form, please refer to the “Precautions” on the following pages, and submit it to the Survey Secretariat by July 15, 2026.

Contents

I. Precautions	p.1
II. About Each Survey Item	
1. Overseas affiliate profile	p.5
2. Investment Status	p.6
3. Operation status	p.6
4. Date of dissolution, withdrawal, or decrease in ownership percentage	p.7
5. Employment situation	p.7
6. Business activities	p.8
7. Expenses, income/appropriation of profits, and research and development	p.11
8. Capital investment	p.12
III. Tables	
1. Regional and National Classification (including Currency Conversion Table)	p.13
2. States of United States of America	p.16
3. Provinces of People's Republic of China	p.16
4. Industrial Classification Code Table	p.17

Contact information

Survey Secretariat for Basic Survey of Japanese Business Structure and Activities

URL

<https://www.meti.go.jp/statistics/tyo/kikatu/index.html>

I . Precautions

1 Survey objective

The Basic Survey of Japanese Business Structure and Activities is conducted annually with the aim of clarifying the actual business activities of Japanese companies and providing basic data for enterprise-related policymaking. Starting with the “2026 Survey”, in light of the ongoing globalization of corporate activities and with the aim of grasping the actual situation of Japanese companies including overseas expansion, survey items concerning the business activities of overseas affiliates in which companies hold voting rights above a certain threshold have been added.

2 Legal basis for the survey and confidentiality

This is a fundamental statistical survey under the Statistics Act (Act No. 53 of 2007), and companies subject to the survey are obligated to report.

Confidentiality of data reported herein is preserved under the Statistics Act. Consequently, filled-in information may not be applied for purposes beyond the scope of the survey, such as tax collection (Article 41 of the Statistics Law).

3 Survey targets

“Overseas affiliate” refers to a foreign corporation in which a company covered by the Basic Survey of Japanese Business Structure and Activities holds 20% or more of the voting rights, or is able to exert significant influence, even if it holds 15% or more but less than 20% voting rights.

* Refer to the “Decision Criteria (Flowchart)” on page 3.

4 Survey method

This is a written survey, and the survey documents are sent by mail to the parent companies. Each parent company is requested to complete the survey and return the completed forms. Responses may also be submitted through the online survey system.

In addition, the survey secretariat may contact the respondents by phone or other means, if necessary, to confirm the details.

5 Deadline for submitting survey forms

Please be sure to return the completed survey forms so that they arrive by **July 15, 2026**, at the latest.

6 Publication of survey results

The accumulated data of this survey is compiled according to the type of industry, region, etc., and is to be analyzed and published by the Structural and Enterprise Statistics Office of the Research and Statistics Department of Ministry of Economy, Trade, and Industry.

7 Reference Date and Survey Year

Please enter figures for the “most recent fiscal period.”

(1) For semi-annual accounting periods, please total the most recent period and the preceding period, and report them as annual figures.

(2) If it is difficult to provide annual figures due to the transition period for changing fiscal years, figures for the fiscal period after the change may be entered; however, in the remarks column, please indicate that the accounting period is from xx xx, 20xx to xx xx, 20xx.

8 Entering Figures

- (1) Please fill in the survey form **on a non-consolidated basis**.
- (2) Please round off to the nearest unit.
- (3) Right-align the figures in each column, and put one digit in each box.
- (4) For negative amounts, place the “△” symbol in front of the figure.
Example

			△	1	2	3
--	--	--	---	---	---	---
- (5) If it is extremely difficult to calculate an accurate figure, it is acceptable to provide an approximate or estimated amount.
- (6) For amount fields, enter amounts rounded to the nearest million yen.
If the rounded amount is less than one million yen, enter “0”.
- (7) **For fields with no amounts or figures to enter, leave them blank.**

9 Conversion of monetary amounts to yen

- (1) **Please enter all monetary amounts in yen**, rounded to the nearest one million yen.
- (2) Please convert foreign-currency amounts into yen in accordance with “Table 1: Regional and National Classification (including currency conversion table).”
- (3) If the rounded amount is less than one million yen, please enter “0.” In such cases, write the amount in the local currency and the exchange rate in the remarks column.
- (4) For capital amounts, please convert them using the exchange rate that was applied at the time the investment was made.
- (5) If it is extremely difficult to calculate an accurate figure, it is acceptable to provide an approximate or estimated amount.

10 Filling in the survey form

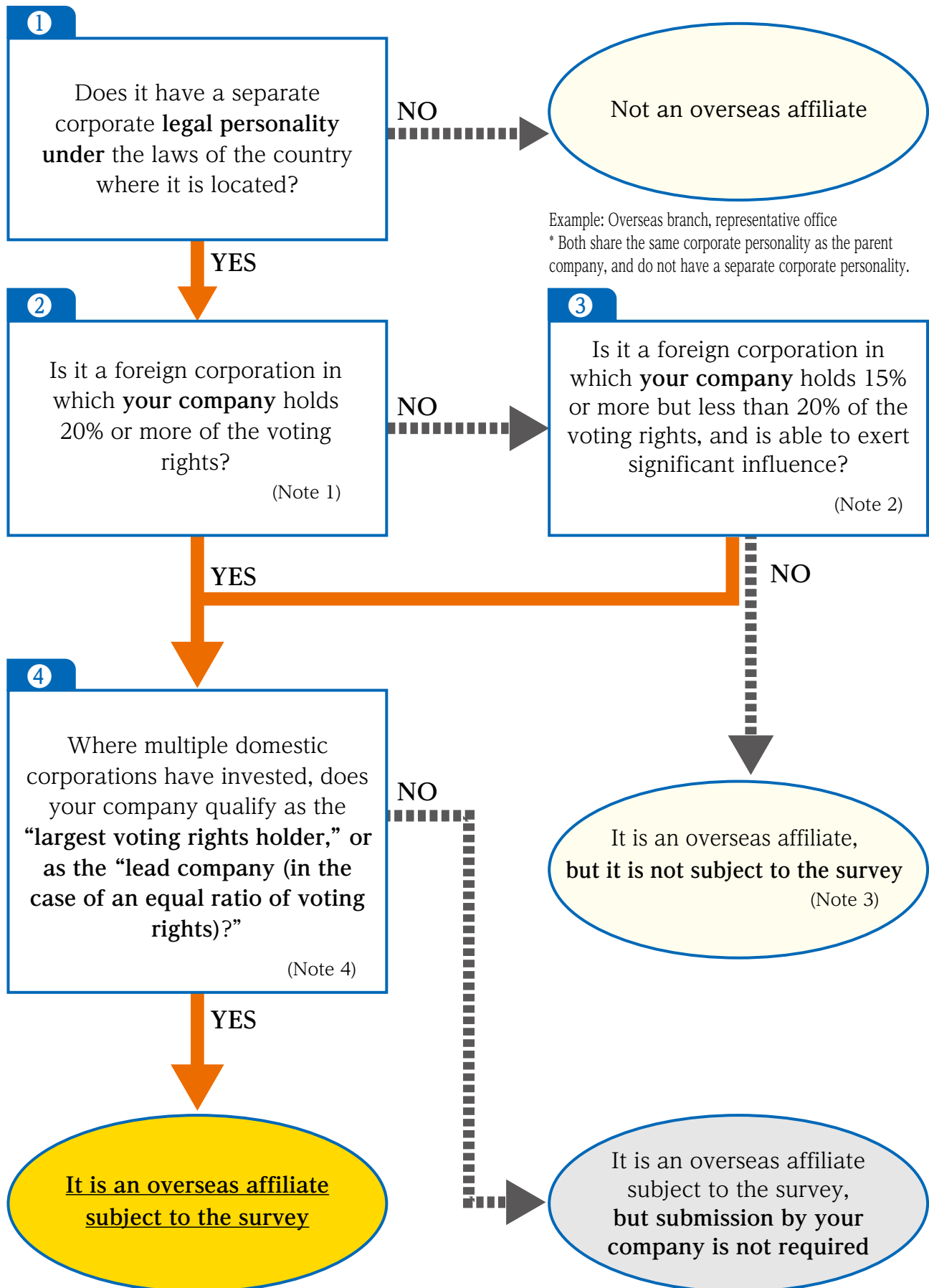
- (1) As of March 31, 2026, please complete one “Overseas Affiliates Survey Form” for each overseas affiliate owned by the parent company, including those that existed at any point between April 1, 2025 and March 31, 2026.
If you do not have enough survey forms, please contact the survey secretariat listed on the cover page, or make photocopies of the form and use them.
- (2) In the case of multiple Japanese investors
If an overseas affiliate is jointly invested in by multiple Japanese investors, the parent company with the largest Japanese ownership share should complete the form. If the ownership shares are equal, the lead company should complete the form.
- (3) The Survey Form for Overseas Affiliates and the guide for completing the survey are available in English as well as Japanese. They are also posted on the Ministry of Economy, Trade and Industry(METI) website below for your reference.

<https://www.meti.go.jp/statistics/tyo/kikatu/index.html>

11 Submitting the survey forms via Electronic Media such as CD

If you wish to submit the survey forms via electronic media such as a CD, please be sure to contact the survey secretariat listed on the cover page before creating the data. The designated format will be provided. Please note that any format other than the designated one cannot be accepted.

Decision criteria (flowchart) for submitting the Survey Form for Overseas Affiliates

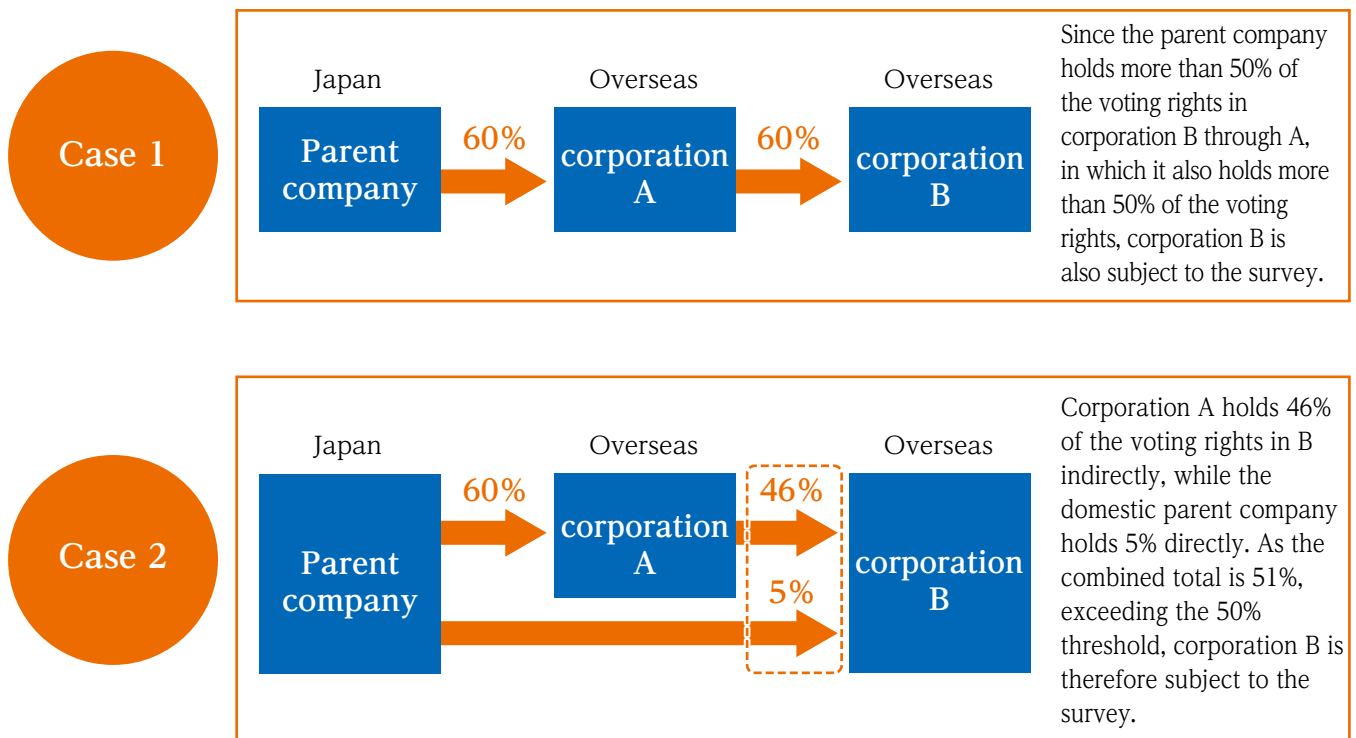


(Note 1) The following types of “overseas affiliates” (those with an indirect voting rights ratio exceeding 50%) are also subject to this survey.

Case 1: An “overseas affiliate” in which your company owns more than 50% of the voting rights through another “overseas affiliate” in which your company owns more than 50% of the voting rights

Case 2: An “overseas affiliate” in which your company, together with another “overseas affiliate” in which your company holds more than 50% of the voting rights, holds more than 50% of the voting rights

Example



(Note 2) “Significant influence” refers to cases where specific conditions are met, such as “dispatching executives,” “significant loans,” “technology provision,” and “business transactions,” which can exert a significant influence on management.

(Note 3) Corporations that only have management-related contractual matters, such as “franchise agreements,” “license agreements,” or “agency agreements”, are not included. The judgment is based solely on the percentage of voting rights ownership in the flowchart mentioned above.

(Note 4) In cases where multiple domestic corporations have invested, if the “largest voting rights holder” is a pure holding company and your company has the next highest percentage of voting rights ownership, please submit the survey form for the overseas affiliate in question.

II. About Each Survey Item

On the first page of the Survey Form for Overseas Affiliates, for “Contact for inquiries about the entries,” **1 Overseas affiliate profile**, and **2 Investment Status**, the information your company reported up to the previous fiscal year has been pre-filled. If there are any changes, please strike out the relevant portions with “” and make the appropriate corrections. If an item is not pre-filled, please make sure to fill it in.

Contact for inquiries about entries

● Headquarters name

Please enter the name of the company as stated on the survey form for headquarters.

● Name of respondent

Please enter the name of the person in charge who completed the survey forms.

● Corporate number

Enter the corporate number (13 digits) of the headquarters.

● Department/telephone number

Please enter the name of the department of the person in charge who completed the survey form, and their department’s telephone number, starting with the area code.

1 Overseas affiliate profile

101 Name of overseas affiliate

Please enter the name of an overseas affiliate in alphabet letters such as ABC, all in uppercase. Please do the same for affiliates in the People’s Republic of China as well.

(e.g.) 上海經產電機有限公司 → SHANGHAI KEISAN ELECTRIC CO. LTD.

102 Country/region classification

For the country or region in which the overseas affiliate is located, please refer to the attached “Table 1. Regional and National Classification,” and enter the corresponding three-digit country/region code and country/region name.

Please note that Hong Kong has a different country/region number from that of the People’s Republic of China.

103 State/province classification

In the case where the country classification is the United States or the People's Republic of China, please also refer to the attached “Table 2. States of the United States of America” or “Table 3. Provinces of the People’s Republic of China” respectively, and enter the corresponding two-digit state/province code and state/province name.

104 Industry classification

Please refer to the attached “Table 4. Industrial Classification”, which is based on the Japan Standard Industry Classification, and enter the corresponding industrial classification code and industry name.

For this survey, if the industry name is not clear, please describe the business activities of the foreign affiliate in detail. If it is engaged in multiple industries, please select the industry with the largest profits or sales.

105 Year and month of establishment/capital participation

Please enter the year and month in which the overseas affiliate was established.

If the time of establishment is different from that of capital participation, please enter the time of the capital participation.

106 Fiscal year-end month

Please enter the fiscal year-end month for the financial statements in two-digit format. If there are multiple fiscal year-ends, please provide the details in the remarks column.

2 Investment Status

201 Capital or investment

Please enter the amount of paid-in capital of the overseas affiliate as of the most recent fiscal year-end, not the amount of authorized capital.

When converting the amount into yen, please use the exchange rate that was applied at the time the capital investment was made, without reflecting subsequent exchange-rate fluctuations. If additional capital was injected, please convert that portion using the exchange rate applicable at the time of the capital increase. (Accordingly, unless an actual capital increase or decrease occurs, the amount entered in this field will not change even if exchange rates fluctuate.)

202 Ratio of Japanese Investment

At the most recent fiscal year-end, enter the investment ratio of the Japanese side (including your company) in the overseas affiliate, right aligned, to one decimal place (rounding the second decimal place).

The method for calculating the ownership ratio in the case of indirect investment is as follows.

Example: Company A (Japan) → (80% investment) Overseas Affiliate B

→ (60% investment) Overseas Affiliate C; $80\% \times 60\% = 48\%$

If there is also a direct 5% investment from Company A to Company C: $48\% + 5\% = 53\%$

3 Operation status

301 Operation status

Please circle the number that applies to the operating status of the overseas affiliate as of the survey date (March 31, 2026).

1. In operation

This refers to a situation in which the overseas affiliate is actually operating or conducting business.

If this applies, please complete all subsequent items except **4 Date of dissolution, withdrawal, or decrease in ownership percentage**.

2. Before the first fiscal year-end

This refers to a situation in which the overseas affiliate has been established and has begun business operations but has not yet concluded its first fiscal period.

3. Not established or has not started operations

“Not established” refers to a situation in which, although investment notifications, etc. have been filed, the corporation has not yet been established. “Has not started operations” refers to a situation in which the corporation has been established but has not begun its operations.

4. Business operations suspended

This refers to a situation in which no business operations are being conducted.

5. Dissolution, withdrawal, or decrease in ownership percentage

“Dissolution” refers to a situation in which the overseas affiliate ceases its business activities and enters a process leading to the termination of its legal entity status. Dissolution includes liquidation (procedures for settling the affiliate’s legal affairs after dissolution for reasons other than merger) as well as cases of bankruptcy or insolvency.

“Withdrawal” refers to a situation in which the overseas affiliate is sold, absorbed, merged, consolidated (integration of multiple overseas affiliates belonging to the same Japanese parent company), or relocated, resulting in the affiliate ceasing to exist at its original location and the total Japanese equity ownership ultimately becoming 0%.

“Decrease in ownership percentage” refers to a situation in which the total share of Japanese investment in the overseas affiliate falls below 15% (more than 0% but less than 15%). This includes cases where the ownership share is 15% or more but less than 20%, and significant influence cannot be exerted.

If any of the above apply, please complete only **4 Date of dissolution, withdrawal, or decrease in ownership percentage**.

4 Date of dissolution, withdrawal, or decrease in ownership percentage

411 Date of dissolution, withdrawal, or decrease in ownership percentage

Please circle the number corresponding to the date of dissolution, withdrawal, or decrease in ownership percentage, whichever applies to the overseas affiliate.

- 1 On or before March 31, 2025
- 2 From April 1, 2025 to March 31, 2026

5 Employment situation

501 Number of regularly employed persons

Please enter the total number of paid directors and regular employees (including those dispatched from the Japanese side) as of the most recent fiscal year-end.

“Regular employees” refers to persons who are employed either without a fixed term or for a fixed term of one month or longer, regardless of job titles such as regular employee, full-time staff, part-time worker, temporary employee, or contract employee.

502 Number of the persons dispatched from the Japanese side

Of the number of regularly employed persons in item 501, please fill in the number of the employees dispatched from the Japanese side, regardless of whether their salaries are paid by the overseas affiliate.

6 Business activities

6-1. Sales

For items 612 to 623, if you cannot enter amounts, please enter their percentage of the amount entered in “611 Total sales”.

611 Total sales

Please fill in sales (operating revenue) from the income statement (in principle, a positive amount, excluding adjustments due to returns). Sales refers to the total amount for the most recent fiscal year of the following: sales of in-house mineral products; sales of in-house manufactured products; processing fees revenue (fees earned for processing raw materials, semi-finished products, or parts supplied by other companies); sales of purchased merchandise; and revenue from other business activities (completed construction sales in the construction industry; revenue from agriculture, forestry and fisheries, revenue from restaurants or service industries, etc.; in the case of agents and intermediaries, enter commission income, not the gross merchandise handling amount).

Regarding exports of goods (exports to Japan and exports to third countries), please enter the value of direct exports for which the overseas affiliate completed customs documentation procedures under its own name. If services or other non-goods transactions were exported, please include the value of those exports as well. If the contracting party differs from the actual country of destination, please enter the amount based on the actual destination.

* $611.\text{Total sales} = 612.\text{Exports to Japan} + 615.\text{Local sales} + 619.\text{Exports to third countries}$

612 Exports to Japan

Of the total sales for the most recent fiscal year, please fill in [the amount of exports to Japan](#).

* $612.\text{Exports to Japan} = 613.\text{To parent company} + 614.\text{To other companies}$

613 To parent company

Of the total amount of exports to Japan, please fill in the amount exported to the [parent company in Japan](#). If the overseas affiliate is a sub-subsidiary, please enter the amount exported to the company in Japan that is the parent company of the affiliate’s own parent company (which is located overseas).

614 To other companies

Of the total amount of exports to Japan, please enter the amount exported to [companies in Japan other than the parent company reported in item 613](#).

Please also include exports to individuals here in this item.

615 Local sales

Of the total sales for the most recent fiscal year, please fill in the amount of [sales made within the country where the overseas affiliate is located](#).

* $615.\text{Local sales} = 616.\text{To Japanese companies} + 617.\text{To local companies} + 618.\text{To other companies}$

616 To Japanese companies

Of the sales made within the country where the overseas affiliate is located, please enter the amount of sales made [to Japanese companies](#).

617 To local companies

Of the sales made within the country where the overseas affiliate is located, please enter the amount of sales made [to local companies \(i.e., companies of the host country\)](#).

618 To other companies

Of the sales made within the country where the overseas affiliate is located, please enter the amount of sales made [to companies other than those in 616 and 617](#).

Please also include sales to individuals here in this item.

619 Exports to third countries

Of the total sales for the most recent fiscal year, please fill in the total amount of exports other than “612. Exports to Japan.” Sales made in the country where the overseas affiliate is located should be entered in “615. Local sales,” not in “619. Exports to third countries.”

(e.g.) If an overseas affiliate located in the United States makes sales within the United States, please fill in the relevant amount in the “Local sales” column. If the overseas affiliate makes sales in Canada, please fill in the relevant amount in the “Exports to third countries” and “North America” columns.

*** 619. Exports to third countries = 620. North America + 621. Asia + 622. Europe + 623. Other regions**

620 - 623 North America - Other regions

Please allocate the amount entered in “619. Exports to third countries” to “620. North America”, “621. Asia”, “622. Europe” and “623. Other regions”, and fill in each amount.

****Notes for overseas affiliates located in Mainland China and Hong Kong****

Overseas Affiliates in Mainland China

- If the affiliate made sales in Mainland China: enter the amount in “615. Local sales.”
- If the affiliate made sales to Hong Kong: enter the amount in “619. Exports to third countries (621. Asia).”

Overseas Affiliates in Hong Kong

- If the affiliate made sales in Hong Kong: enter the amount in “615. Local sales.”
- If the affiliate made sales to Mainland China: enter the amount in “619. Exports to third countries (621. Asia).”

6-2. Purchases

For 625 to 636, if you cannot enter amounts, please enter the percentage of the amount entered in “624 Total purchases.”

624 Total purchases

Please fill in the total amount of purchases of raw materials, parts, semi-finished products, etc., and merchandise from other companies for the most recent fiscal year.

For imports (from Japan and third countries), enter the total value of direct imports for which the overseas affiliate completed customs documentation procedures under its own name. If services or other non-goods transactions were imported, please include the value of those imports as well. If the contracting party differs from the actual country from which the goods or services were imported, please enter the amount based on the actual country of origin.

*** 624. Total purchases = 625. Imports from Japan + 628. Local purchases + 632. Imports from third countries**

625 Imports from Japan

Of the total purchases for the most recent fiscal year, please fill in the amount of imports from Japan.

*** 625. Imports from Japan = 626. From parent company + 627. From other companies**

626 From parent company

Of the total amount of imports from Japan, please fill in the amount of imports from the parent company in Japan. If the overseas affiliate is a sub-subsidiary, please enter the amount imported from the company in Japan that is the parent company of the affiliate’s own parent company (which is located overseas).

627 From other companies

Of the total amount of imports from Japan, please fill in the amount imported from companies in Japan other than the parent company reported in item 626.

Please also include purchases from individuals here in this item.

628 Local purchases

Of the total purchases for the most recent fiscal year, please fill in the [amount of purchases made within the country where the overseas affiliate is located](#).

* **628. Local purchases = 629. From Japanese companies + 630. From local companies + 631. From other companies**

629 From Japanese companies

Of the purchases made within the country where the overseas affiliate is located, please enter the amount of purchases made [from Japanese companies](#).

630 From local companies

Of the purchases made within the country where the overseas affiliate is located, please enter the amount of sales made from [local companies \(i.e., companies of the host country\)](#).

631 From other companies

Of the purchases made within the country where the overseas affiliate is located, please enter the amount of purchases made from [companies other than those in 629 and 630](#). Please also include purchases from individuals here in this item.

632 Imports from third countries

Of the total purchases for the most recent fiscal year, please fill in the total amount of imports from countries [other than Japan](#).

Purchases from the country in which the overseas affiliate is located should be entered in “628. Local purchases”, not in “632. Imports from third countries.”

(e.g.) When an overseas affiliate located in the United States made purchases from the United States, please fill in the relevant amount in the “Local purchases” column. When the overseas affiliate made purchases from Canada, please fill in the relevant amount in the “Imports from third countries” and “North America” columns.

* **632. Imports from third countries = 633. North America + 634. Asia + 625. Europe + 636. Other regions**

633 - 636 North America - Other regions

Please allocate the amount entered in “632. Imports from third countries” to “633. North America,” “634. Asia,” “635. Europe” and “636. Other regions”, and fill in each amount.

****Notes for overseas affiliates located in Mainland China and Hong Kong****

[Overseas Affiliates in Mainland China](#)

- If the affiliate made purchases in Mainland China: enter the amount in “628. Local purchases.”
- If the affiliate made purchases from Hong Kong: enter the amount in “632. Imports from third countries (634. Asia).”

[Overseas Affiliates in Hong Kong](#)

- If the affiliate made purchases in Hong Kong: enter the amount in “628. Local purchases.”
- If the affiliate made purchases from Mainland China: enter the amount in “632. Imports from third countries (634. Asia).”

7 Expenses, income/appropriation of profits, and research and development

7-1. Operating expenses

711 Cost of goods sold

Please enter the total cost of goods sold of the overseas affiliate, such as manufacturing costs (materials, labor, and overhead expenses required for production) and the cost of goods purchased. For the construction industry, please enter the cost of construction work.

712 Selling, general and administrative expenses

Please enter the total amount of selling, general and administrative expenses, which include costs incurred for sales activities and overall corporate administration, such as salaries, travel expenses, advertising, data processing, communication expenses, real estate rent, and rental fees for equipment and other movable property.

713 Total payroll

Please enter the total amount of salaries and wages paid or payable, including basic salary, various allowances, and bonuses, whether paid on a regular or irregular basis. The amount should be reported on a gross basis, i.e., before deducting income tax, local taxes, social insurance contributions (such as health insurance and employees' pension insurance), and labor insurance premiums. However, please exclude the portion of statutory social insurance and labor insurance contributions that is borne by the company. Please provide the combined total of salaries included in the cost of goods sold and those included in selling, general, and administrative expenses.

714 Rental expenses

Please enter the total amount of rental expenses for real estate, such as land and buildings, and for movable property, such as mining machinery, manufacturing machinery, vehicles, display cases, and office equipment. Please enter the combined total of rental expenses included in the cost of goods sold and those included in selling, general and administrative expenses.

7-2. Income/appropriation of profits

721 Ordinary profit

Please enter the total amount of operating and non-operating profit or loss. In the case of a loss, please place a "△" symbol before the figure.

This amount can also be calculated using the following formula:

$$\text{Ordinary profit and loss} = (\text{Sales} - \text{Cost of goods sold} - \text{Selling, general and administrative expenses}) \\ + (\text{Non-operating income} - \text{Non-operating expenses})$$

722 Corporate taxes

Please enter the amount of taxes to be paid for the most recent fiscal year, such as corporate taxes, inhabitant taxes, and other taxes payable (i.e., taxes deducted from income before taxes), without using a "△" symbol.

723 Net profit for the period

Please calculate the amount using the following formula. In the case of a loss, please place a "△" symbol before the figure.

$$\text{Net profit for the period} = \text{Ordinary profit} + \text{Extraordinary income} - \text{Extraordinary loss} - \text{Corporate taxes}$$

If there are adjustment amounts for corporate taxes, please enter the net profit for the period (or "△" for a net loss for the period) after incorporating such adjustments.

724 Retained earnings for the period

Please enter the amount of retained earnings accumulated for the most recent fiscal year through the appropriation of profit.

If the amount is negative, please place a “△” symbol before the figure.

If the amount is unknown, please calculate it using the following formula:

Retained earnings for the period = Current profit or loss after tax – Dividends

725 Retained earnings at the end of fiscal 2025

Please enter the balance of retained earnings at the end of the most recent fiscal year, which is calculated according to the following formula. If the balance is negative, please place a “△” symbol before the figure.

Retained earnings at fiscal year-end = Equity – Capital stock – Capital reserve

If there are any paid-in advances on new shares at the end of the most recent fiscal year, please deduct them from equity in the same way as capital stock and capital reserve when calculating the balance.

7-3. Payments to investors

731 Payments to Japanese investors

Please enter the total amount paid by the overseas affiliate to its Japanese investors, including dividends, royalties, interest on loans, technical guidance fees, and other such payments, based on fiscal results. However, please exclude payments for purchases from Japanese investors.

732 Dividends

Of the total payments to Japanese investors (731), please fill in the dividends paid in proportion to the Japanese investors' equity participation.

733 Royalties

Of the total payments to Japanese investors (731), please fill in the royalties for intellectual property rights provided by the Japanese investors, such as patents and copyrights.

734 Payments to non-Japanese investors

Please enter the total amount paid by the overseas affiliate to [investors other than](#) Japanese investors, including dividends, royalties, interest on loans, technical guidance fees, etc., based on the fiscal results.

7-4. Research and development expenses

741 Research and development expenses

Please enter the amount of personnel expenses and non-personnel expenses for research and development (R&D), including depreciation of R&D-related tangible fixed assets, contributions to joint research, and research consignment expenses.

“R&D” refers to creative efforts and pursuits for the purpose of obtaining new knowledge about materials, functions, or phenomena, or for the purpose of developing new applications of existing knowledge.

For manufacturing companies, this concept includes not only research but also development and technical improvements aimed at enhancing products or production and manufacturing processes.

R&D expenses refer to the costs incurred in carrying out these activities.

8 Capital investment

801 Capital investment

Please enter the acquisition cost of tangible fixed assets before depreciation for the most recent fiscal year, including construction in progress and excluding land.

Table 1 Regional and National Classification (including Currency Conversion Table)

Code	Region/Country	Currency	Yen	Code	Region/Country	Currency	Yen
NORTH AMERICA				ASIA			
101	United States	Dollar	149.66	302	India	Rupee	1.72
102	Canada	Dollar	106.90	303	Pakistan	Rupee	0.53
CENTRAL/SOUTH AMERICA				304	Bangladesh	Taka	1.23
201	Mexico	Peso	7.78	305	Sri Lanka	Rupee	0.49
202	Panama	Balboa	149.66	306	Myanmar	Kyat	-
203	El Salvador	Dollar	149.66	307	Malaysia	Ringgit	34.97
204	Brazil	Real	26.77	308	Singapore	Dollar	114.24
205	Argentina	Peso	0.12	309	Thailand	Baht	4.55
206	Paraguay	Guarani	0.020	310	Indonesia	Rupiah	0.0091
207	Chile	Peso	0.16	311	Philippines	Peso	2.60
208	Peru	Nuevo Sol	41.92	312	Cambodia	Riel	0.037
210	Venezuela		-	313	Laos	Kip	0.0073
211	Bolivia	Boliviano	21.66	314	Hong Kong	Dollar	19.19
212	Bahamas	Dollar	149.66	315	Taiwan	Dollar	4.80
213	Colombia	Peso	0.037	316	Vietnam	Dong	0.0060
214	Guatemala	Quetzal	19.49	317	Korea	Won	0.11
215	Ecuador	Dollar	149.66	318	Nepal	Rupee	1.08
217	Nicaragua	Cordoba	4.09	319	Brunei Darussalam	Dollar	114.24
218	Costa Rica	Colon	0.30	320	China (excl.Hong Kong)	Yuan	20.82
219	Trinidad Tobago	Dollar	22.17	321	Macau	Pataca	18.64
220	British Bermuda	Dollar	149.66	322	Mongolia	Tugrik	0.042
221	Puerto Rico	Dollar	149.66	399	Others		-
223	Honduras	Lempira	5.77		Timor-Leste		
225	Jamaica	Dollar	0.94		Bhutan		
227	Cayman Islands	Dollar	179.59		Maldives		
228	Virgin Islands	Dollar	149.66				
229	Uruguay	Peso	3.63				
299	Others		-				
	Commonwealth of Dominica	French West Indies					
	Cuba	Suriname					
	Saint Lucia	Guyana					
	Saint Christopher and Nevis	Dominican Republic					
	Antigua and Barbuda						
	Haiti						
	Belize						

Table 1 Regional and National Classification (including Currency Conversion Table)

Code	Region/Country	Currency	Yen	Code	Region/Country	Currency	Yen
MIDDLE EAST				EUROPE			
401	Iran	Rial	0.0036	501	U.K.	Pound	196.92
402	Israel	New Sheqel	43.38	502	France	Euro	170.07
403	Kuwait	Dinar	482.77	503	Germany	Euro	170.07
404	Lebanon	Pound	0.0017	504	Belgium	Euro	170.07
405	Saudi Arabia	Riyal	39.91	505	Ireland	Euro	170.07
406	U.A.E.	Dirham	40.78	506	Switzerland	Franc	180.31
408	Bahrain	Dinar	393.84	507	Portugal	Euro	170.07
409	Qatar	Riyal	41.12	508	Holland	Euro	170.07
411	Iraq	New Dinar	0.12	509	Italy	Euro	170.07
412	Sultanate of Oman	Rial	393.84	510	Luxembourg	Euro	170.07
413	Jordan	Jordan Dinar	210.79	511	Spain	Euro	170.07
499	Others		-	512	Greece	Euro	170.07
	Afghanistan			513	Malta	Euro	170.07
	Syria			514	Austria	Euro	170.07
				515	Norway	Krone	14.39
				516	Denmark	Krone	22.61
				518	Sweden	Krona	15.24
				519	Turkey	Lira	3.79
				520	Romania	Leu	33.48
				521	Finland	Euro	170.07
				522	Monaco	Euro	170.07
				523	Cyprus	Euro	170.07
				524	Poland	Zloty	39.80
				525	Russia	Ruble	1.76
				526	Hungary	Forint	0.42
				527	Czech Republic	Koruna	6.84
				528	Slovakia	Euro	170.07
				530	Slovenia	Euro	170.07
				531	Estonia	Euro	170.07
				532	Latvia	Euro	170.07
				533	Lithuania	Euro	170.07
				534	Bulgaria	Lev	86.01
				535	Croatia	Kuna	170.07
				536	Ukraine	Hryvnya	3.59
				537	Kazakhstan	Tenge	0.29
				538	Republic of Uzbekistan	Sum	0.012
				539	Montenegro	Euro	170.07
				540	Republic of Serbia	Serbia Dinar	1.44
				541	Republic of Azerbaijan	Azerbaijani manat	88.04
				542	Kyrgyz Republic	Kyrgyz Som	1.72
				599	Others		-
					Albania	Tajikistan	
					Armenia	Turkmenistan	
					Andorra	Vatican	
					Georgia	Belarus	
					San Marino	Bosnia and Herzegovina	
					Iceland	Liechtenstein	

Table 1 Regional and National Classification (including Currency Conversion Table)

Code	Region/Country	Currency	Yen
OCEANIA			
601	Australia	Dollar	96.55
602	New Zealand	Dollar	87.01
603	Fiji	Dollar	65.07
604	Papua New Guinea	Kina	36.33
605	Samoa	Tala	53.64
606	Palau	Dollar	149.66
607	North Mariana Island (U.S.)	Dollar	149.66
609	Solomon Islands	Dollar	17.97
610	New Caledonia	Franc CFP	1.41
612	Republic of Kiribati	Dollar	96.55
613	Tonga	pa'anga	62.10
699	Others		-
	Tuvalu		
	Nauru		
	Vanuatu		
	Federated States of Micronesia		

Code	Region/Country	Currency	Yen
AFRICA			
701	Egypt	Pound	3.04
702	Morocco	Dirham	16.01
704	Liberia	Dollar	0.76
705	Tanzania	Shilling	0.059
707	Nigeria	Naira	0.10
708	Republic of Cote d' Ivoire	CFAF	0.26
709	Madagascar	Ariary	0.033
710	Kenya	Shilling	1.16
711	Ethiopia	Birr	1.12
712	Zambia	Kwacha	5.96
713	Uganda	Shilling	0.042
714	Ghana	Cedi	11.92
717	Democratic Republic of the Congo	Franc	0.056
718	Mauritius	Rupee	3.25
725	Senegal	CFAF	0.26
726	Eswatini	Lilangeni	8.37
727	Libya	Dinar	28.45
729	Niger	CFAF	0.26
730	Tunisia	Dinar	49.56
731	South Africa	Rand	8.37
732	Algeria	Dinar	1.14
733	Angola	Kwanza	0.16
734	Mozambique	Metical	2.34
735	Republic of Botswana	Pula	11.09
736	Republic of Namibia	Dollar	8.37
737	Republic of Malawi	Kwacha	0.086
738	Burkina Faso	Franc CFA	0.26
799	Others		-
	Sao Tome and Principe	Togo	
	Djibouti	Benin	
	Seychelles	Mali	
	Somalia	South Sudan	
	Chad	Sierra Leone	
	Central African Republic	Gambia	
	Sudan	Mauritania	
	Republic of Congo	Guinea	
	Rwanda	Cameroon	
	Gabon	Zimbabwe	
	Canary Islands		

Table 2 States of United States of America

State	Code	State	Code	State	Code
Alabama	30	Louisiana	22	Ohio	31
Alaska	49	Maine	40	Oklahoma	16
Arizona	07	Maryland	48	Oregon	02
Arkansas	21	Massachusetts	43	Pennsylvania	36
California	04	Michigan	26	Rhode Island	44
Colorado	10	Minnesota	18	South Carolina	39
Connecticut	45	Mississippi	25	South Dakota	13
Delaware	47	Missouri	20	Tennessee	29
Florida	34	Montana	08	Texas	17
Georgia	33	Nebraska	14	Utah	06
Hawaii	50	Nevada	03	Vermont	42
Idaho	05	New Hampshire	41	Virginia	37
Illinois	24	New Jersey	46	Washington	01
Indiana	27	New Mexico	11	Washington,D.C.	51
Iowa	19	New York	35	West Virginia	32
Kansas	15	North Carolina	38	Wisconsin	23
Kentucky	28	North Dakota	12	Wyoming	09

Table 3 Provinces of People's Republic of China

Code	Province	Code	Province
01	Xinjiang Uygur	17	Jiangsu
02	Tibet	18	Shandong
03	Gansu	19	Henan
04	Qinghai	20	Shanxi
05	Sichuan	21	Manzhouli
06	Yunnan	22	Ningxia Hui
07	Guizhou	23	Shaanxi
08	Hunan	24	Heilongjiang
09	Guangxi	25	Jilin
10	Hubei	26	Liaoning
11	Guangzhou	27	Tianjing
12	Hainan	28	Beijing
13	Jiangxi	29	Shanghai
14	Zhejiang	30	Hebei
15	Anhui	31	Chongquin
16	Fujian		

Table 4 Industrial Classification Code Table

Code	Type of Industry	Description
0101	Agriculture, forestry, and fisheries Agriculture	Crop farming, Livestock farming, Agricultural and gardening services, etc.
0102	Forestry	Timber tracts, Logging, Cutting of fuelwood and charcoal -making, Forestry services, etc.
0103	Fisheries and Aquaculture	Marine fisheries, Inland water fisheries, Marine aquaculture, Inland water aquaculture, etc.
0201	Mining and quarrying of stone and gravel Mining and quarrying of stone and gravel	Metal mining (gold, silver, lead, zinc iron, tungsten, etc.), Coal and lignite mining(coal mine, etc.), Crude petroleum and natural gas production, Stone quarrying, sand and gravel, pits, etc.
0301	Construction Construction	Construction work (General civil engineering work and building work, Paving work, wooden building work, etc) construction work by specialist contractor(Paintings work, Flooring and interior finish work, etc), Equipment installation work(Electric work, Telecommunication work and signal system work, etc.)
0401	Manufacture of food and beverages, tobacco, and feed Manufacture of food	Livestock products, Seafood products, Flour and grain mill products, Seasonings, etc.
0402	Manufacture of beverages	Soft drinks and carbonated water, Alcoholic beverages, etc.
0403	Tobacco manufacture	Cigarettes, cigars and pipe tobacco, etc.
0404	Prepared animal foods and organic fertilizers	Balanced compound feeds, Organic fertilizers, etc.
0501	Manufacture of textile mill products Silk reeling plants, spinning mills, chemical fiber and twisting and bulky yarns	Silk reeling, Chemical fibers, Carbon fiber, Cotton spinning, Wool spinning, Twisting yarns, etc.
0502	Woven fabric mills and knit fabric mills	Woven cotton, spun rayon, silk and wool, Knit fabrics mills, etc.
0503	Dyed and finished textiles and rope and netting	Dyed and finished fabrics, Twisted yarn, Netting and cordage, Lacework and miscellaneous crude textile goods, etc.
0504	Apparel and miscellaneous fabricated textile products	Textile outer garment, Knitted outer garment, Underwear, Kimono goods, Bedding, Carpets, etc.
0601	Manufacture of lumber and wood products and of pulp, paper and paper products Manufacture of lumber and wood products	General sawing, Veneer wood, Plywood, Particleboard, etc.
0602	Manufacture of pulp and paper	Pulp, paper, Paper board, Japanese style paper, etc.
0603	Manufacture of paper products	Corrugated board, Wall paper, Office paper and school-use paper, Paper containers, etc.

Code	Type of Industry	Description
	Manufacture of chemical and allied products	
0701	Chemical fertilizers	Nitrogen and phosphoric fertilizers, Compound and mixed fertilizers
0702	Industrial inorganic chemicals	Soda, Inorganic pigments, Compressed and liquefied gases, Phosphoric acid, Sodium chloride etc.
0703	Industrial organic chemicals	Petrochemical basic products including ethylene, Aliphatic intermediary, Plastics including phenol resin, Synthetic rubber, etc.
0704	Oil and fat products, soaps, synthetic detergents, surface-active agents and paints	Fatty acids, Glycerin, Soaps, Synthetic detergents, Surface-active agents, Coating materials, Paints, Printing ink, Candles etc.
0705	Drugs and medicines	Drugs and medicines, Biological preparations, Natural drugs and Chinese medicines style medicines, etc.
0706	Cosmetics, toothpaste and toilet preparations	Cosmetics, Hair care products, Toothpaste, Toilet preparations etc.
0707	Miscellaneous chemical and allied products	Explosives, Agricultural chemicals, Gelatin and adhesives, Photosensitive materials, etc.
	Manufacture of petroleum and coal products	
0801	Petroleum refining	Gasoline, Naphtha, Kerosene, Diesel oil, Fuel oil, etc.
0802	Miscellaneous petroleum and coal products	Lubrication oil, Grease, Coke, Artificial coal, Briquette, Paving, etc.
	Manufacture of ceramic, stone and clay products	
0901	Glass and its products	Glass sheet, Glassware, Scientific and medical glass instruments, etc.
0902	Cement and its products	Cement, Freshly mixed concrete, Concrete products, etc.
0903	Miscellaneous ceramic, stone and clay products	Ceramics and allied products, Clayware for construction use, Fire-resisting articles, Carbon and graphite products, Abrasives, etc.
	Manufacture of iron and steel iron industries	
1001	Pig iron, basic steel, and steel materials	Pig iron, Basic steel, Steel materials, Steel pipes, etc.
1002	Castings and forgings, and other iron and steel products manufacturing	Pig iron casting, Iron formed-and-fabricated materials including cast steel, Iron and steel shearing and slitting, etc.
	Manufacture of non-ferrous metals and products	
1101	Smelting and refining of non-ferrous metals	Copper, Lead, Zinc, Precious metals, Nickel, Aluminum, etc.
1102	Miscellaneous non-ferrous metal products manufacturing	Non-ferrous metals including rolled copper and their alloyed sheet products, Electric wire and cables, Non-ferrous metal casting, Non-ferrous metal castings and forgings, etc.
	Manufacture of fabricated metal products	
1201	Fabricated constructional and architectural metal products	Metal manufacture for construction including steel towers and bridges, Metal sashes and doors, Architectural metal products etc.
1202	Miscellaneous fabricated metal products	Tin can, Coated boards, Western style tableware, Cutting tools, Ironware, Heating apparatus, Metal formed-and-fabricated materials, Metal-wire articles, Bolts, Screw nuts, Rivets, etc.

Code	Type of Industry	Description
	Manufacture of general-purpose machinery	
1301	General industry machinery and equipment	Elevators and escalators, Logistics and conveying equipments, Industrial furnaces and ovens, Refrigerating machines and air conditioning, etc.
1302	Miscellaneous general-purpose machinery and machine parts	Boilers, Engines, Turbines, Pumps, Compressors, Boll and roller bearings, fire extinguishing equipment, etc.
	Manufacture of production machinery	
1401	Agricultural machinery and equipment Machinery and equipment for construction and minig, Textile machinery	Agricultural machinery and equipment, Machinery and equipment for construction and minig, Machinery for man-made fiber and spinning machinery, Weaving and knitting machinery, Dying and finishing machinery, Sewing machinery and equipment, etc.
1402	Daily lives industry machinery, Basic material industry machinery	Food processing machinery, Woodworking machinery, Pulp and paper industry machinery, Printing, bookbinding and paper converting machinery, Packing machines, Foundry equipment, Chemical machinery, Machinery for fabrication of plastic, etc.
1403	Metalworking machinery and its Equipments	Lathes, Metal cutting machine tools including drill presses, Rolling mills, Metal working machinery including vending machines, etc.
1404	Semiconductor and flat-panel display manufacturing equipment	Semiconductor manufacturing equipment, Flat-panel display manufacturing equipment etc.
1405	Miscellaneous production machinery and machine parts	Molds and dies, Vacuum equipment, Industrial robots etc.
	Manufacture of business oriented machinery	
1501	Office machines, service industry and amusement machines	Copying machines, Vending machines, Laundry machines for business use, Amusement machines etc.
1502	Optical instruments and lenses	Cameras, Microscopes, Telescopes, Motion picture equipments, Optical lenses and prisms, etc.
1503	Miscellaneous business oriented Machinery	Measuring instruments, Analytical instruments, Testing machines, surveying instruments and physical and chemical instruments, Ordnance and accessories, etc.
	Manufacture of electrical machinery, equipment and supplies	
1601	Industrial electrical apparatus	Power generators, Electric motors and other rotating electrical machinery, Power and distribution transformers, Switchboards, electrical control equipments, Electric welding equipments, etc.
1602	Household electric appliances	Microwave ovens, Refrigerators, Electric rice cookers, Electric fans, Water heaters, Air conditioners, Washing machines, Vacuum cleaners, Irons, Electric heaters, etc.
1603	Electronic equipment	X-ray apparatus, Medical instruments electronic equipments, Electronic microscopes and other electronic applied devices, etc.
1604	Miscellaneous electrical machinery equipment and supplies	Electric bulbs, Electric lighting fixtures, storage batteries, Primary batteries, Electric measuring instruments, Industrial process controlling instruments, Permanent magnets, etc.

Code	Type of Industry	Description
1701	Manufacture of information and communication electronics equipment and of electronic parts and devices Communication equipment and related products, Image and audio equipment	Wired communication equipment including telephone sets and facsimile machines, Radios and television Broadcasting, wireless communication equipment including Cellular phones, Radios and television set receivers, Video equipments, Digital camera, Electro-acoustic devices including Karaoke sets, etc.
1702	Electronic data processing machines, digital and analog computer, equipment	Electric calculators, PCs, External storages, I/O equipment, Optical discs and magnetic discs etc.
1703	Electronic parts, devices and electronic circuits	Electronic tubes including cathode-ray tubes, Diodes, Semiconductor elements including Transistors, Integrated circuits, Resistors, Capacitors, Transformers, Magnetic heads, Electronic circuit board, Unit parts, etc.
1801	Manufacture of transportation equipment Motor vehicles, motor vehicle bodies and trailers	Passenger cars, Buses, Trucks, Motorcycles
1802	Motor vehicle parts and accessories	Motor vehicle engines, Brakes, Clutch axles, Radiators, Deferential gears, etc.
1803	Miscellaneous transportation equipment	Railroad equipment and parts, Vessels, Machines for ships, Aircraft and accessories, Industrial vehicles and their parts accessories, Bicycles and their parts, etc.
1901	Miscellaneous manufacturing industries Manufacture of furniture and fixtures	Furniture, Religious utensils, fittings, etc.
1902	Printing and allied industries	Printing businesses, Photoengraving businesses, Bookbinding, Printing finishing, Printing-related services
1903	Manufacture of plastic products	Plastic boards, rods, pipe work, couplings, deformed extrusion products, films, sheets, floor materials and synthetic leather, Industrial plastic products, Foamed and reinforced plastic products, Plastic molding materials, etc.
1904	Manufacture of rubber products	Tires and tubes for automobiles, rubber and plastic footwear, rubber belts, rubber hose, Industrial rubber products, etc.
1905	Manufacture of leather tanning, leather products and fur skins	Leather tanning and finishing, Leather footwear, Leather gloves, Baggage, Handbags and small leather cases, Fur skins, etc.
1906	Miscellaneous manufacturing industries, etc.	Precious metals and jewel products, Musical instruments, Toys, Sporting goods, Stationery including Pens and Pencils, Costume accessories, Ornamental articles and buttons, Lacquer ware, Sundry goods of Tatami mats, Umbrellas, Ophthalmic goods including frames, etc.
2001	Electricity, gas, heat supply and water Electricity, gas, heat supply and water	Power stations, Substations, Gasworks, Gas distribution, Heat supply, Water supply, Industrial water supply, Sewerage works

Code	Type of Industry	Description
	Information and communications	
2101	Communications	Fixed telecommunications, Mobile telecommunications, etc.
2102	Broadcasting	Public broadcasting, Private-sector broadcasting, Cablecasting
2103	Information services	Computer programming and other software services, Data processing and information services, etc.
2104	Internet based services	Web portal providers, Application services providers, Digital certificate services, Internet support services, etc.
2105	Video picture, sound information, character information production and distribution	Image information production and distribution, Sound information production, Newspaper publishers, Publishers, Commercial art and graphic design, etc.
	Transport	
2201	Railway transport, road passenger transport, road freight transport, water transport, and air transport	Railway services, Road passenger transport, Road freight transport, Water transport, Air transport
2202	Warehousing and services incidental to transport	Warehousing, Harbor transport businesses, Cargo forwarding agents, Forwarding agents, Transport agents, Packaging and crating, Transport facilities services, etc.
	Wholesale and retail trade	
2301	Wholesale trade	General merchandise wholesale trade, Machinery and equipment wholesale trade, etc.
2302	Retail trade	General merchandise retail trade, Machinery retail trade, Food and beverages retail trade, etc.
	Finance and insurance	
2401	Finance and insurance	Banking, Financial institutions for cooperative organization, Money lending business, credit card and installment finance business, financial products transaction dealers and futures commodity transaction dealers, Insurance institutions, etc.
	Real estate	
2501	Real estate	Real estate agencies, Real estate lessors and managers
	Goods rental and leasing	
2601	Goods rental and leasing	General goods rental and leasing, Industrial machinery and equipment rental and leasing, Automobile rental, etc.
	Accommodations, Eating and drinking places,	
2701	Accommodations	Japanese-style hotels, Hotels, etc.
2702	Eating and drinking places	General eating and drinking places (Restaurants, etc.), Pubs, Beer halls, coffee shops, etc.
2703	Food take out and food delivery services	Food take out services, Food delivery services

Code	Type of Industry	Description
	Education and learning support, Medical, health care and welfare, Compound services	
2801	Education, learning support	Kindergartens, Schools, Private schools, Instruction services for arts culture and technicals, etc.
2802	Medical, health care, and welfare	Hospitals, Health care centers, Child-care centers, etc.
2803	Compound services	Postal services, Cooperative associations, n.e.c., etc.
	Services, etc.	
2901	Business consultants and pure holding companies	Business consultants, Pure holding companies
2902	Advertising	Advertising
2903	Scientific research, professional and technical services	Scientific and development research institutes, Lawyers and patent attorneys offices, Certified public accountants and auditors offices, Design services, Authors and artists, Detective agencies and credit bureaus, Translation, Veterinary services, Architectural design services, Mechanical design services, Photographic studios, etc.
2904	Living related and personal services and amusement services	Laundries, Barbershops, Hair-dressing and beauty salon, Pubic bathhouses, Travel agency, Checkrooms, safety deposit services, Ceremonial occasions, Cinemas, Legitimate theatres, Sports facilities, Public gardens and amusement parks, Amusement and recreation facilities, etc.
2905	Services, n.e.c.	Industrial waste disposal business, Automobile maintenance services, Machine, etc. repair services, Employment and worker dispatching services, Stenographic, entrée document and copy services, Guard services, Political business and cultural organizations, religion, etc.

Note: For a pure holding company, please enter "2901 Business consultants and pure holding companies".
For a research institute, please enter the same industry classification as that of the parent company.