

General Situation

I. Survey Tables on Enterprises

The survey tables on enterprises the activities of manufacturing establishments with 4 or more employees by reassessing each establishment as an enterprise to which the establishment belongs.

1. Enterprises with establishments of 4 or more employees

The number of manufacturing establishments (hereinafter referred as the “number of establishments “) with 4 or more employees totaled 341,421 (down 1.2% compared to the previous year). By reassessing establishments as enterprises, the number of enterprises totaled 312,341 (down 1.0 % id.) (Tables 1 and 2).

(1) Number of enterprises

- (i) Observing the number of enterprises (312,341) by legal status, the number of corporations was 248,603 (down 1.4% compared to the previous year), accounting for 79.6% of the total number of enterprises. The number of associations and others was 2,568 (down 1.5% id.), accounting for 0.8% of the total, and that of individual enterprises was 61,170 (up 0.4% id.), accounting for 19.6% of the total. (Tables 1 and 2).

Table 1: Transition in the number of enterprises

<<Number of enterprises>>

	1997	1998	1999	2000
Total	328,144	343,018	315,614	312,341
Corporations	257,130	268,182	252,108	248,603
Associations/others	2,639	2,790	2,606	2,568
Individual enterprises	69,375	72,046	60,900	61,170

<<Year-on-year comparison, %>>

	1997	1998	1999	2000
Total	...	- 1.9	- 8.0	- 1.0
Corporations	...	- 1.7	- 6.0	- 1.4
Associations/others	...	- 3.2	- 6.6	- 1.5
Individual enterprises	...	- 2.3	- 15.5	0.4

<<Distribution ratio, %>>

Number of enterprises	1997	1998	1999	2000
Total	100.0	100.0	100.0	100.0
Corporations	78.4	78.2	79.9	79.6
Associations/others	0.8	0.8	0.8	0.8
Individual enterprises	20.8	21.0	19.3	19.6

Note 1: Note 1: Since the number of enterprises with more than 4 employees was rearranged in 1997, the year-by-year comparison in 1997 is unidentified.

Note 2: Establishments were adjusted in the 1998 survey, therefore year-by-year comparison is based on a time series.

In addition, of all enterprises (312,341), enterprises with 1 establishment numbered 293,325 (down 1.0% id.), accounting for the majority of corporations at 93.9%, enterprises with 2 establishment numbers 14,348 (down 1.4% id.), accounting for 4.6% of the total, enterprises with 3 to 5 establishments numbered 4,079 (down 4.2% id.), accounting for 1.3% of the to the total, and enterprises with 6 or more establishments numbered 589 (down 2.3% id.), accounting for 0.2% of the total (Table 2).

Table 2: Number of establishments and enterprises by legal status and size of capital

By legal status and size of capital	Number of establishments			Total number of enterprises		
		Y/Y (%)	Composition ratio by organization (%)		Y/Y (%)	Composition ratio by organization (%)
Total	341,421	- 1.2	100.0	312,341	- 1.0	100.0
Total corporations	276,882	- 1.5	81.1	248,603	- 1.4	79.6
capital less than 10 million yen	94,568	- 0.1	27.7	92,847	- 0.1	29.7
capital more than 10 to less than 30 million yen	130,198	- 2.7	38.1	120,783	- 2.7	38.7
capital more than 30 to less than 50 million yen	19,222	- 2.1	5.6	15,616	- 1.4	5.0
capital more than 50 to less than 100 million yen	14,012	- 0.4	4.1	10,167	- 0.1	3.3
capital more than 100 to less than 300 million yen	6,304	- 3.0	1.8	4,077	- 1.6	1.3
capital more than 300 million to less than 1 billion yen	4,794	5.6	1.4	2,664	4.3	0.9
capital more than 1 to less than 10 billion yen	4,637	- 0.7	1.4	1,897	1.1	0.6
capital more than 10 billion yen	3,147	- 1.2	0.9	552	2.2	0.2
Associations and others	3,120	- 1.9	0.9	2,568	- 1.5	0.8
Individual enterprises	61,419	0.4	18.0	61,170	0.4	19.6

By legal status and size of capital	Enterprises with 1 establishment				Enterprises with 2 establishments			
		Y/Y (%)	Composition ratio by organization (%)	Composition ratio by number of establishments (%)		Y/Y (%)	Composition ratio by organization (%)	Composition ratio by number of establishments (%)
Total	293,325	- 1.0	100.0	93.9	14,348	- 1.4	100.0	4.6
Total corporations	230,045	- 1.3	78.4	92.5	13,970	- 1.4	97.4	5.6
capital less than 10 million yen	91,278	0.0	31.1	98.3	1,454	- 3.8	10.1	1.6
capital more than 10 to less than 30 million yen	112,877	- 2.7	38.5	93.5	6,767	- 2.2	47.2	5.6
capital more than 30 to less than 50 million yen	12,921	- 0.9	4.4	82.7	2,079	- 2.2	14.5	13.3
capital more than 50 to less than 100 million yen	7,608	- 0.2	2.6	74.8	1,805	2.1	12.6	17.8
capital more than 100 to less than 300 million yen	2,791	- 0.9	1.0	68.5	806	- 0.5	5.6	19.8
capital more than 300 million to less than 1 billion yen	1,654	3.9	0.6	62.1	517	2.2	3.6	19.4
capital more than 1 to less than 10 billion yen	809	3.3	0.3	42.6	476	4.2	3.3	25.1
capital more than 10 billion yen	107	10.3	0.0	19.4	66	1.5	0.5	12.0
Associations and others	2,346	- 1.3	0.8	91.4	150	- 3.8	1.0	5.8
Individual enterprises	60,934	0.4	20.8	99.6	228	0.0	1.6	0.4

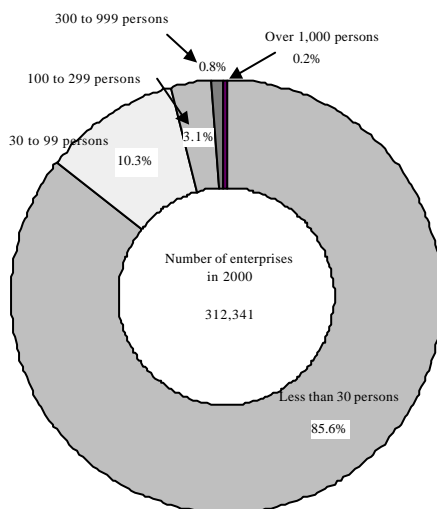
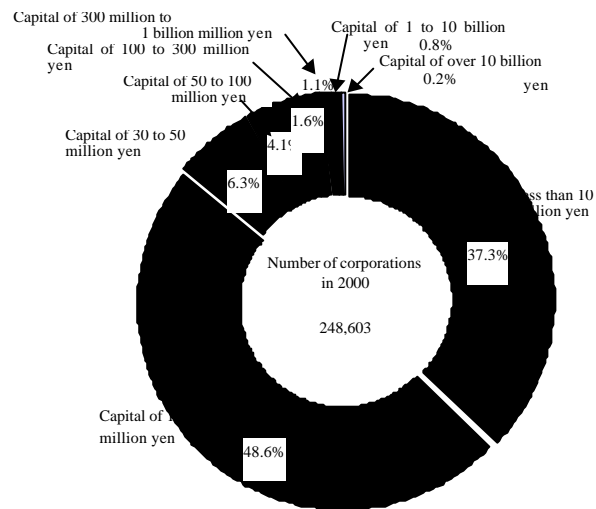
By legal status and size of capital	Enterprises with 3 to 5 establishments				Enterprises with 6 or more establishments			
		Y/Y	Composition ratio by organization	Composition ratio by number of establishments		Y/Y	Composition ratio by organization	Composition ratio by number of establishments
		(%)	(%)	(%)		(%)	(%)	(%)
Total	4,079	- 4.2	100.0	1.3	589	- 2.3	100.0	0.2
Total corporations	4,021	- 4.1	98.6	1.6	567	- 2.6	96.3	0.2
capital less than 10 million yen	113	- 8.9	2.8	0.1	2	- 33.3	0.3	0.0
capital more than 10 to less than 30 million yen	1,112	- 5.4	27.3	0.9	27	- 3.6	4.6	0.0
capital more than 30 to less than 50 million yen	590	- 7.7	14.5	3.8	26	- 23.5	4.4	0.2
capital more than 50 to less than 100 million yen	700	- 3.7	17.2	6.9	54	- 6.9	9.2	0.5
capital more than 100 to less than 300 million yen	423	- 7.0	10.4	10.4	57	- 10.9	9.7	1.4
capital more than 300 million to less than 1 billion yen	415	7.5	10.2	15.6	78	13.0	13.2	2.9
capital more than 1 to less than 10 billion yen	479	- 4.8	11.7	25.3	133	0.0	22.6	7.0
capital more than 10 billion yen	189	2.2	4.6	34.2	190	- 1.6	32.3	34.4
Associations and others	51	- 3.8	1.3	2.0	21	5.0	3.6	0.8
Individual enterprises	7	- 12.5	0.2	0.0	1	0.0	0.2	0.0

(Note) Composition ratio by organization refers to the composition ratio of enterprises by legal status and size to total capital.
Composition ratio by number of establishments refers to the composition ratio of enterprises with 1 establishment or several establishments to total number of enterprises.

(ii) Looking at the number of corporations (248,603) by the size of capital or investment (hereinafter referred to as capital) (Figure 1), corporations that capitalized between 10 million yen and 30 million yen numbered 12,783, accounting for nearly 50% (48.6% of the total number of corporations), followed by those with a capital of less than 10 million yen numbered 92,847 (37.3% id.), those of 30 to 50 million yen numbered 15,616 (6.3% id.), those of 50 to 100 million yen numbered 10,167 (4.1% id.), those of 100 to 300 million yen numbered 4,077 (1.6% id.), those of 300 million to 1 billion yen numbered 2,664 (1.1% id.), those of 1 to 10 billion yen numbered 1,897 (0.8% id.) and those of over 10 billion yen numbered 552 (0.2% id.).

As for a year-by-year comparison of the number of enterprises by size of capital, it decreased for all size of capital groups except for the group over 30 billion yen, which actually increased.

Figure 1: Composition ratio of the number of corporations by capital size



level (increase of 1 enterprise).

(iii) Figure 2: Composition ratio of the number of enterprises by size of employees

Looking at the number of enterprises (312,341) by size of employees (Figure 2), enterprises with less than 30 employees totaled 267,315, accounting for 85.6% of the total, followed by enterprises with 30 to 99 employees at 32,238 (10.3% of the total number of enterprises), those with 100 to 299 employees at 9,634 (3.1% id.), those with 300 to 999 employees at 2,516 (0.8% id.) and those with over 1,000 employees at 638 (0.2% id.).

On a year-by-year comparison of the number of enterprises by size of employees, it showed a decreased in all classes including enterprises with less than 30 employees except for those with 300 to 999 employees, which showed the same

(2) Number of employees.

(i) The number of employees was 9,183,833 (down 2.1% compared to the previous year). When viewing this by legal status, the number of employees of corporations was 8,731,498 (down 2.1% id.), accounting for 95.1% of the total, that of associations and others was 73,530 (down 0.8% id.), accounting for 0.8% of the total, and that of individual enterprises was 378,805 (down 1.9% id.), accounting for 4.1% of the total (Table 3).

Table 3: Number of employees by legal status and size of capital

(Unit: person)

By legal status and size of capital							
	Total enterprises			Enterprise with 1 establishment			
		Y/Y (%)	Composition ratio by organization (%)		Y/Y (%)	Composition ratio by organization (%)	Composition ratio by number of enterprises (%)
Total	9,183,833	- 2.1	100.0	5,151,298	- 1.3	100.0	56.1
Total corporations	8,731,498	- 2.1	95.1	4,728,649	- 1.3	91.8	54.2
capital less than 10 million yen	870,772	- 1.5	9.5	822,119	- 1.3	16.0	94.4
capital more than 10 to less than 30 million yen	2,471,394	- 3.1	26.9	2,022,078	- 3.0	39.3	81.8
capital more than 30 to less than 50 million yen	798,974	- 1.8	8.7	531,694	- 0.2	10.3	66.5
capital more than 50 to less than 100 million yen	889,117	0.2	9.7	502,209	- 0.1	9.7	56.5
capital more than 100 to less than 300 million yen	584,807	- 4.7	6.4	285,385	- 3.2	5.5	48.8
capital more than 300 million to less than 1 billion yen	641,576	3.9	7.0	288,964	3.2	5.6	45.0
capital more than 1 to less than 10 billion yen	889,541	- 1.7	9.7	212,498	1.3	4.1	23.9
capital more than 10 billion yen	1,585,317	- 3.6	17.3	63,702	17.7	1.2	4.0
Associations and others	73,530	- 0.8	0.8	48,705	0.4	0.9	66.2
Individual enterprises	378,805	- 1.9	4.1	373,944	- 1.9	7.3	98.7

By legal status and size of capital								
	Enterprise with 2 establishments				Enterprise with 3 to 5 establishments			
		Y/Y	Composition ratio by organization	Composition ratio by number of enterprises		Y/Y	Composition ratio by organization	Composition ratio by number of enterprises
		(%)	(%)	(%)		(%)	(%)	(%)
Total	1,335,100	- 0.7	100.0	14.5	1,342,138	- 2.6	100.0	14.6
Total corporations	1,322,487	- 0.6	99.1	15.1	1,336,334	- 2.6	99.6	15.3
capital less than 10 million yen	41,459	- 4.7	3.1	4.8	x	x	x	x
capital more than 10 to less than 30 million yen	331,506	- 3.1	24.8	13.4	110,975	- 4.2	8.3	4.5
capital more than 30 to less than 50 million yen	176,467	- 2.2	13.2	22.1	x	x	x	x
capital more than 50 to less than 100 million yen	218,897	3.9	16.4	24.6	140,512	- 2.2	10.5	15.8
capital more than 100 to less than 300 million yen	143,745	- 3.3	10.8	24.6	118,494	- 7.0	8.8	20.3
capital more than 300 million to less than 1 billion yen	137,729	0.3	10.3	21.5	158,340	8.3	11.8	24.7
capital more than 1 to less than 10 billion yen	212,562	3.3	15.9	23.9	326,679	- 5.4	24.3	36.7
capital more than 10 billion yen	60,122	- 3.5	4.5	3.8	390,343	- 1.8	29.1	24.6
Associations and others	8,382	- 5.8	0.6	11.4	x	x	x	x
Individual enterprises	4,231	- 10.7	0.3	1.1	x	x	x	x

By legal status and size of capital	Enterprise with 6 or more establishments			
		Y/Y (%)	Composition ratio by organization (%)	Composition ratio by number of enterprises (%)
		(%)	(%)	(%)
Total	1,355,297	- 5.6	100.0	14.8
Total corporations	1,344,028	- 5.6	99.2	15.4
capital less than 10 million yen	x	x	x	x
capital more than 10 to less than 30 million yen	6,835	- 15.9	0.5	0.3
capital more than 30 to less than 50 million yen	x	x	x	x
capital more than 50 to less than 100 million yen	27,499	- 9.5	2.0	3.1
capital more than 100 to less than 300 million yen	37,183	- 14.0	2.7	6.4
capital more than 300 million to less than 1 billion yen	56,543	4.2	4.2	8.8
capital more than 1 to less than 10 billion yen	137,802	- 4.6	10.2	15.5
capital more than 10 billion yen	1,071,150	- 5.3	79.0	67.6
Associations and others	x	x	x	x
Individual enterprises	x	x	x	x

(Note) Composition ratio by organization refers to the composition ratio of enterprises by legal status and size to total capital.
Composition ratio by number of establishments refers to the composition ratio of enterprises with 1 establishment or several establishments to total number of enterprises.

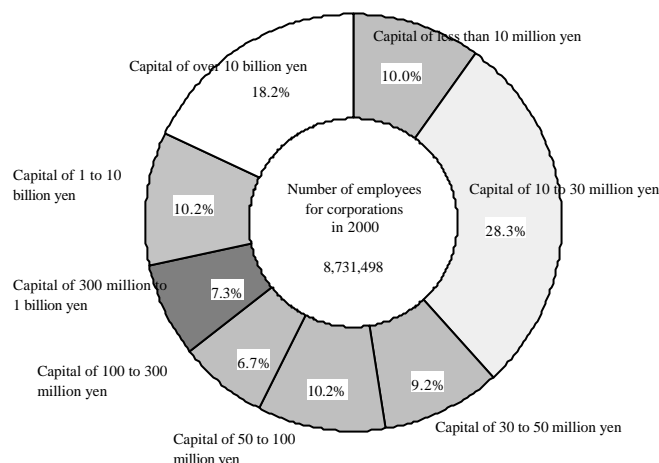
In addition, the number of employees of enterprises decreased in all categories: enterprises with 1 establishment decreased by 1.3% compared to the previous year to 5,151,298 (56.1% of enterprises in total), enterprises with 2 establishments decreased by 0.7% to 1,335,100 (14.5% id.), enterprises with 3 to 5 establishments decreased by 2.6% to 1,342,138 (14.6% id.), and enterprises with 6 or more

establishments decreased by 5.6% to 1,355,297 (14.8% id.). By composition ratio, however, most corporations that capitalized at 10 million yen or less own 1 establishment (94.4% of the corporations capitalized at 10 million yen or less in total), and a very high proportion of corporations (67.6%) that capitalized at 10 billion yen or more own 6 establishments or more.

(ii) When observing the number of employees of enterprises by size of capital (Figure 3), those with a capital of 10 to 30 million yen accounted for 28.3%, those with 10 billion yen or more accounted for 18.2%, those with 1 to 10 billion yen accounted for 10.2%, those with 50 yen to 100 million yen accounted for 10.2%, those with less than 10 million yen accounted for 10.0%, those with 30 to 50 million yen accounted for 9.2%, those with 30 to 50 million yen accounted for 7.3%, and those with 100 and 300 million yen accounted for 6.7%.

On a year-by-year comparison, the number of employees of enterprises by size of capital decreased in all size of capital groups except for those with 30 to 100 million and those with 50 to 100 million yen, which showed an increase of 3.9% and 0.2% respectively.

Figure 3: Composition ratio of the number of employees of corporations by capital size



(3) Value of shipment.

(i) Value of manufactured goods shipments (hereinafter referred to as “value of shipment”) totaled 300.4776 trillion yen (up 3.1% compared to the previous year). By legal status, the value of shipment of corporations amounted to 296.6654 trillion yen (up 3.2% id.), accounting for 98.7% of the total, that of associations and others amounted to 1.6419 trillion yen (down 6.5% id.), accounting for 0.5% of the total, that of the individual enterprises amounted to 2.1704 trillion yen (down 3.1% id.), accounting for 0.7% of the total (Table 4).

Table 4: Value of shipment by legal status and size of capital

(Unit: million yen)

By legal status and size of capital	Total enterprises						
		Enterprise with 1 establishment					
		Y/Y	Composition ratio by organization		Y/Y	Composition ratio by organization	Composition ratio by number of enterprises
		(%)	(%)		(%)	(%)	(%)
Total	300,477,604	3.1	100.0	107,141,830	4.1	100.0	35.7
Total corporations	296,665,371	3.2	98.7	104,072,031	4.3	97.1	35.1
capital less than 10 million yen	8,043,705	- 0.5	2.7	7,619,882	- 0.3	7.1	94.7
capital more than 10 to less than 30 million yen	39,775,148	- 1.3	13.2	32,045,861	- 1.5	29.9	80.6
capital more than 30 to less than 50 million yen	17,087,754	0.3	5.7	11,117,839	1.6	10.4	65.1
capital more than 50 to less than 100 million yen	22,392,755	2.5	7.5	12,835,188	2.9	12.0	57.3
capital more than 100 to less than 300 million yen	18,477,603	- 2.8	6.1	9,601,837	- 0.3	9.0	52.0
capital more than 300 million yen to less than 1 billion yen	25,947,928	11.6	8.6	12,651,417	14.0	11.8	48.8
capital more than 1 to less than 10 billion yen	43,181,691	1.3	14.4	12,892,525	8.5	12.0	29.9
capital more than 10 billion yen	121,758,787	5.6	40.5	5,307,484	49.5	5.0	4.4
Associations and others	1,641,850	- 6.5	0.5	935,316	- 2.9	0.9	57.0
Individual enterprises	2,170,383	- 3.1	0.7	2,134,483	- 3.1	2.0	98.3

By legal status and size of capital	Enterprise with 2 establishments				Enterprise with 3 to 5 establishments			
		Y/Y	Composition ratio by organization	Composition ratio by number of enterprises		Y/Y	Composition ratio by organization	Composition ratio by number of enterprises
		(%)	(%)	(%)		(%)	(%)	(%)
Total	41,957,094	3.1	100.0	14.0	60,074,455	2.8	100.0	20.0
Total corporations	41,693,722	3.3	99.4	14.1	59,895,251	2.9	99.7	20.2
capital less than 10 million yen	373,868	- 4.6	0.9	4.6	x	x	x	x
capital more than 10 to less than 30 million yen	5,785,451	- 0.2	13.8	14.5	1,861,327	- 1.2	3.1	4.7
capital more than 30 to less than 50 million yen	3,934,842	0.6	9.4	23.0	x	x	x	x
capital more than 50 to less than 100 million yen	5,385,656	3.7	12.8	24.1	3,552,596	0.1	5.9	15.9
capital more than 100 to less than 300 million yen	4,516,761	- 1.6	10.8	24.4	3,435,856	- 7.6	5.7	18.6
capital more than 300 million to less than 1 billion yen	5,235,691	5.6	12.5	20.2	5,905,296	19.4	9.8	22.8
capital more than 1 to less than 10 billion yen	10,592,929	8.3	25.2	24.5	14,034,564	- 7.7	23.4	32.5
capital more than 10 billion yen	5,868,525	2.0	14.0	4.8	29,174,153	8.4	48.6	24.0
Associations and others	233,302	-15.3	0.6	14.2	x	x	x	x

By legal status and size of capital	Enterprise with 6 or more establishments			
		Y/Y	Composition ratio by organization	Composition ratio by number of enterprises
		(%)	(%)	(%)
Total	91,304,224	2.1	100.0	30.4
Total corporations	91,004,367	2.1	99.7	30.7
capital less than 10 million yen	x	x	x	x
capital more than 10 to less than 30 million yen	82,509	- 0.9	0.1	0.2
capital more than 30 to less than 50 million yen	x	x	x	x
capital more than 50 to less than 100 million yen	619,315	- 2.8	0.7	2.8
capital more than 100 to less than 300 million yen	923,150	- 13.7	1.0	5.0
capital more than 300 million to less than 1 billion yen	2,155,525	- 3.8	2.4	8.3
capital more than 1 to less than 10 billion yen	5,661,672	- 1.6	6.2	13.1
capital more than 10 billion yen	81,408,625	2.9	89.2	66.9
Associations and others	x	x	x	x
Individual enterprises	x	x	x	x

(Note) Composition ratio by organization refers to the composition ratio of enterprises by legal status and size to total capital.
Composition ratio by number of establishments refers to the composition ratio of enterprises with 1 establishment or several establishments to total number of enterprises.

In addition, the value of shipment of enterprises with 1 establishment amounted to 107.1418 trillion yen (up 4.1% id.), accounting for 35.7% of the enterprises total, that of enterprises with 2 establishments was 41.9571 trillion yen (up 3.1% id.), accounting for 14.6% of the total, that of enterprises with 3 to 5 establishments was 60.745 trillion yen (up 2.8% id.), accounting for 20.0% of

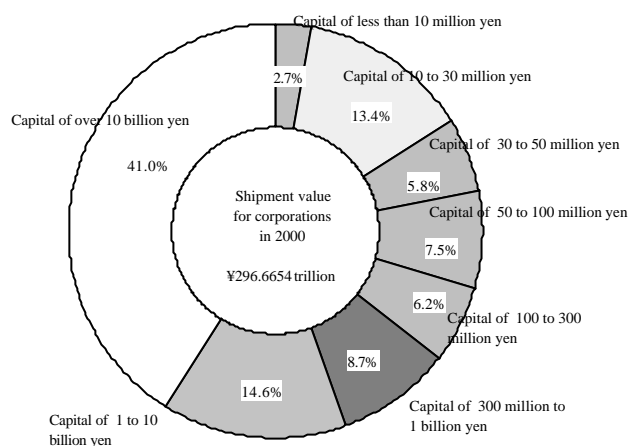
the total, and that of enterprises with 6 or more establishments was 91.3042 trillion (up 2.1% id.), accounting for 30.5% of the total.

Regarding the composition ratio of enterprises with 1 establishment, the number of enterprises reached almost 93.9% and the number of employees was slightly more than half at 56.1%, while the value of shipment totaled 35.7%.

(ii) As for the value of shipment of the corporations by size of capital (Table 4, Figure 4), that of corporations capitalized at 10 or more billion yen was 121.7588 trillion yen, accounting for 41.0% of the total corporations and enterprises capitalized at 1 to 10 billion yen was 43.1817 trillion yen (14.6% of the total corporations). It was followed by enterprises with a capital of 10 to 30 million yen at 39.7751 trillion (13.4% id.), those of 300 million yen to 1 billion yen at 25.9479 trillion (8.7% id.), those of 50 to 100 million yen at 22.3928 trillion (7.5% id.), those of 100 to 300 million yen at 18.4776 trillion (6.2% id.), those of 30 to 50 million yen at 17.878 trillion (5.8% id.), and those of less than 10 million yen at 8.437 trillion (2.7% id.).

Moreover, when observing the year-by-year comparison of the value of shipment of corporations, it increased in all size of capital groups except for enterprises of a capital of 100 to 300 million yen and those of less than 30 million yen decreased.

Figure 4: Composition ratio of value of shipment of corporations by capital size



(4) Number of employees per enterprise

- (i) The number of employees per enterprise was 29 (down 1 person compared to the previous year). By legal status, the number of employees per corporation remained 35 (same level as the previous year) of which enterprises capitalized at 10 billion yen or more were significantly higher at 2,872 (down 174 persons id.). For per association or other was 29 (up 1 person compared to the previous year), and that per individual enterprise was 6 (same level as the previous year) (Table 5).

Table 5: Number of employees per enterprise by legal status and size of capital

(Unit: person)

By legal status	Total enterprises		Enterprises with 1 establishment		Enterprises with 2 establishments		Enterprise with 3 to 5 establishments		Enterprises with 6 or more establishments	
		Y/Y		Y/Y		Y/Y		Y/Y		Y/Y
Total	29	- 1	18	0	93	1	329	5	2,301	- 79
Total corporations	35	0	21	0	95	1	332	5	2,370	- 77
capital less than 10 million yen	9	- 1	9	0	29	0	x	x	x	x
capital more than 10 to less than 30 million yen	20	- 1	18	0	49	0	100	1	253	- 37
capital more than 30 to less than 50 million yen	51	0	41	0	85	0	x	x	x	x
capital more than 50 to less than 100 million yen	87	0	66	0	121	2	201	3	509	- 15
capital more than 100 to less than 300 million yen	143	- 5	102	- 3	178	- 5	280	0	652	- 23
capital more than 300 million to less than 1 billion yen	241	- 1	175	- 1	266	- 5	382	3	725	- 61
capital more than 1 to less than 10 billion yen	469	- 14	263	- 5	447	- 3	682	- 4	1,036	- 50
capital more than 10 billion yen	2,872	- 174	595	37	911	- 47	2,065	- 83	5,638	- 222
Associations and others	29	1	21	1	56	- 1	x	x	x	x
Individual enterprises	6	0	6	0	19	- 2	x	x	x	x

- (ii) The number of employees per enterprise with 1 establishment was 18, which was the same level of the previous year. By legal status, the number of employees per corporation was 21 (same as the previous year), of which per corporation capitalized at 10 or more billion yen only increased (595 persons, up 37 persons compared to the previous year), per association or other was 21 (up 1 person id.) and per individual enterprise was 6 (same as the previous year).

The number of employees per enterprise with 2 establishments was 93 (up 1 person compared to the previous year). By legal status, the number of employees per corporation was 95 (up 1 person id.) and decreased in almost all size of capital groups. The number of employees per association or other was 56 (down 1 person id.) and per individual enterprise was 19 (down 2 persons id.).

The number of employees per enterprise with 3 to 5 establishments was 329 (up 5 persons id.). By legal status, the number of employees per corporation was 332 (up 5 persons id.), of which enterprises with 1 establishment, per corporation that capitalized at 10 billion yen or more decreased (2,065 persons, down 83 persons id.), and that capitalized at 1 to 10 billion yen decreased to 682 persons (down 4 persons id.).

The number of employees per enterprise with 6 or more establishments stood at 2,301 (down 79 persons id.). By legal status, the number of employees per corporation was 2,370 (down 77 persons id.), of which the number of corporations that capitalized at 10 billion yen or more was 5,638 (down 222 persons id.), which was the largest. However, it decreased in almost all size of capital groups in enterprises with 6 or more establishments.

(5) Value of shipment per enterprise

- (i) The value of shipment per enterprise was 962.02 million yen (up 4.2% compared to the previous year). By legal status, the value of shipment per corporation was 1.19333 billion yen, of which value of shipment per corporation that capitalized at 10 billion yen was notably higher at 22.057751 billion yen, followed by value of shipment per corporation that capitalized at 1 to 10 billion yen at 22.7315 billion yen, and value of shipment per corporation that capitalized at 300 million yen to 1 billion yen at 9.74021 billion yen. In addition, value of shipment per association or other was 63.935 million yen, and that per individual enterprise was 35.48 million yen. (Table 6)

Table 6: Value of shipment per enterprise by legal status and size of capital

(Unit: 10,000, %)

By legal status and size of capital	Total enterprises		Enterprises with 1 establishment		Enterprises with 2 establishments		Enterprise with 3 to 5 establishments		Enterprises with 6 or more establishments	
		Y/Y		Y/Y		Y/Y		Y/Y		Y/Y
Total	96,202	4.2	36,527	5.1	292,425	4.6	1,472,774	7.2	15,501,566	4.6
Total corporations	119,333	4.7	45,240	5.7	298,452	4.7	1,489,561	7.4	16,050,153	4.8
capital less than 10 million yen	8,663	-0.4	8,348	-0.3	25,713	-0.9	x	x	x	x
capital more than 10 to less than 30 million yen	32,931	1.4	28,390	1.2	85,495	2.1	167,386	4.5	305,589	2.8
capital more than 30 to less than 50 million yen	109,425	1.7	86,045	2.5	189,266	2.8	x	x	x	x
capital more than 50 to less than 100 million yen	220,249	2.6	168,707	3.1	298,374	1.6	507,514	4.0	1,146,880	4.4
capital more than 100 to less than 300 million yen	453,216	-1.2	344,029	0.6	560,392	-1.1	812,259	-0.6	1,619,561	-3.1
capital more than 300 million to less than 1 billion yen	974,021	7.0	764,898	9.7	1,012,706	3.3	1,422,963	11.1	2,763,494	-14.9
capital more than 1 to less than 10 billion yen	2,276,315	0.2	1,593,637	5.0	2,225,405	4.0	2,929,972	-3.1	4,256,896	-1.6
capital more than 10 billion yen	22,057,751	3.3	4,960,265	35.5	8,891,705	0.5	15,436,060	6.1	42,846,645	4.6
Associations and others	63,935	-5.1	39,869	-1.6	155,535	-11.9	x	x	x	x
Individual enterprises	3,548	-3.5	3,503	-3.5	13,189	-11.2	x	x	x	x

- (ii) The value of shipment per enterprise with 1 establishment was 365.27 million yen. By legal status, value of shipment per corporation was 452.4 million yen, of which value of shipment per corporation that capitalized at 10 billion yen or more was 49.6265 billion yen, and value of shipment per corporation that capitalized at 1 to 10 billion yen was 15.93637 billion yen. In addition, value of shipment per association or other was 398.69 million yen and value of shipment per individual enterprise was 35.03 million yen.

The value of shipment per enterprise with 2 establishments totaled 2.92425 billion. By legal status, value of shipment per corporation was 2.98452 billion yen, of which value of shipment per corporation that capitalized at 10 billion yen or more was significantly higher at 88.91705 billion yen. Also, value of shipment per association or other was 1.55535 billion yen and value of shipment per individual enterprise was 131.89 million yen.

The value of shipment per enterprise with 3 to 5 establishments totaled 14.72774 billion yen. By legal status, value of shipment per corporation was 14.89561 billion yen, of which value of shipment per corporation that capitalized at 10 billion yen or more was noticeably higher at 154.3606 billion yen.

The value of shipment per enterprise with 6 or more establishments totaled 155.01566 billion yen. By legal status, value of shipment per corporation was 160.5153 billion yen, of which value of shipment per corporation that capitalized at 10 billion yen or more was particularly high at 428.46645 billion yen.

In addition, compared to the previous year, value of shipment per enterprise increased in terms of total enterprises. However, by legal status, the value of shipment per association or other and individual enterprise showed a decrease, and value of shipment per corporation that capitalized at less than 10 million yen and corporation that capitalized at 100 to 300 million yen showed a decrease.

II. Survey Tables on Establishments

The survey tables of establishments indicate the activities of manufacturing establishments with 4 or more employees by counting establishments by legal status and size of capital.

1. Number of establishments

- (1) The number of manufacturing establishments with 4 or more employees in 2000 numbered 341,421 (down 1.2% compared to the previous year) (Table 7).

When observing the number of establishments by legal status (Figure 5), the number of corporations was 276,882 (down 1.5% id.), accounting for 81.1% of the total. That of associations and others numbered 3,120 (down 1.9% id.), accounting for 0.9%, and that of individual enterprises was 61,419 (up 0.4% id.), accounting for 18.0%.

When viewing characteristics of the number of establishments of each legal status by industry (Figure 6), the percentage of corporations was high in all industries, of which over 90% belong to the following industries: chemical and allied products (composition ratio of 96.3%), petroleum and coal products (93.6% id.) and iron and steel (92.3%). The proportion of establishments of individual enterprises was relatively high in the following industries: leather tanning, leather products and fur skins (42.7% id.), apparel and other finished products (31.9% id.), textile mill products (28.5% id.), furniture and fixtures (28.3%) and rubber products (27.6%).

Figure 5: Composition ratio of the number of establishments by legal organization

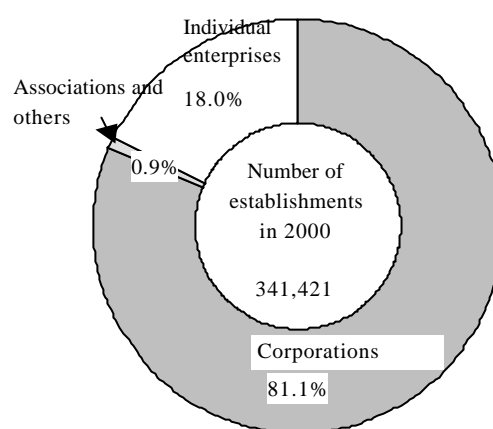
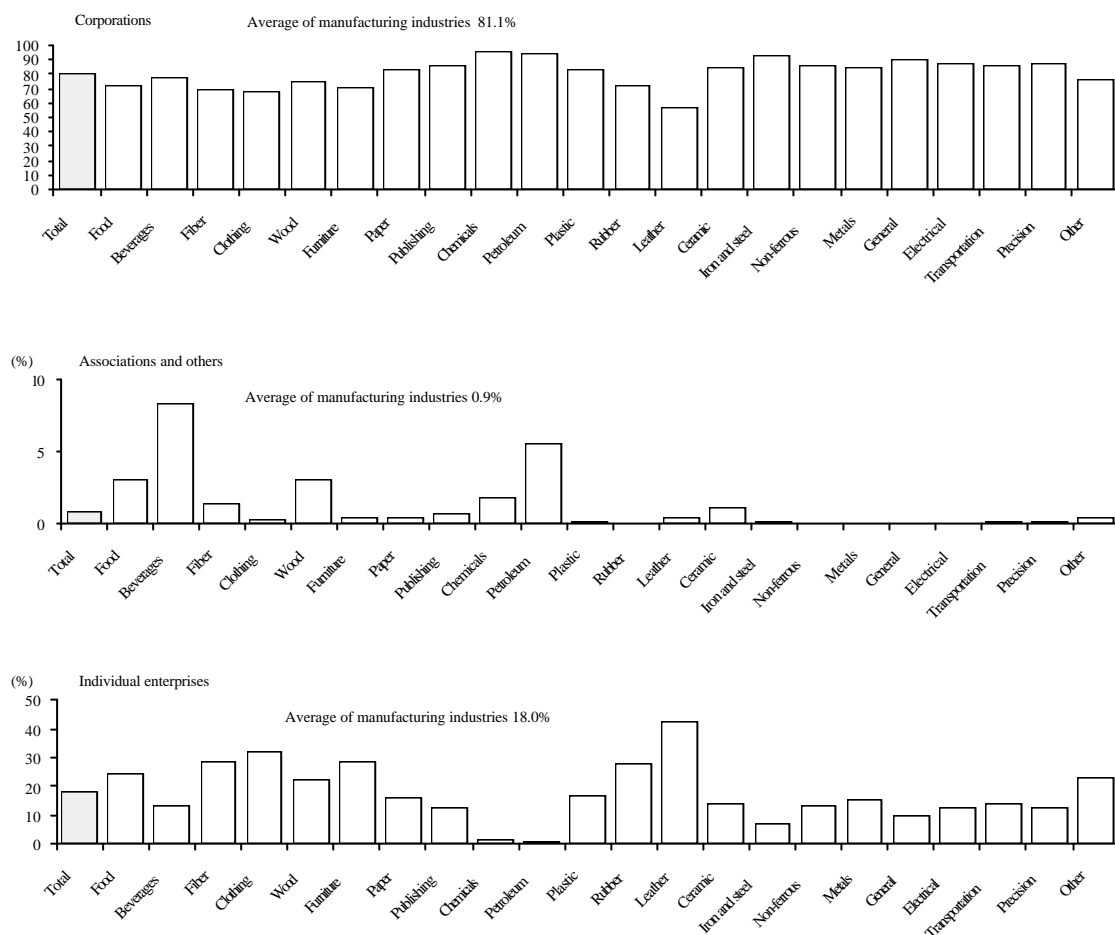
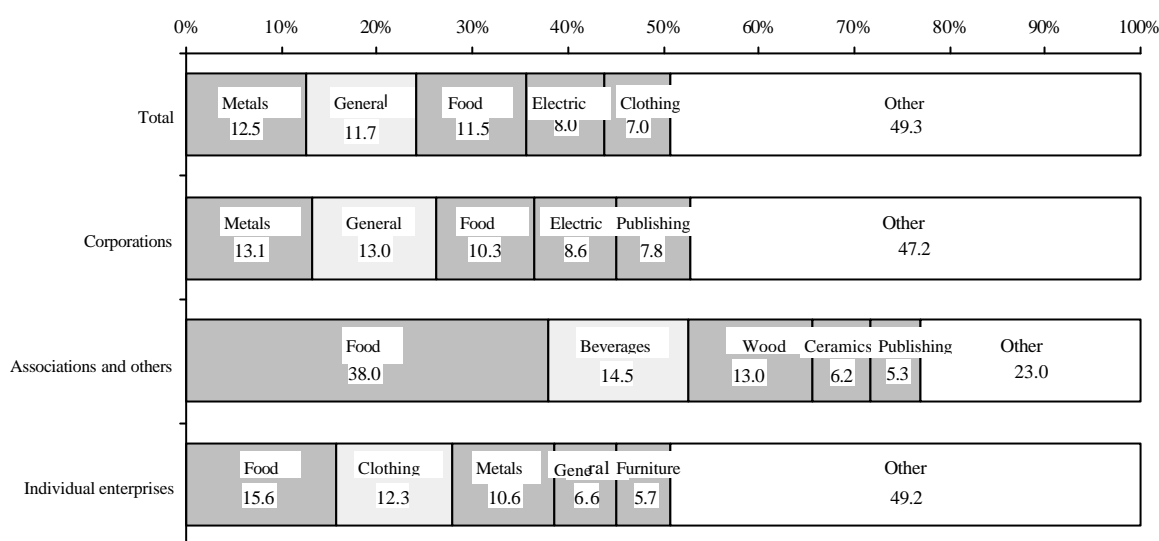


Figure 6: Percentages of the number of establishments of each legal status by industry



- (2) Considering the number of establishments of each legal status by industry (Table 7, Figure 7), the ratio of the number of corporations was high in the following industries: fabricated metal products (composition ratio of 13.1%), general machinery (13.0% id.), food (10.3% id.) and electrical machinery equipment and supplies (8.6% id.). That of associations and others was high in the food industry (38.0% id.), followed by the beverages, tobacco and feed industry (14.5% id.) and the lumber and wood products industry (13.0% id.). That of individual enterprises was high in the food industry (15.6% id.), the apparel and other finished products industry (12.3%) and the fabricated metal products industry (10.6% id.).

Figure 7: Composition ratio of the number of establishments by each legal status and industry



- (3) Looking at the ratio of establishments belonging to corporations by size of capital (Table 7), establishments capitalized at less than 30 million yen accounted for slightly more than 80%: corporations that capitalized at 10 to 30 million yen showed 47.0%, followed by corporations that capitalized at less than 10 million yen at 34.2%.

When observing the characteristics of size of capital groups by industry (Table 7), establishments ranged from a little less than 40 to a little more than 50% in all industries, except for those of the petroleum and coal products industry and furniture and fixtures. In addition, corporations that capitalized at less than 10 million yen were below the 5% level in both the chemical and allied products industry and the petroleum and coal products industry. With regards to the petroleum and coal products industry, corporations that capitalized at 10 billion yen or more (24.4% of the petroleum and coal products industry in total) marked the highest ratio, followed by corporations that capitalized at 10 to 30 million yen (composition ratio of 21.5%) and corporations that capitalized at 1 to 10 billion yen (15.4% id.), demonstrating that corporations that capitalized at 100 million yen or more accounted for over 50% of the total. As for the chemical industry, though establishments of corporations that capitalized at 10 to 30 million yen marked the highest level at 37.1%, while those of other size of capital groups hovered around 10%. In the furniture and fixtures industry, corporate establishments that capitalized at less than 10 million yen accounted for 50.0% and corporations that capitalized at 10 to 30 million yen accounted for 41.0%, indicating that those of corporations that capitalized at less than 30 million yen accounted for 90%.

Table 7: Number of establishments by industry, legal status and size of capital

(i) Number of establishments

Industry	Total	Total corporations	Less than 10 million yen	More than 10 million yen less than 30 million yen	More than 30 million yen less than 50 million yen	More than 50 million yen less than 100 million yen	More than 100 million yen less than 300 million yen	More than 300 million yen less than 1 billion yen	More than 1 billion yen less than 10 billion yen	More than 10 billion yen	Associations and others	Individual enterprises
Total	341,421	276,882	94,568	130,198	19,222	14,012	6,304	4,794	4,637	3,147	3,120	61,419
12 Food	39,395	28,644	10,108	12,485	2,182	1,693	807	574	531	264	1,187	9,564
13 Beverages, tobacco and feed	5,376	4,191	795	2,160	403	288	142	127	146	130	451	734
14 Textile mill products	11,384	7,976	2,500	4,203	558	370	154	70	72	49	163	3,245
15 Apparel and other finished products made from fabrics and similar materials	23,735	16,099	6,401	8,106	901	492	109	47	34	9	73	7,563
16 Lumber and wood products	12,984	9,637	3,613	4,731	637	361	160	78	48	9	405	2,942
17 Furniture and fixtures	12,417	8,843	4,418	3,622	383	230	62	56	49	23	59	3,515
18 Pulp, paper and paper products	9,589	8,014	2,212	4,020	647	414	220	211	155	135	40	1,535
19 Publishing, printing and allied products	24,876	21,482	7,734	11,300	1,062	728	340	167	98	53	165	3,229
20 Chemical and allied products	5,263	5,066	214	1,878	568	605	475	349	563	414	98	99
21 Petroleum and coal products	1,137	1,064	33	229	121	108	85	64	164	260	63	10
22 Plastic products	18,875	15,642	5,325	7,247	1,127	818	428	340	248	109	21	3,212
23 Rubber products	4,277	3,094	1,032	1,494	208	133	71	69	43	44	2	1,181
24 Leather tanning, leather products and fur skins	3,594	2,043	764	1,088	107	58	12	9	5	-	15	1,536
25 Ceramic, stone and clay products	17,388	14,718	3,585	6,562	1,767	1,309	554	431	376	134	193	2,477
26 Iron and steel	5,154	4,759	892	2,217	547	409	244	189	150	111	12	383
27 Non-ferrous metals and products	3,575	3,097	884	1,279	271	215	131	133	102	82	2	476
28 Fabricated metal products	42,807	36,283	14,285	17,219	2,128	1,288	478	393	314	178	31	6,493
29 General machinery	39,943	35,891	12,318	17,674	2,291	1,758	628	412	498	312	29	4,023
30 Electrical machinery, equipment and supplies	27,282	23,779	7,210	10,938	1,741	1,575	690	570	527	528	16	3,487
31 Transportation equipment	13,342	11,413	4,071	4,663	786	675	292	330	365	231	23	1,906
32 Precision instruments and machinery	5,481	4,776	1,730	2,160	342	225	121	89	84	25	7	698
34 Miscellaneous manufacturing products	13,547	10,371	4,444	4,923	445	260	101	86	65	47	65	3,111

(ii) Year-on-year comparison

Industry	Total	Total corporations	Less than 10 million yen	More than 10 million yen less than 30 million yen	More than 30 million yen less than 50 million yen	More than 50 million yen less than 100 million yen	More than 100 million yen less than 300 million yen	More than 300 million yen less than 1 billion yen	More than 1 billion yen less than 10 billion yen	More than 10 billion yen	Associations and others	Individual enterprises
Total	- 1.2	- 1.5	- 0.1	- 2.7	- 2.1	- 0.4	- 3.0	5.6	- 0.7	- 1.2	- 1.9	0.4
12 Food	- 0.7	- 1.2	- 0.6	- 2.2	- 0.8	1.1	- 0.7	2.3	- 2.2	- 1.1	0.1	0.9
13 Beverages, tobacco and feed	3.2	0.5	2.8	- 0.2	2.0	1.4	- 2.1	3.3	- 0.7	- 6.5	4.9	20.1
14 Textile mill products	- 7.5	- 6.8	- 7.2	- 7.0	- 4.6	- 5.6	- 9.9	- 5.4	1.4	- 3.9	- 10.9	- 9.0
15 Apparel and other finished products made from fabrics and similar materials	- 8.1	- 8.0	- 7.1	- 8.8	- 7.9	- 3.5	- 10.7	- 16.1	- 5.6	- 40.0	- 18.0	- 8.1
16 Lumber and wood products	- 3.1	- 3.1	- 2.0	- 3.7	- 4.1	- 4.0	- 5.9	- 1.3	0.0	- 18.2	0.5	- 3.5
17 Furniture and fixtures	- 4.5	- 4.2	- 4.4	- 4.5	- 0.5	- 1.7	- 1.6	- 1.8	- 7.5	- 8.0	- 18.1	- 4.9
18 Pulp, paper and paper products	- 1.3	- 1.7	- 0.1	- 2.6	- 6.0	0.7	- 10.9	11.6	12.3	- 4.3	- 14.9	1.3
19 Publishing, printing and allied products	- 1.6	- 2.0	- 1.2	- 2.8	- 2.2	1.3	- 0.6	7.1	- 3.9	- 5.4	- 4.6	1.3
20 Chemical and allied products	- 0.3	- 0.2	0.9	- 1.9	- 1.6	1.9	0.2	7.1	- 0.5	0.0	- 3.0	- 2.9
21 Petroleum and coal products	- 1.6	- 1.5	3.1	1.8	- 9.0	0.9	- 8.6	8.5	- 3.5	- 0.4	- 1.6	- 16.7
22 Plastic products	1.6	1.1	3.4	- 0.9	0.4	- 0.1	1.9	12.2	6.9	- 4.4	- 4.5	4.0
23 Rubber products	- 1.8	- 1.3	1.3	- 3.8	- 2.8	3.1	- 1.4	9.5	7.5	- 2.2	0.0	- 3.2
24 Leather tanning, leather products and fur skins	- 8.6	- 6.9	- 6.1	- 8.1	- 5.3	1.8	- 7.7	0.0	0.0	-	- 21.1	- 10.6
25 Ceramic, stone and clay products	- 1.8	- 1.8	- 1.2	- 2.4	- 1.2	- 3.5	- 0.7	5.6	- 1.6	- 1.5	- 4.9	- 1.7
26 Iron and steel	- 1.3	- 2.0	- 0.6	- 3.3	- 2.3	0.0	- 4.7	8.0	- 0.7	- 3.5	9.1	7.3
27 Non-ferrous metals and products	0.1	- 1.6	0.7	- 4.5	- 1.1	0.0	- 9.0	12.7	6.3	- 2.4	100.0	12.3
28 Fabricated metal products	1.0	- 0.2	2.2	- 1.9	0.0	0.8	- 4.4	- 0.5	- 4.3	- 5.8	- 8.8	8.1
29 General machinery	2.4	1.2	4.4	- 0.6	- 1.3	0.5	1.1	6.7	- 1.8	2.6	0.0	15.3
30 Electrical machinery, equipment and supplies	- 0.9	- 1.4	- 0.2	- 2.5	- 1.1	- 1.7	- 0.7	1.4	- 1.1	1.7	0.0	2.8
31 Transportation equipment	0.1	- 0.6	1.0	- 1.6	- 5.3	1.0	- 14.1	17.9	- 1.1	0.9	- 8.0	4.8
32 Precision instruments and machinery	0.2	- 0.3	2.0	- 1.1	- 5.5	- 2.2	- 3.2	7.2	- 1.2	0.0	0.0	4.0
34 Miscellaneous manufacturing products	- 0.2	- 1.3	- 0.4	- 1.9	- 3.9	1.2	- 11.4	10.3	- 7.1	4.4	1.6	3.8

Table 7: Number of establishments by industry, legal status and size of capital (Continuity)

(iii) Composition ratio by industry

(Unit: %)

Industry	Total	Total corporations	Associations and others	Individual enterprises
Total	100.0	100.0	100.0	100.0
12 Food	11.5	10.3	38.0	15.6
13 Beverages, tobacco and feed	1.6	1.5	14.5	1.2
14 Textile mill products	3.3	2.9	5.2	5.3
15 Apparel and other finished products made from fabrics and similar materials	7.0	5.8	2.3	12.3
16 Lumber and wood products	3.8	3.5	13.0	4.8
17 Furniture and fixtures	3.6	3.2	1.9	5.7
18 Pulp, paper and paper products	2.8	2.9	1.3	2.5
19 Publishing, printing and allied products	7.3	7.8	5.3	5.3
20 Chemical and allied products	1.5	1.8	3.1	0.2
21 Petroleum and coal products	0.3	0.4	2.0	0.0
22 Plastic products	5.5	5.6	0.7	5.2
23 Rubber products	1.3	1.1	0.1	1.9
24 Leather tanning, leather products and fur skins	1.1	0.7	0.5	2.5
25 Ceramic, stone and clay products	5.1	5.3	6.2	4.0
26 Iron and steel	1.5	1.7	0.4	0.6
27 Non-ferrous metals and products	1.0	1.1	0.1	0.8
28 Fabricated metal products	12.5	13.1	1.0	10.6
29 General machinery	11.7	13.0	0.9	6.6
30 Electrical machinery, equipment and supplies	8.0	8.6	0.5	5.7
31 Transportation equipment	3.9	4.1	0.7	3.1
32 Precision instruments and machinery	1.6	1.7	0.2	1.1
34 Miscellaneous manufacturing products	4.0	3.7	2.1	5.1

(iv) Composition ratio by legal organization

(Unit: %)

Industry	Total	Total corporations	Associations and others	Individual enterprises
Total	100.0	81.1	0.9	18.0
12 Food	100.0	72.7	3.0	24.3
13 Beverages, tobacco and feed	100.0	78.0	8.4	13.7
14 Textile mill products	100.0	70.1	1.4	28.5
15 Apparel and other finished products made from fabrics and similar materials	100.0	67.8	0.3	31.9
16 Lumber and wood products	100.0	74.2	3.1	22.7
17 Furniture and fixtures	100.0	71.2	0.5	28.3
18 Pulp, paper and paper products	100.0	83.6	0.4	16.0
19 Publishing, printing and allied products	100.0	86.4	0.7	13.0
20 Chemical and allied products	100.0	96.3	1.9	1.9
21 Petroleum and coal products	100.0	93.6	5.5	0.9
22 Plastic products	100.0	82.9	0.1	17.0
23 Rubber products	100.0	72.3	0.0	27.6
24 Leather tanning, leather products and fur skins	100.0	56.8	0.4	42.7
25 Ceramic, stone and clay products	100.0	84.6	1.1	14.2
26 Iron and steel	100.0	92.3	0.2	7.4
27 Non-ferrous metals and products	100.0	86.6	0.1	13.3
28 Fabricated metal products	100.0	84.8	0.1	15.2
29 General machinery	100.0	89.9	0.1	10.1
30 Electrical machinery, equipment and supplies	100.0	87.2	0.1	12.8
31 Transportation equipment	100.0	85.5	0.2	14.3
32 Precision instruments and machinery	100.0	87.1	0.1	12.7
34 Miscellaneous manufacturing products	100.0	76.6	0.5	23.0

(v) Composition ratio by size of capital of legal status

(Unit: %)

Industry	Total corporations	Less than 10 million yen	More than 10 million yen less than 30 million yen	More than 30 million yen less than 50 million yen	More than 50 million yen less than 100 million yen	More than 100 million yen less than 300 million yen	More than 300 million yen less than 1 billion yen	More than 1 billion yen less than 10 billion yen	More than 10 billion yen
Total	100.0	34.2	47.0	6.9	5.1	2.3	1.7	1.7	1.1
12 Food	100.0	35.3	43.6	7.6	5.9	2.8	2.0	1.9	0.9
13 Beverages, tobacco and feed	100.0	19.0	51.5	9.6	6.9	3.4	3.0	3.5	3.1
14 Textile mill products	100.0	31.3	52.7	7.0	4.6	1.9	0.9	0.9	0.6
15 Apparel and other finished products made from fabrics and similar materials	100.0	39.8	50.4	5.6	3.1	0.7	0.3	0.2	0.1
16 Lumber and wood products	100.0	37.5	49.1	6.6	3.7	1.7	0.8	0.5	0.1
17 Furniture and fixtures	100.0	50.0	41.0	4.3	2.6	0.7	0.6	0.6	0.3
18 Pulp, paper and paper products	100.0	27.6	50.2	8.1	5.2	2.7	2.6	1.9	1.7
19 Publishing, printing and allied products	100.0	36.0	52.6	4.9	3.4	1.6	0.8	0.5	0.2
20 Chemical and allied products	100.0	4.2	37.1	11.2	11.9	9.4	6.9	11.1	8.2
21 Petroleum and coal products	100.0	3.1	21.5	11.4	10.2	8.0	6.0	15.4	24.4
22 Plastic products	100.0	34.0	46.3	7.2	5.2	2.7	2.2	1.6	0.7
23 Rubber products	100.0	33.4	48.3	6.7	4.3	2.3	2.2	1.4	1.4
24 Leather tanning, leather products and fur skins	100.0	37.4	53.3	5.2	2.8	0.6	0.4	0.2	-
25 Ceramic, stone and clay products	100.0	24.4	44.6	12.0	8.9	3.8	2.9	2.6	0.9
26 Iron and steel	100.0	18.7	46.6	11.5	8.6	5.1	4.0	3.2	2.3
27 Non-ferrous metals and products	100.0	28.5	41.3	8.8	6.9	4.2	4.3	3.3	2.6
28 Fabricated metal products	100.0	39.4	47.5	5.9	3.5	1.3	1.1	0.9	0.5
29 General machinery	100.0	34.3	49.2	6.4	4.9	1.7	1.1	1.4	0.9
30 Electrical machinery, equipment and supplies	100.0	30.3	46.0	7.3	6.6	2.9	2.4	2.2	2.2
31 Transportation equipment	100.0	35.7	40.9	6.9	5.9	2.6	2.9	3.2	2.0
32 Precision instruments and machinery	100.0	36.2	45.2	7.2	4.7	2.5	1.9	1.8	0.5
34 Miscellaneous manufacturing products	100.0	42.9	47.5	4.3	2.5	1.0	0.8	0.6	0.5

2. Number of employees

- (1) The number of employees of manufacturing establishments with 4 or more employees in 2000 was 9,183,833 (down 2.1% compared to the previous year) (Table 8).

By legal status (Figure 8), the number of employees of corporations was 8,731,498, accounting for 95.1% of the total. That of the establishments of associations and others was 73,530 (composition ratio of 0.8%) and that of the establishments of individual enterprises was 378,805 (4.1% id.).

By industry and legal status (Table 8), the number of employees of corporations accounted for over 80% in most industries, of which most belonged to corporations in the following industries: the iron and steel industry (98.9% id.), the transportation machinery industry (98.5% id.), the petroleum and coal products industry (98.2% id.), the electrical machinery, equipment and supplies industry 98.1%), general machinery (97.8%) and the chemical and allied products industry (97.5%).

- (2) By legal status of each industry (Table 8, Figure 9), the number of employees of corporations was large in the following industries: electrical machinery, equipment and supplies (composition ratio of 17.7%), food (11.8 id.), general machinery (11.7% id.) and transportation machinery (9.6% id.). The number of employees of associations and others was overwhelming in the food industry (41.8% id.), followed by the chemical and allied products industry (11.8% id.), the beverages, tobacco and feed industry (9.9% id.) and the publishing, printing and allied industry (7.6% id.). The number of employees of individual enterprises was large in the food industry (16.8% id.), the apparel and other finished products industry (13.2% id.) and the fabricated metal products industry (9.6% id.).

Figure 8: Composition ratio of the number of employees by legal organization

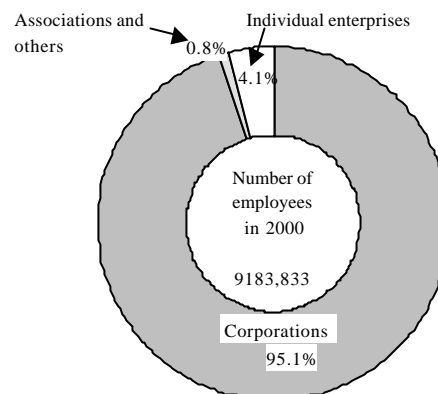
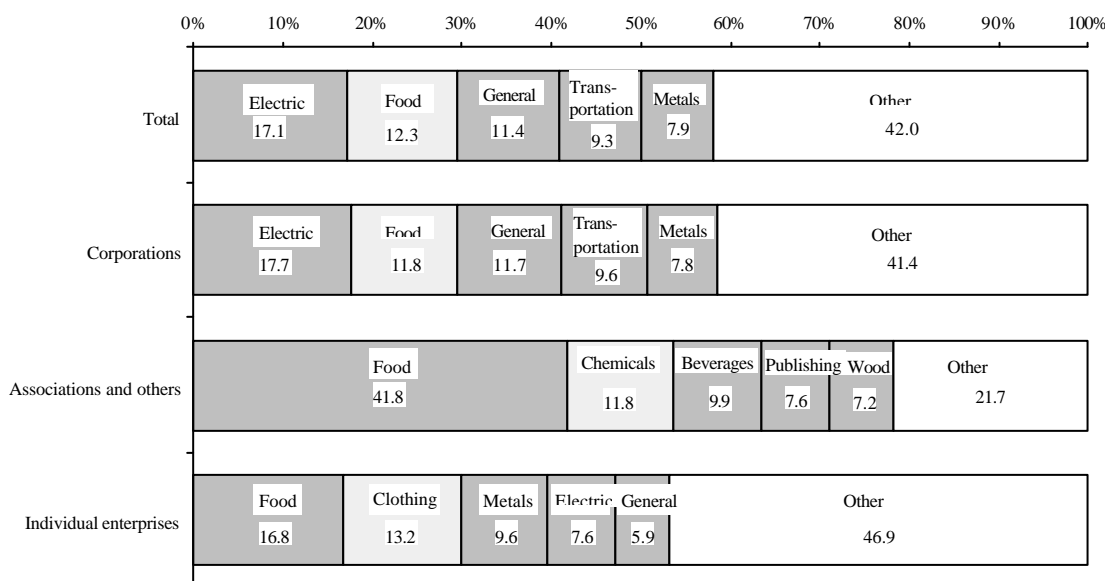


Figure 9: Composition ratio of the number of employees by legal status and industry



- (3) By size of capital (Table 8), the number of employees of corporations that capitalized at 10 to 30 million yen accounted for 28.3%, while those with capital of 10 billion yen or more accounted for 18.2%, and those with capital of 1 to 10 billion yen accounted for 10.2%. Those with capital of 50 to 100 million yen accounted for 10.2%, those with capital of less than 10 million yen accounted for 10.0%, and those with capital of 30 to 50 million yen accounted for 9.2%.

When viewing the characteristics by size of capital and industry, the ratio of the number of employees was high at corporations with capital of 10 billion yen or more in the following industries: petroleum and coal products (composition ratio of 40.3% in the relevant industries at corporations with capital of 10 million yen or more), the transportation machinery industry (39.6% id.), the chemical industry (39.2% id.), the iron and steel industry (37.2% id.), the electrical machinery, equipment and supplies industry (29.0% id.). On the other hand, corporations with capital of less than 30 million yen in each of the following industries accounted for over 50%: the clothing and other textile products industry, leather tanning, leather products and fur skins industry, the lumber and wood products industry, the fabricated metal products industry and the publishing, printing and allied industry.

Table 8: Number of employees by industry, legal status and size of capital

(i) Number of employees

(Unit: person)

Industry	Total										Associations and others	Individual enterprises
		Total corporations	Less than 10 million yen	More than 10 million yen less than 30 million yen	More than 30 million yen less than 50 million yen	More than 50 million yen less than 100 million yen	More than 100 million yen less than 300 million yen	More than 300 million yen less than 1 billion yen	More than 1 billion yen less than 10 billion yen	More than 10 billion yen		
Total	9,183,833	8,731,498	870,772	2,471,394	798,974	889,117	584,807	641,576	889,541	1,585,317	73,530	378,805
12 Food	1,127,177	1,032,854	115,515	325,054	123,473	137,772	94,678	77,859	89,804	68,699	30,741	63,582
13 Beverages, tobacco and feed	112,658	101,343	6,904	31,107	9,501	12,371	5,707	8,352	8,705	18,696	7,262	4,053
14 Textile mill products	184,004	163,375	18,847	61,059	18,780	21,015	15,601	8,173	11,461	8,439	2,677	17,952
15 Apparel and other finished products made from fabrics and similar materials	386,727	334,447	72,111	170,880	39,363	32,807	10,711	4,143	3,140	1,292	2,178	50,102
16 Lumber and wood products	162,905	140,623	29,122	63,274	15,785	12,921	8,715	4,908	5,079	819	5,326	16,956
17 Furniture and fixtures	163,838	144,242	33,452	53,959	15,693	12,878	5,079	5,859	7,142	10,180	784	18,812
18 Pulp, paper and paper products	242,969	232,950	19,280	77,608	27,798	23,457	16,199	15,086	20,887	32,635	750	9,269
19 Publishing, printing and allied products	502,184	479,052	58,961	189,568	48,909	50,447	41,462	44,586	25,740	19,379	5,554	17,578
20 Chemical and allied products	365,953	356,651	2,227	36,542	18,620	32,707	31,931	29,987	64,916	139,721	8,690	612
21 Petroleum and coal products	27,145	26,657	288	2,652	1,587	1,683	1,595	1,588	6,509	10,755	424	64
22 Plastic products	433,177	411,749	50,147	138,869	46,921	46,437	36,436	34,309	32,097	26,533	518	20,910
23 Rubber products	131,532	123,261	10,811	30,720	9,748	10,868	7,471	11,006	15,776	26,861	x	x
24 Leather tanning, leather products and fur skins	44,233	33,498	6,447	17,336	3,908	2,947	1,174	902	784	-	176	10,559
25 Ceramic, stone and clay products	363,997	346,920	33,376	112,550	43,032	38,647	23,246	22,720	34,128	39,221	3,074	14,003
26 Iron and steel	236,525	233,976	7,236	37,056	18,703	21,167	17,450	18,383	26,904	87,077	320	2,229
27 Non-ferrous metals and products	141,872	137,560	7,546	23,493	10,257	12,556	10,061	16,098	19,285	38,264	x	x
28 Fabricated metal products	722,425	685,166	112,963	270,059	74,900	70,041	31,121	35,584	43,533	46,965	853	36,406
29 General machinery	1,043,890	1,021,099	92,506	294,862	94,237	104,600	61,397	60,837	113,934	198,726	610	22,181
30 Electrical machinery, equipment and supplies	1,573,683	1,544,559	99,475	309,239	103,862	150,822	101,889	150,526	181,051	447,695	505	28,619
31 Transportation equipment	849,517	837,012	42,745	113,256	42,841	59,502	39,039	63,428	144,598	331,603	345	12,160
32 Precision instruments and machinery	172,066	167,475	17,140	43,034	16,207	19,542	15,328	16,183	21,944	18,097	212	4,379
34 Miscellaneous manufacturing products	195,356	177,029	33,673	69,217	14,849	13,930	8,517	11,059	12,124	13,660	1,139	17,188

(ii) Year-on-year comparison

(Unit: person)

Industry	Total										Associations and others	Individual enterprises
		Total corporations	Less than 10 million yen	More than 10 million yen less than 30 million yen	More than 30 million yen less than 50 million yen	More than 50 million yen less than 100 million yen	More than 100 million yen less than 300 million yen	More than 300 million yen less than 1 billion yen	More than 1 billion yen less than 10 billion yen	More than 10 billion yen		
Total	- 2.1	- 2.1	- 1.5	- 3.1	- 1.8	0.2	- 4.7	3.9	- 1.7	- 3.6	- 0.8	- 1.9
12 Food	- 0.6	- 0.5	- 2.2	- 1.9	0.3	1.9	- 0.3	1.6	0.3	0.0	- 2.6	- 1.6
13 Beverages, tobacco and feed	- 2.2	- 3.1	0.3	- 2.4	3.6	- 0.5	- 5.6	5.5	- 14.2	- 7.2	2.4	16.3
14 Textile mill products	- 8.6	- 8.4	- 7.1	- 7.9	- 4.0	- 7.7	- 12.9	- 10.6	- 11.3	- 11.4	- 8.7	- 9.8
15 Apparel and other finished products made from fabrics and similar materials	- 12.0	- 12.2	- 10.1	- 13.6	- 11.3	- 9.4	- 11.8	- 22.1	10.9	- 33.9	- 12.1	- 11.1
16 Lumber and wood products	- 4.8	- 4.9	- 4.1	- 4.9	- 2.9	- 3.5	- 7.0	- 4.4	- 1.6	- 49.3	3.4	- 6.0
17 Furniture and fixtures	- 4.9	- 4.7	- 5.0	- 6.0	- 2.1	- 5.8	- 2.2	- 4.6	- 2.5	- 1.7	- 20.9	- 5.3
18 Pulp, paper and paper products	- 2.9	- 3.0	- 1.6	- 4.5	- 3.0	2.5	- 8.5	5.6	1.1	- 7.3	- 18.8	1.6
19 Publishing, printing and allied products	- 2.8	- 2.8	- 3.2	- 4.1	- 5.3	1.5	- 0.8	1.2	0.4	- 10.4	- 4.2	- 0.9
20 Chemical and allied products	- 1.3	- 1.3	1.3	- 2.6	- 3.5	1.7	- 2.3	11.1	0.0	- 4.0	- 0.6	- 5.7
21 Petroleum and coal products	- 6.1	- 6.1	7.5	0.0	- 10.9	0.9	- 13.1	4.3	- 21.7	3.9	- 3.0	- 9.9
22 Plastic products	0.7	0.6	3.3	- 0.3	2.9	- 1.8	0.2	8.3	5.9	- 11.8	16.9	1.0
23 Rubber products	- 2.4	- 2.3	1.6	- 4.3	- 7.9	7.4	- 12.3	3.0	x	x	x	x
24 Leather tanning, leather products and fur skins	- 7.9	- 6.8	- 6.8	- 9.5	- 0.4	- 1.7	- 5.0	- 3.6	- 0.4	-	- 31.0	- 10.6
25 Ceramic, stone and clay products	- 2.5	- 2.4	- 2.5	- 3.8	- 1.6	- 1.9	- 3.9	2.5	0.5	- 4.2	- 4.1	- 3.3
26 Iron and steel	- 2.5	- 2.6	- 3.6	- 2.4	- 2.3	1.2	- 8.8	7.6	- 1.8	- 4.3	0.6	1.4
27 Non-ferrous metals and products	0.8	- 0.4	1.8	- 2.3	- 0.2	0.0	- 14.4	16.9	x	x	x	x
28 Fabricated metal products	- 0.8	- 1.1	1.3	- 2.0	2.2	2.7	- 4.7	0.8	- 8.9	- 3.5	- 10.3	6.3
29 General machinery	0.2	0.0	3.1	0.5	- 1.5	- 0.9	- 0.6	5.9	- 1.8	- 1.4	3.6	12.0
30 Electrical machinery, equipment and supplies	- 1.9	- 1.9	0.0	- 1.2	- 0.2	0.7	- 4.9	1.0	- 1.9	- 4.4	3.7	0.7
31 Transportation equipment	- 0.9	- 0.9	0.0	0.5	- 2.7	4.2	- 15.8	11.9	- 1.5	- 1.9	- 13.1	1.0
32 Precision instruments and machinery	- 3.5	- 3.6	3.4	- 2.1	- 8.9	- 1.1	- 2.8	4.3	- 8.2	- 11.1	- 27.9	1.9
34 Miscellaneous manufacturing products	- 1.9	- 2.2	- 2.7	- 4.2	- 6.1	0.8	- 9.5	8.1	- 2.3	9.4	8.2	0.5

Table 8: Number of employees by industry, legal status and size of capital (Continuity)

(iii) Composition ratio by industry

(Unit: %)

Industry	Total	Total corporations	Associations and others	Individual enterprises
Total	100.0	100.0	100.0	100.0
12 Food	12.3	11.8	41.8	16.8
13 Beverages, tobacco and feed	1.2	1.2	9.9	1.1
14 Textile mill products	2.0	1.9	3.6	4.7
15 Apparel and other finished products made from fabrics and similar materials	4.2	3.8	3.0	13.2
16 Lumber and wood products	1.8	1.6	7.2	4.5
17 Furniture and fixtures	1.8	1.7	1.1	5.0
18 Pulp, paper and paper products	2.6	2.7	1.0	2.4
19 Publishing, printing and allied products	5.5	5.5	7.6	4.6
20 Chemical and allied products	4.0	4.1	11.8	0.2
21 Petroleum and coal products	0.3	0.3	0.6	0.0
22 Plastic products	4.7	4.7	0.7	5.5
23 Rubber products	1.4	1.4	x	x
24 Leather tanning, leather products and fur skins	0.5	0.4	0.2	2.8
25 Ceramic, stone and clay products	4.0	4.0	4.2	3.7
26 Iron and steel	2.6	2.7	0.4	0.6
27 Non-ferrous metals and products	1.5	1.6	x	x
28 Fabricated metal products	7.9	7.8	1.2	9.6
29 General machinery	11.4	11.7	0.8	5.9
30 Electrical machinery, equipment and supplies	17.1	17.7	0.7	7.6
31 Transportation equipment	9.3	9.6	0.5	3.2
32 Precision instruments and machinery	1.9	1.9	0.3	1.2
34 Miscellaneous manufacturing products	2.1	2.0	1.5	4.5

(iv) Composition ratio by legal organization

(Unit: %)

Industry	Total	Total corporations	Associations and others	Individual enterprises
Total	100.0	95.1	0.8	4.1
12 Food	100.0	91.6	2.7	5.6
13 Beverages, tobacco and feed	100.0	90.0	6.4	3.6
14 Textile mill products	100.0	88.8	1.5	9.8
15 Apparel and other finished products made from fabrics and similar materials	100.0	86.5	0.6	13.0
16 Lumber and wood products	100.0	86.3	3.3	10.4
17 Furniture and fixtures	100.0	88.0	0.5	11.5
18 Pulp, paper and paper products	100.0	95.9	0.3	3.8
19 Publishing, printing and allied products	100.0	95.4	1.1	3.5
20 Chemical and allied products	100.0	97.5	2.4	0.2
21 Petroleum and coal products	100.0	98.2	1.6	0.2
22 Plastic products	100.0	95.1	0.1	4.8
23 Rubber products	100.0	93.7	x	x
24 Leather tanning, leather products and fur skins	100.0	75.7	0.4	23.9
25 Ceramic, stone and clay products	100.0	95.3	0.8	3.8
26 Iron and steel	100.0	98.9	0.1	0.9
27 Non-ferrous metals and products	100.0	97.0	x	x
28 Fabricated metal products	100.0	94.8	0.1	5.0
29 General machinery	100.0	97.8	0.1	2.1
30 Electrical machinery, equipment and supplies	100.0	98.1	0.0	1.8
31 Transportation equipment	100.0	98.5	0.0	1.4
32 Precision instruments and machinery	100.0	97.3	0.1	2.5
34 Miscellaneous manufacturing products	100.0	90.6	0.6	8.8

(v) Composition ratio of legal status by capital scale

Industry	Total corporations	Less than 10 million yen	More than 10 million yen less than 30 million yen	More than 30 million yen less than 50 million yen	More than 50 million yen less than 100 million yen	More than 100 million yen less than 300 million yen	More than 300 million yen less than 1 billion yen	More than 1 billion yen less than 10 billion yen	More than 10 billion yen
Total	100.0	10.0	28.3	9.2	10.2	6.7	7.3	10.2	18.2
12 Food	100.0	11.2	31.5	12.0	13.3	9.2	7.5	8.7	6.7
13 Beverages, tobacco and feed	100.0	6.8	30.7	9.4	12.2	5.6	8.2	8.6	18.4
14 Textile mill products	100.0	11.5	37.4	11.5	12.9	9.5	5.0	7.0	5.2
15 Apparel and other finished products made from fabrics and similar materials	100.0	21.6	51.1	11.8	9.8	3.2	1.2	0.9	0.4
16 Lumber and wood products	100.0	20.7	45.0	11.2	9.2	6.2	3.5	3.6	0.6
17 Furniture and fixtures	100.0	23.2	37.4	10.9	8.9	3.5	4.1	5.0	7.1
18 Pulp, paper and paper products	100.0	8.3	33.3	11.9	10.1	7.0	6.5	9.0	14.0
19 Publishing, printing and allied products	100.0	12.3	39.6	10.2	10.5	8.7	9.3	5.4	4.0
20 Chemical and allied products	100.0	0.6	10.2	5.2	9.2	9.0	8.4	18.2	39.2
21 Petroleum and coal products	100.0	1.1	9.9	6.0	6.3	6.0	6.0	24.4	40.3
22 Plastic products	100.0	12.2	33.7	11.4	11.3	8.8	8.3	7.8	6.4
23 Rubber products	100.0	8.8	24.9	7.9	8.8	6.1	8.9	12.8	21.8
24 Leather tanning, leather products and fur skins	100.0	19.2	51.8	11.7	8.8	3.5	2.7	2.3	-
25 Ceramic, stone and clay products	100.0	9.6	32.4	12.4	11.1	6.7	6.5	9.8	11.3
26 Iron and steel	100.0	3.1	15.8	8.0	9.0	7.5	7.9	11.5	37.2
27 Non-ferrous metals and products	100.0	5.5	17.1	7.5	9.1	7.3	11.7	14.0	27.8
28 Fabricated metal products	100.0	16.5	39.4	10.9	10.2	4.5	5.2	6.4	6.9
29 General machinery	100.0	9.1	28.9	9.2	10.2	6.0	6.0	11.2	19.5
30 Electrical machinery, equipment and supplies	100.0	6.4	20.0	6.7	9.8	6.6	9.7	11.7	29.0
31 Transportation equipment	100.0	5.1	13.5	5.1	7.1	4.7	7.6	17.3	39.6
32 Precision instruments and machinery	100.0	10.2	25.7	9.7	11.7	9.2	9.7	13.1	10.8
34 Miscellaneous manufacturing products	100.0	19.0	39.1	8.4	7.9	4.8	6.2	6.8	7.7

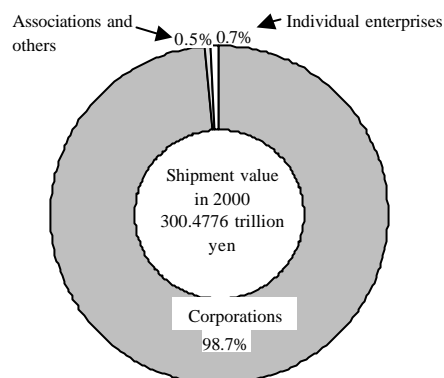
3. Value of shipment

- (1) The value of shipment of establishments with 4 or more employees in 2000 amounted to 300.4776 trillion yen (up 3.1% compared to the previous year) (Table 9).

By legal status (Figure 10), the value of shipment of corporations was valued at 296.6654 trillion yen, accounting for 98.7% of the total, that of establishments of associations and others at 1.6419 trillion yen (composition ratio of 0.5%), and that of establishments of individual enterprises at 2.1704 trillion yen (0.7% id.).

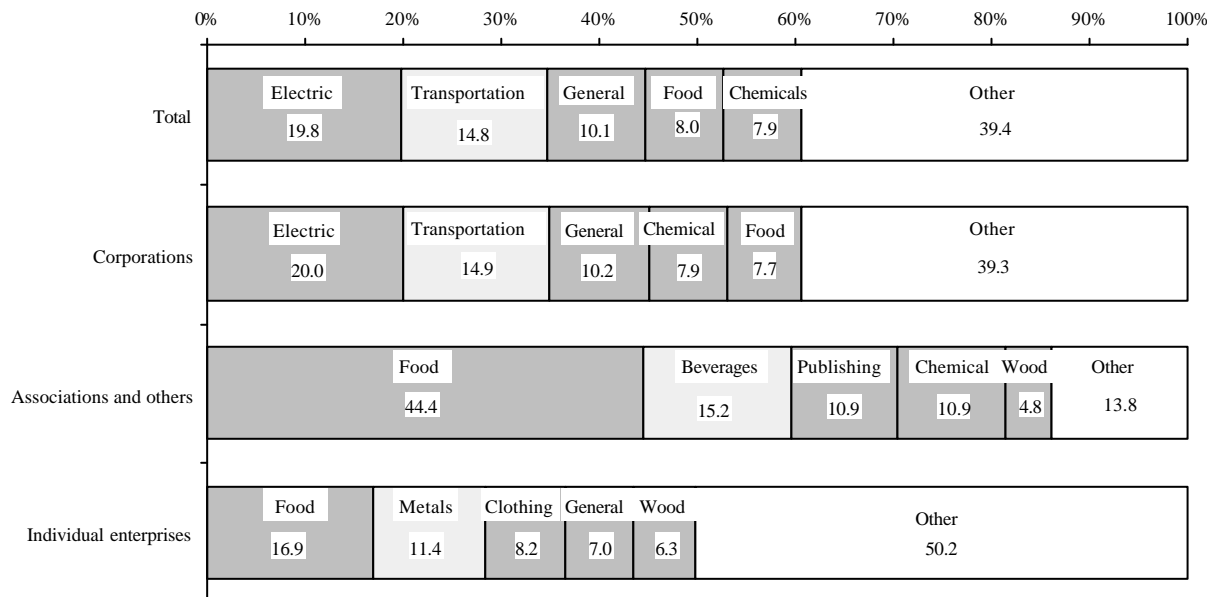
By industry and legal status (Table 9), corporate establishments accounted for over 90% in most industries.

Figure 10: Composition ratio of value of shipment by legal organization



- (2) By legal status and industry (Table 9, Figure 11), the value of shipment of corporate establishments was high in the machinery industries, such as electrical machinery, equipment and supplies (composition ratio of 20.0%), transportation machinery (14.9% id.) and general machinery (10.2% id.). That of establishments of associations and others in the food industry accounted for nearly half (44.4% id.), followed by the beverages, tobacco and feed industry (15.2% id.). That of establishments of individual enterprises was high in the industries of food (16.9% id.), fabricated metal products (11.4% id.) and clothing and other textile products (8.2% id.).

Figure 11: Composition ratio of value of shipment by legal status and industry



- (3) By size of capital (Table 9), the value of shipment of corporations with capital of 10 billion yen or more accounted for 41.0%, followed by those with capital of 1 to 10 billion yen at 14.6% and those with capital of 10 to 30 million yen at 13.4%.

When viewing the characteristics of each industry by size of capital, the value of shipment of establishments that capitalized at less than 30 million yen accounted for a little more than 60% in the leather tanning, leather products and fur skins industry, apparel and other finished products industry. In the petroleum and coal products industry, the value of shipment of establishments that capitalized at 10

billion yen or more accounted for a little more than 70%. Establishments that capitalized at 10 billion yen or more accounted for a little more than 60% included the transportation machinery industry and the beverages, tobacco and feed industry, while the iron and steel industry capitalized at over 10 billion yen accounting for a little more than 50%.

Table 9: Value of shipment by industry, legal status and size of capital

(i) Value of shipment

(Unit: million yen)

Industry	Total	Total corporations	Less than 10 million yen	More than 10 million yen less than 30 million yen	More than 30 million yen less than 50 million yen	More than 50 million yen less than 100 million yen	More than 100 million yen less than 300 million yen	More than 300 million yen less than 1 billion yen	More than 1 billion yen less than 10 billion yen	More than 10 billion yen	Associations and others	Individual enterprises
Total	300,477,604	296,665,371	8,043,705	39,775,148	17,087,754	22,392,755	18,477,603	25,947,928	43,181,691	121,758,787	1,641,850	2,170,383
12 Food	23,888,077	22,790,581	1,088,763	5,141,744	2,432,105	3,039,937	2,417,424	2,269,578	2,992,392	3,408,638	729,753	367,744
13 Beverages, tobacco and feed	10,932,925	10,643,934	140,003	740,353	247,599	512,924	325,618	757,174	1,369,134	6,551,130	250,227	38,764
14 Textile mill products	3,008,080	2,889,082	156,773	889,228	368,000	425,667	298,957	215,957	310,478	224,023	27,172	91,826
15 Apparel and other finished products made from fabrics and similar materials	3,478,958	3,282,977	368,107	1,604,429	519,589	393,448	167,029	71,962	109,997	48,417	16,973	179,008
16 Lumber and wood products	3,194,109	2,978,040	332,101	1,118,669	391,336	335,397	269,110	191,184	253,236	87,007	78,613	137,455
17 Furniture and fixtures	2,703,260	2,565,222	349,312	839,363	313,823	249,772	126,814	179,308	274,216	232,613	10,605	127,432
18 Pulp, paper and paper products	7,933,875	7,873,021	177,258	1,401,342	651,766	656,644	581,524	596,103	1,092,271	2,716,115	15,404	45,450
19 Publishing, printing and allied products	12,778,464	12,495,423	577,418	3,280,248	1,097,975	1,288,949	1,785,649	2,147,184	929,826	1,388,174	179,221	103,820
20 Chemical and allied products	23,762,228	23,578,200	21,921	797,386	556,794	1,152,747	1,401,904	1,577,683	5,074,891	12,994,874	179,744	4,285
21 Petroleum and coal products	9,433,625	9,400,355	4,039	66,139	60,842	85,152	78,090	329,546	2,073,045	6,703,502	31,241	2,030
22 Plastic products	10,486,448	10,353,928	507,822	2,380,382	1,028,522	1,203,020	1,017,125	1,267,561	1,483,970	1,465,526	6,051	126,469
23 Rubber products	3,107,318	3,046,296	93,666	451,317	178,475	215,843	191,920	317,347	457,400	1,140,328	x	x
24 Leather tanning, leather products and fur skins	678,098	586,672	70,301	297,356	87,519	62,106	27,960	19,927	21,503	-	2,247	89,179
25 Ceramic, stone and clay products	8,859,642	8,731,027	356,847	2,109,186	927,514	930,456	608,964	734,515	1,183,607	1,879,937	51,152	77,463
26 Iron and steel	11,927,293	11,898,826	91,556	868,348	640,132	828,964	664,712	822,697	1,416,184	6,566,233	6,910	21,556
27 Non-ferrous metals and products	6,190,520	6,171,774	70,448	506,999	273,845	427,256	387,650	687,554	983,128	2,834,895	x	x
28 Fabricated metal products	15,142,541	14,880,007	1,167,755	4,362,663	1,632,786	1,567,503	820,959	1,039,680	1,862,979	2,425,681	15,487	247,047
29 General machinery	30,398,632	30,235,707	987,307	4,969,588	1,954,417	2,693,200	1,628,924	1,999,114	5,147,411	10,855,747	10,605	152,320
30 Electrical machinery, equipment and supplies	59,448,600	59,346,159	618,898	4,277,699	2,119,295	3,912,368	3,596,681	6,917,944	8,610,126	29,293,146	1,826	100,615
31 Transportation equipment	44,366,979	44,299,784	397,263	2,020,151	1,020,540	1,644,977	1,319,109	2,576,989	6,276,065	29,044,690	5,210	61,985
32 Precision instruments and machinery	4,071,045	4,039,933	143,082	598,324	302,194	405,176	436,129	593,232	718,567	843,228	9,078	22,034
34 Miscellaneous manufacturing products	4,686,887	4,578,422	323,068	1,054,233	282,685	361,248	325,351	635,690	541,264	1,054,883	12,713	95,753

(ii) Year-on-year comparison

(Unit: million yen)

Industry	Total	Total corporations	Less than 10 million yen	More than 10 million yen less than 30 million yen	More than 30 million yen less than 50 million yen	More than 50 million yen less than 100 million yen	More than 100 million yen less than 300 million yen	More than 300 million yen less than 1 billion yen	More than 1 billion yen less than 10 billion yen	More than 10 billion yen	Associations and others	Individual enterprises
Total	3.1	3.2	- 0.5	- 1.3	0.3	2.5	- 2.8	11.6	1.3	5.6	- 6.5	- 3.1
12 Food	- 1.8	- 1.4	- 4.2	- 3.0	- 1.6	- 0.6	- 2.1	5.9	- 1.7	- 2.4	- 11.7	- 5.2
13 Beverages, tobacco and feed	1.9	2.1	1.3	- 3.2	0.9	2.0	- 7.6	- 3.0	- 10.0	7.0	- 5.9	15.1
14 Textile mill products	- 7.0	- 6.9	- 6.8	- 8.0	- 4.8	- 6.1	- 13.5	- 1.4	- 3.8	- 7.4	- 9.1	- 10.0
15 Apparel and other finished products made from fabrics and similar materials	- 10.8	- 10.5	- 10.3	- 11.9	- 5.5	- 11.1	- 7.3	- 29.1	13.7	- 25.0	- 17.8	- 15.7
16 Lumber and wood products	- 3.5	- 3.4	- 4.5	- 5.2	0.7	- 4.6	- 4.4	0.3	1.5	- 5.9	3.8	- 10.5
17 Furniture and fixtures	- 3.6	- 3.5	- 5.0	- 5.4	- 5.6	- 3.2	- 3.0	- 1.1	0.8	1.2	- 17.6	- 4.2
18 Pulp, paper and paper products	0.9	0.9	- 3.0	- 2.9	- 3.9	3.9	- 7.4	8.4	6.5	2.0	- 0.7	- 1.2
19 Publishing, printing and allied products	- 0.8	- 0.8	- 4.1	- 3.7	- 4.4	2.1	1.6	3.5	0.6	- 1.8	0.2	- 3.7
20 Chemical and allied products	3.0	3.0	- 4.9	- 1.0	- 1.6	4.3	- 0.8	13.2	- 0.1	3.8	3.9	- 16.6
21 Petroleum and coal products	17.0	17.1	6.8	4.0	- 8.1	8.3	- 2.6	14.7	- 24.2	42.3	3.6	50.8
22 Plastic products	2.4	2.4	4.2	0.5	3.0	0.9	- 3.2	13.5	11.7	- 6.5	- 25.8	0.6
23 Rubber products	- 0.3	- 0.3	4.5	- 2.5	- 3.0	8.0	- 17.8	18.2	x	x	x	x
24 Leather tanning, leather products and fur skins	- 7.4	- 6.4	- 6.9	- 10.0	4.0	- 8.1	2.3	0.1	- 2.1	-	- 43.1	- 12.1
25 Ceramic, stone and clay products	0.5	0.6	- 3.2	- 1.6	- 0.7	- 2.1	3.6	10.9	3.9	- 0.8	- 2.0	- 6.6
26 Iron and steel	5.3	5.4	- 0.8	1.0	3.4	6.4	- 2.9	11.0	7.5	5.9	- 2.4	- 4.4
27 Non-ferrous metals and products	6.9	6.9	6.0	3.6	7.2	4.1	- 5.2	27.8	x	x	x	x
28 Fabricated metal products	- 0.6	- 0.7	2.1	- 1.2	2.9	1.6	- 3.0	4.4	- 5.8	- 2.1	- 9.9	5.6
29 General machinery	7.6	7.5	6.7	4.5	3.4	5.7	4.3	14.8	13.2	6.9	2.1	15.3
30 Electrical machinery, equipment and supplies	8.3	8.3	4.8	2.8	4.4	8.4	2.0	16.4	5.1	9.5	- 2.2	2.2
31 Transportation equipment	1.1	1.1	1.6	0.2	3.6	5.0	- 19.2	19.4	1.9	0.5	- 12.9	3.9
32 Precision instruments and machinery	- 2.4	- 2.4	5.2	5.1	- 7.5	- 14.0	- 0.7	11.8	- 1.7	- 9.9	31.0	- 1.9
34 Miscellaneous manufacturing products	- 2.1	- 2.1	- 4.0	- 3.9	- 7.0	- 1.9	- 11.7	5.4	- 3.1	1.4	6.1	- 2.0

Table 9: Value of shipment by industry, legal status and size of capital (Continuity)

(iii) Composition ratio by industry

(Unit: %)

Industry	Total	Total corporations	Associations and others	Individual enterprises
Total	100.0	100.0	100.0	100.0
12 Food	8.0	7.7	44.4	16.9
13 Beverages, tobacco and feed	3.6	3.6	15.2	1.8
14 Textile mill products	1.0	1.0	1.7	4.2
15 Apparel and other finished products made from fabrics and similar materials	1.2	1.1	1.0	8.2
16 Lumber and wood products	1.1	1.0	4.8	6.3
17 Furniture and fixtures	0.9	0.9	0.6	5.9
18 Pulp, paper and paper products	2.6	2.7	0.9	2.1
19 Publishing, printing and allied products	4.3	4.2	10.9	4.8
20 Chemical and allied products	7.9	7.9	10.9	0.2
21 Petroleum and coal products	3.1	3.2	1.9	0.1
22 Plastic products	3.5	3.5	0.4	5.8
23 Rubber products	1.0	1.0	x	x
24 Leather tanning, leather products and fur skins	0.2	0.2	0.1	4.1
25 Ceramic, stone and clay products	2.9	2.9	3.1	3.6
26 Iron and steel	4.0	4.0	0.4	1.0
27 Non-ferrous metals and products	2.1	2.1	x	x
28 Fabricated metal products	5.0	5.0	0.9	11.4
29 General machinery	10.1	10.2	0.6	7.0
30 Electrical machinery, equipment and supplies	19.8	20.0	0.1	4.6
31 Transportation equipment	14.8	14.9	0.3	2.9
32 Precision instruments and machinery	1.4	1.4	0.6	1.0
34 Miscellaneous manufacturing products	1.6	1.5	0.8	4.4

(iv) Composition ratio by organization

(Unit: %)

Industry	Total	Total corporations	Associations and others	Individual enterprises
Total	100.0	98.7	0.5	0.7
12 Food	100.0	95.4	3.1	1.5
13 Beverages, tobacco and feed	100.0	97.4	2.3	0.4
14 Textile mill products	100.0	96.0	0.9	3.1
15 Apparel and other finished products made from fabrics and similar materials	100.0	94.4	0.5	5.1
16 Lumber and wood products	100.0	93.2	2.5	4.3
17 Furniture and fixtures	100.0	94.9	0.4	4.7
18 Pulp, paper and paper products	100.0	99.2	0.2	0.6
19 Publishing, printing and allied products	100.0	97.8	1.4	0.8
20 Chemical and allied products	100.0	99.2	0.8	0.0
21 Petroleum and coal products	100.0	99.6	0.3	0.0
22 Plastic products	100.0	98.7	0.1	1.2
23 Rubber products	100.0	98.0	x	x
24 Leather tanning, leather products and fur skins	100.0	86.5	0.3	13.2
25 Ceramic, stone and clay products	100.0	98.5	0.6	0.9
26 Iron and steel	100.0	99.8	0.1	0.2
27 Non-ferrous metals and products	100.0	99.7	x	x
28 Fabricated metal products	100.0	98.3	0.1	1.6
29 General machinery	100.0	99.5	0.0	0.5
30 Electrical machinery, equipment and supplies	100.0	99.8	0.0	0.2
31 Transportation equipment	100.0	99.8	0.0	0.1
32 Precision instruments and machinery	100.0	99.2	0.2	0.5
34 Miscellaneous manufacturing products	100.0	97.7	0.3	2.0

(v) Composition ratio of corporations by size of capital

Industry	Total corporations	Less than 10 million yen	More than 10 million yen less than 30 million yen	More than 30 million yen less than 50 million yen	More than 50 million yen less than 100 million yen	More than 100 million yen less than 300 million yen	More than 300 million yen less than 1 billion yen	More than 1 billion yen less than 10 billion yen	More than 10 billion yen
Total	100.0	2.7	13.4	5.8	7.5	6.2	8.7	14.6	41.0
12 Food	100.0	4.8	22.6	10.7	13.3	10.6	10.0	13.1	15.0
13 Beverages, tobacco and feed	100.0	1.3	7.0	2.3	4.8	3.1	7.1	12.9	61.5
14 Textile mill products	100.0	5.4	30.8	12.7	14.7	10.3	7.5	10.7	7.8
15 Apparel and other finished products made from fabrics and similar materials	100.0	11.2	48.9	15.8	12.0	5.1	2.2	3.4	1.5
16 Lumber and wood products	100.0	11.2	37.6	13.1	11.3	9.0	6.4	8.5	2.9
17 Furniture and fixtures	100.0	13.6	32.7	12.2	9.7	4.9	7.0	10.7	9.1
18 Pulp, paper and paper products	100.0	2.3	17.8	8.3	8.3	7.4	7.6	13.9	34.5
19 Publishing, printing and allied products	100.0	4.6	26.3	8.8	10.3	14.3	17.2	7.4	11.1
20 Chemical and allied products	100.0	0.1	3.4	2.4	4.9	5.9	6.7	21.5	55.1
21 Petroleum and coal products	100.0	0.0	0.7	0.6	0.9	0.8	3.5	22.1	71.3
22 Plastic products	100.0	4.9	23.0	9.9	11.6	9.8	12.2	14.3	14.2
23 Rubber products	100.0	3.1	14.8	5.9	7.1	6.3	10.4	15.0	37.4
24 Leather tanning, leather products and fur skins	100.0	12.0	50.7	14.9	10.6	4.8	3.4	3.7	-
25 Ceramic, stone and clay products	100.0	4.1	24.2	10.6	10.7	7.0	8.4	13.6	21.5
26 Iron and steel	100.0	0.8	7.3	5.4	7.0	5.6	6.9	11.9	55.2
27 Non-ferrous metals and products	100.0	1.1	8.2	4.4	6.9	6.3	11.1	15.9	45.9
28 Fabricated metal products	100.0	7.8	29.3	11.0	10.5	5.5	7.0	12.5	16.3
29 General machinery	100.0	3.3	16.4	6.5	8.9	5.4	6.6	17.0	35.9
30 Electrical machinery, equipment and supplies	100.0	1.0	7.2	3.6	6.6	6.1	11.7	14.5	49.4
31 Transportation equipment	100.0	0.9	4.6	2.3	3.7	3.0	5.8	14.2	65.6
32 Precision instruments and machinery	100.0	3.5	14.8	7.5	10.0	10.8	14.7	17.8	20.9
34 Miscellaneous manufacturing products	100.0	7.1	23.0	6.2	7.9	7.1	13.9	11.8	23.0

4. Situation by prefecture

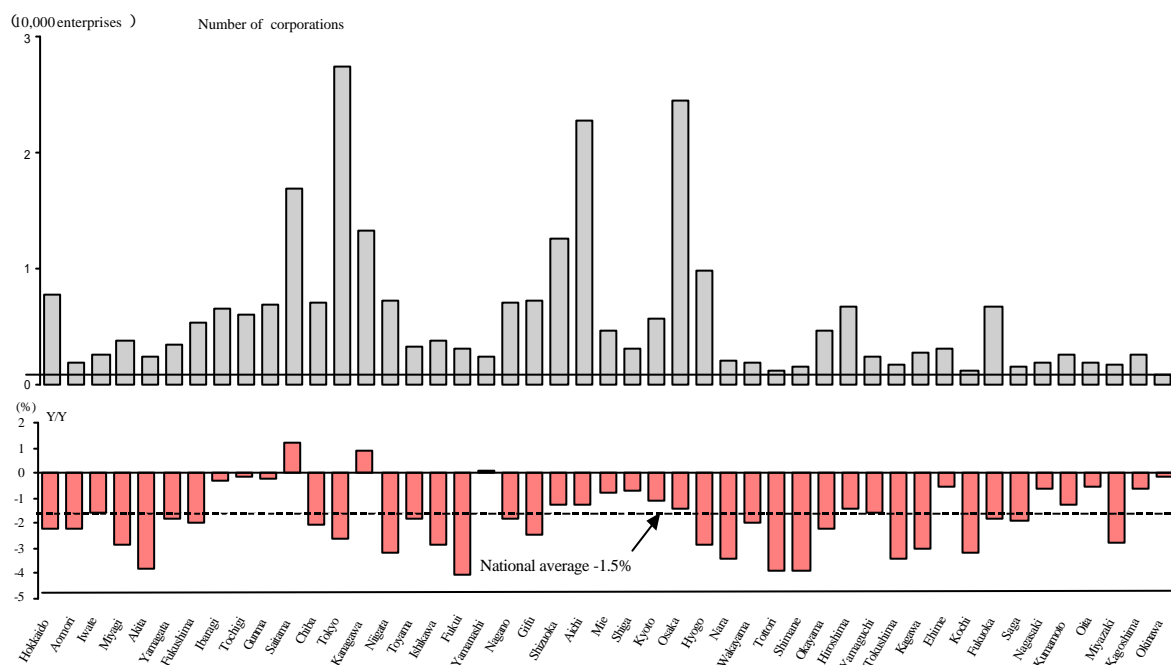
(1) Number of establishments

When viewing the number of establishments by legal status (Figure 12):

- (i) The number of corporations was highest in Tokyo (27,363), followed by Osaka (24,550), Aichi (22,812), Saitama (16,994), Kanagawa (13,261) and Shizuoka (12,639) in order.

When observing this by prefecture, the number of corporations was large: <Tokyo> publishing, printing and allied industries, fabricated metal products and general machinery; <Osaka> fabricated metal products and general machinery; <Aichi> general machinery and fabricated metal products; <Saitama> metal products and general machinery; <Kanagawa> general machinery, fabricated metal products and electrical machinery, equipment and supplies. In addition, the relatively large number of corporate establishment in the industries of fabricated metal products, general machinery and food were observed in all prefectures.

Figure 12: Number of corporations by prefecture



- (ii) When viewing the number of establishments of associations and others (Figure 13) was largest in Kyoto (246 establishments), Hokkaido (214), followed by Shizuoka (180), Gifu (123) and Kagoshima (105).

By prefecture, the number of establishments of associations and others was large in <Kyoto> textile mill products, ceramics, stone and clay products, food and publishing, printing and allied industries; <Hokkaido> food, beverages, tobacco and feed, and lumber and wood products; <Shizuoka> beverages, tobacco and feed, food, and lumber and wood products; <Gifu> food, lumber and wood products, beverages, tobacco and feed, ceramic stone and clay products; <Kagoshima> food, and beverages, tobacco and feed. Furthermore, the ratio of food industry was relatively high in all prefectures.

Figure 1 consists of two bar charts sharing a common x-axis representing Japanese prefectures. The top chart, titled 'Number of associations and others', shows the count of associations for each prefecture, with a y-axis ranging from 0 to 300. The bottom chart, titled 'Y/Y' (Year-to-Year change), shows the percentage change in the number of associations for each prefecture, with a y-axis ranging from -15% to 15%. A horizontal dashed line at -1.9% represents the national average. An arrow points to the Kyushu region in the bottom chart.

Prefecture	Number of associations and others	Y/Y (%)
Hokkaido	215	-1.0
Aomori	65	-2.0
Iwate	95	-1.0
Myagi	60	-3.0
Akita	60	3.0
Iwagawa	65	-2.0
Fukushima	60	-4.0
Ibaragi	40	-4.0
Tochigi	35	-4.0
Gunma	35	-7.0
Saitama	30	-7.0
Chiba	40	-8.0
Tokyo	90	-7.0
Kanagawa	40	-7.0
Nagano	75	-1.0
Tohama	40	-11.0
Ishikawa	40	-11.0
Fukui	60	-4.0
Yamanashi	20	7.0
Nagano	100	-3.0
Gifu	125	9.0
Shizuoka	185	-2.0
Aichi	85	5.0
Mie	35	4.0
Shiga	35	-8.0
Kyoto	245	-13.0
Osaka	40	-13.0
Hyogo	75	3.0
Nara	20	-6.0
Wakayama	45	-7.0
Tokushima	50	-7.0
Shimane	70	-1.0
Okuyama	40	-4.0
Hiroshima	60	-4.0
Tamagari	65	-4.0
Yamaguchi	40	-4.0
Yamaguchi	40	-4.0
Kagawa	65	-6.0
Ehime	65	-6.0
Kochi	65	-6.0
Fukuoka	90	5.0
Saga	45	-7.0
Nagasaki	65	-1.0
Fukuoka	105	10.0
Oita	65	2.0
Miyazaki	70	1.0
Kagoshima	35	-4.0

By prefecture, the number of establishments of individual enterprises was largest in <Osaka> fabricated metal product and apparel and other finished products; (Aichi) apparel and other finished products, metal products and textile mill products; <Hyogo> food, leather tanning, leather products and fur skins, and metal products; <Gifu> apparel and other finished products, and ceramic, stone and clay products; <Shizuoka> food and transportation equipment; <Tokyo> fabricated metal products, publishing, printing and allied industries, and apparel and other finished products; <Saitama> apparel and other finished products and fabricated metal products. Furthermore, the ratios of individual enterprises in the food, apparel and other finished products and fabricated metal products industries were relatively high in most prefectures.

Figure 1-4 consists of two bar charts sharing a common x-axis representing 47 Japanese prefectures, ordered by the number of individual enterprises in descending order.

The top chart, titled "Number of individual enterprises", shows the absolute count of establishments per prefecture. The y-axis ranges from 0 to 9,000. Osaka has the highest number of establishments at approximately 8,000, followed by Aichi at nearly 5,000. Other prefectures with significant counts include Tokyo, Chiba, and Kanagawa.

The bottom chart shows the year-over-year percentage change (Y/Y) in the number of establishments from 2010 to 2011. The y-axis ranges from -10% to 20%. A dashed horizontal line indicates the national average growth of 0.4%. Most prefectures show growth rates between -5% and 5%, with some outliers like Chiba showing a 10% increase and Osaka showing a 4% increase.

Prefecture	Number of individual enterprises (approx.)	Y/Y (%) (approx.)
Hokkaido	800	-2
Aomori	600	2
Iwate	500	3
Miyagi	600	-8
Akita	600	-1
Ibaraki	700	0
Yamagata	700	-1
Fukushima	1,000	4
Tochigi	1,800	4
Guma	1,200	3
Saitama	1,500	1
Chiba	2,300	10
Tokyo	2,700	-2
Kanagawa	2,700	16
Niigata	1,500	-8
Tohoku	1,000	-1
Ishikawa	1,200	-7
Fukui	800	-8
Yamanashi	700	-1
Nagano	1,100	-2
Gifu	2,700	-8
Shizuoka	3,000	3
Aichi	4,900	1
Mie	1,500	2
Shiga	1,000	5
Kyoto	1,800	2
Osaka	8,000	4
Hyogo	4,000	-1
Nara	1,600	-6
Wakayama	1,000	-6
Tottori	400	-5
Shimane	300	-2
Okuyama	800	-2
Hiroshima	900	4
Taniguchi	500	-1
Tokushima	400	-2
Kagawa	400	-1
Ehime	800	-4
Kochi	400	-1
Fukuoka	1,800	-7
Saga	500	-1
Nagasaki	1,000	-1
Gunma	600	0
Oita	400	1
Miyazaki	400	0
Kagoshima	600	6
Okinawa	600	3

(iv) When observing the number of establishments of each prefecture by legal status (Table 10), the ratio of corporations was high in Kanagawa, Tokyo, Hokkaido, Saitama, Hiroshima, Chiba and Tochigi, that of associations and others was high in Kochi, Shimane, Tottori, Miyazaki, Kyoto and Kagoshima, and that of individual enterprises was high in Okinawa, Nara, Wakayama, Nagasaki, Hyogo and Gifu.

Table 10: Number of establishments by legal status and prefecture

	Number of establishments				Year-by-year comparison				Composition ratio by prefecture (%)				Composition ratio by legal status (%)			
	Total	Corporations	Associations /others	Individual enterprises	Total	Corporations	Associations /others	Individual enterprise	Total	Corporations	Associations /others	Individual enterprises	Total	Corporations	Associations /others	Individual enterprises
National average	341,421	276,882	3,120	61,419	-1.2	-1.5	-1.9	0.4	100.0	100.0	100.0	100.0	100.0	81.1	0.9	18.0
1 Hokkaido	8,817	7,817	214	786	-2.2	-2.2	-2.3	-2.1	2.6	2.8	6.9	1.3	100.0	88.7	2.4	8.9
2 Aomori	2,406	1,840	62	504	-1.3	-2.2	-3.1	2.4	0.7	0.7	2.0	0.8	100.0	76.5	2.6	20.9
3 Iwate	3,305	2,543	91	671	-0.5	-1.6	-1.1	4.0	1.0	0.9	2.9	1.1	100.0	76.9	2.8	20.3
4 Miyagi	4,493	3,754	57	682	-3.7	-2.9	-3.4	-8.2	1.3	1.4	1.8	1.1	100.0	83.6	1.3	15.2
5 Akita	3,194	2,458	59	677	-3.3	-3.8	3.5	-2.0	0.9	0.9	1.9	1.1	100.0	77.0	1.8	21.2
6 Yamagata	4,124	3,365	61	698	-1.6	-1.8	-3.2	-0.7	1.2	1.2	2.0	1.1	100.0	81.6	1.5	16.9
7 Fukushima	6,335	5,344	57	934	-1.7	-2.0	-5.0	0.2	1.9	1.9	1.8	1.5	100.0	84.4	0.9	14.7
8 Ibaragi	8,302	6,555	40	1,707	0.6	-0.3	-4.8	4.1	2.4	2.4	1.3	2.8	100.0	79.0	0.5	20.6
9 Tochigi	7,067	6,051	31	985	0.4	-0.1	0.0	4.1	2.1	2.2	1.0	1.6	100.0	85.6	0.4	13.9
10 Gunma	8,154	6,860	38	1,256	0.4	-0.2	0.0	3.5	2.4	2.5	1.2	2.0	100.0	84.1	0.5	15.4
11 Saitama	19,223	16,994	27	2,202	2.2	1.2	-6.9	10.2	5.6	6.1	0.9	3.6	100.0	88.4	0.1	11.5
12 Chiba	8,210	7,098	33	1,079	-2.0	-2.1	0.0	-1.5	2.4	2.6	1.1	1.8	100.0	86.5	0.4	13.1
13 Tokyo	30,096	27,363	90	2,643	-2.2	-2.6	-7.2	1.9	8.8	9.9	2.9	4.3	100.0	90.9	0.3	8.8
14 Kanagawa	14,082	13,261	38	783	1.7	0.9	-7.3	16.7	4.1	4.8	1.2	1.3	100.0	94.2	0.3	5.6
15 Niigata	8,649	7,140	73	1,436	-4.1	-3.2	-1.4	-8.1	2.5	2.6	2.3	2.3	100.0	82.6	0.8	16.6
16 Toyama	4,198	3,295	36	867	-1.4	-1.8	0.0	0.5	1.2	1.2	1.2	1.4	100.0	78.5	0.9	20.7
17 Ishikawa	4,920	3,676	38	1,206	-4.2	-2.9	-11.6	-7.7	1.4	1.3	1.2	2.0	100.0	74.7	0.8	24.5
18 Fukui	3,849	3,002	59	788	-5.1	-4.1	-4.8	-8.6	1.1	1.1	1.9	1.3	100.0	78.0	1.5	20.5
19 Yamanashi	3,082	2,337	16	729	0.0	0.1	6.7	-0.4	0.9	0.8	0.5	1.2	100.0	75.8	0.5	23.7
20 Nagano	8,281	7,051	96	1,134	-2.0	-1.8	-4.0	-2.8	2.4	2.5	3.1	1.8	100.0	85.1	1.2	13.7
21 Gifu	10,057	7,273	123	2,661	-4.1	-2.5	0.0	-8.5	2.9	2.6	3.9	4.3	100.0	72.3	1.2	26.5
22 Shizuoka	15,736	12,639	180	2,917	-0.3	-1.3	9.1	3.6	4.6	4.6	5.8	4.7	100.0	80.3	1.1	18.5
23 Aichi	27,762	22,812	82	4,868	-0.7	-1.3	-3.5	2.2	8.1	8.2	2.6	7.9	100.0	82.2	0.3	17.5
24 Mie	6,121	4,578	65	1,478	0.0	-0.8	4.8	2.7	1.8	1.7	2.1	2.4	100.0	74.8	1.1	24.1
25 Shiga	3,985	3,056	30	899	0.7	-0.7	3.4	5.6	1.2	1.1	1.0	1.5	100.0	76.7	0.8	22.6
26 Kyoto	7,599	5,691	246	1,662	-0.5	-1.1	-8.9	3.0	2.2	2.1	7.9	2.7	100.0	74.9	3.2	21.9
27 Osaka	32,557	24,550	33	7,974	-0.1	-1.4	-13.2	4.2	9.5	8.9	1.1	13.0	100.0	75.4	0.1	24.5
28 Hyogo	13,947	9,840	74	4,033	-2.6	-2.9	2.8	-1.7	4.1	3.6	2.4	6.6	100.0	70.6	0.5	28.9
29 Nara	3,582	2,012	19	1,551	-4.5	-3.4	0.0	-5.8	1.0	0.7	0.6	2.5	100.0	56.2	0.5	43.3
30 Wakayama	3,012	1,942	44	1,026	-3.7	-2.0	-6.4	-6.7	0.9	0.7	1.4	1.7	100.0	64.5	1.5	34.1
31 Tottori	1,486	1,206	49	231	-4.3	-3.9	-7.5	-5.3	0.4	0.4	1.6	0.4	100.0	81.2	3.3	15.5
32 Shimane	2,063	1,589	70	404	-3.6	-3.9	-1.4	-2.4	0.6	0.6	2.2	0.7	100.0	77.0	3.4	19.6
33 Okayama	5,435	4,634	36	765	-2.3	-2.2	0.0	-2.5	1.6	1.7	1.2	1.2	100.0	85.3	0.7	14.1
34 Hiroshima	7,548	6,615	46	887	-0.7	-1.4	-4.2	5.0	2.2	2.4	1.5	1.4	100.0	87.6	0.6	11.8
35 Yamaguchi	2,842	2,300	59	483	-1.6	-1.6	-1.7	-1.4	0.8	0.8	1.9	0.8	100.0	80.9	2.1	17.0
36 Tokushima	2,290	1,781	64	445	-3.2	-3.4	-4.5	-2.2	0.7	0.6	2.1	0.7	100.0	77.8	2.8	19.4
37 Kagawa	3,124	2,660	33	431	-2.5	-3.0	6.5	0.0	0.9	1.0	1.1	0.7	100.0	85.1	1.1	13.8
38 Ehime	3,893	3,027	63	803	-0.5	-0.5	-6.0	0.0	1.1	1.1	2.0	1.3	100.0	77.8	1.6	20.6
39 Kochi	1,686	1,226	62	398	-3.3	-3.2	-3.1	-3.9	0.5	0.4	2.0	0.6	100.0	72.7	3.7	23.6
40 Fukuoka	8,638	6,773	88	1,777	-1.4	-1.8	4.8	-0.2	2.5	2.4	2.8	2.9	100.0	78.4	1.0	20.6
41 Saga	2,077	1,548	41	488	-3.0	-1.9	-6.8	-6.2	0.6	0.6	1.3	0.8	100.0	74.5	2.0	23.5
42 Nagasaki	2,853	1,850	58	945	-0.5	-0.6	0.0	-0.2	0.8	0.7	1.9	1.5	100.0	64.8	2.0	33.1
43 Kumamoto	3,118	2,531	71	516	-1.2	-1.3	-1.4	-0.6	0.9	0.9	2.3	0.8	100.0	81.2	2.3	16.5
44 Oita	2,341	1,902	61	378	0.1	-0.5	10.9	1.6	0.7	0.7	2.0	0.6	100.0	81.2	2.6	16.1
45 Miyazaki	2,132	1,647	70	415	-2.2	-2.8	0.0	-0.2	0.6	0.6	2.2	0.7	100.0	77.3	3.3	19.5
46 Kagoshima	3,246	2,577	105	564	0.7	-0.6	1.9	6.4	1.0	0.9	3.4	0.9	100.0	79.4	3.2	17.4
47 Okinawa	1,504	819	32	653	1.3	-0.1	-3.0	3.5	0.4	0.3	1.0	1.1	100.0	54.5	2.1	43.4

(2) Value of shipment

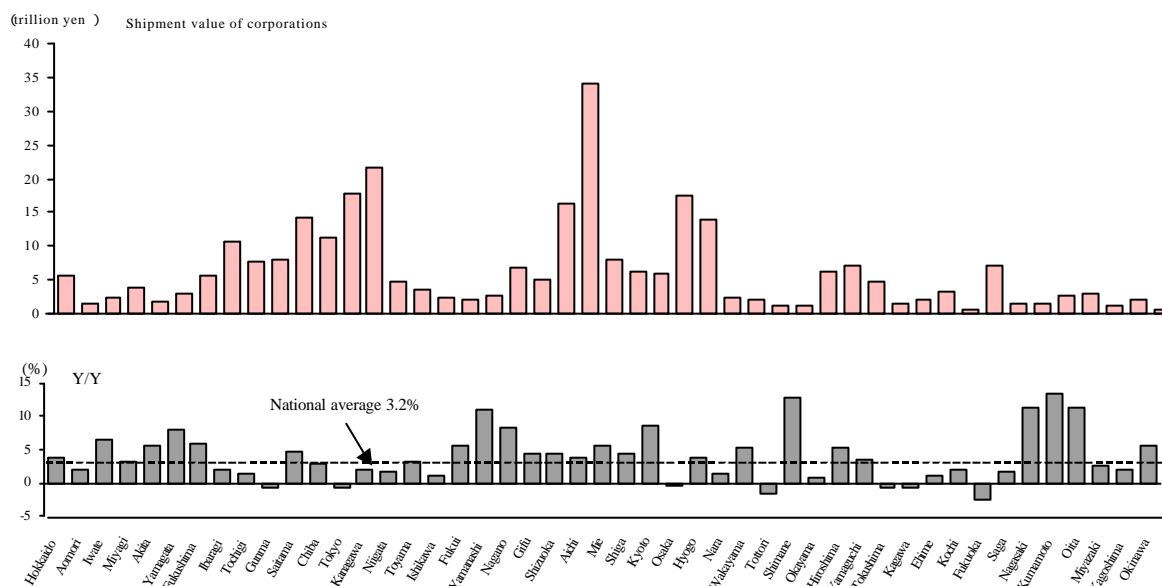
When viewing the value of shipment (Figure 15):

- (i) The value of shipment of corporations was high in Aichi (34.1249 trillion yen), Kanagawa (21.6552 trillion yen), Tokyo (17.7156 trillion yen), Osaka (17.6423 trillion yen) and Shizuoka (16.3843 trillion yen) in decreasing order.

Industries with high value of shipment of corporate establishments by prefecture: <Aichi> transportation equipment; <Kanagawa> electrical machinery, equipment and supplies, and transportation equipment; <Tokyo> publishing, printing and allied industries, and electrical machinery, equipment and supplies; <Osaka> electrical machinery, equipment and supplies, chemical and allied products, and general machinery; <Shizuoka> transportation equipment, and electrical machinery, equipment and supplies.

In addition, the value of shipment of corporations accounted for over 90% in all prefectures. (Table 11)

Figure 15: Value of shipment of corporations by prefecture



- (ii) Industries with high value of shipment of associations and others (Figure 16) were Tokyo (165.4 billion yen), Hokkaido (150.9 billion yen), Shizuoka (114.3 billion yen), Kumamoto (68.1 billion yen), Aichi (52.2 billion yen) and Kanagawa (50.3 billion yen) in decreasing order.

As for the industries with high value of shipment of establishments of associations and others by each prefecture, local industries (specialty products) had high scores: <Tokyo> that of the publishing, printing and allied products industry accounted for a little less than 80%; <Hokkaido> that of the food industry accounted for a little more than 70%; <Shizuoka> that of the beverages, tobacco and feed industry, and the food industry accounted for over 80%. Furthermore, the ratio of food industry in associations and others was high in all prefectures.

Figure 1 is a dual-axis chart titled "Shipment value of associations and others (100 million yen)". The top part is a bar chart showing shipment values for 47 prefectures. The y-axis is labeled "(100 million yen)" and ranges from 0 to 1800. The bottom part is a bar chart showing the year-over-year percentage change (Y/Y%) for the same prefectures. The y-axis is labeled "Y/Y (%)" and ranges from -50 to 30. A dashed horizontal line at -6.5% represents the national average. The x-axis lists the prefectures: Hokkaido, Aomori, Iwate, Miyagi, Akita, Yamagata, Ibaraki, Tochigi, Gunma, Saitama, Chiba, Tokyo, Kanagawa, Niigata, Toyama, Ishikawa, Fukui, Yamaguchi, Nagano, Gifu, Shizuoka, Aichi, Mie, Shiga, Kyoto, Osaka, Hyogo, Fukuoka, Saga, Nagasaki, Kumamoto, Oita, Miyazaki, Kagoshima, and Okinawa.

Prefecture	Shipment Value (100 million yen)	Y/Y (%)
Hokkaido	1500	-5
Aomori	150	-5
Iwate	250	-10
Miyagi	300	-10
Akita	100	0
Yamagata	100	-5
Ibaraki	250	-5
Tochigi	350	-15
Gunma	120	-45
Saitama	380	5
Chiba	320	-20
Tokyo	350	-5
Kanagawa	1650	-45
Niigata	500	-5
Toyama	200	-5
Ishikawa	100	-5
Fukui	120	-15
Yamaguchi	280	-15
Nagano	250	25
Gifu	250	15
Shizuoka	420	-5
Aichi	1150	-5
Mie	520	-5
Shiga	250	-25
Kyoto	150	-15
Osaka	250	-5
Hyogo	350	-35
Fukuoka	450	-5
Saga	50	5
Nagasaki	120	-15
Kumamoto	150	5
Oita	400	5
Miyazaki	120	5
Kagoshima	350	-5
Okinawa	180	-5

Regarding industries with high value of shipment of establishments of individual enterprises by prefecture, local industries (specialty products) showed a high ratio, as in the case with associations and others: <Osaka> fabricated metal products and general machinery; <Hyogo> leather tanning, leather products and fur skins, rubber products and food <Aichi> fabricated metal products, food and general machinery; <Shizuoka> food, and beverages, tobacco and feed; <Nara> lumber and wood products, and apparel and other finished products; <Gifu> ceramic, stone and clay products, and apparel and other finished products; <Tokyo> fabricated metal products, leather tanning, leather products and fur skins, and publishing, printing and allied industries; <Fukuoka> furniture and fixtures, food, and lumber and wood products; <Kyoto> textile mill products.

(100 million yen)

Shipment value of individual enterprises

(%) Y/Y

National average -3.1%

Prefecture	Shipment Value (100 million yen)	% Y/Y
Hokkaido	300	-8
Aomori	150	-2
Iwate	200	0
Miyagi	200	-7
Aki	200	-6
Kanagawa	200	-2
Chiba	200	-2
Tokyo	500	5
Kanto	750	-2
Tochigi	200	1
Gunma	350	-1
Saitama	550	-1
Chubu	350	-2
Tokai	750	-2
Kansai	200	16
Osaka	350	-10
Hyogo	3400	-1
Nara	1900	-7
Ishikawa	750	-13
Fukui	500	-8
Shiga	200	-8
Yamanashi	200	-1
Nagano	350	-1
Gifu	800	-1
Shizuoka	1100	1
Aichi	1550	-1
Mie	550	-5
Shiga	250	0
Kyoto	650	2
Osaka	3400	-1
Hyogo	1900	-7
Nara	750	-13
Ishikawa	500	-8
Fukui	200	-8
Shiga	100	-8
Yamanashi	100	-2
Nagano	150	-20
Gifu	200	-2
Shizuoka	250	-2
Aichi	250	2
Mie	200	-2
Shiga	200	-2
Kyoto	200	2
Osaka	200	-10
Hyogo	200	-10
Nara	200	-10
Ishikawa	200	-10
Fukui	200	-10
Shiga	200	-10
Yamanashi	200	-10
Nagano	200	-10
Gifu	200	-10
Shizuoka	200	-10
Aichi	200	-10
Mie	200	-10
Shiga	200	-10
Kyoto	200	-10
Osaka	200	-10
Hyogo	200	-10
Nara	200	-10
Ishikawa	200	-10
Fukui	200	-10
Shiga	200	-10
Yamanashi	200	-10
Nagano	200	-10
Gifu	200	-10
Shizuoka	200	-10
Aichi	200	-10
Mie	200	-10
Shiga	200	-10
Kyoto	200	-10
Osaka	200	-10
Hyogo	200	-10
Nara	200	-10
Ishikawa	200	-10
Fukui	200	-10
Shiga	200	-10
Yamanashi	200	-10
Nagano	200	-10
Gifu	200	-10
Shizuoka	200	-10
Aichi	200	-10
Mie	200	-10
Shiga	200	-10
Kyoto	200	-10
Osaka	200	-10
Hyogo	200	-10
Nara	200	-10
Ishikawa	200	-10
Fukui	200	-10
Shiga	200	-10
Yamanashi	200	-10
Nagano	200	-10
Gifu	200	-10
Shizuoka	200	-10
Aichi	200	-10
Mie	200	-10
Shiga	200	-10
Kyoto	200	-10
Osaka	200	-10
Hyogo	200	-10
Nara	200	-10
Ishikawa	200	-10
Fukui	200	-10
Shiga	200	-10
Yamanashi	200	-10
Nagano	200	-10
Gifu	200	-10
Shizuoka	200	-10
Aichi	200	-10
Mie	200	-10
Shiga	200	-10
Kyoto	200	-10
Osaka	200	-10
Hyogo	200	-10
Nara	200	-10
Ishikawa	200	-10
Fukui	200	-10
Shiga	200	-10
Yamanashi	200	-10
Nagano	200	-10
Gifu	200	-10
Shizuoka	200	-10
Aichi	200	-10
Mie	200	-10
Shiga	200	-10
Kyoto	200	-10
Osaka	200	-10
Hyogo	200	-10
Nara	200	-10
Ishikawa	200	-10
Fukui	200	-10
Shiga	200	-10
Yamanashi	200	-10
Nagano	200	-10
Gifu	200	-10
Shizuoka	200	-10
Aichi	200	-10
Mie	200	-10
Shiga	200	-10
Kyoto	200	-10
Osaka	200	-10
Hyogo	200	-10
Nara	200	-10
Ishikawa	200	-10
Fukui	200	-10

Table 11: Value of shipment by legal status and prefecture

	Value of shipment (million yen)				Year-by-year comparison (%)			
	Total	Corporations	Associations/ others	Individual enterprises	Total	Corporations	Associations/ others	Individual enterprises
National total	300,477,604	296,665,371	1,641,850	2,170,383	3.1	3.2	- 6.5	- 3.1
1 Hokkaido	5,917,173	5,730,115	150,881	36,177	3.6	3.9	- 4.2	- 8.3
2 Aomori	1,374,170	1,342,103	16,125	15,942	1.9	2.1	- 1.8	- 3.3
3 Iwate	2,453,958	2,405,657	27,201	21,100	6.4	6.6	- 0.6	0.5
4 Miyagi	3,865,118	3,809,371	32,477	23,270	3.1	3.3	- 9.6	- 6.5
5 Akita	1,707,029	1,677,467	11,115	18,448	5.4	5.5	0.8	- 5.2
6 Yamagata	2,964,891	2,931,396	11,913	21,581	8.0	8.1	- 3.1	- 2.5
7 Fukushima	5,708,716	5,659,418	25,994	23,303	5.9	6.0	- 3.1	- 0.4
8 Ibaragi	10,735,973	10,646,911	34,189	54,873	2.0	2.1	- 12.3	- 0.9
9 Tochigi	7,664,629	7,628,102	13,535	22,993	1.1	1.3	- 42.3	0.9
10 Gunma	8,024,947	7,953,181	37,621	34,145	- 0.5	- 0.6	7.1	- 0.8
11 Saitama	14,474,033	14,380,696	32,644	60,693	4.8	4.9	- 22.1	6.1
12 Chiba	11,457,331	11,386,430	34,398	36,504	3.1	3.1	- 8.9	- 2.7
13 Tokyo	17,959,034	17,715,591	165,410	78,032	- 0.8	- 0.8	- 0.7	- 0.3
14 Kanagawa	21,727,608	21,655,213	50,295	22,100	1.9	2.0	- 30.4	16.3
15 Niigata	4,671,167	4,608,157	21,250	41,760	1.7	1.8	- 6.5	- 9.1
16 Toyama	3,458,884	3,416,008	10,460	32,415	3.2	3.2	0.1	- 2.2
17 Ishikawa	2,497,580	2,446,749	10,826	40,006	0.9	1.0	- 0.8	- 6.4
18 Fukui	1,974,347	1,934,740	13,640	25,967	5.2	5.5	- 15.7	- 5.3
19 Yamanashi	2,630,077	2,575,678	28,597	25,803	10.9	10.9	25.0	0.4
20 Nagano	7,016,823	6,958,035	25,302	33,486	8.3	8.4	0.6	- 1.1
21 Gifu	5,085,773	4,964,051	41,980	79,742	4.4	4.6	15.4	- 7.0
22 Shizuoka	16,610,776	16,384,335	114,282	112,158	4.4	4.5	- 6.9	1.2
23 Aichi	34,336,112	34,124,898	52,182	159,032	3.9	3.9	- 6.0	- 0.9
24 Mie	8,093,683	8,010,598	26,098	56,988	5.5	5.7	- 23.0	- 4.1
25 Shiga	6,396,402	6,354,259	13,453	28,690	4.4	4.4	- 13.7	0.7
26 Kyoto	5,885,790	5,794,769	26,453	64,568	8.5	8.7	- 6.5	2.1
27 Osaka	18,019,711	17,642,266	33,348	344,098	- 0.6	- 0.4	- 33.3	- 1.9
28 Hyogo	14,069,990	13,835,647	43,024	191,319	3.6	3.8	- 7.9	- 5.7
29 Nara	2,418,298	2,332,428	6,799	79,071	1.0	1.5	6.8	- 12.0
30 Wakayama	2,265,357	2,200,035	12,223	53,099	4.9	5.4	- 15.8	- 6.9
31 Tottori	1,200,276	1,154,189	39,437	6,650	- 1.6	- 1.5	- 3.3	- 5.7
32 Shimane	1,226,257	1,197,049	15,645	13,563	12.2	12.7	- 4.5	- 3.5
33 Okayama	6,369,501	6,327,375	22,115	20,010	0.6	0.7	2.6	- 20.3
34 Hiroshima	7,217,674	7,158,249	30,480	28,945	5.1	5.2	- 4.7	- 7.7
35 Yamaguchi	4,838,040	4,780,303	42,212	15,525	3.5	3.7	- 7.3	- 11.2
36 Tokushima	1,505,213	1,457,272	35,974	11,967	- 0.7	- 0.8	0.9	- 4.2
37 Kagawa	2,145,909	2,115,887	18,867	11,155	- 0.5	- 0.6	5.7	2.8
38 Ehime	3,467,093	3,412,413	33,232	21,449	0.9	1.2	- 15.6	- 8.9
39 Kochi	641,725	614,327	13,288	14,110	1.8	1.9	5.2	- 4.9
40 Fukuoka	7,367,880	7,257,366	42,289	68,225	- 2.4	- 2.4	2.6	- 1.2
41 Saga	1,610,911	1,559,724	34,554	16,632	1.5	1.7	- 2.8	- 7.5
42 Nagasaki	1,537,118	1,486,407	25,067	25,643	10.6	11.2	- 5.8	- 2.3
43 Kumamoto	2,816,965	2,731,431	68,136	17,398	13.1	13.5	2.7	- 1.7
44 Oita	3,087,459	3,058,270	18,609	10,580	11.2	11.4	- 2.9	- 6.2
45 Miyazaki	1,319,192	1,292,124	15,197	11,871	2.6	2.7	0.2	- 6.3
46 Kagoshima	2,014,546	1,954,310	44,821	15,415	1.7	2.0	- 8.6	3.5
47 Okinawa	646,466	604,372	18,213	23,881	5.1	5.5	- 3.9	1.4

Table 11: Value of shipment by legal status and prefecture (Continuity)

	Composition ratio by prefecture (%)				Composition ratio by legal status (%)			
	Total	Corporations	Associations /others	Individual enterprises	Total	Corporations	Associations /others	Individual enterprises
National average	100.0	100.0	100.0	100.0	100.0	98.7	0.5	0.7
1 Hokkaido	2.0	1.9	9.2	1.7	100.0	96.8	2.5	0.6
2 Aomori	0.5	0.5	1.0	0.7	100.0	97.7	1.2	1.2
3 Iwate	0.8	0.8	1.7	1.0	100.0	98.0	1.1	0.9
4 Miyagi	1.3	1.3	2.0	1.1	100.0	98.6	0.8	0.6
5 Akita	0.6	0.6	0.7	0.8	100.0	98.3	0.7	1.1
6 Yamagata	1.0	1.0	0.7	1.0	100.0	98.9	0.4	0.7
7 Fukushima	1.9	1.9	1.6	1.1	100.0	99.1	0.5	0.4
8 Ibaragi	3.6	3.6	2.1	2.5	100.0	99.2	0.3	0.5
9 Tochigi	2.6	2.6	0.8	1.1	100.0	99.5	0.2	0.3
10 Gunma	2.7	2.7	2.3	1.6	100.0	99.1	0.5	0.4
11 Saitama	4.8	4.8	2.0	2.8	100.0	99.4	0.2	0.4
12 Chiba	3.8	3.8	2.1	1.7	100.0	99.4	0.3	0.3
13 Tokyo	6.0	6.0	10.1	3.6	100.0	98.6	0.9	0.4
14 Kanagawa	7.2	7.3	3.1	1.0	100.0	99.7	0.2	0.1
15 Niigata	1.6	1.6	1.3	1.9	100.0	98.7	0.5	0.9
16 Toyama	1.2	1.2	0.6	1.5	100.0	98.8	0.3	0.9
17 Ishikawa	0.8	0.8	0.7	1.8	100.0	98.0	0.4	1.6
18 Fukui	0.7	0.7	0.8	1.2	100.0	98.0	0.7	1.3
19 Yamanashi	0.9	0.9	1.7	1.2	100.0	97.9	1.1	1.0
20 Nagano	2.3	2.3	1.5	1.5	100.0	99.2	0.4	0.5
21 Gifu	1.7	1.7	2.6	3.7	100.0	97.6	0.8	1.6
22 Shizuoka	5.5	5.5	7.0	5.2	100.0	98.6	0.7	0.7
23 Aichi	11.4	11.5	3.2	7.3	100.0	99.4	0.2	0.5
24 Mie	2.7	2.7	1.6	2.6	100.0	99.0	0.3	0.7
25 Shiga	2.1	2.1	0.8	1.3	100.0	99.3	0.2	0.4
26 Kyoto	2.0	2.0	1.6	3.0	100.0	98.5	0.4	1.1
27 Osaka	6.0	5.9	2.0	15.9	100.0	97.9	0.2	1.9
28 Hyogo	4.7	4.7	2.6	8.8	100.0	98.3	0.3	1.4
29 Nara	0.8	0.8	0.4	3.6	100.0	96.4	0.3	3.3
30 Wakayama	0.8	0.7	0.7	2.4	100.0	97.1	0.5	2.3
31 Tottori	0.4	0.4	2.4	0.3	100.0	96.2	3.3	0.6
32 Shimane	0.4	0.4	1.0	0.6	100.0	97.6	1.3	1.1
33 Okayama	2.1	2.1	1.3	0.9	100.0	99.3	0.3	0.3
34 Hiroshima	2.4	2.4	1.9	1.3	100.0	99.2	0.4	0.4
35 Yamaguchi	1.6	1.6	2.6	0.7	100.0	98.8	0.9	0.3
36 Tokushima	0.5	0.5	2.2	0.6	100.0	96.8	2.4	0.8
37 Kagawa	0.7	0.7	1.1	0.5	100.0	98.6	0.9	0.5
38 Ehime	1.2	1.2	2.0	1.0	100.0	98.4	1.0	0.6
39 Kochi	0.2	0.2	0.8	0.7	100.0	95.7	2.1	2.2
40 Fukuoka	2.5	2.4	2.6	3.1	100.0	98.5	0.6	0.9
41 Saga	0.5	0.5	2.1	0.8	100.0	96.8	2.1	1.0
42 Nagasaki	0.5	0.5	1.5	1.2	100.0	96.7	1.6	1.7
43 Kumamoto	0.9	0.9	4.1	0.8	100.0	97.0	2.4	0.6
44 Oita	1.0	1.0	1.1	0.5	100.0	99.1	0.6	0.3
45 Miyazaki	0.4	0.4	0.9	0.5	100.0	97.9	1.2	0.9
46 Kagoshima	0.7	0.7	2.7	0.7	100.0	97.0	2.2	0.8
47 Okinawa	0.2	0.2	1.1	1.1	100.0	93.5	2.8	3.7

“Value added per employee” by enterprise

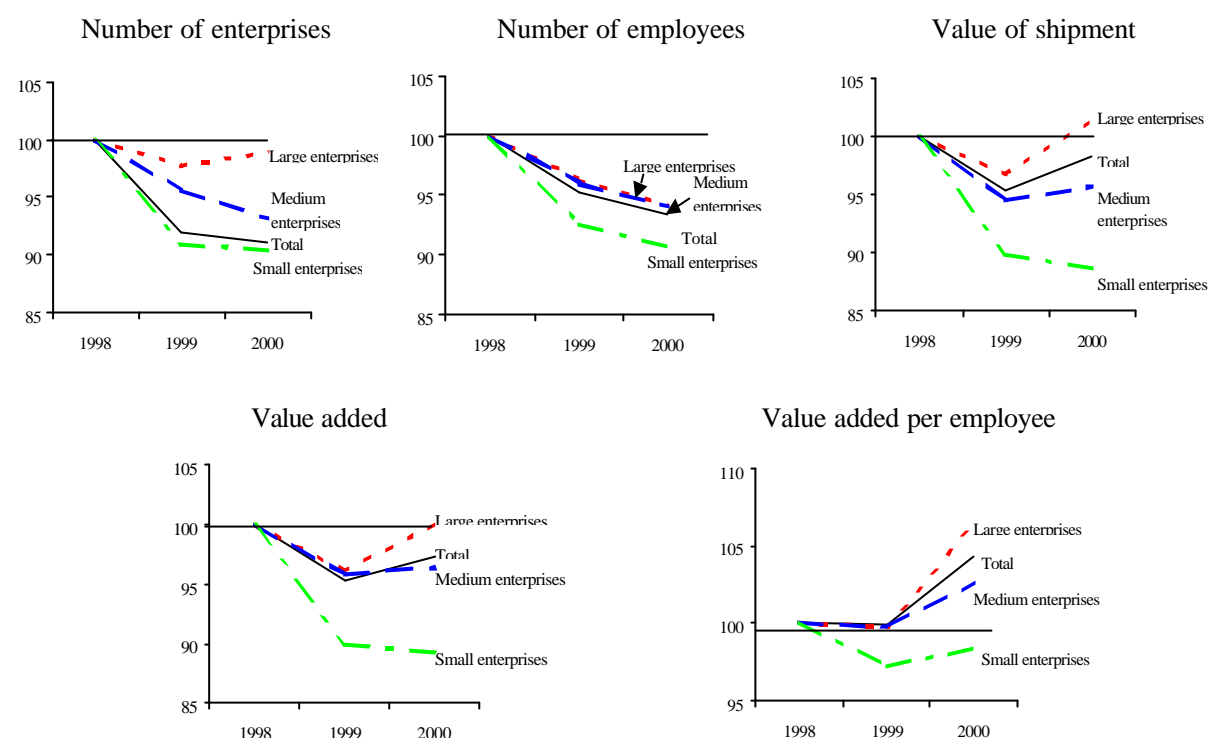
This section covers the present conditions of “value added per employee” by classifying manufacturing establishments into large, medium and small-sized enterprises.

1. Situation on major survey items

The number of enterprises in 2000 was 312,341, indicating a slight decreasing trend. By enterprise scale (Note), despite a continued decrease in the number of small and medium enterprises, the number of large enterprises increased. In addition, the number of employees was 9,183,833, a decrease in all categories. (Figure I)

Despite an increase of 300.4776 trillion yen in value of shipment and 110.2426 trillion yen for value added, the value decreased in small enterprises and increased for large and medium enterprises. Furthermore, the “value added per employee” increased for large, medium and small enterprises due to a decrease in the number of employees but increased sharply compared to other items (Figure I).

Figure I: Major items (1998 = 100)



(Note: Ranking of enterprise scale)

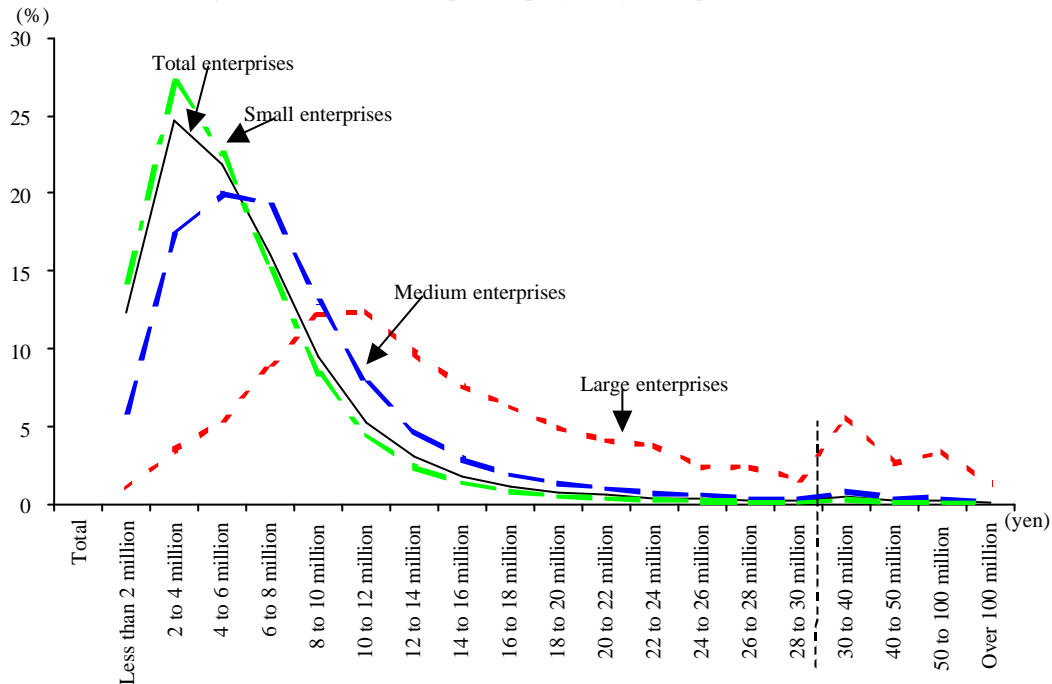
	<<Corporations>>	<<Associations and others, individual enterprises>>
300 persons	(2)	(1)
20 persons	(2)	(2)
300 million yen	(3)	(3)
Capital amount		

Large enterprises	(1) Corporations	Enterprises with 300 or more employees capitalized over 300 million yen
	(4) Associations and others, individual enterprises	Enterprises with 300 or more employees
Medium enterprises	(2) Corporations	Enterprises with over 20 and less than 300 employees capitalized less than 300 million yen
	(5) Associations and others, individual enterprises	Enterprises with over 20 and less than 300 employees
Small enterprises	(3) Corporations	Enterprises with less than 20 employees
	(6) Associations and others, individual enterprises	Enterprises with less than 20 employees

The above-mentioned enterprises are classified in accordance with the Small and Medium Enterprise Basic Law. Despite the enterprise ranking indicated above, given that the report by enterprise of Census of Manufacture is a compilation of statistical tables for enterprises with 4 or

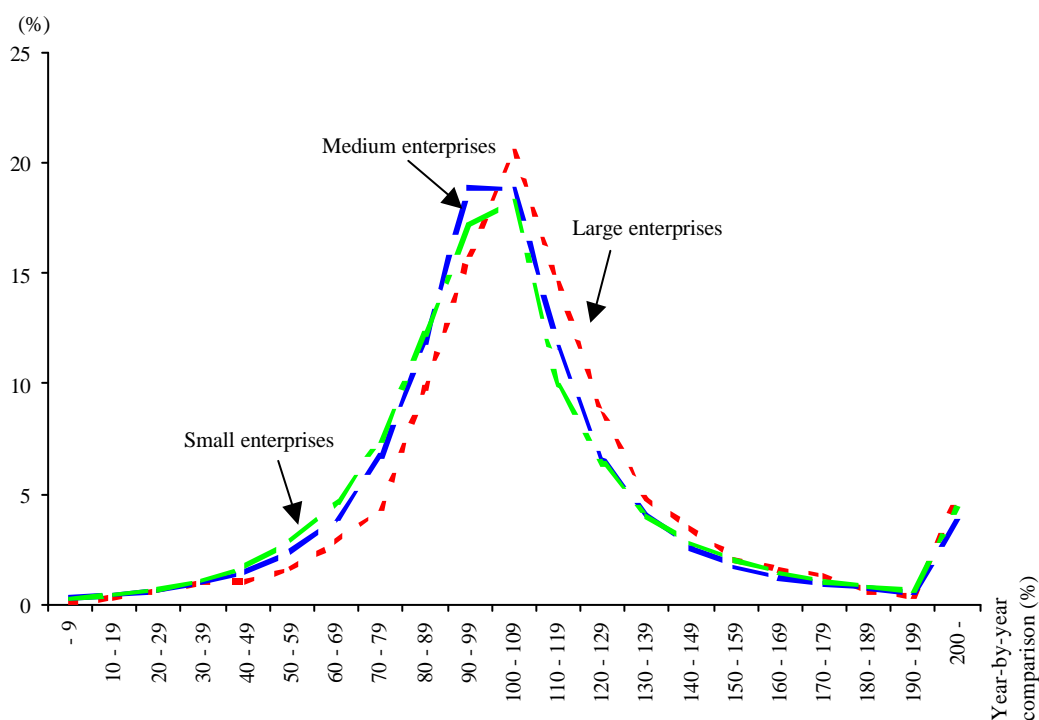
Viewing the distribution of “value added per employee” by enterprise scale in 2000, the enterprise scale for all leaned leftward. However, large enterprises peaked for the 10 to 20 million yen group, medium enterprises peaked for the 4 to 6 million yen group, and small enterprises peaked for the 2 to 4 million yen group. Consequently, the center of distribution leaned further rightward as enterprise scale increased and borderline expanded (Figure II).

Figure II: Value added per employee by enterprise scale



In addition, when viewing the distribution of “value added per employee” in 2000 compared to the previous year, as the enterprise scale increased, establishments which grew compared to the previous year increased (Figure III).

Figure III: Distribution of added-value per employee by enterprise scale compared to the previous year



2. Large enterprises

Although the distribution of “value added per employee” was similar with that of 1998, 1999 and 2000 in a year-by-year comparison, it tended to improve due to a rightward shift (Figures IV and V).

Figure IV: Distribution of value added per employee (1998 to 2000)

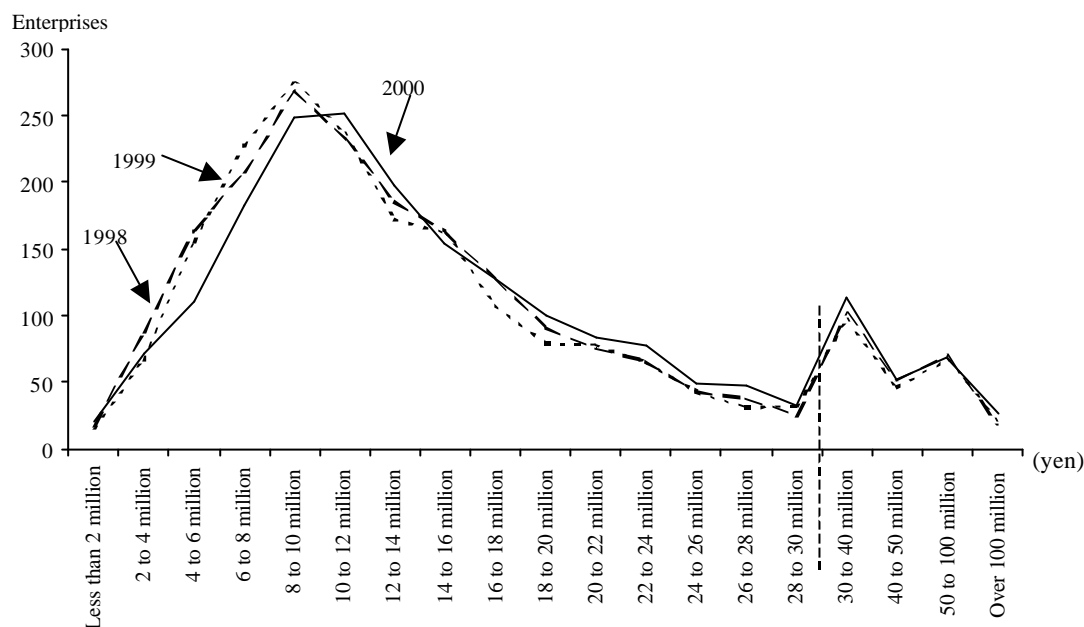
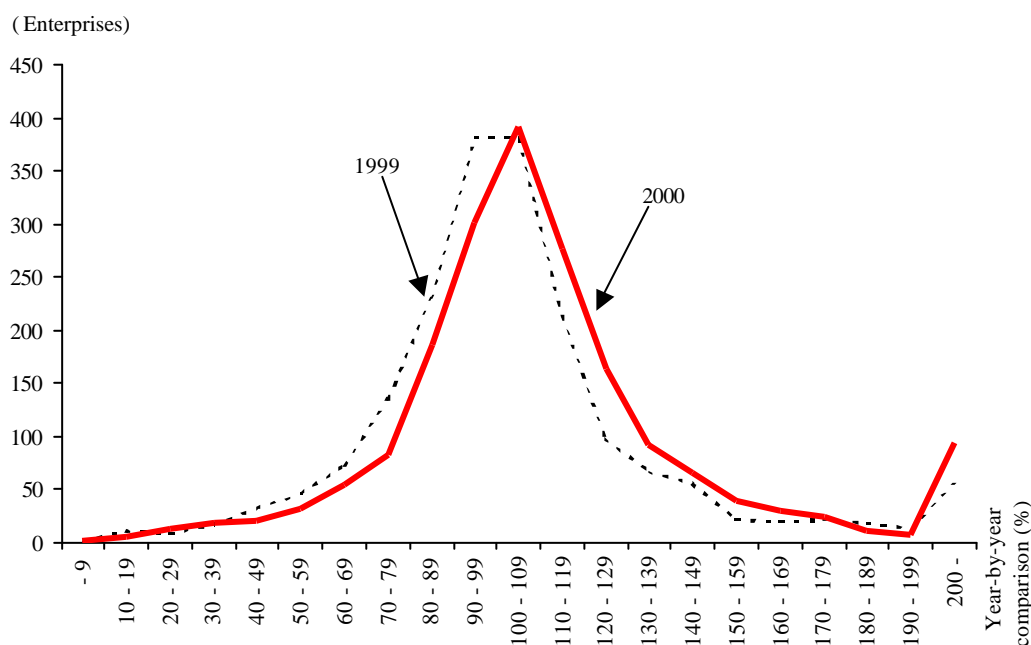
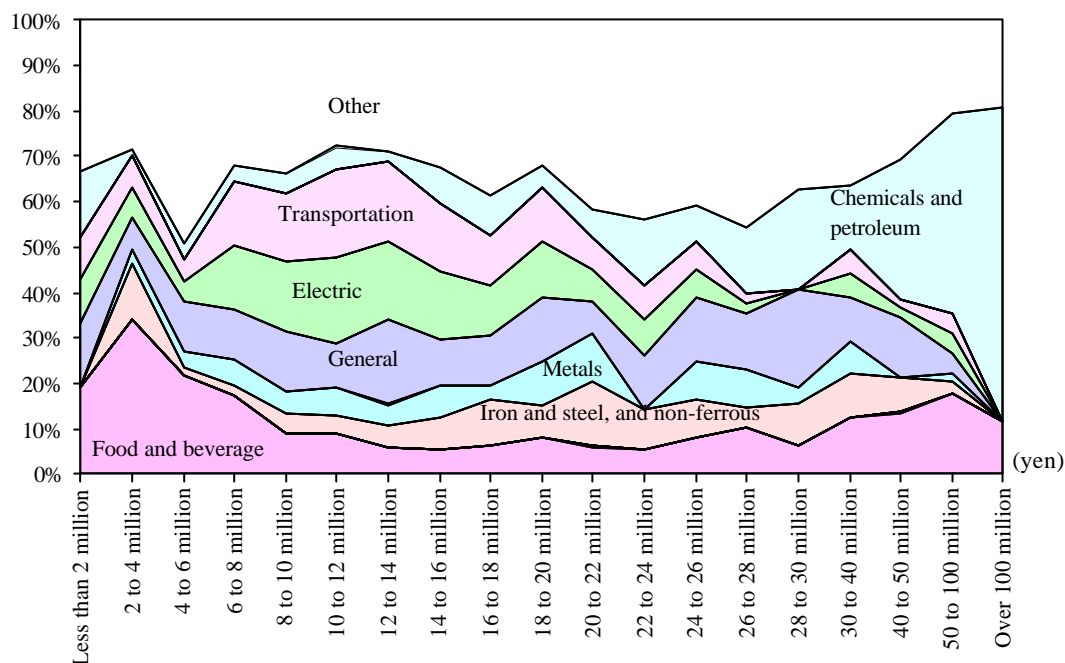


Figure V: Distribution of value added per employee compared to the previous year



By composition ratio by industry, distribution of “value added per employee” by value group of less than 8 million yen was high in the food and beverage industries, while that of 8 to 20 million yen was high in the transportation, electrical and general machinery industries. In addition, the composition ratio of the chemical and petroleum industries increased as value added per employee increased (Figure VI).

Figure VI: Composition ratio of value added per employee by industry and value group



3. Medium enterprises

“Value added per employee” was distributed similarly to 1998, 1999 and 2000, reaching a peak of 5 to 6 million yen. When viewing the distribution compared to the previous year, it shifted rightward, showing an improving trend similar with that of large enterprises (Figures VII and VIII).

Figures VII: Distribution of value added per employee (1998 to 2000)

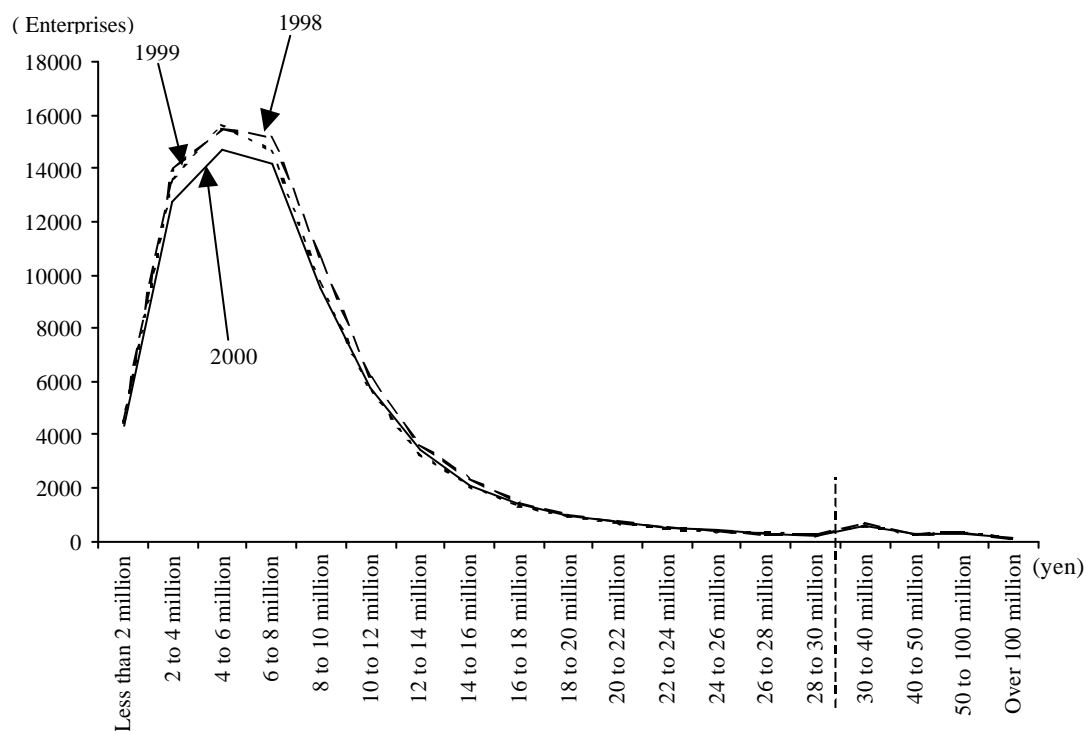
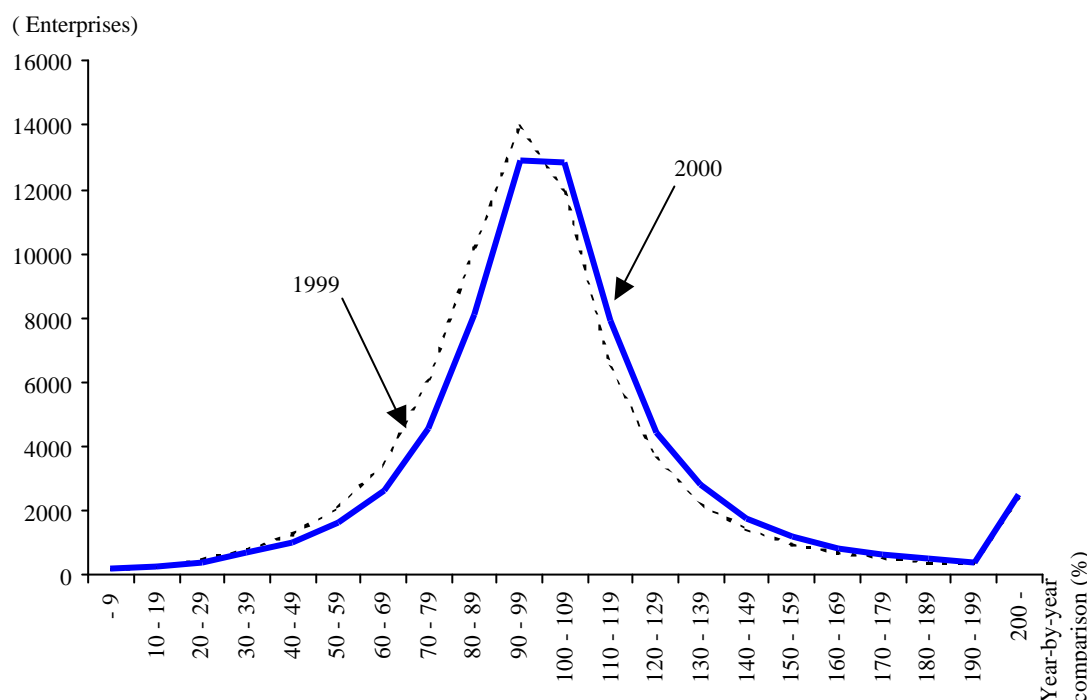
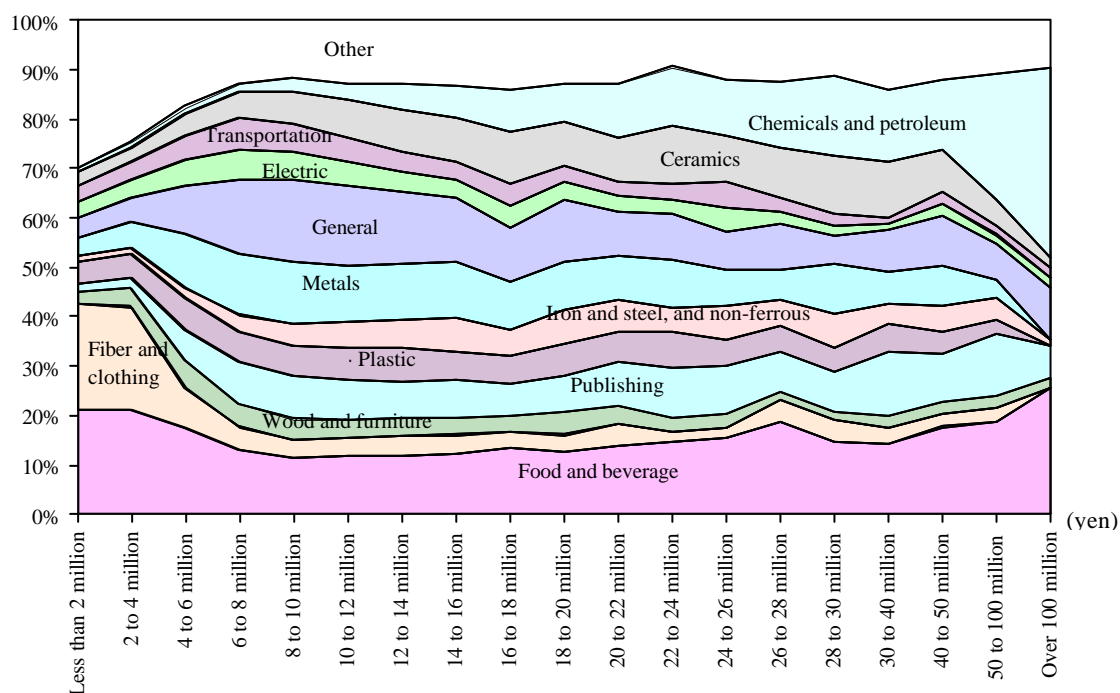


Figure VIII: Distribution of value added per employee compared to the previous year



By composition ratio by industry, distribution of “ value added per employee ” by value group of less than 8 million yen was high in the food and beverage industries and the fiber and clothing industries, while in the over 8 million yen category machinery industries such as transportation equipment, electric and general machinery and the publishing, metals and plastic industries remained almost the same ratio. In addition, similarly to large enterprises, the ratio of chemicals and petroleum industries expanded as the added-value group increased (Figure IX).

Figure IX: Composition ratio of value added per employee by industry and value group



4. Small enterprises

“ Value added per employee ” was distributed similarly to 1998, 1999 and 2000. Compared to the previous year, distribution shifted rightward. Therefore, an improving trend can also be seen in small enterprises (Figures X and XI).

Figures X: Distribution of value added per employee (1998 to 2000)

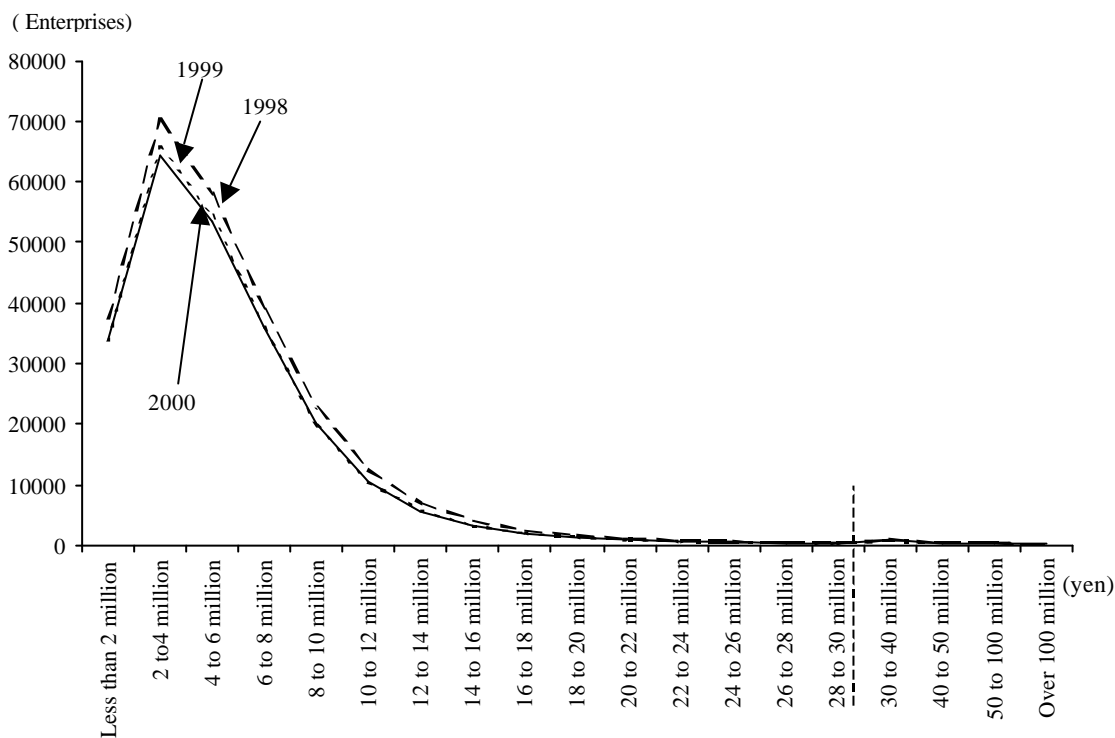
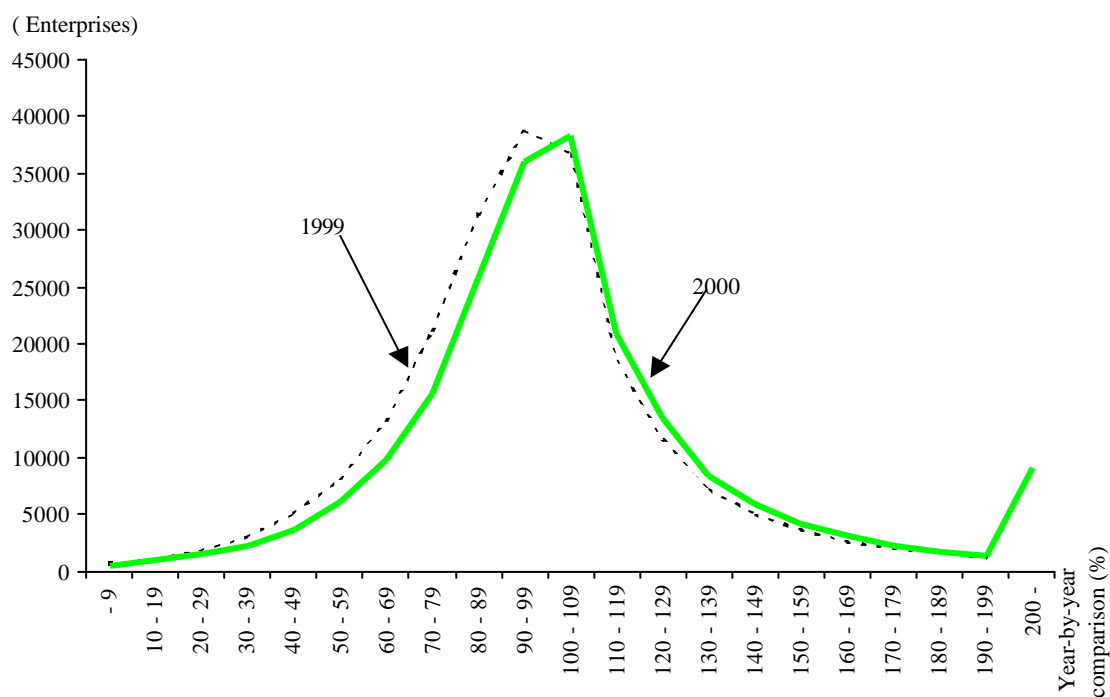


Figure XI: Distribution of value added per employee compared to the previous year



By composition ratio by industry, distribution of “ value added per employee ” by value group of less than 4 million yen was high in the food and beverage industries and the fiber and clothing industries, while that of over 4 million yen was high in the general machinery and metals industry. In addition, the ratio of ceramics expanded as added-value per employee increased, and the ratio of the food and beverage industries also showed a similar trend (Figure XII).

Figure XII: Distribution of value added per employee compared to the previous year

